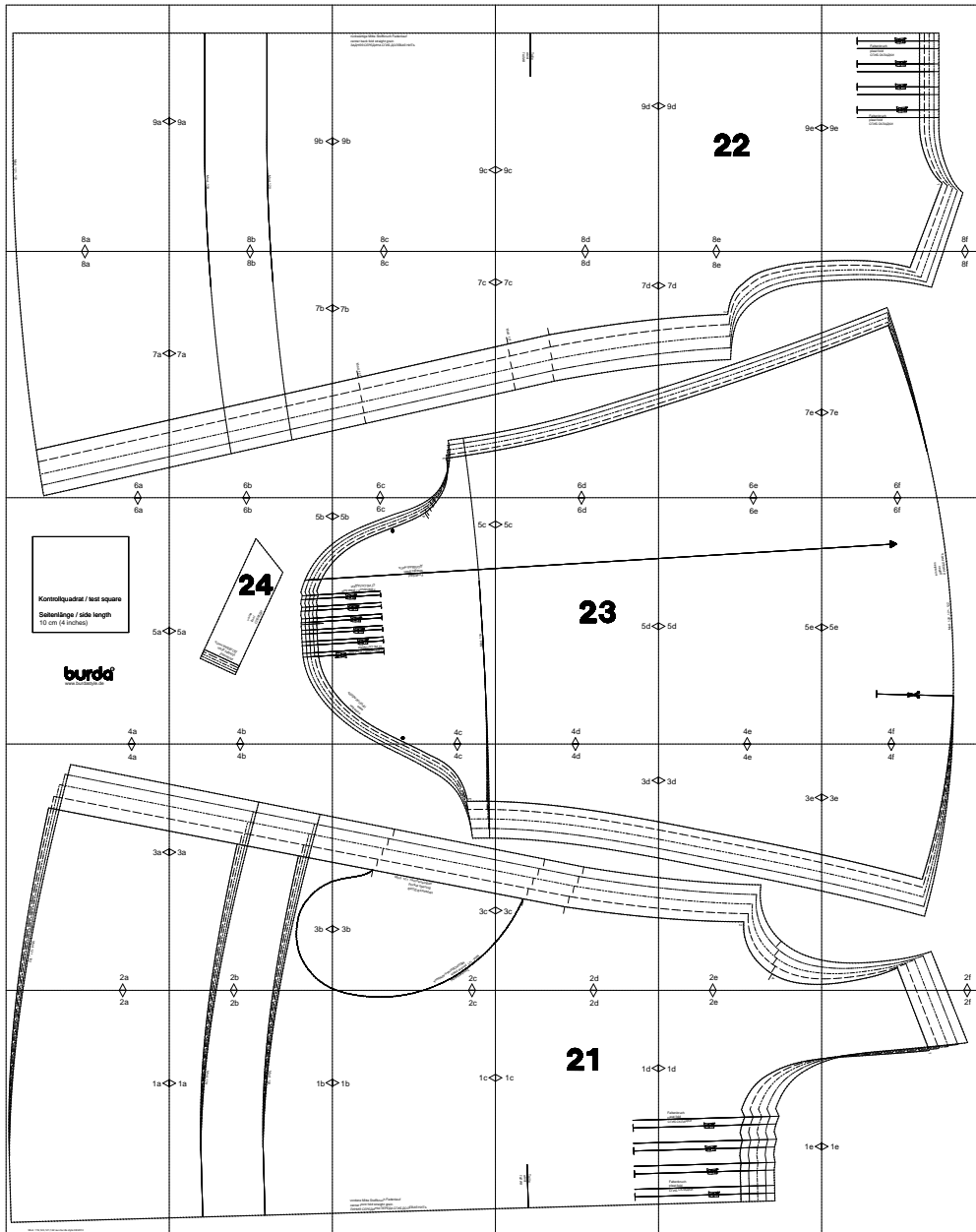


burda Download-Schnitt

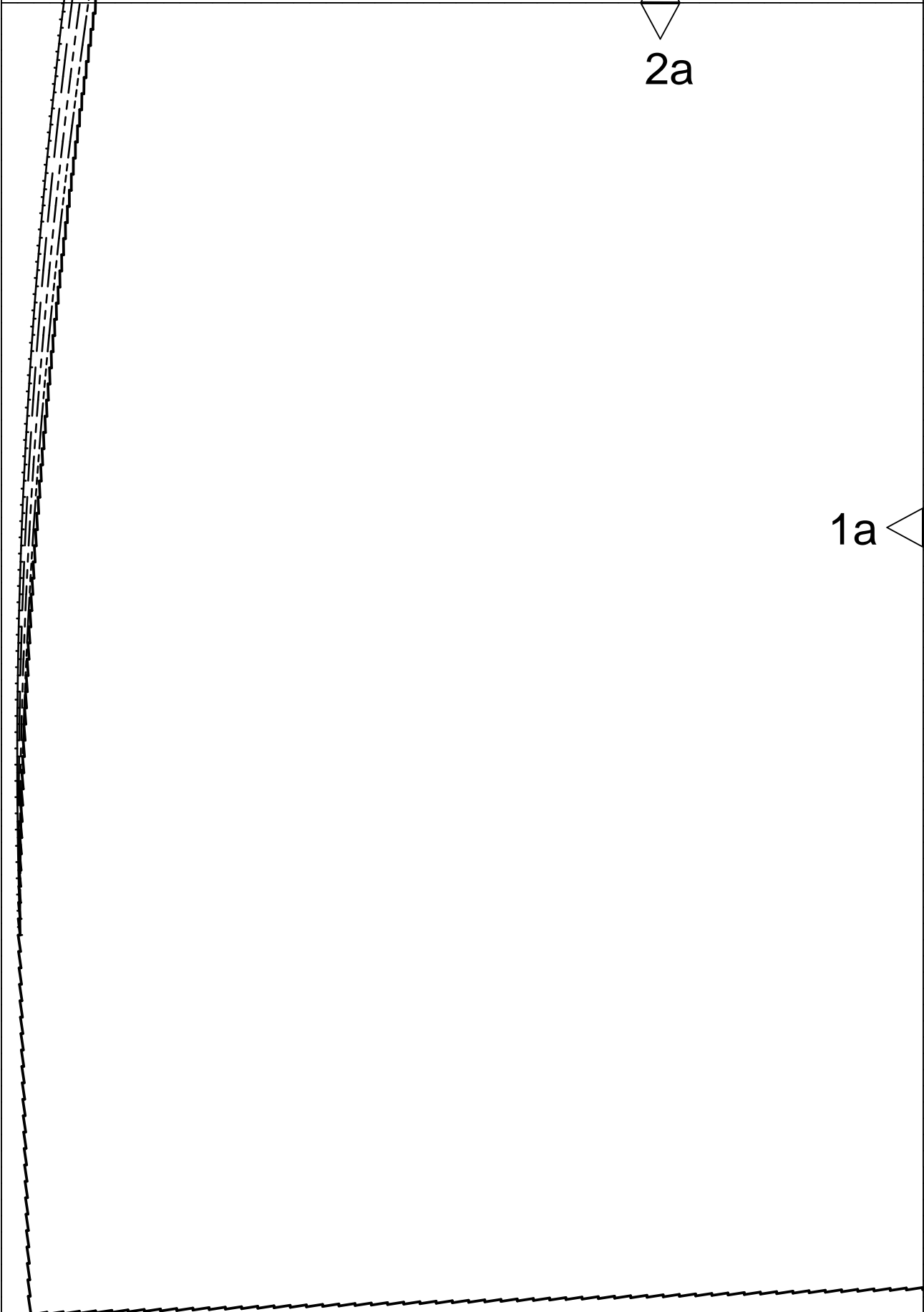
Modell 120 Burda Style 08/2010



Copyright 2010 by Verlag Aenne Burda GmbH & Co. KG, Am Kestendamm 1, D-77652 Offenburg

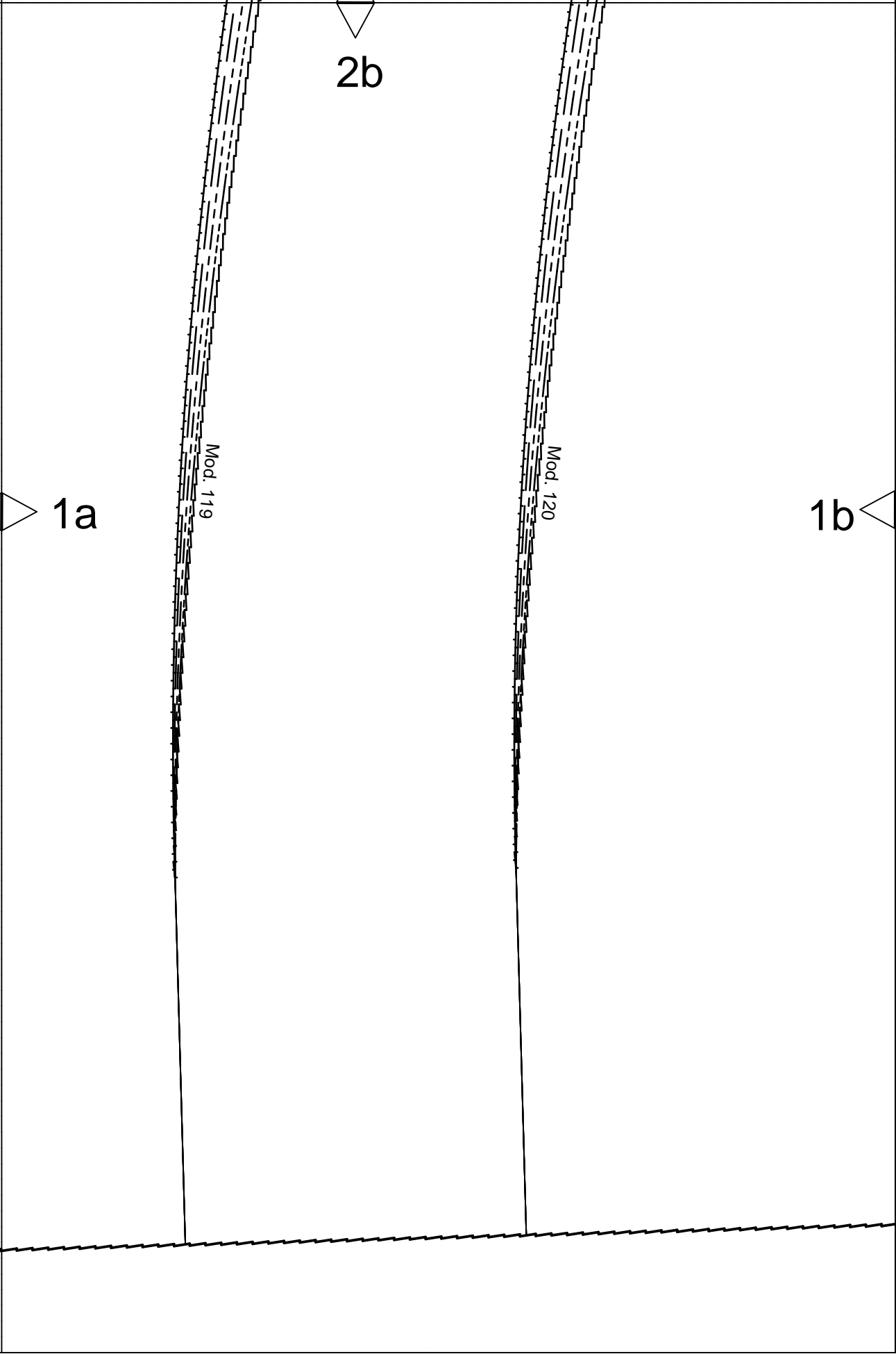
Sämtliche Modelle, Schnittteile und Zeichnungen stehen unter Urnehmerschutz, gewerbliches Nacharbeiten ist untersagt.

Der Verlag haftet nicht für Schäden, die durch unsachgemäße Handhabung des Schnitts, der Materialien, unsachgemäße Ausführung der Tipps und Anleitungen oder unsachgemäße Nutzung der Modelle entstehen.



2a

1a





2c

1b

1c

vordere Mitte Stoffbruch Fadenlauf
center front fold straight grain
ЛИНИЯ СЕРЕДИНЫ ПЕРЕДА СГИБ ДОЛЕВАЯ НИТЬ

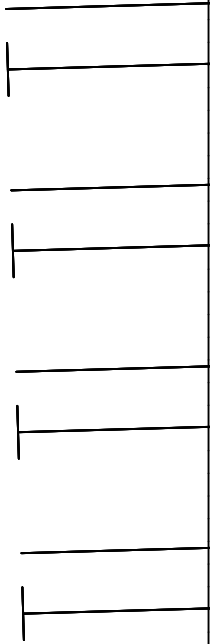
2d

21

1d

1c

Taille
waist
ТАЛИЯ



2e

1d

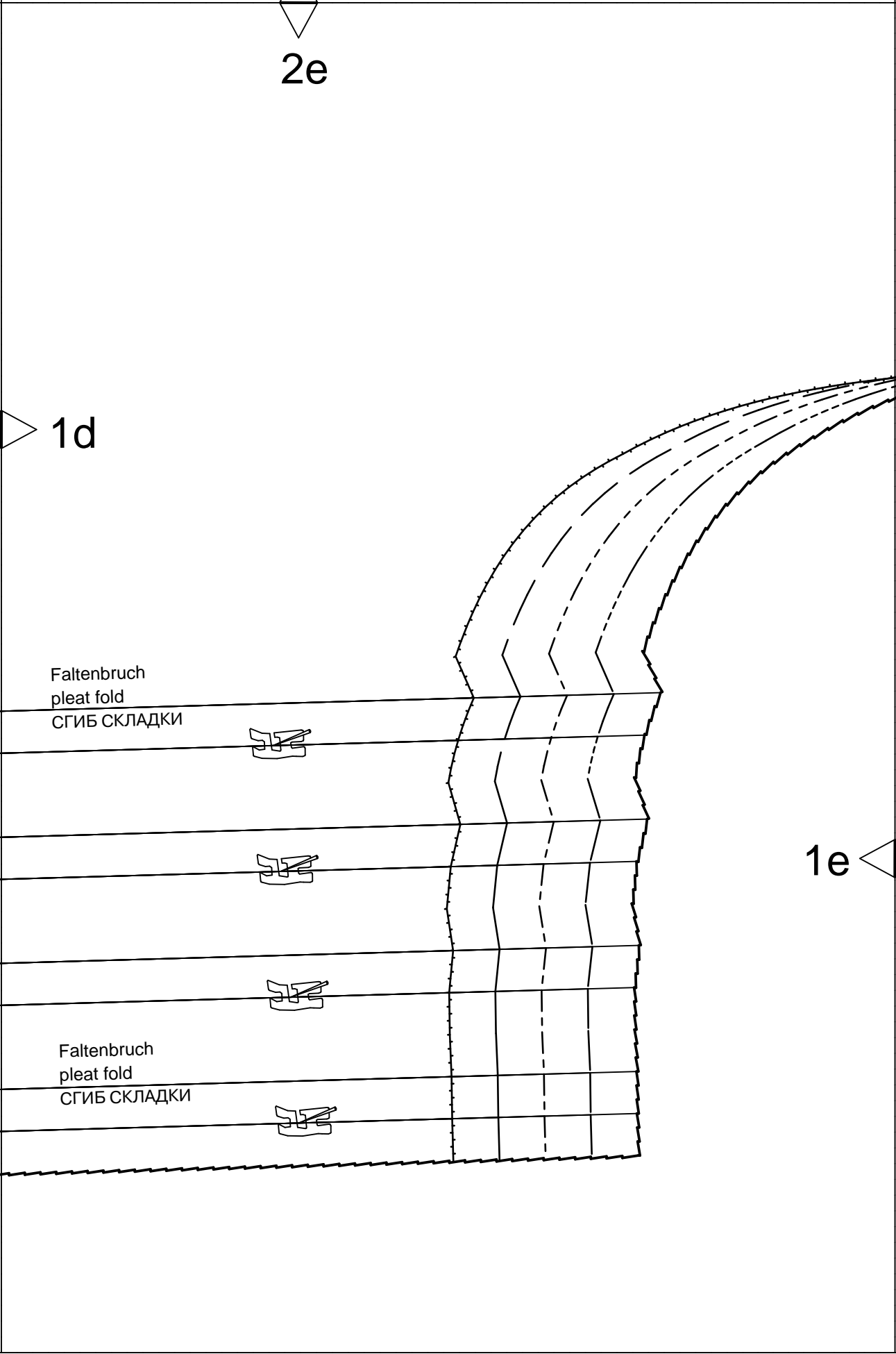
Faltenbruch
pleat fold
СГИБ СКЛАДКИ

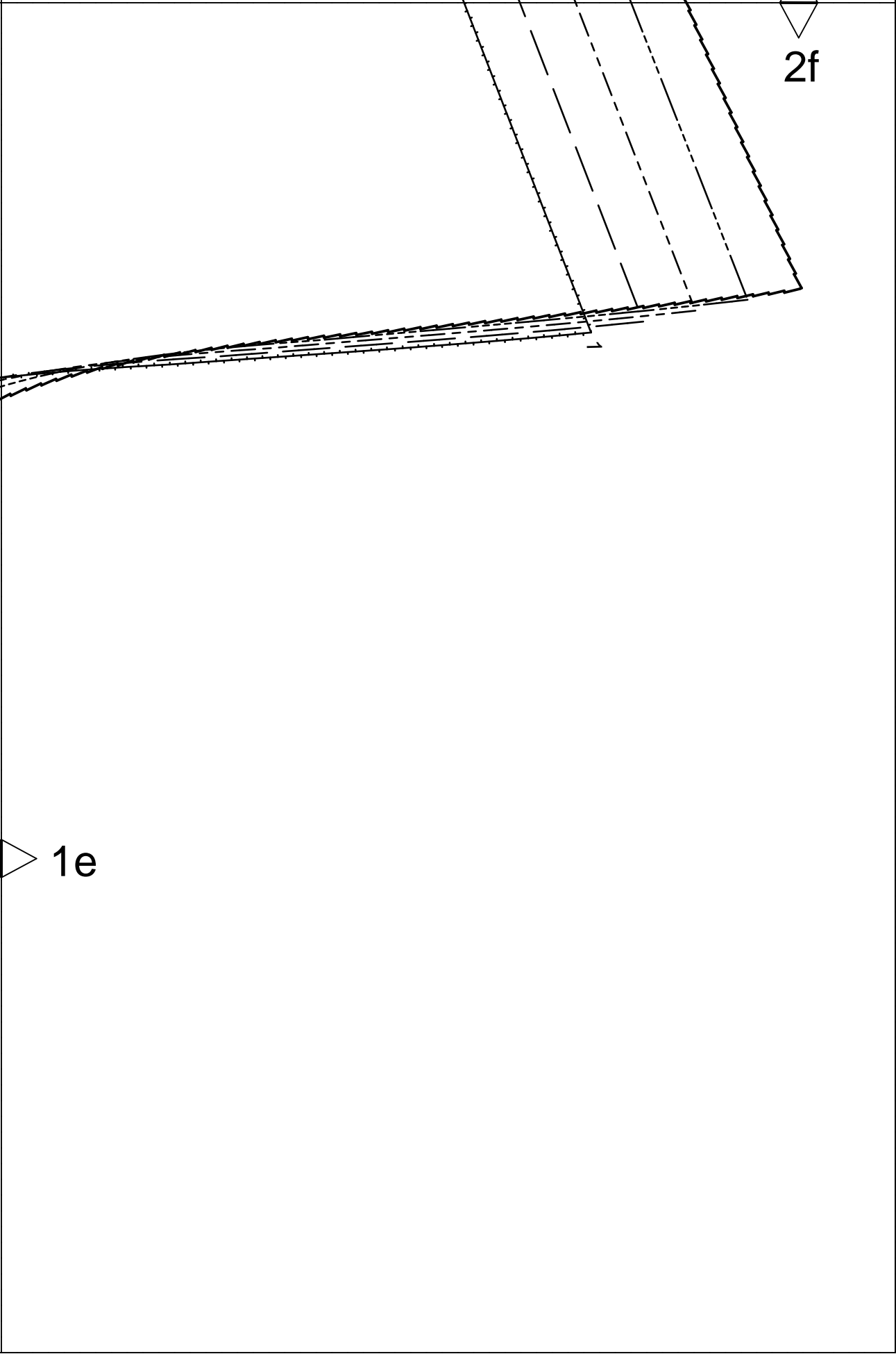


Faltenbruch
pleat fold
СГИБ СКЛАДКИ



1e





1e

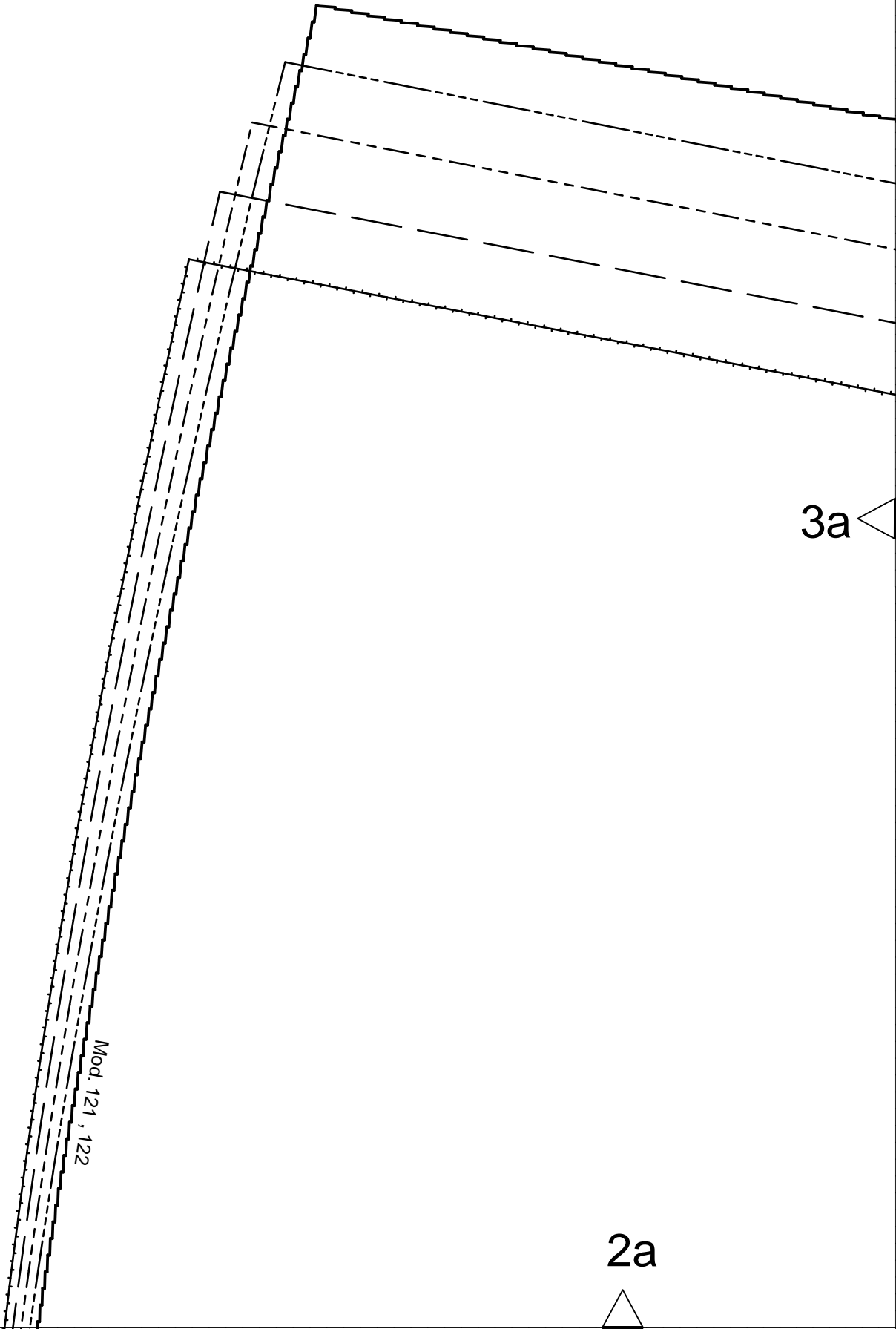
2f

4a

3a

2a

Mod. 121, 122

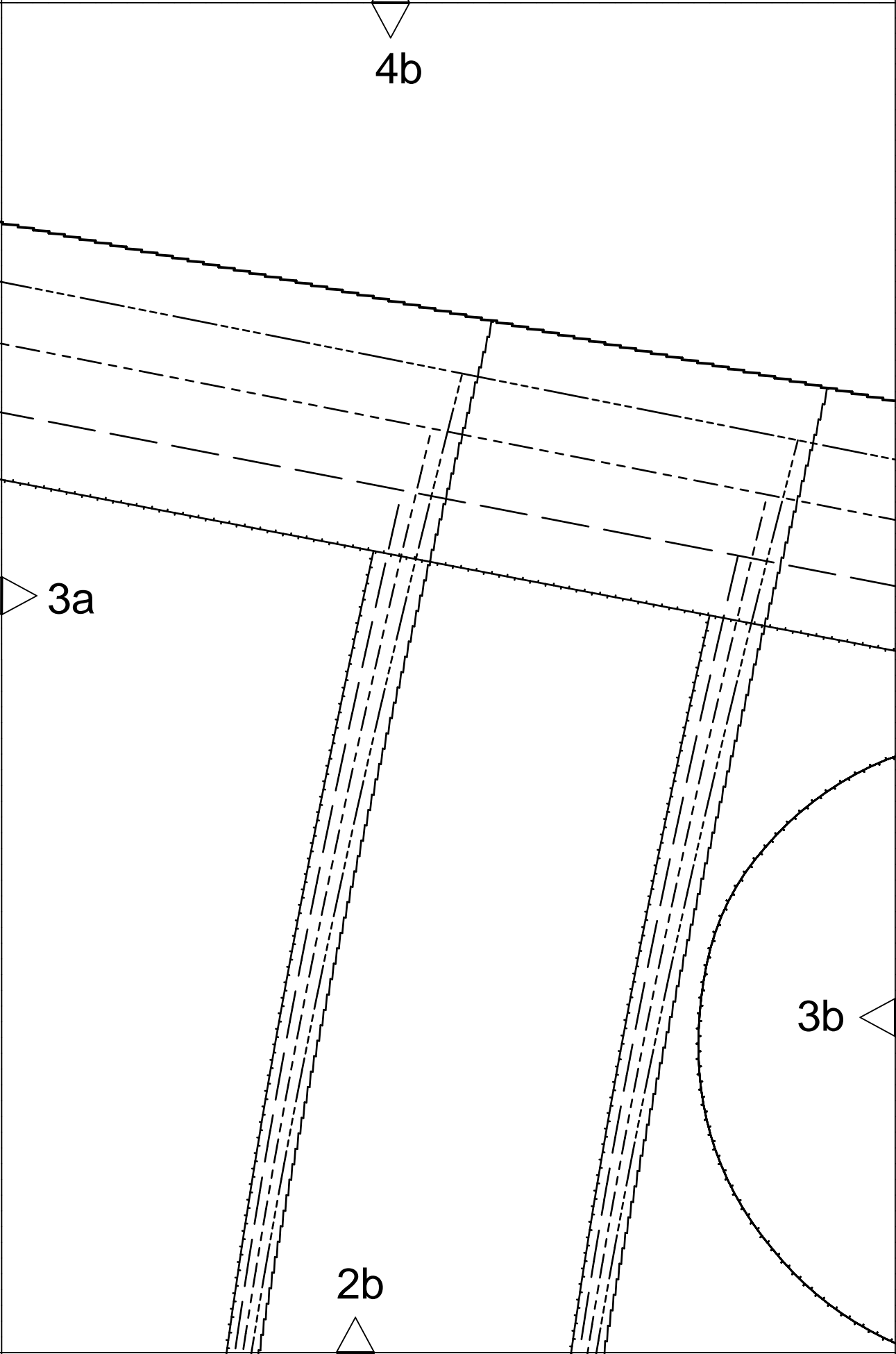


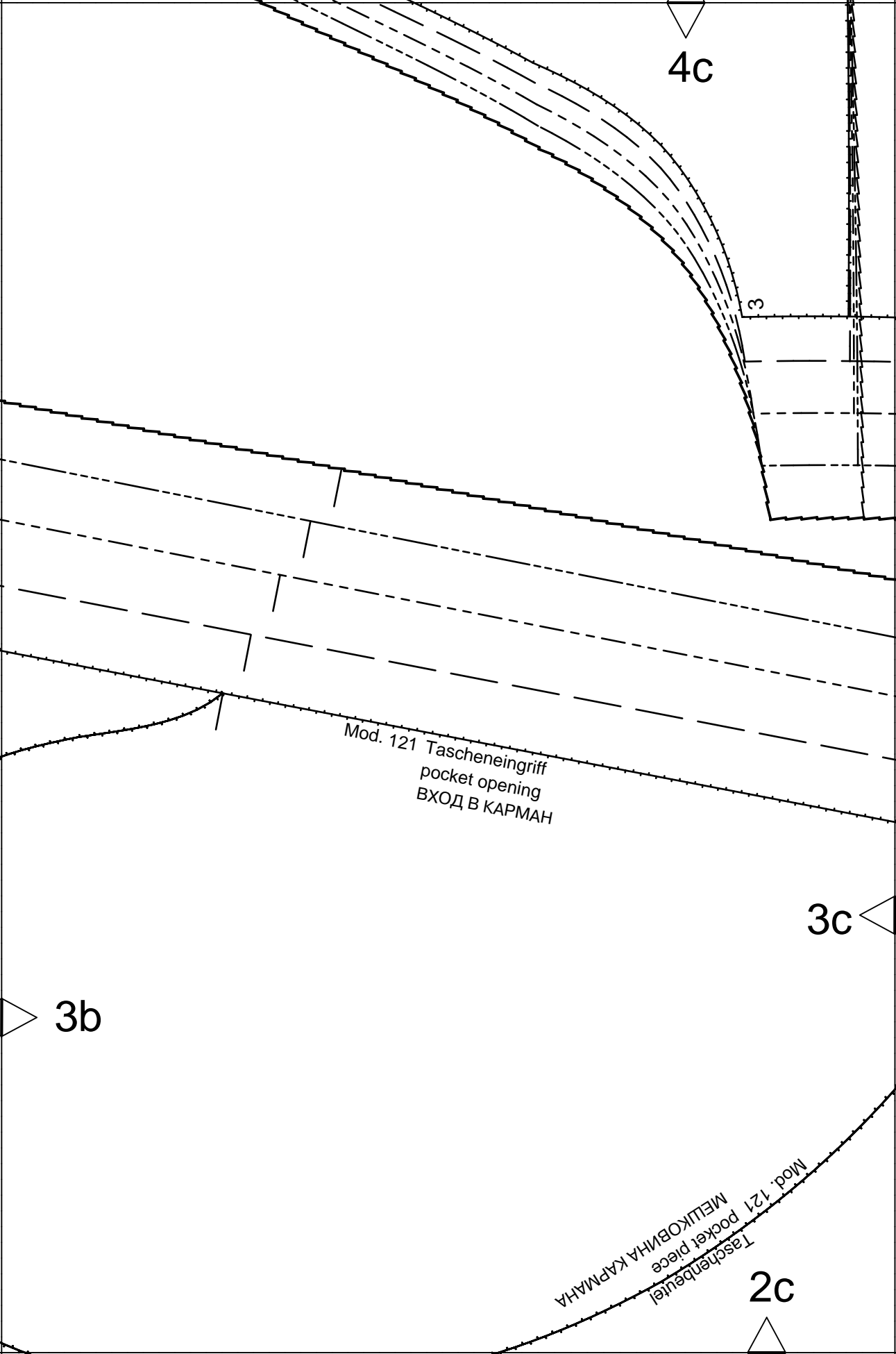
4b

3a

3b

2b





4c

3

Mod. 121 Tascheneingriff
pocket opening
ВХОД В КАРМАН

3c

3b

Mod. 121 pocket piece
МЕШКОВИНА КАРМАНА
Taschenbeutel

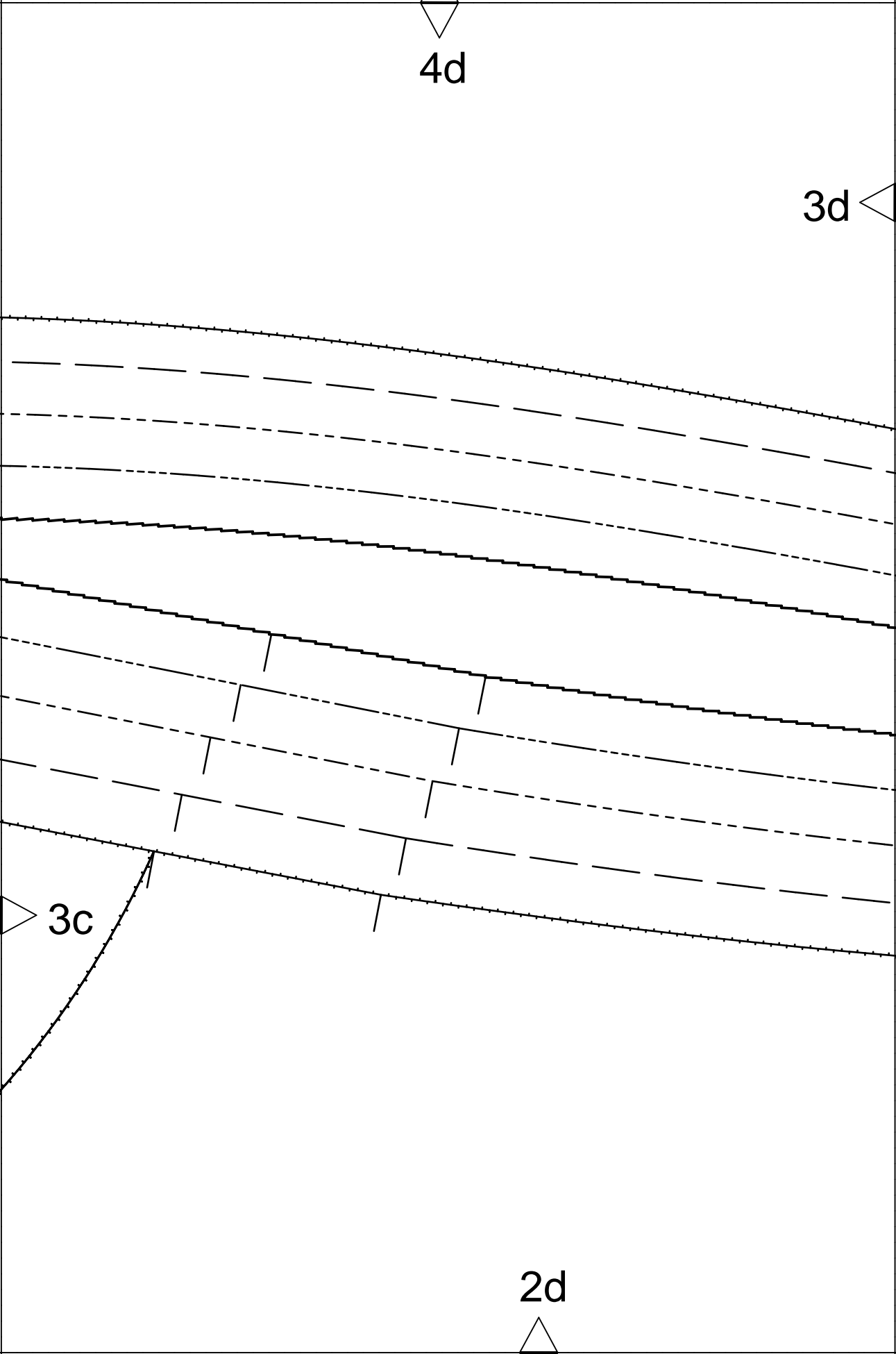
2c

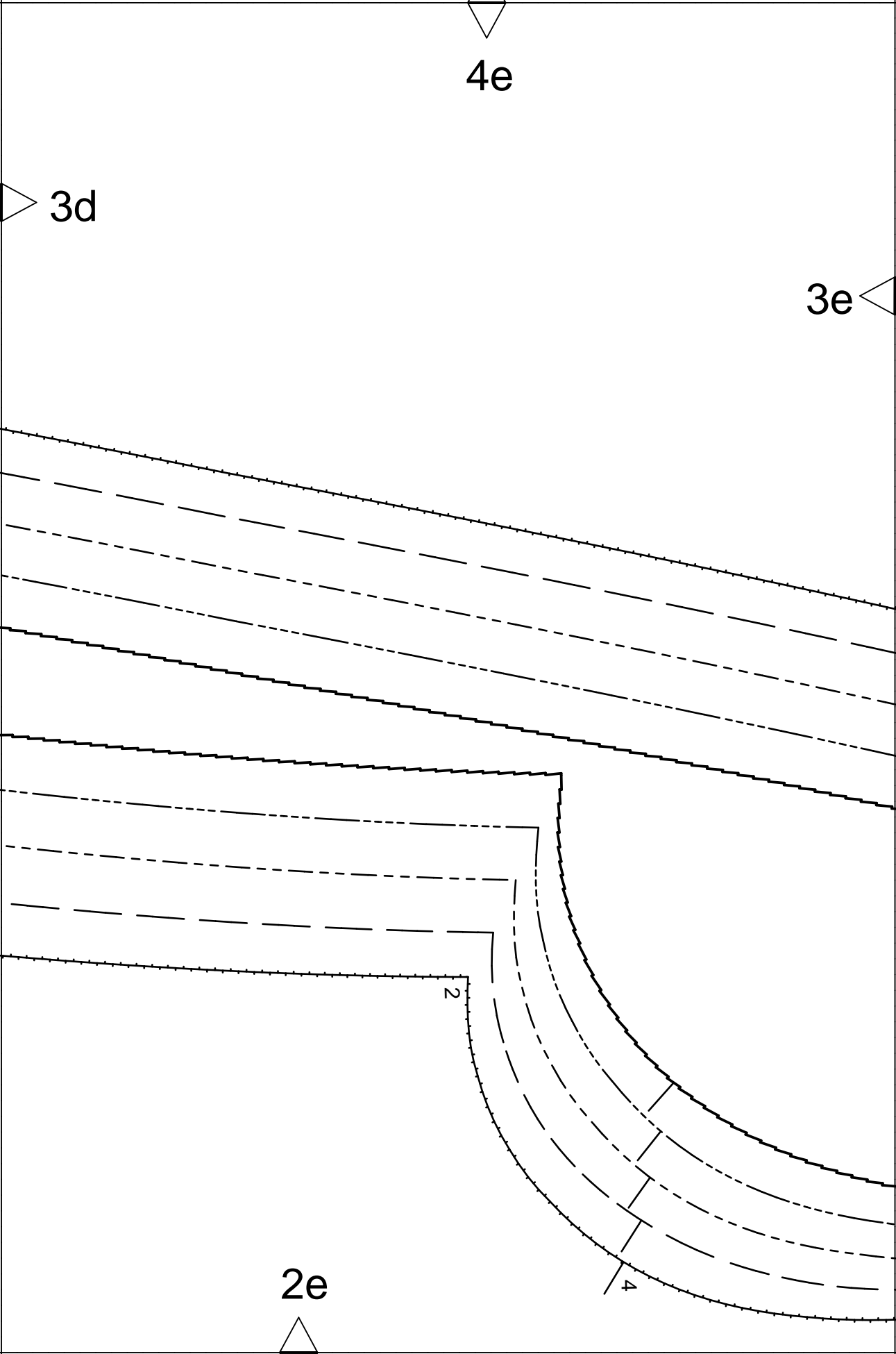
4d

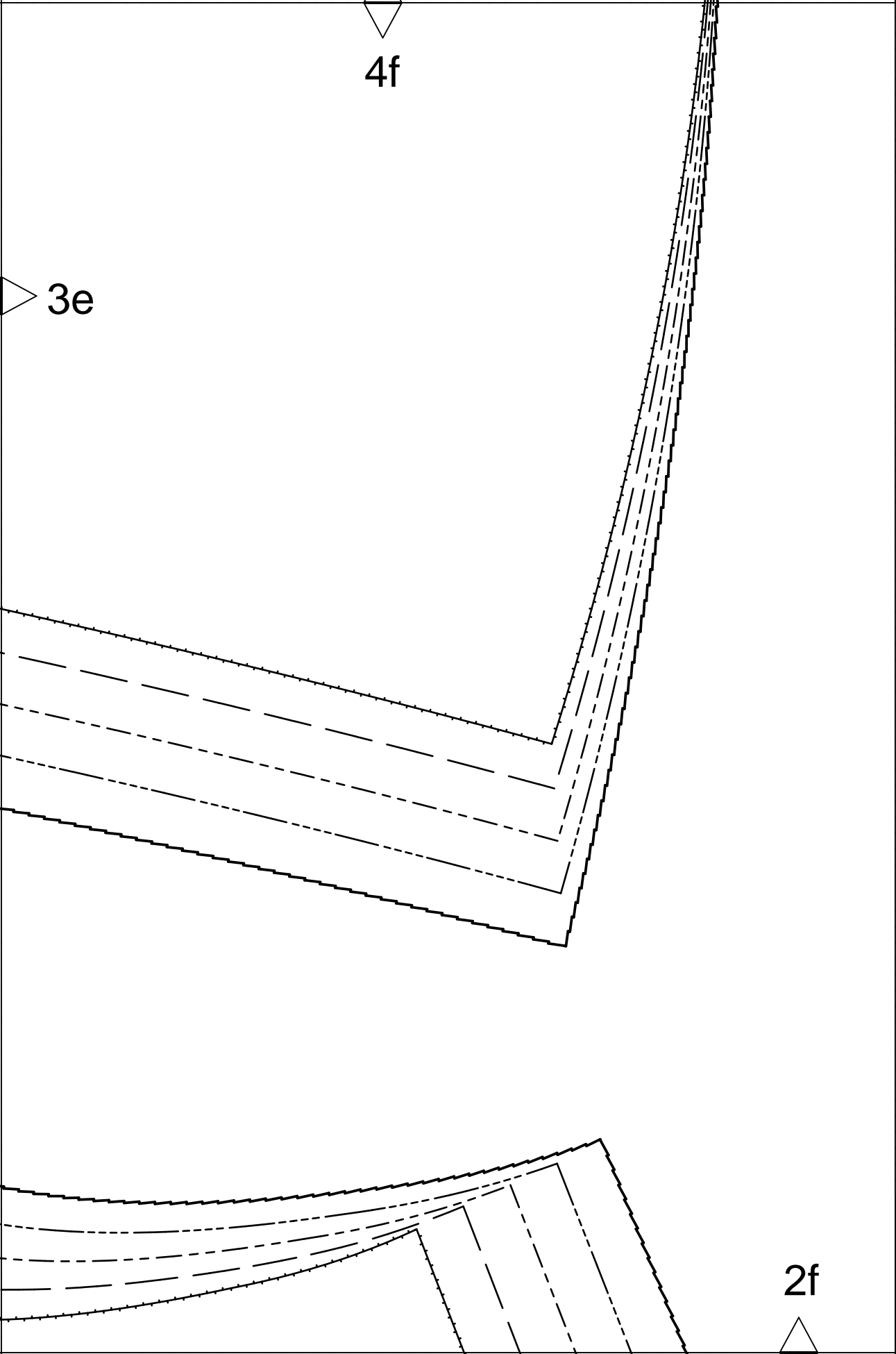
3d

3c

2d







6a

Kontrollquadrat / test square

Seitenlänge / side length
10 cm (4 inches)

5a

burda[®]

www.burdastyle.de

4a

6b

5b

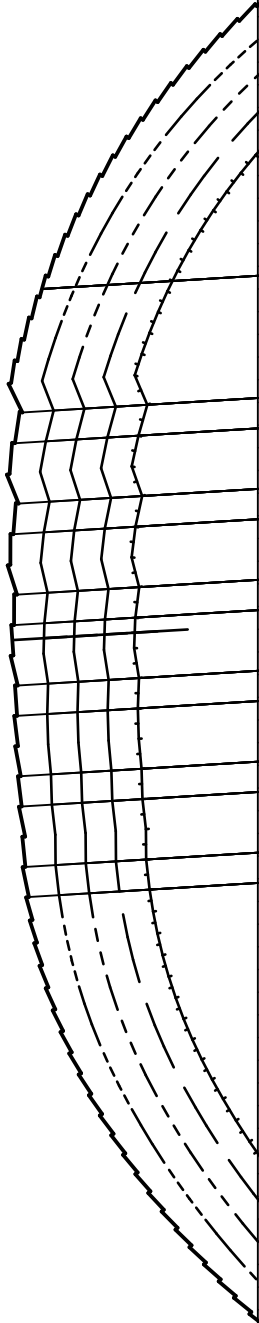
24

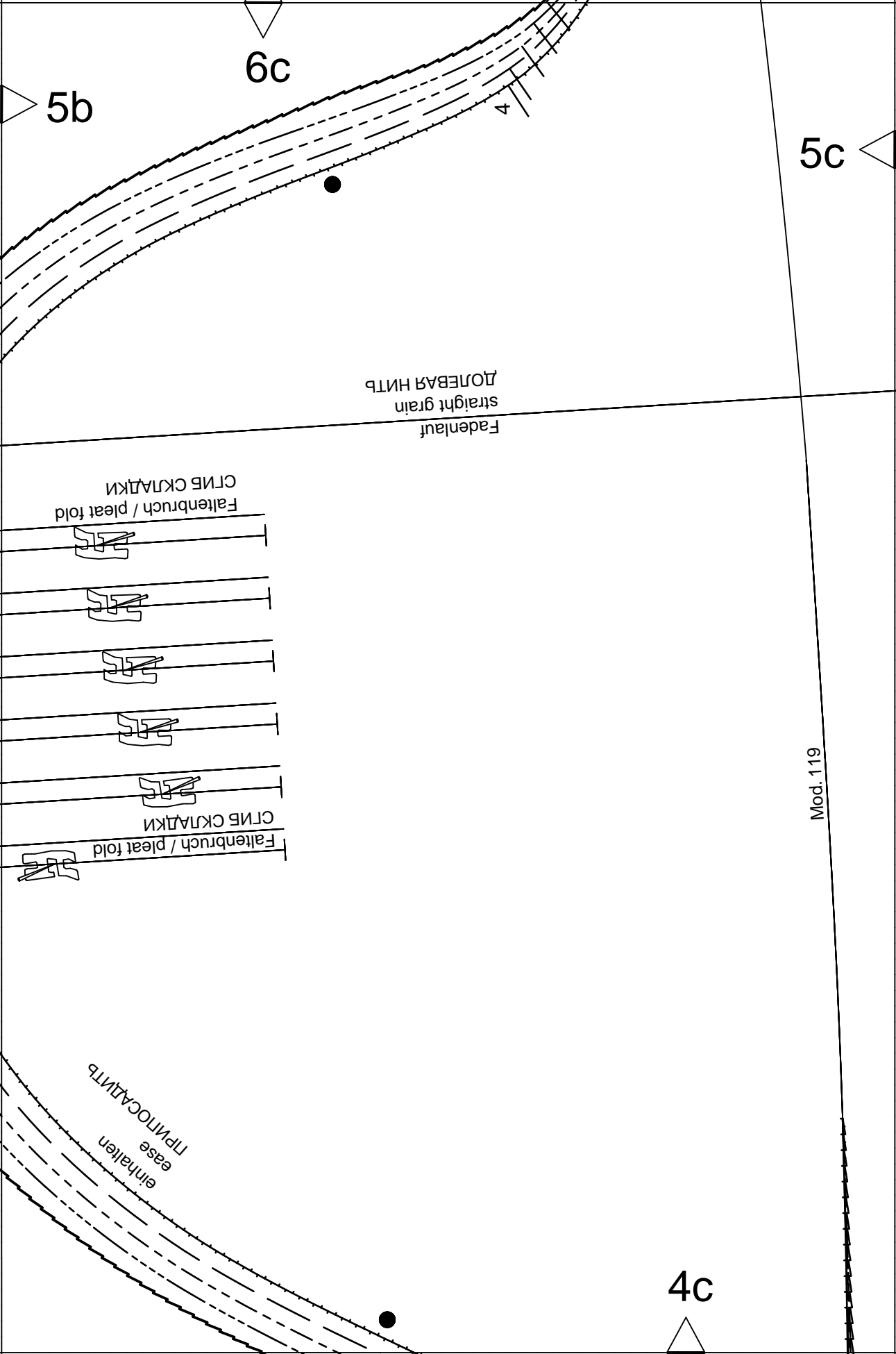
vorne
front
СПЕРЕДИ

Fadenlauf
straight grain
ДОЛБАВА НИТЬ

5a

4b





6d

5c

23

5d

4d

A diagram consisting of a large rectangle with a horizontal line near the top. The line slopes slightly upwards from left to right. Four labels are placed around the diagram: '6e' at the top center, '4e' at the bottom center, '5d' on the left side, and '5e' on the right side. Each label is accompanied by a small triangle pointing towards the center of the diagram.

6e

4e

5d

5e

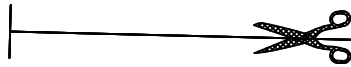
6f



einreihen
gather
ПРИСБОРИТЬ

Mod. 120, 121, 122

5e



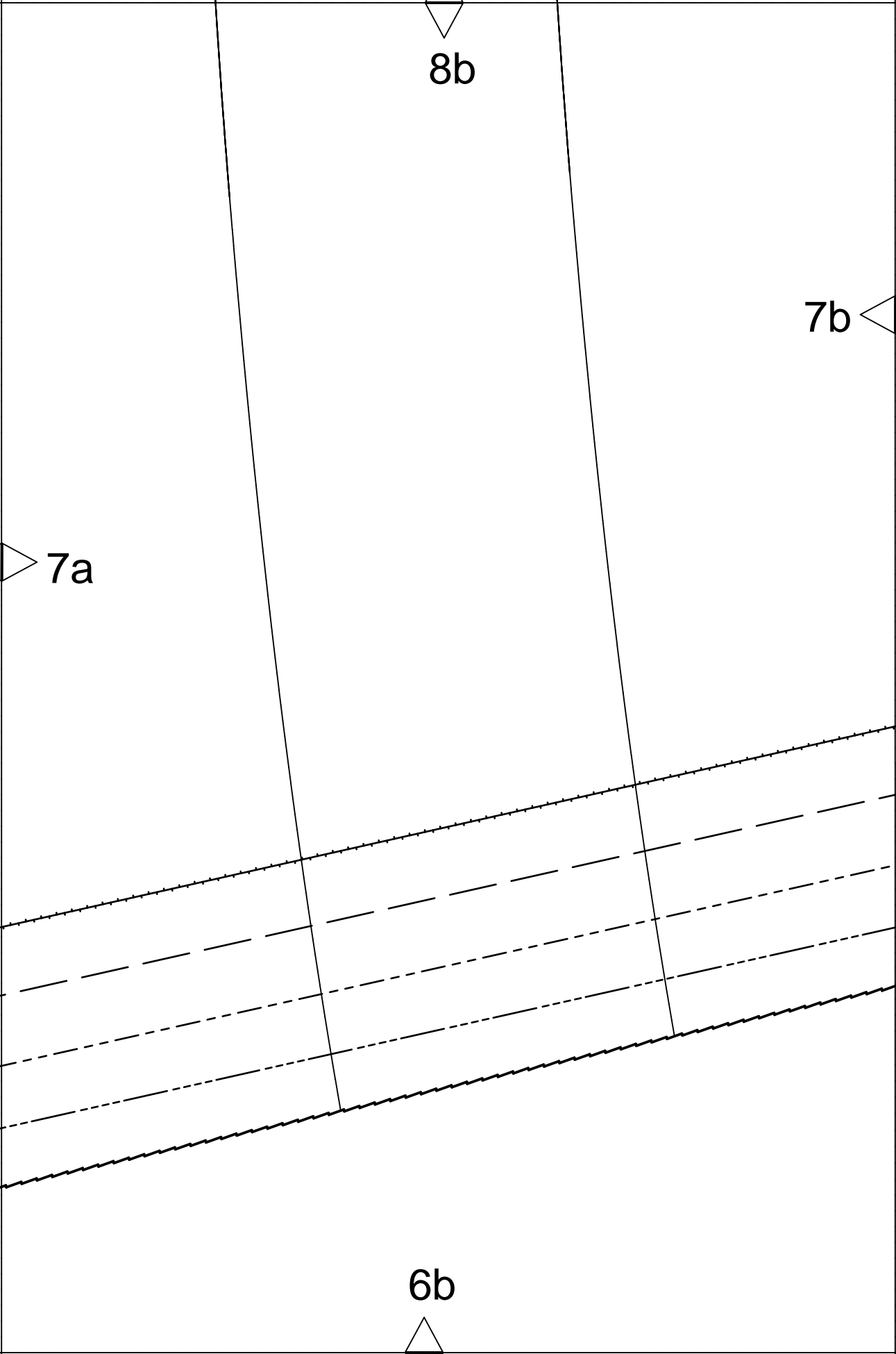
4f



8a

7a

6a



8c

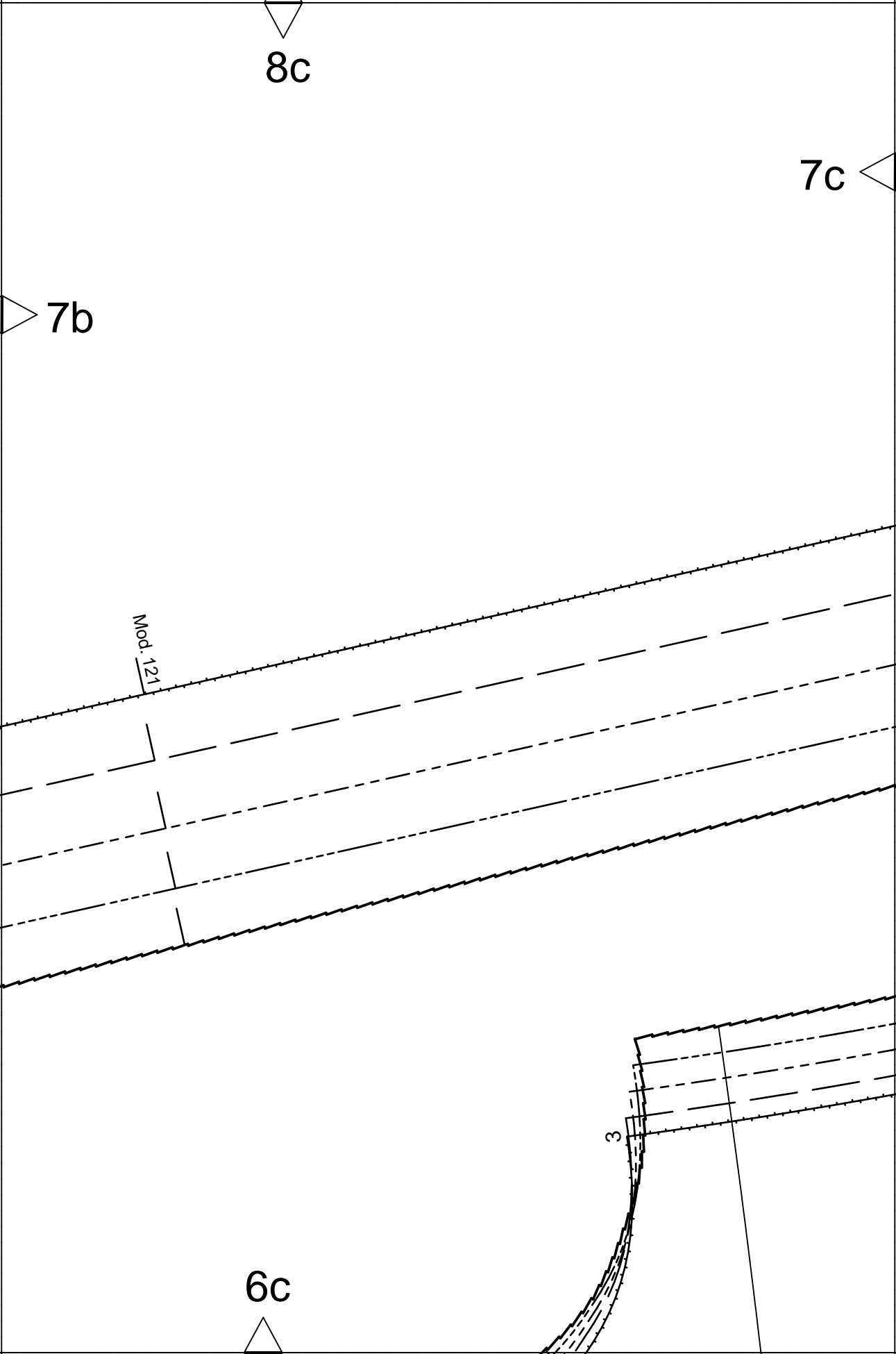
7c

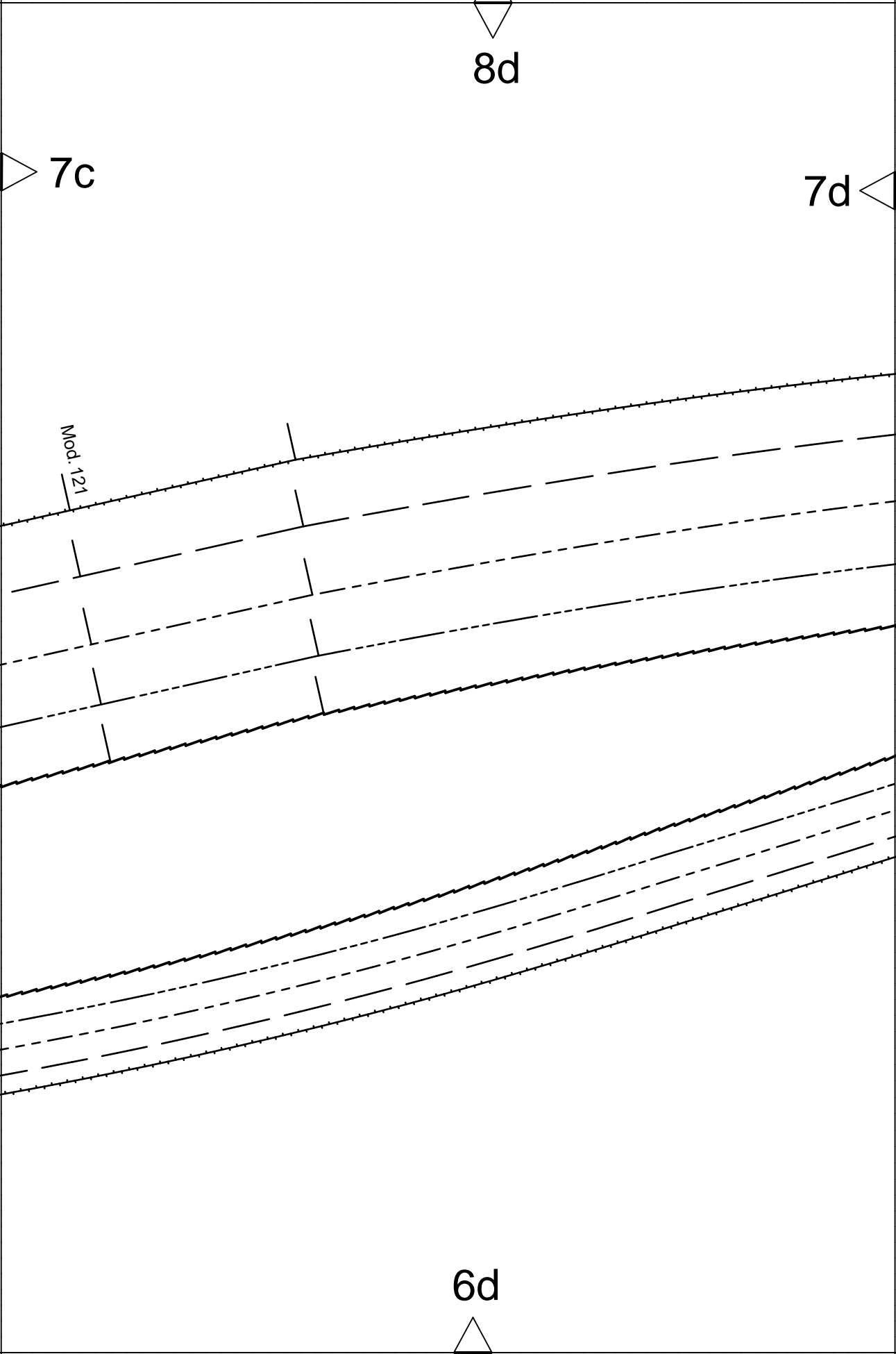
7b

Mod. 121

6c

3





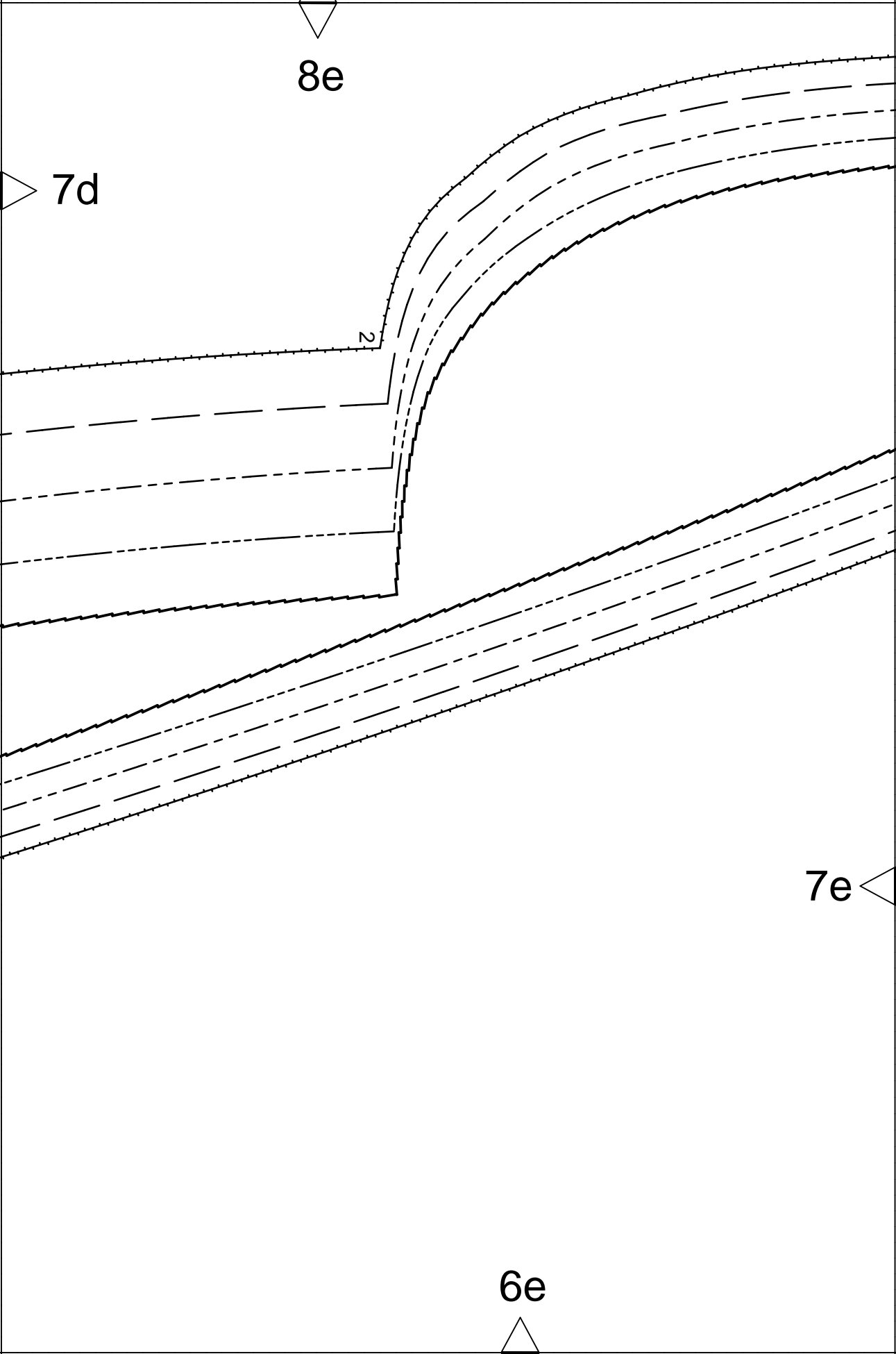
8d

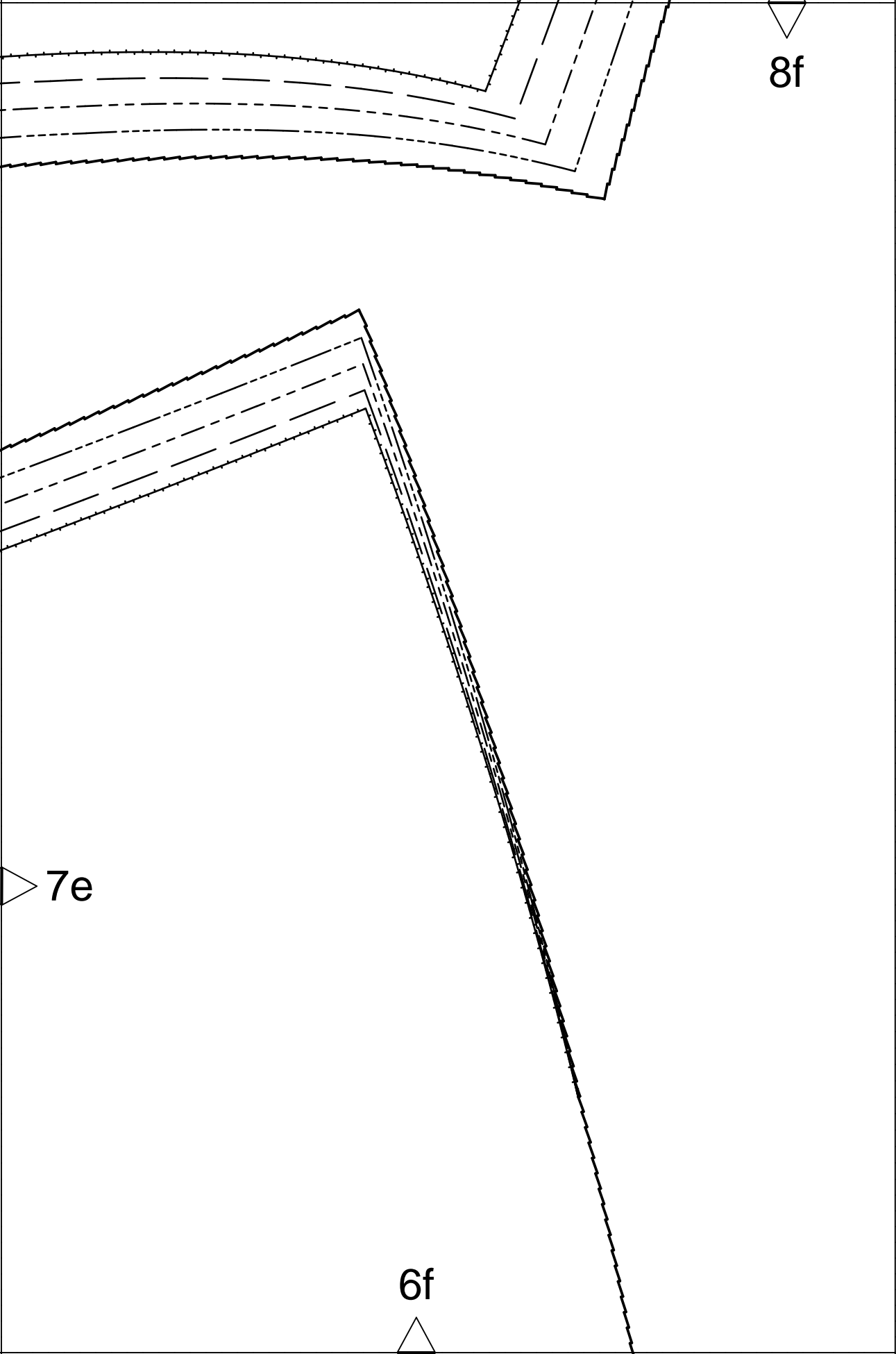
7c

7d

Mod. 121

6d





8f

7e

6f

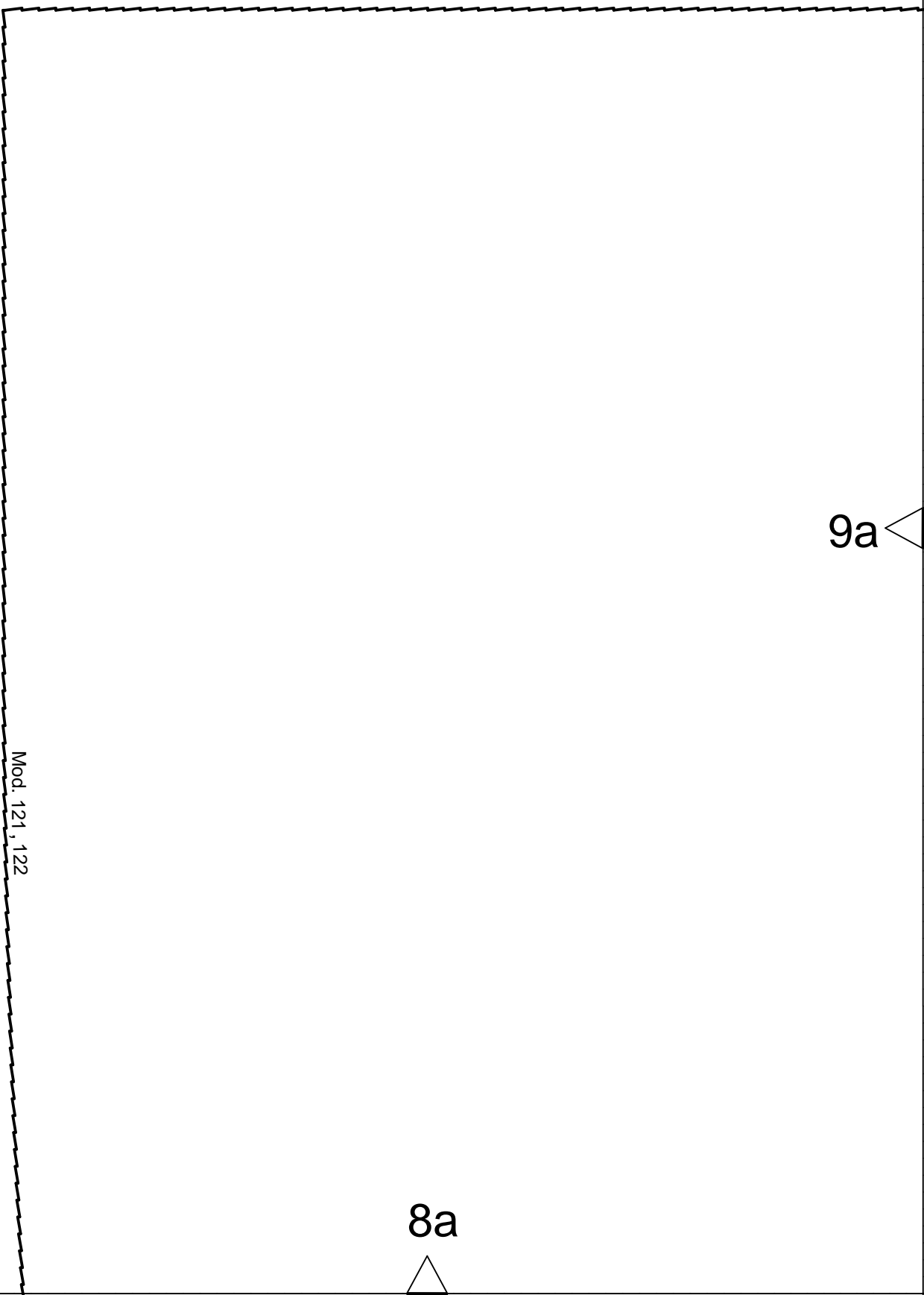
8a



9a



Mod: 121, 122



9a

9b

Mod. 119

Mod. 120

8b

rückwärtige Mitte Stoffbruch Fadenlauf
center back fold straight grain
ЗАДНЯЯ СЕРЕДИНА СГИБ ДОЛЕВАЯ НИТЬ

9b

9c

8c

Taille
waist
ТАЛИЯ

9d

9c

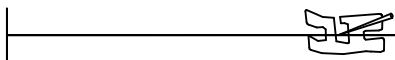
8d

9d

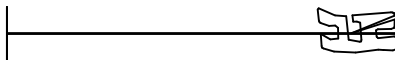
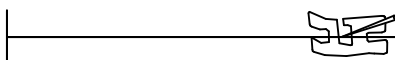
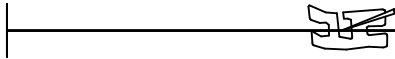
9e

22

8e



Faltenbruch
pleat fold
СГИБ СКЛАДКИ



Faltenbruch
pleat fold
СГИБ СКЛАДКИ

9e

8f

