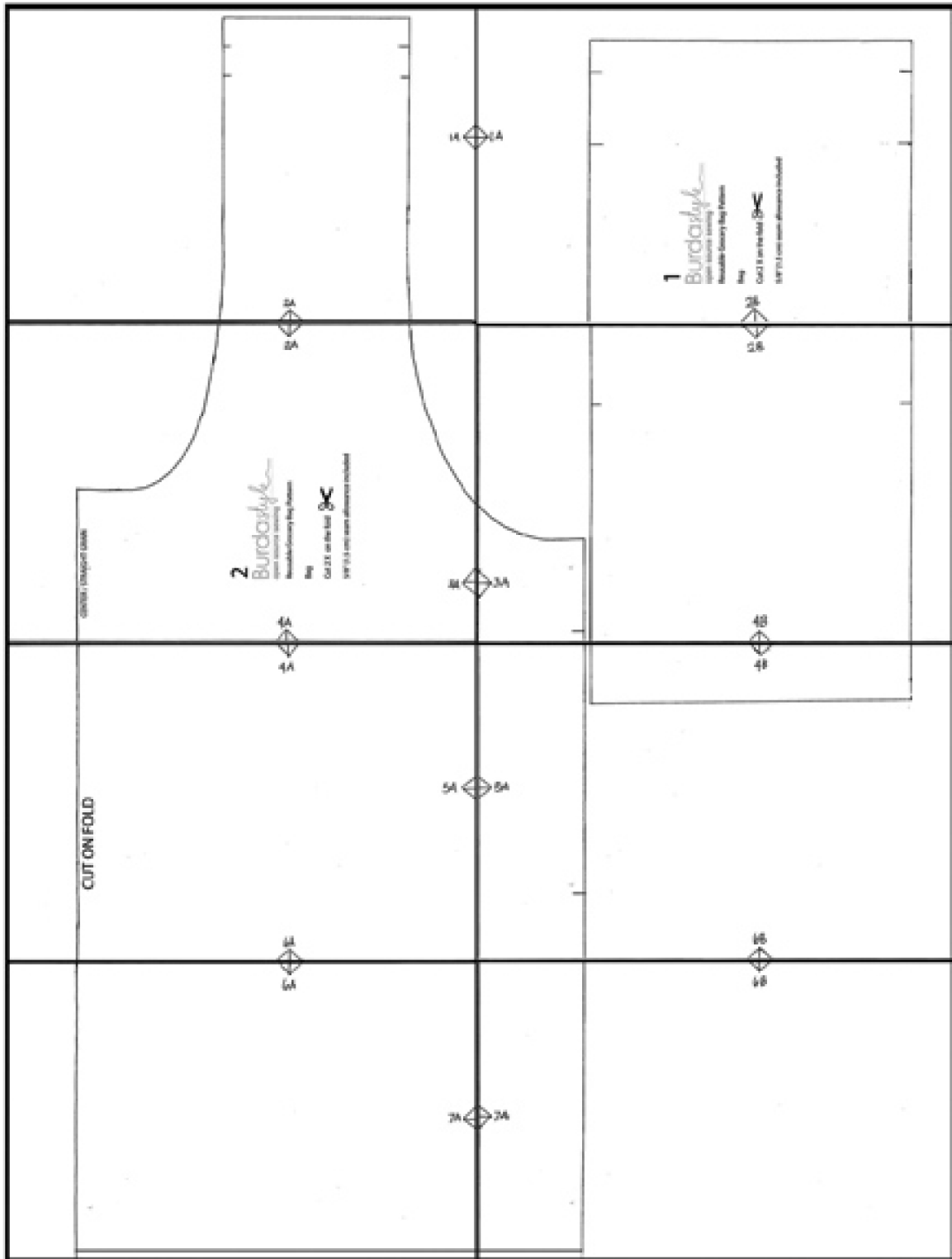


# Reusable Grocery Bag Pattern Layout Drawing



1A

1

Burdastyle

open source sewing

Reusable Grocery Bag Pattern

Pouch

Cut 1 X

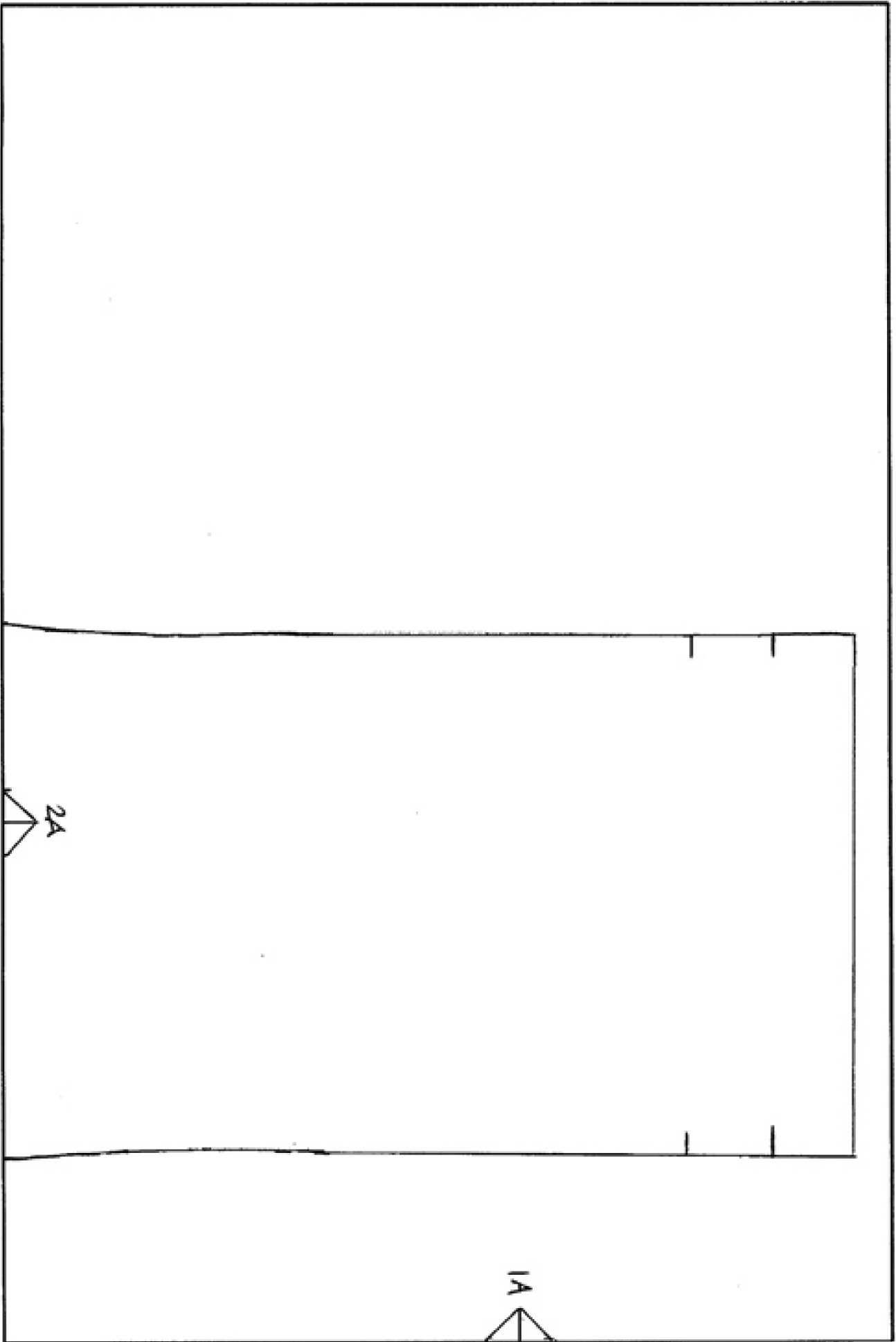


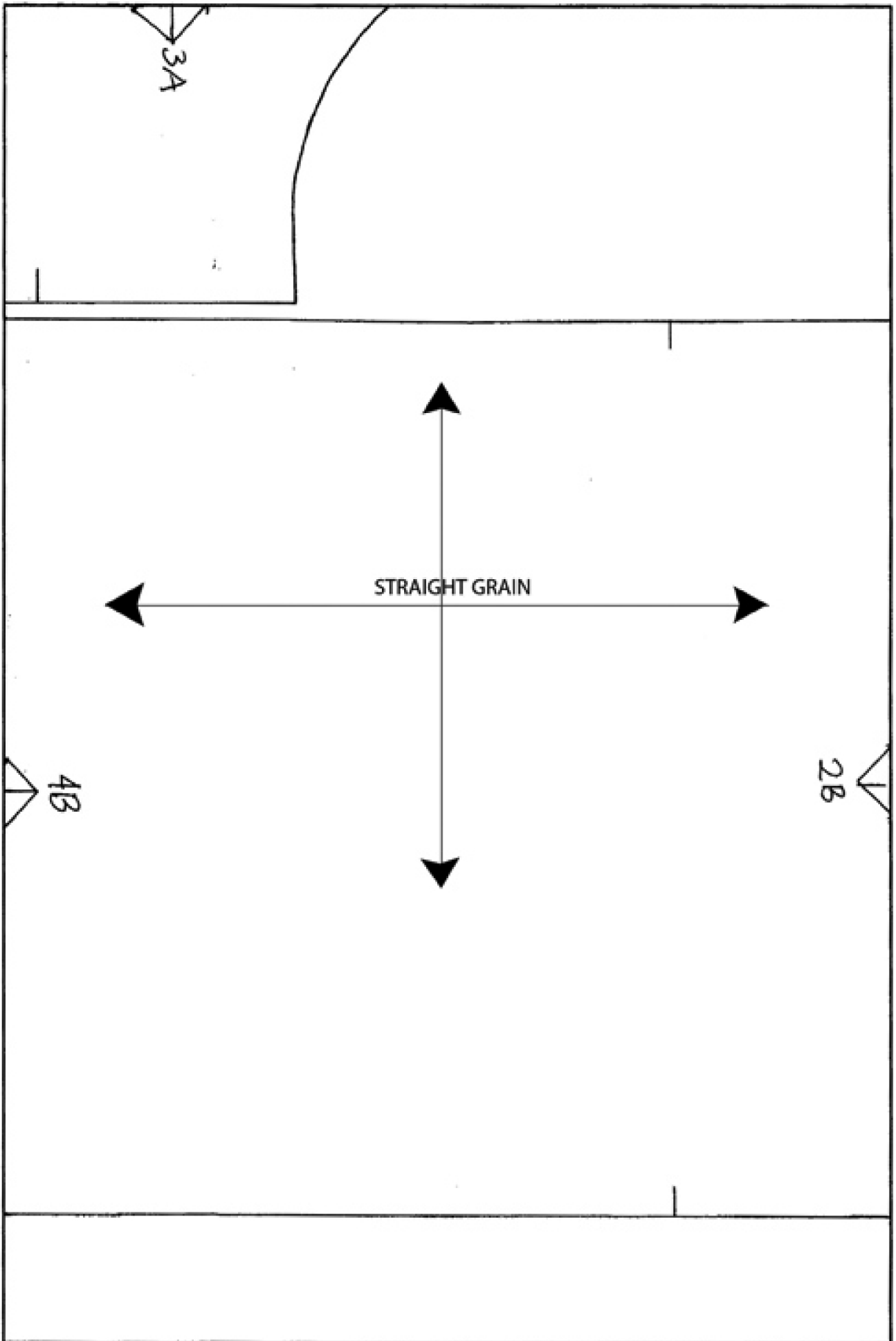
5/8" (1.5 cm) seam allowance included

For instructions, visit:

[burdastyle.com/projects/charlie-reusable-grocery-bag/instructions/1](http://burdastyle.com/projects/charlie-reusable-grocery-bag/instructions/1)







CENTER / STRAIGHT GRAIN


2

Burdastyle  
open source sewing



Reusable Grocery Bag Pattern

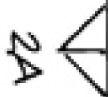
Bag

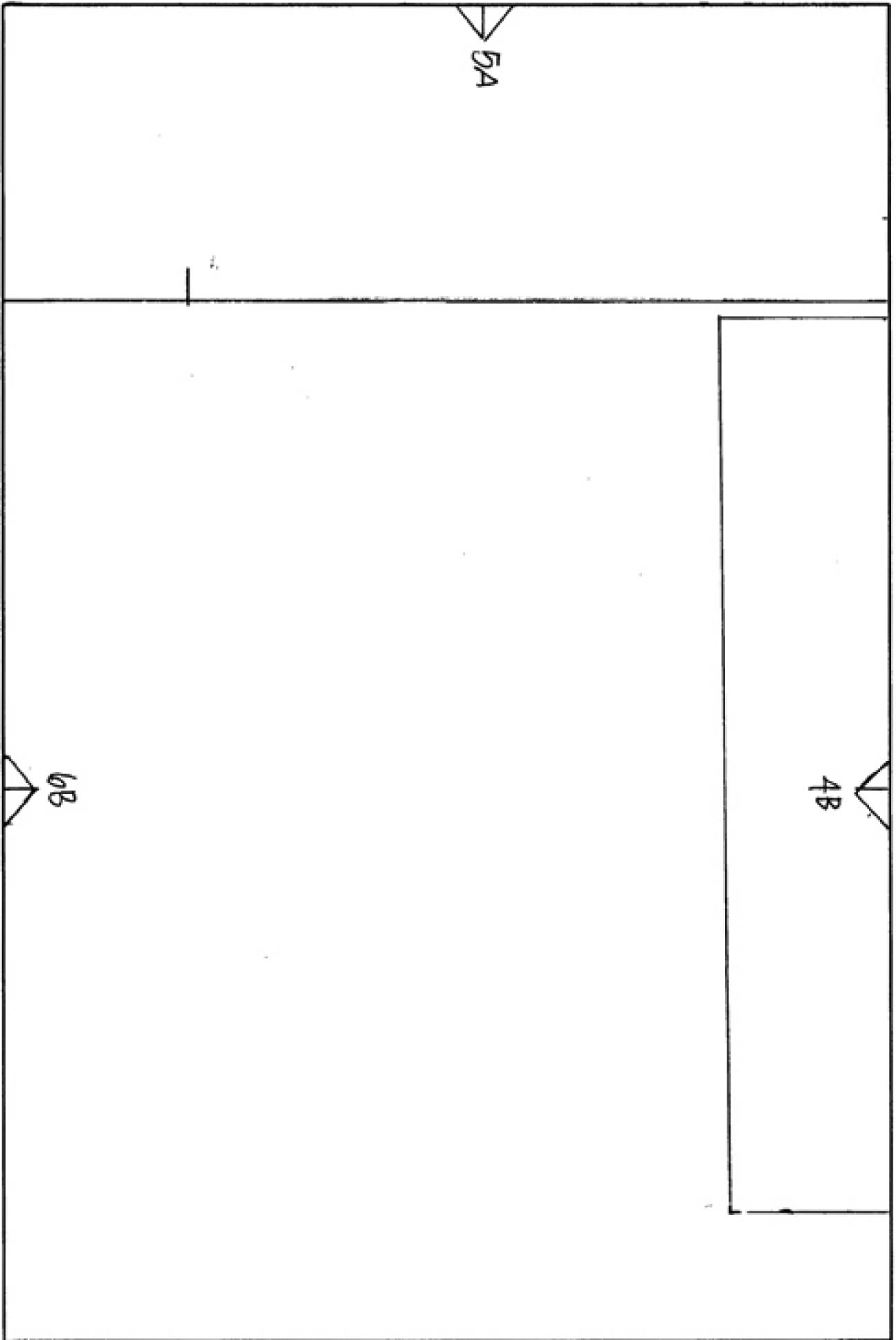
Cut 2 X on the fold 

5/8" (1.5 cm) seam allowance included

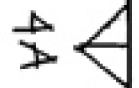
For Instructions, visit:

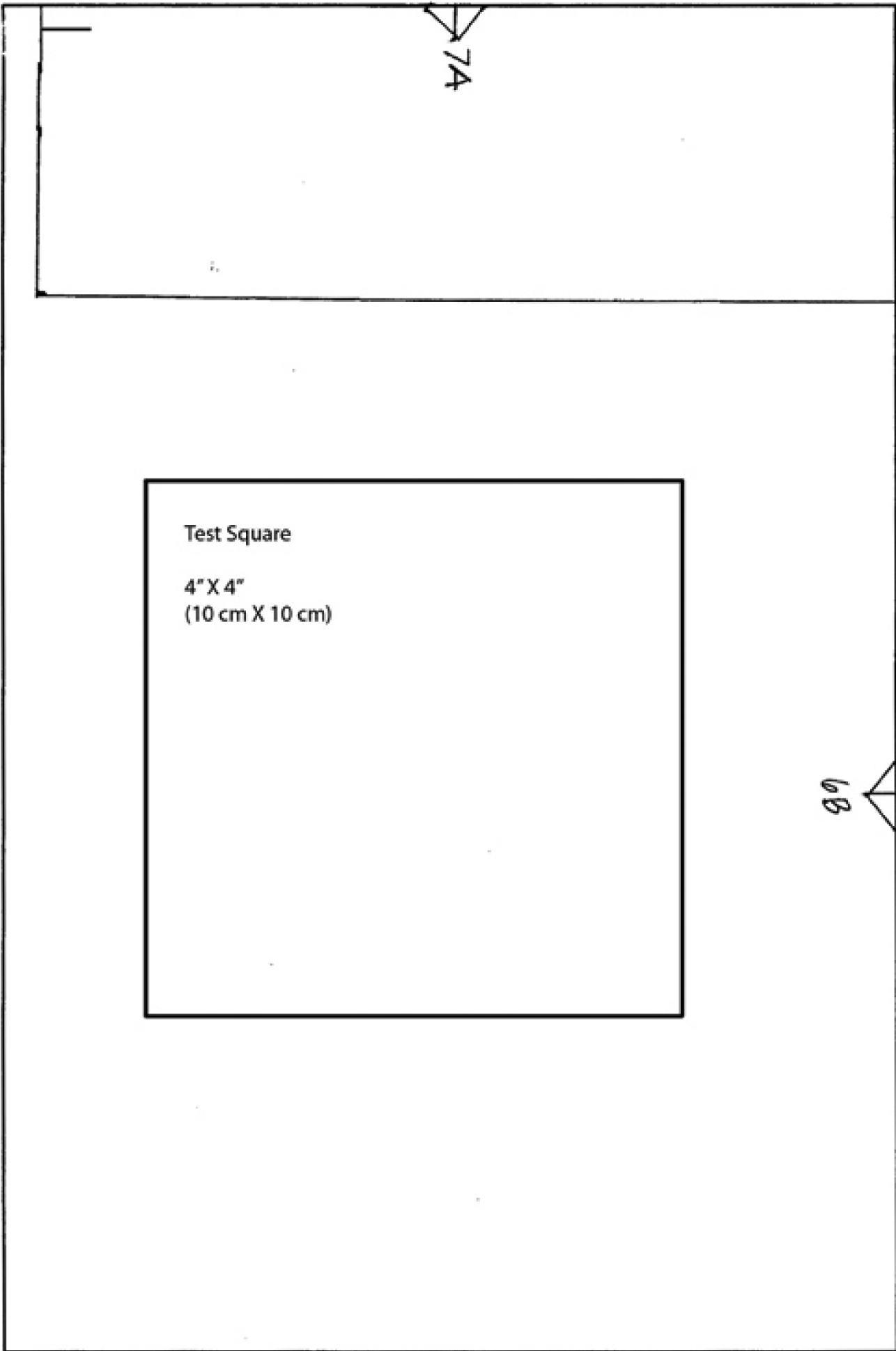
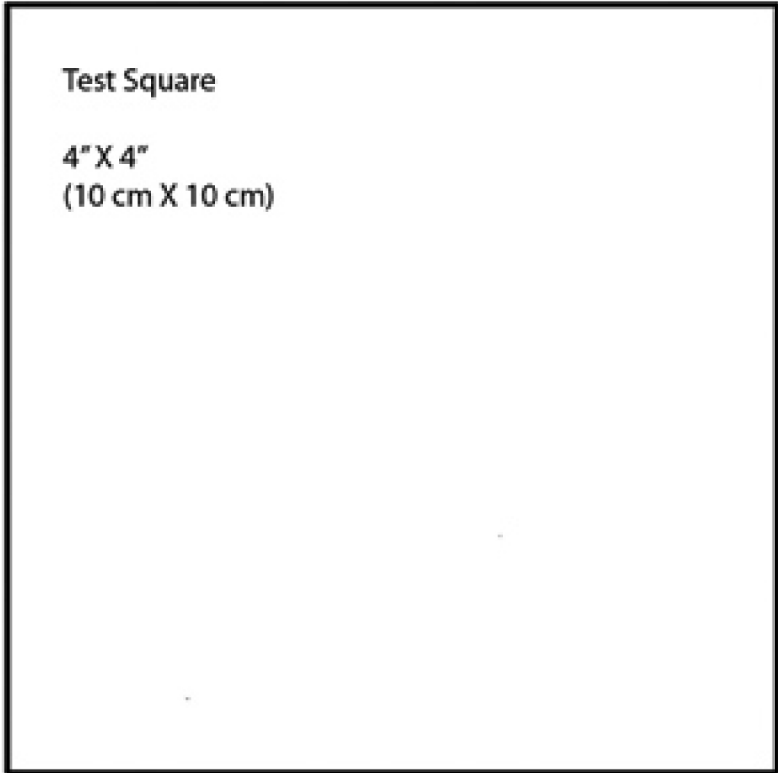
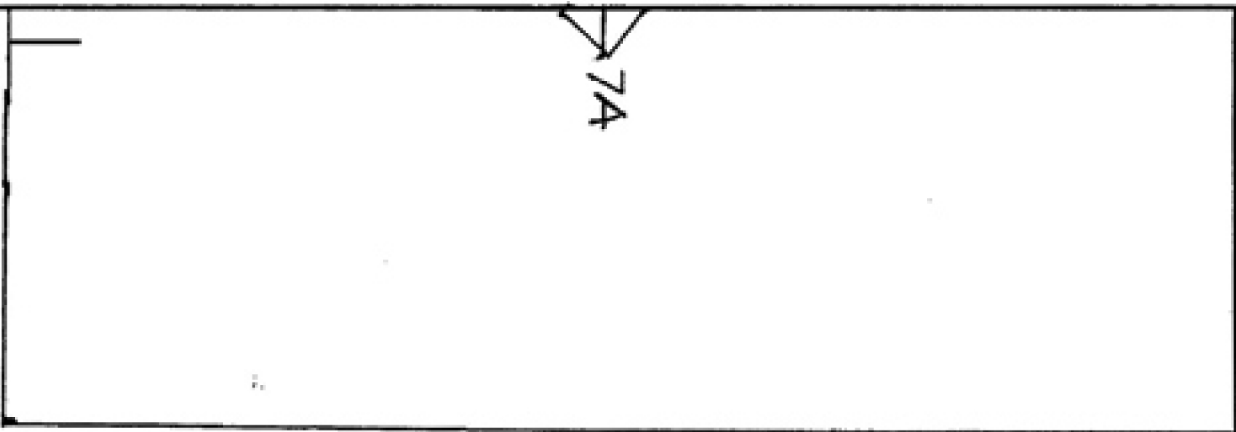
[burdastyle.com/projects/charlie-reusable-grocery-bag/instructions/1](http://burdastyle.com/projects/charlie-reusable-grocery-bag/instructions/1)





CUT ON FOLD









6A

7A