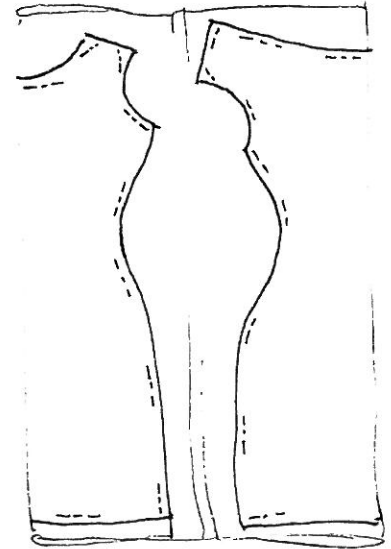


Cowl-dress/cowl-top, Instructions

by Karin Arver (IchigoGirl)
2009-08-17

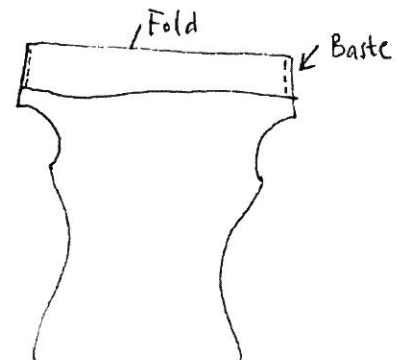
1. Assemble the pattern and cut the pattern-pieces. If you like, add desired amount of seam-allowance before cutting the pattern. I add 0,5cm when I sew in knits, since I use a simple overlock-stitch on my ordinary sewing-machine, and the seam is about 0,5cm wide.

2. Place the pattern on the fabric, both pieces on a fold, and pin it to prevent it slipping while cutting the fabric. Make sure the direction of the greatest stretch is across the front-pieces (the rib, if there is any, should end up as vertical lines, not horizontal).

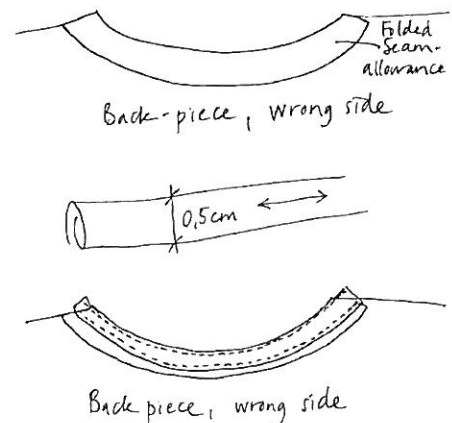


3. Cut the fabric. If you didn't add any seam-allowance in step one, do so now.

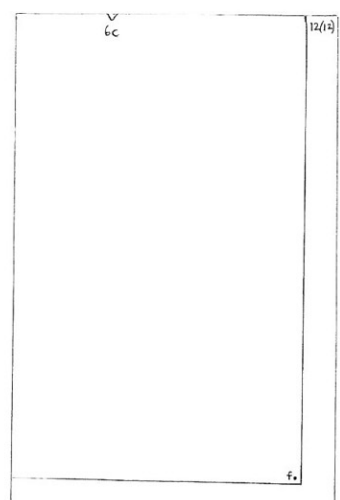
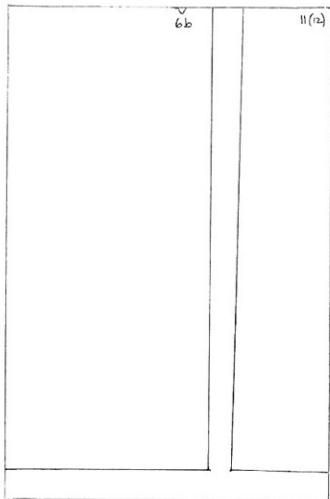
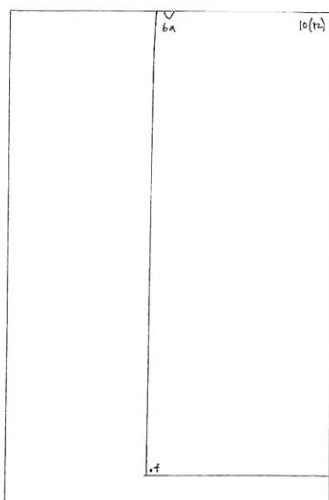
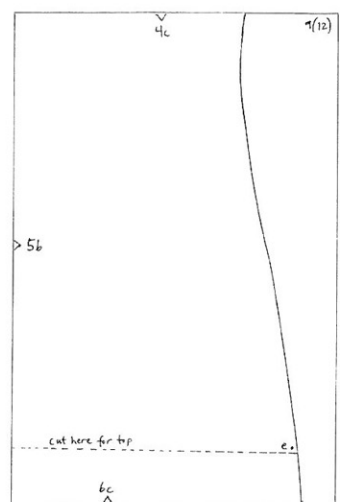
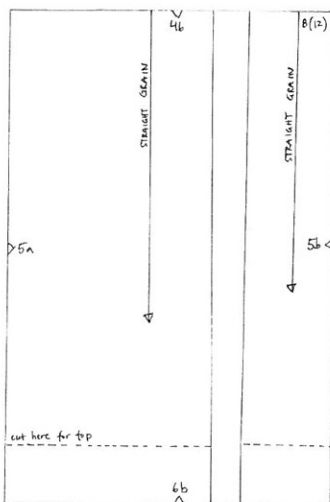
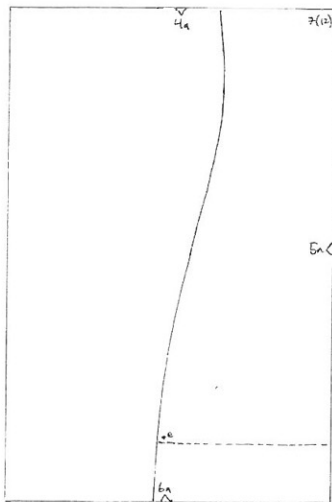
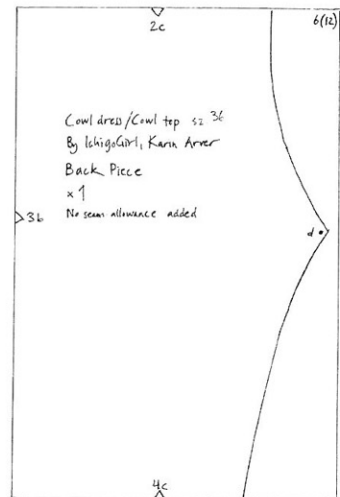
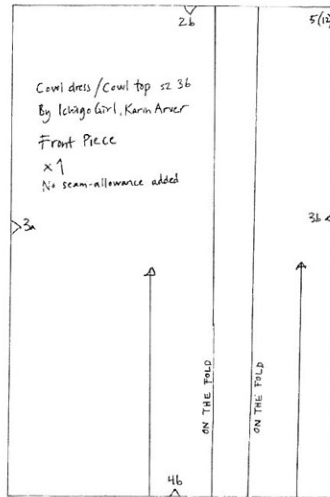
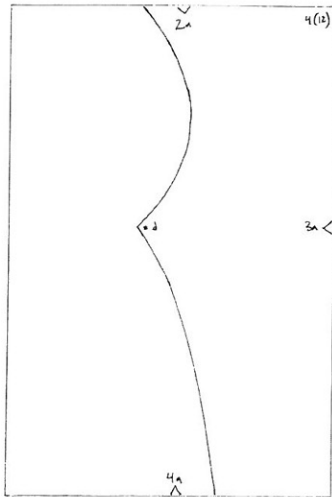
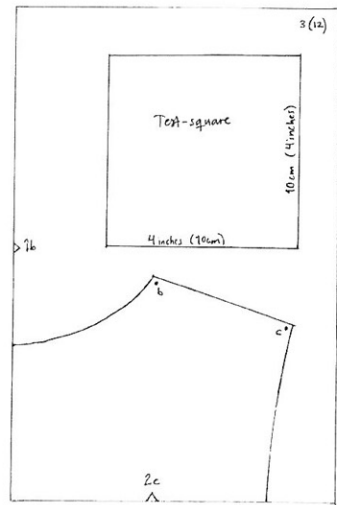
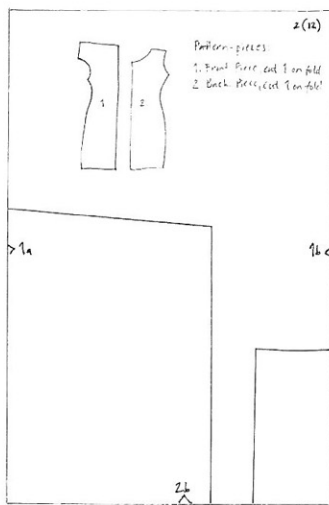
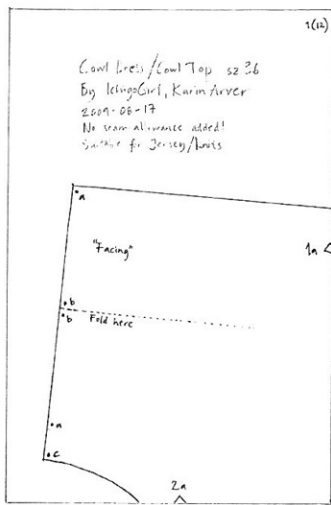
4. Fold the facing on the front-piece and line up the points marked "a" and "b". The facing should end up on the wrong side of the fabric. Pin and baste along the shoulder-seam.



5. Cut a strip of fabric about 30cm long and 1,5cm wide. The stretch should be across the strip (so that it stretches as little as possible along its length). Fold it in three (see the picture). Finish the neckline on the back-piece by making a fold along the seam-allowance, and stitching the folded strip of fabric on the wrong side of the fabric (pin first). Use ordinary straight stitches to prevent the neckline from stretching. Stitch about 1,5-2mm from the edges of the strip.



6. Line up the front-and back-piece shoulder-seams by matching the points marked “b” and “c”. Pin, and sew the seam using a stitch for stretch (or a small zig-zag).
7. Line up the front-and back-piece side-seams by matching the points marked “d” and “e”. Pin, and sew.
8. If you want to, finish the edges using a method of your choice (for example by making a hem and sewing it with a twin-needle). I’ve left them unfinished, since I’ve used very light fabrics that don’t fray.
9. Finished!



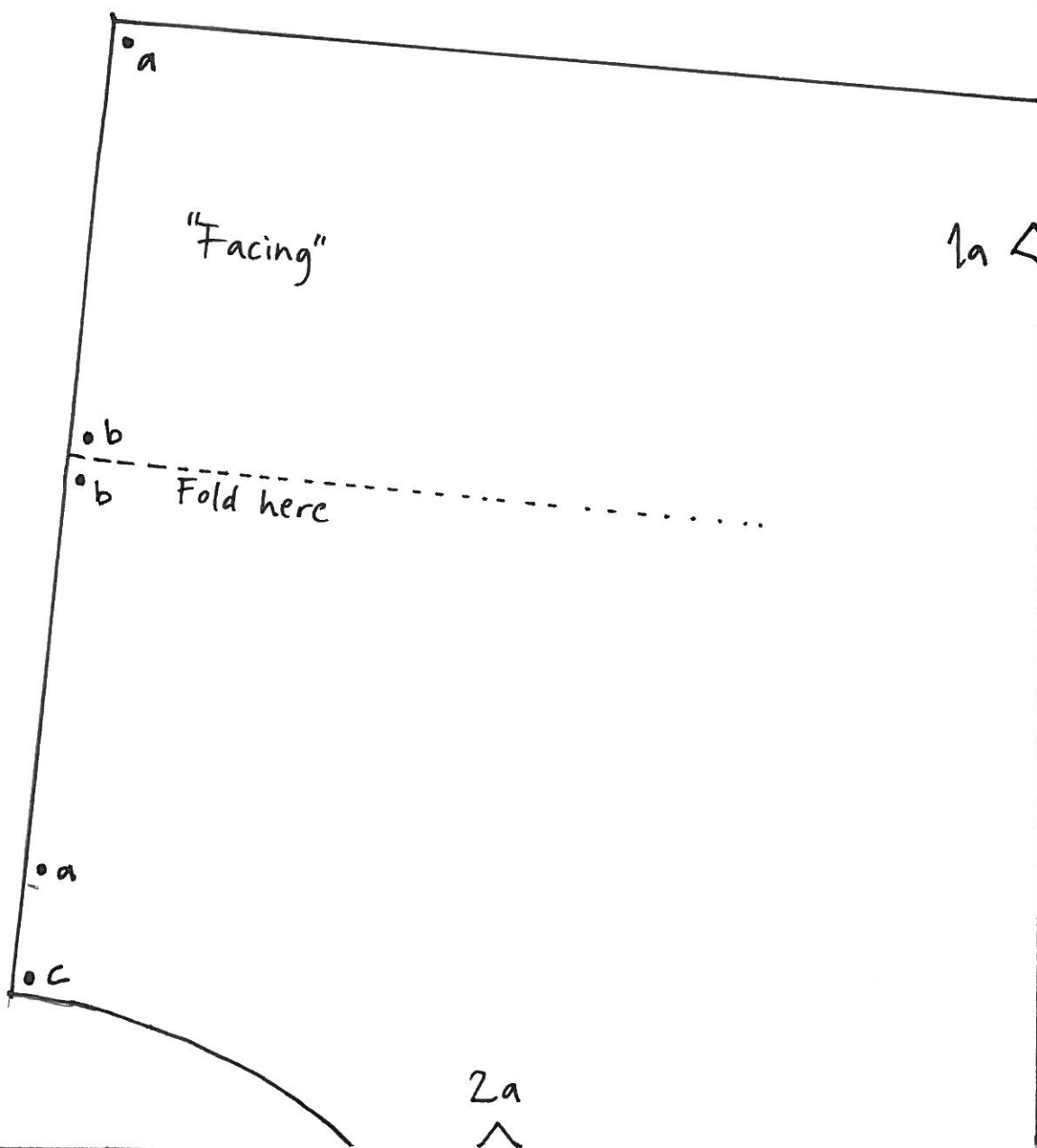
Cowl Dress / Cowl Top sz. 36

By IchigoGirl, Karin Arver

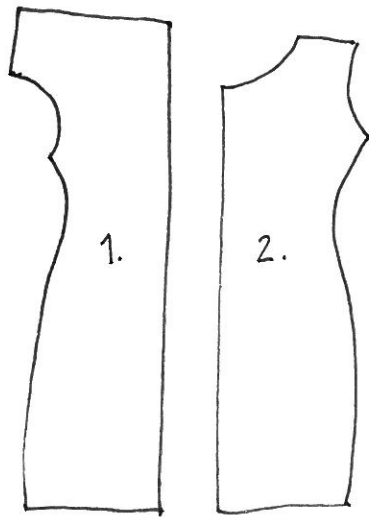
2009-08-17

No seam-allowance added!

Suitable for Jersey/knits



2(12)



Pattern-pieces:

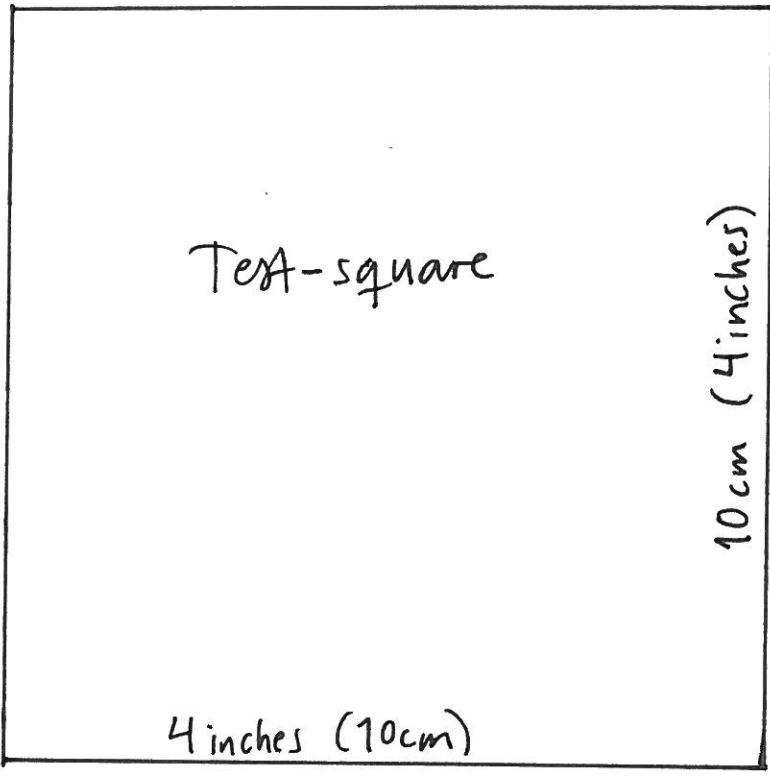
1. Front Piece, cut 1 on fold
2. Back Piece, cut 1 on fold

> 1a

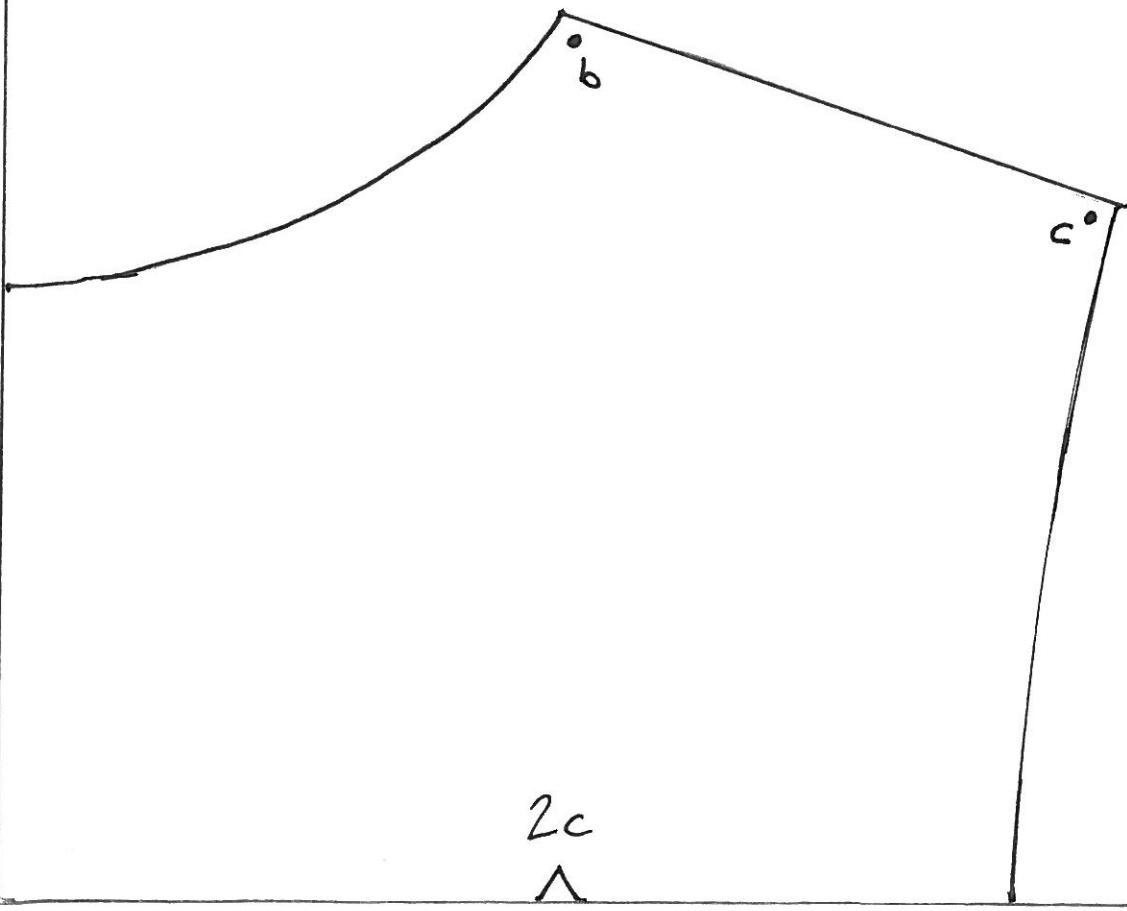
1b <

2b
^

3 (12)



> 1b



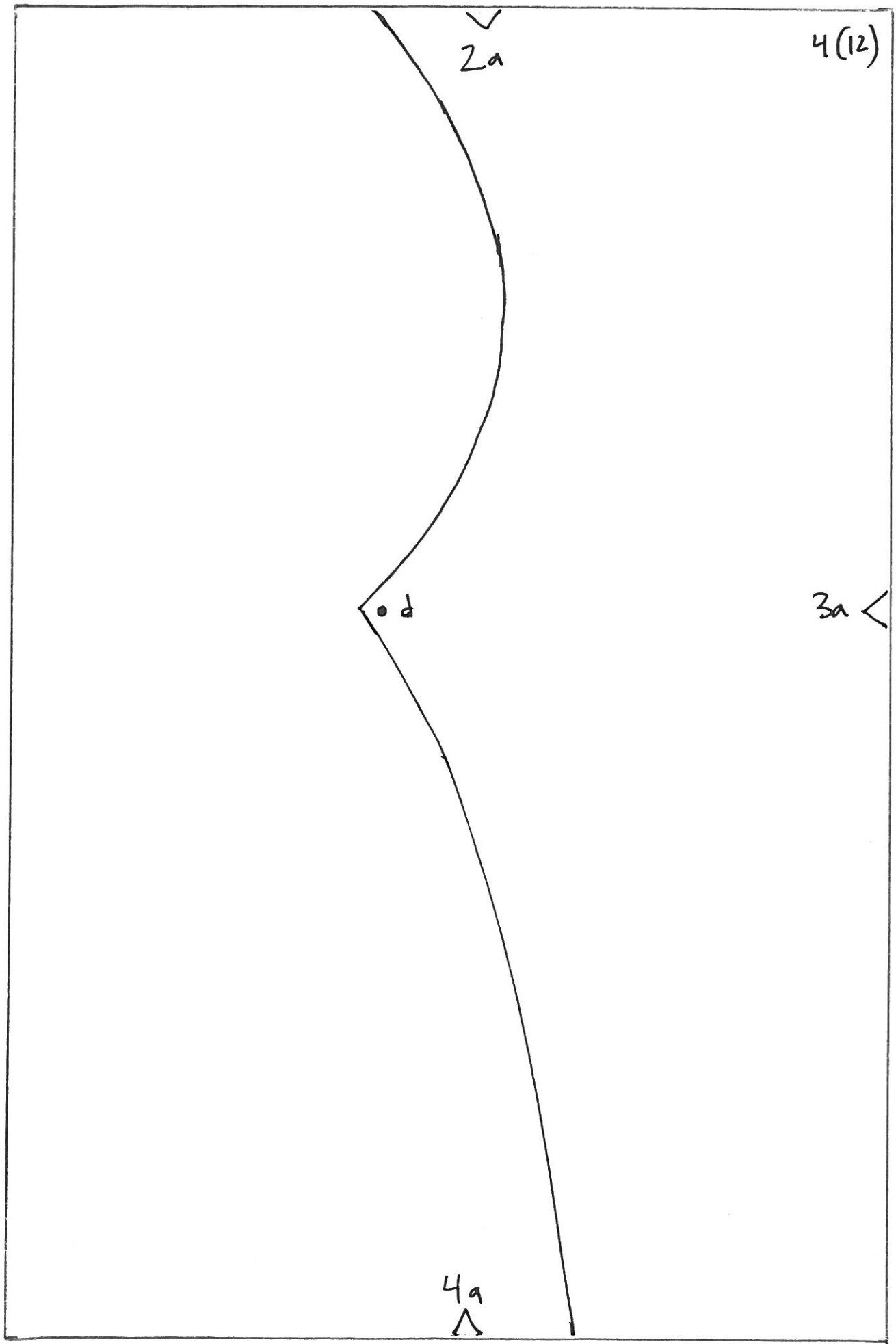
4(12)

✓
2a

• d

3a <

4a
△



2b

5(12)

Cowl dress / Cowl top sz. 36

By Ichigo Girl, Karin Arver

Front Piece

x 1

No seam-allowance added

3a

3b



4b



ON THE FOLD

ON THE FOLD



∨
2c

6(12)

Cowl dress / Cowl top sz. 36
By IchigoGirl, Karin Arver

Back Piece

x 1

No seam-allowance added

▷ 36

d •

4c
∧

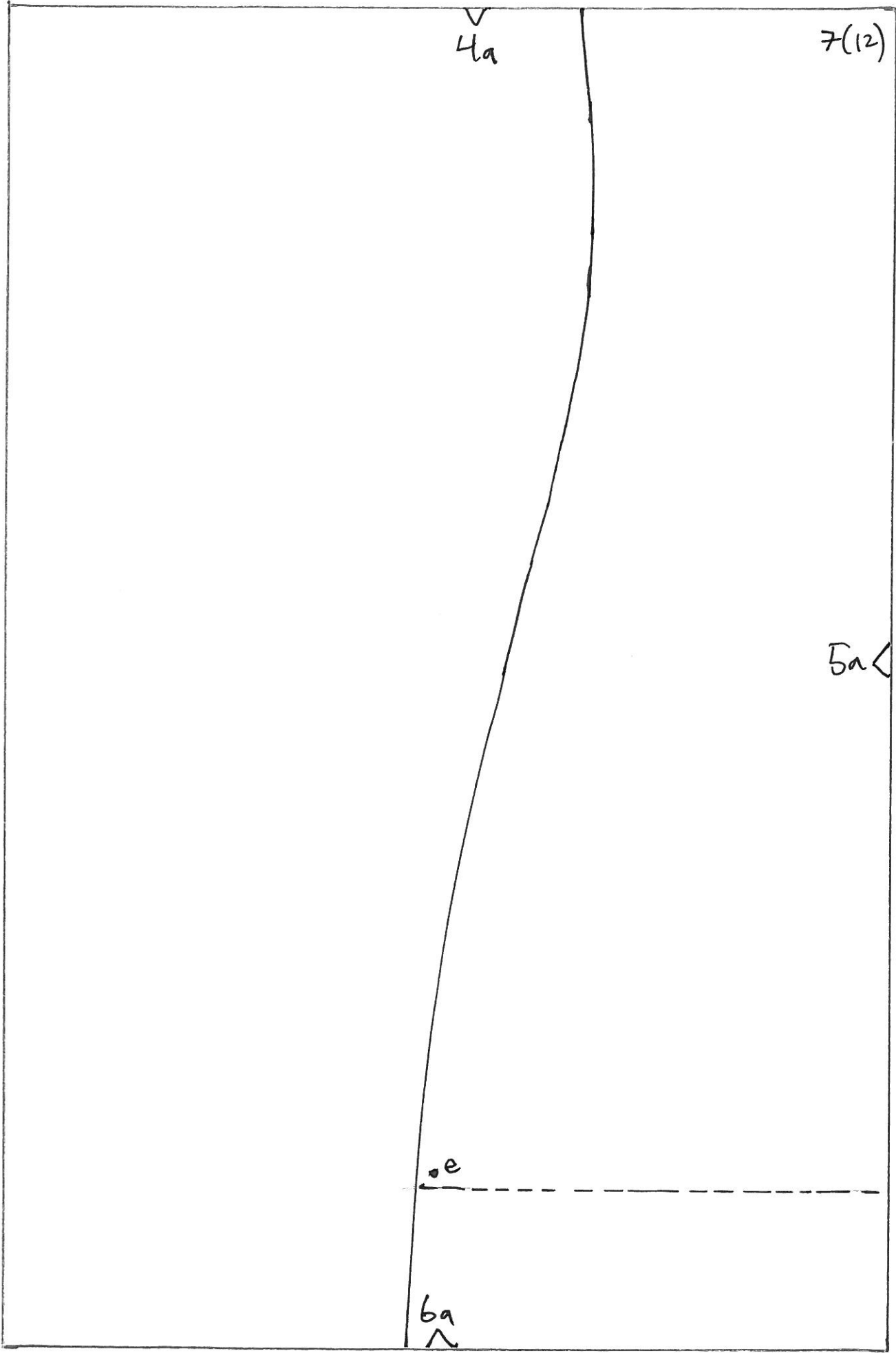
4a

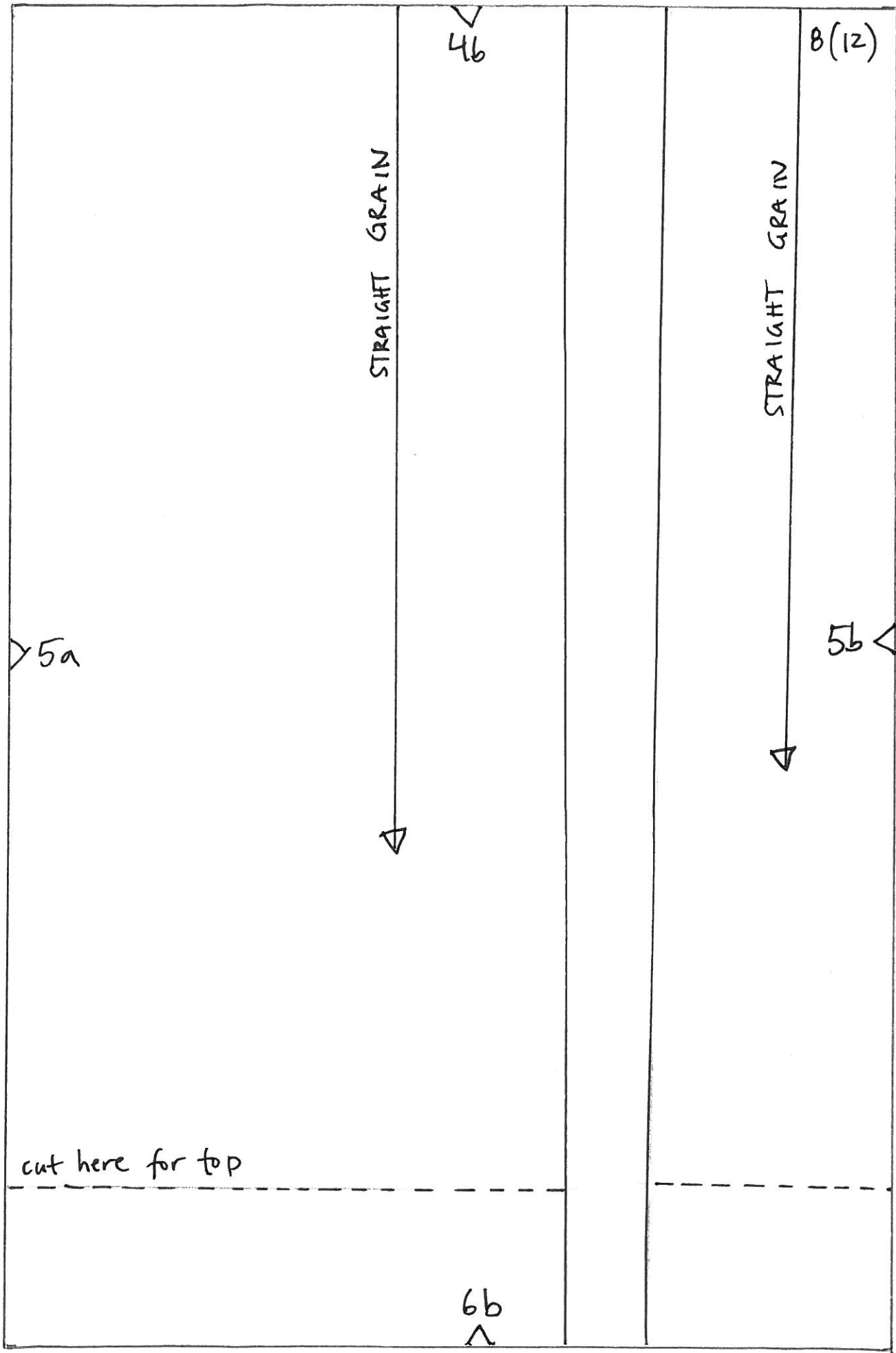
7(12)

5a

e

6a





4b

8(12)

STRAIGHT GRAIN

STRAIGHT GRAIN

5a

5b

cut here for top

6b

✓
4c

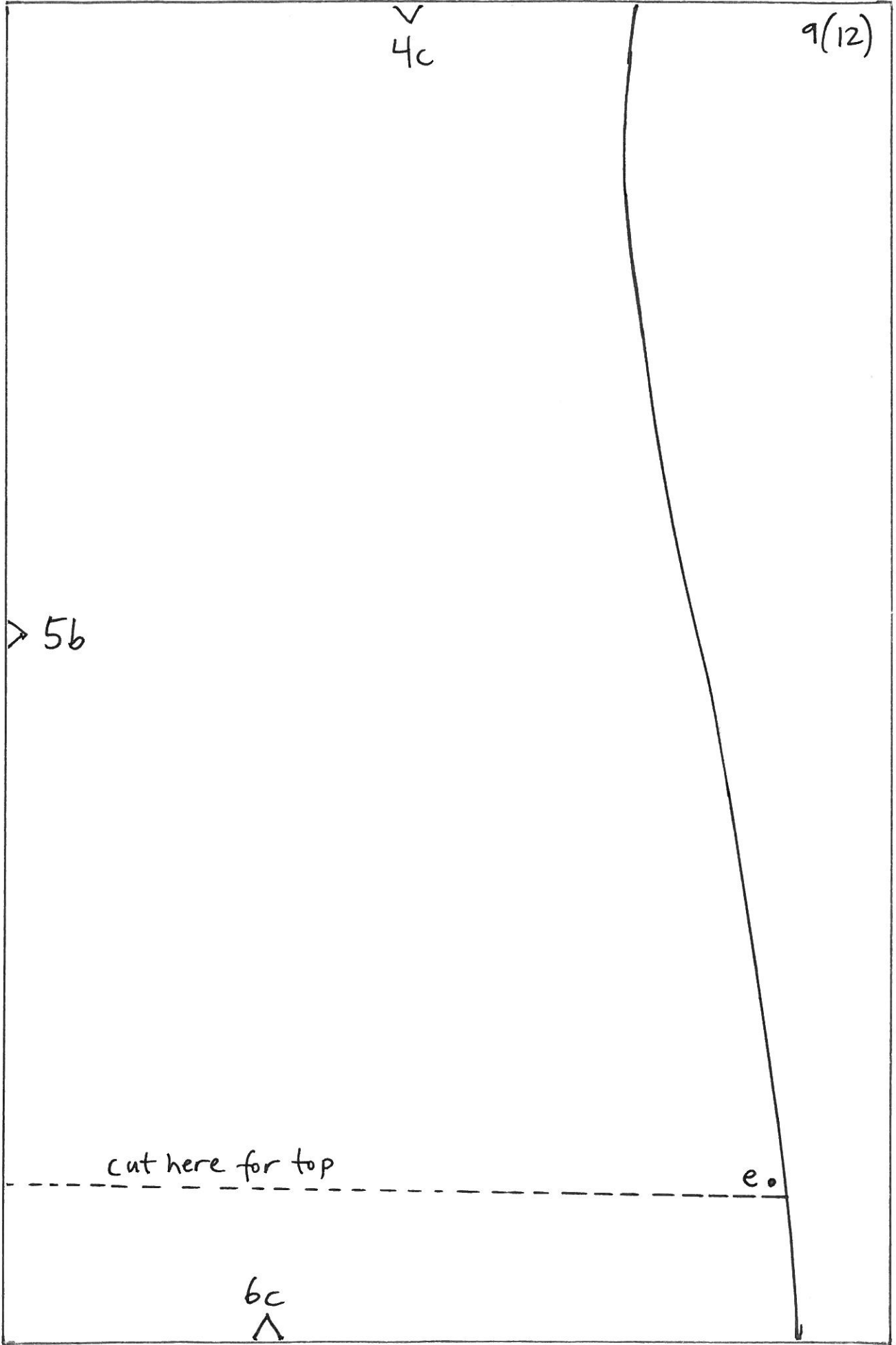
9(12)

▷ 5b

cut here for top

e.

bc
∧



✓
ba

10(12)

•f

✓
6b

11(12)

✓
6c

12(12)

f.