

133 Skirt

Burda sizes 34, 36, 38, 40, 42, 44
Skirt length 72 cm (28 1/2 ins)

Materials

Vichy check,
width: 150 cm (59 ins)
length: 1.60 m (1 3/4 yds) for all sizes.

Embroidered doupion silk,
width: 135 cm (53 ins)
length: 0.90 m (1 yd).

Pencil pleating tape,
width: approx. 5 cm (2 ins)
length: 1.05 – 1.10 – 1.15 – 1.20 – 1.25 – 1.30 m
(1 1/4 – 1 1/4 – 1 3/8 – 1 3/8 – 1 1/2 – 1 1/2 yds).

Interfacing.

1 invisible zip, 22 cm (9 ins) long, and special presser foot.

Recommended fabrics: Skirt fabrics of cotton, linen, silk, viscose rayon or blends.

Preparations

Print the pattern out on letter or A4 sized paper. It is **very important** to not scale the document. Your pattern will print on multiple pages, which you will then tile together. Arrange the sheets on a large, hard and flat surface matching up the numbers and letters (i.e. 6A to 6A). Cut or fold one of the sides and match the edge to it's corresponding side. Then, tape down in place so paper is secure.

Burda style magazine patterns do not have seam allowance included.

Seam and hem allowance to be added: Seams and edges 1.5 cm (5/8 in), sash 1 cm (3/8 in), hem 4 cm (1 5/8 ins).



Cutting Out

Draft the following pieces NOT included in the pattern:

Vichy check:

a) front and back skirt piece, each 100 – 105 – 110 – 115 – 120 – 125 cm (39 1/2 – 41 1/2 – 43 1/2 – 45 1/4 – 47 1/4 – 49 1/4 ins) wide, 72 cm (28 1/2 ins) long,

Doupion silk:

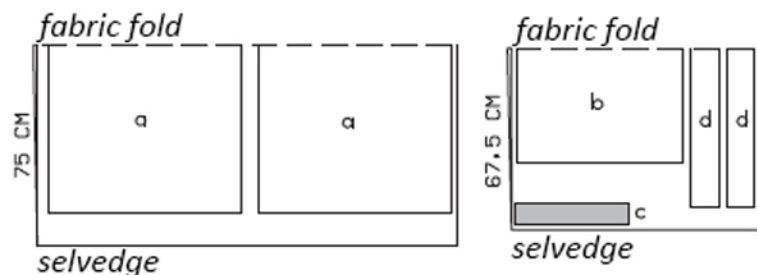
b) apron piece, 70 – 73 – 76 – 79 – 82 – 85 cm (27 3/4 – 28 3/4 – 30 – 31 1/4 – 32 1/2 ins) wide, 62 cm (24 1/2 ins) long,

c) 2 waistband pieces, 32.5 – 34.5 – 36.5 – 38.5 – 40.5 – 42.5 cm (12 7/8 – 13 5/8 – 14 3/8 – 15 1/4 – 16 – 16 3/4 ins) long, 8 cm (3 1/4 ins) wide, finished width 4 cm (1 5/8 ins),

d) 2 sashes, 108 – 110 – 112 – 114 – 116 – 118 cm (42 1/2 – 43 1/2 – 44 1/4 – 45 – 45 3/4 – 46 1/2 ins) long, 10 cm (4 ins) wide.

Interfacing: Iron to wrong side of waistband pieces.

Sizes 34-44



Sewing

On apron piece, press allowances on lower and side edges to wrong side. Pin apron piece to skirt front, with wrong side facing right side and matching centres – upper edges lie together. Edgestitch in place. Gather upper edge of skirt front to 32.5 – 34.5 – 36.5 – 38.5 – 40.5 – 42.5 cm (12 7/8 -13 5/8 – 14 3/8 – 15 1/4 – 16 – 16 3/4 ins), not gathering side seam allowances.

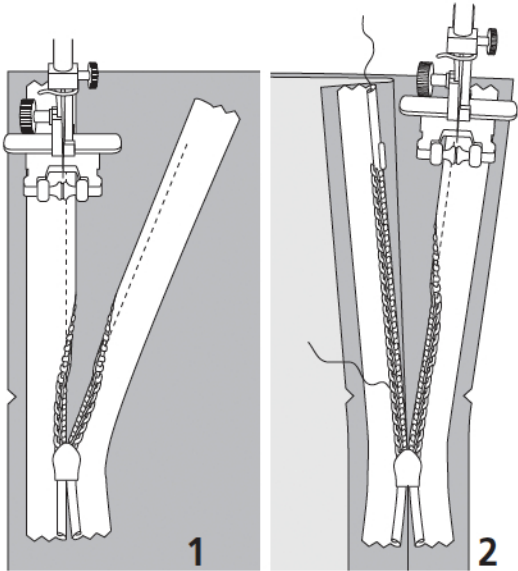
On wrong side of skirt back, pin pencil pleating tape to upper skirt edge, directly next to marked seam line. Stitch tape in place along upper and lower edges and between pairs of pull-strings. Pull strings to gather to 32.5 – 34.5 – 36.5 – 38.5 – 40.5 – 42.5 cm (12 7/8 – 13 5/8 – 14 3/8 – 15 1/4 – 16 – 16 3/4 ins). Knot strings. Side seam allowance are left ungathered.

Stitch right side seam. Press seam allowances open and neaten edges.

On each sash, press allowances on long edges and one end to wrong side, turn in, and stitch in place. Lay two pleats in unhemmed end of each sash, for a finished width of 4 cm (1 5/8 ins).

Fold waistband pieces in half lengthwise, wrong side facing in, and press. Unfold waistband pieces again. On back waistband piece, baste sashes to outer half of waistband ends, with wrong side facing right side. Stitch right side seam of waistband, catching sash. Press seam allowances open. Stitch waistband to upper skirt edge. Press allowances of attachment seam and of other long waistband edge onto waistband. Sew invisible zip in place, beginning at upper waistband edge (pressed fold), see the “Helpful Hint” on page 5. Stitch left side seam from lower edge to zip slit. On inside, sew waistband edges to zip tapes and along waistband attachment seam.

Turn hem allowance to wrong side, turn raw edges under, and stitch in place, 2 cm (3/4 in) from lower edge.



These special zippers come in various lengths. The zipper should be at least 2 cm (3/4 in) longer than the slit. It is sewn in place before the seam below the slit is stitched. A special presser foot is required to sew the zipper in place.

Sewing the zipper in place:

Open the zipper and push the coil back with your thumbnail to reveal the seam marking between the tape and the coil. Place the open zipper right side down on the right fabric side of one slit edge.

In order to stitch the zipper in place exactly along the marked seam line, you must first calculate the distance between the tape edge and the fabric edge as follows: width of seam allowance minus 1 cm (3/8 in) tape width = distance from edge of fabric. This will yield a value of 5 mm (3/16 in) if the width of the seam allowance is 1.5 cm (5/8 in).

Pin the top end of the zipper tape in place, the calculated distance from the edge of the fabric. The bottom end of the zipper will extend past the marked end of the slit. Place the presser foot on the zipper so that the coil is in the notch to the right of the needle (1). Stitch zipper in place, from the top to the marked end of the slit. Close zipper.

Place the other zipper tape face down on the opposite slit edge and pin in place at the top. Open zipper again. Place the presser foot on the top end of the zipper so that the coil is in the notch to the left of the needle (2). Sew the zipper in place, from the top to the end of the slit. Close zipper.

Now stitch the seam below the zipper, from bottom to top. Turn the loose lower end of the zipper out of the way, over the seam allowance. Stitch as close as possible to the last stitches of the zipper seams. Trim away excess zipper and bind the end with a scrap of fabric.

Additional Information:

Burda patterns do not include seam and hem allowances. We recommend adding 1-2 cm (3/8 - 3/4 inch) for seams and 2-5 cm (3/4 - 2 inch/es) for hems. Refer to your specific pattern instructions for exact measurements.

The fabric requirements are based on the fabric used for the original designs. These amounts will change if you use fabric of a different width. The pattern of the fabric determines whether all the pieces must be cut in the same direction or whether some can be reversed to save fabric.

The cutting layout printed with the instructions shows the best way to place the pattern pieces on our original fabric. Fold the fabric double with the right side facing in. The fabric then has a fold edge and a selvedge edge. When cutting from a single fabric layer, the right side should face up.

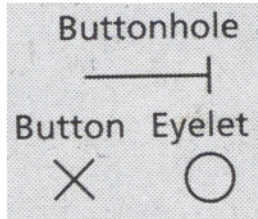
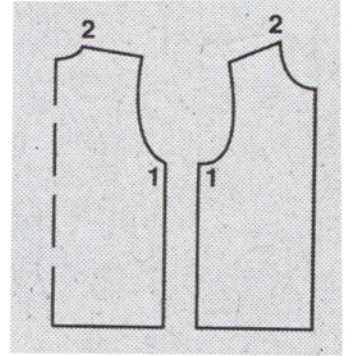
Pattern pieces which are shown in the cutting layout with broken outlines should be pinned to the fabric with their printed side facing down.

Grey shaded areas in the cutting layout indicate which pieces are to be interfaced.

Transfer the pattern piece lines to the wrong side of your fabric with burda dressmaker's carbon paper. Hand-baste along lines (e.g. for pockets or centre front) to make them visible on the right side of the fabric.

Key Symbols:

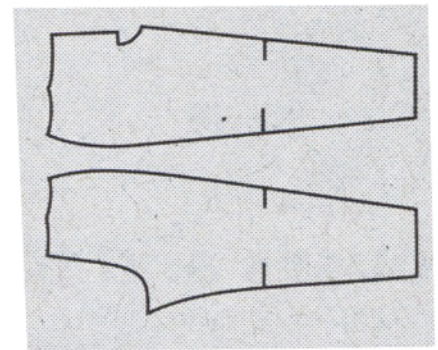
Seam numbers
show where pattern pieces must be sewn together. Match pieces with the same numbers.



Seam marks
on long seams. Match the small symbols to one another.



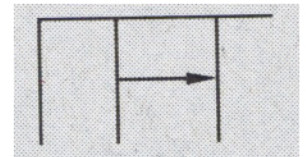
Presser foot
is the symbol for seam and top-stitching lines.



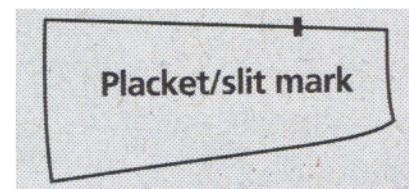
Scissors
indicate edges to be cut without seam allowances and also slash lines, e.g. pocket openings.



Pleat symbol
Fold pleat in direction of arrow.



Placket/slit mark
Indicates beginning/end of placket/slit.



Gather
Ease
Stretch

