

125B Dress

Height 76, 80, 84, 88, 92 cm

Length from waist 51 cm (20 1/4 ins)

Materials

Crosswise stretch silk satin,
width: 140 cm (55 in)

length: 2.20 – 2.35 – 2.40 – 2.55 – 2.55 m
(2 5/8 – 2 5/8 – 2 5/8 – 2 7/8 – 2 7/8 yds).

Recommended fabrics: Lightweight, softly draping fabrics. Use stretch fabrics only.

Preparations

Print the pattern out on letter or A4 sized paper. It is **very important** to not scale the document. Your pattern will print on multiple pages, which you will then tile together. Arrange the sheets on a large, hard and flat surface matching up the numbers and letters (i.e. 6A to 6A). Cut or fold one of the sides and match the edge to its corresponding side. Then, tape down in place so paper is secure.

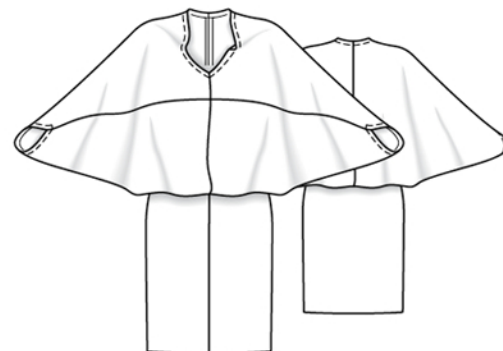
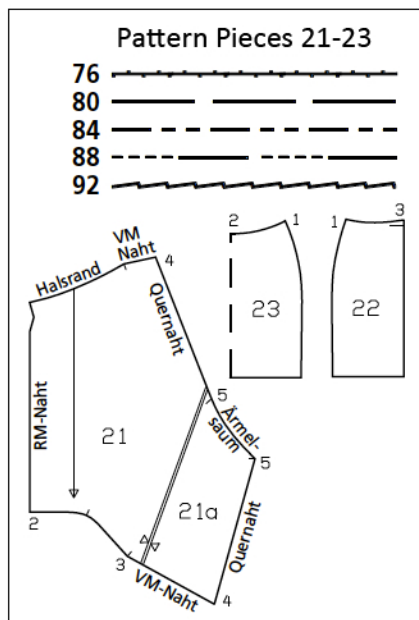
Trace the pattern pieces from the pattern sheet following the lines and markings for style 125B and your size.

burda style magazine patterns do not have seam allowance included.

Seam and hem allowance to be added: Seams 1.5 cm (5/8 in), neck edge 2 cm (3/4 in), sleeve hems 2 cm (3/4 in), dress hem 4 cm (1 5/8 ins).

Cutting Out

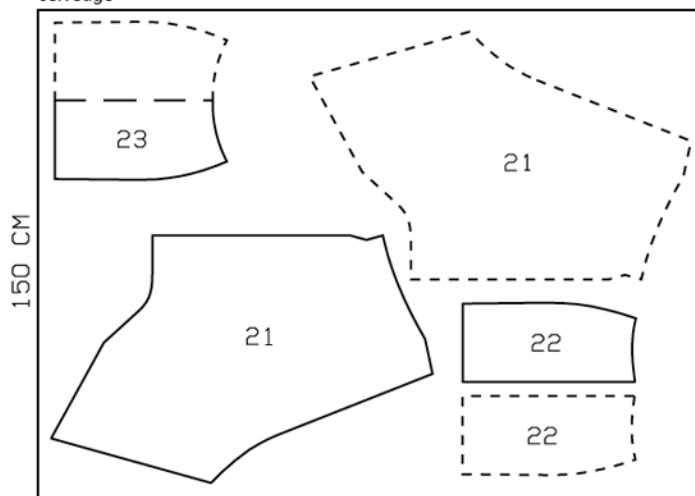
- 21 dress bodice 2x
- 22 front skirt panel 2x
- 23 back skirt panel, on a fold 1x



Cut from a single layer of fabric, right side facing up. Pieces shown with a broken outline should be placed on the fabric printed side facing down.

Sizes 76-88

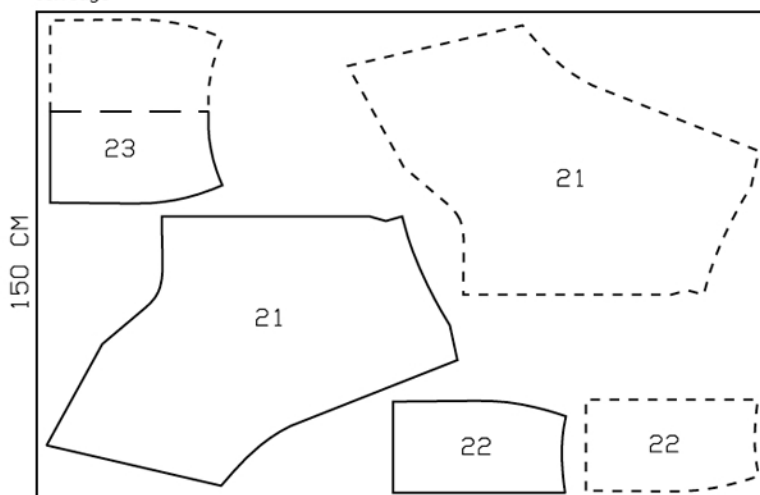
selvage



selvage

Size 92

selvage



selvage

Sewing

Note: Stitch seams on stretch fabrics with a special stretch stitch or with a narrow zigzag stitch.

Stitch side seams on skirt. Stitch centre back seam of dress bodice. Press seam allowances open.

Press allowance on neck edge of dress bodice to inside (between seam marks), turn in to 1 cm (3/8 in) wide, and stitch. Press allowances on sleeve hem edges to inside, between seam marks (seam number 5), turn in to 1 cm (3/8 in) wide, and press again. Pin sleeve hem allowances in place at corners and leave remainder loose. Fold dress bodice down horizontally (at half of sleeve hem edge) right side facing in. Pin edges together from each seam number 4 to seam number 5. Stitch from each seam number 4 to seam number 5, catching pinned end of sleeve hem allowances. Turn other end back. Press allowances up. Stitch sleeve hem allowances in place.

Stitch skirt to dress bodice (seam numbers 3 and 2), beginning and ending stitching exactly at marking (seam number 3). Press seam allowances up.

Stitch centre front seam of bodice and skirt as continuous seam. Press seam allowances open.

Press hem allowance to inside and sew in place by hand.

Additional Information:

Burda patterns do not include seam and hem allowances. We recommend adding 1-2 cm (3/8 - 3/4 inch) for seams and 2-5 cm (3/4 - 2 inch/es) for hems. Refer to your specific pattern instructions for exact measurements.

The fabric requirements are based on the fabric used for the original designs. These amounts will change if you use fabric of a different width. The pattern of the fabric determines whether all the pieces must be cut in the same direction or whether some can be reversed to save fabric.

The cutting layout printed with the instructions shows the best way to place the pattern pieces on our original fabric. Fold the fabric double with the right side facing in. The fabric then has a fold edge and a selvedge edge. When cutting from a single fabric layer, the right side should face up.

Pattern pieces which are shown in the cutting layout with broken outlines should be pinned to the fabric with their printed side facing down.

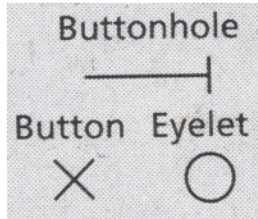
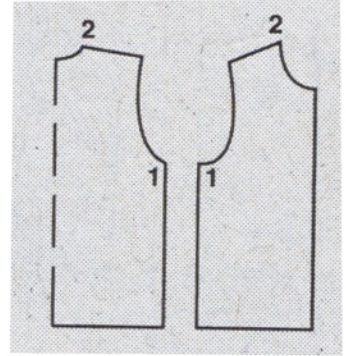
Grey shaded areas in the cutting layout indicate which pieces are to be interfaced.

Transfer the pattern piece lines to the wrong side of your fabric with burda dressmaker's carbon paper. Hand-baste along lines (e.g. for pockets or centre front) to make them visible on the right side of the fabric.

Key Symbols:

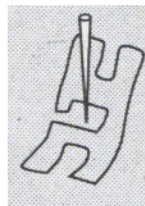
Seam numbers

show where pattern pieces must be sewn together. Match pieces with the same numbers.

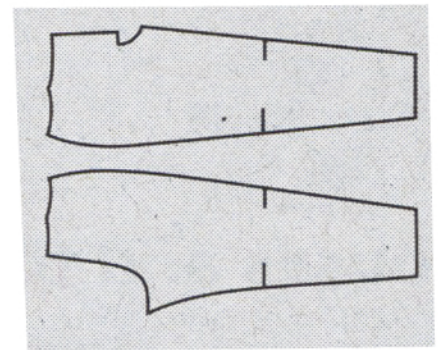


Seam marks

on long seams. Match the small symbols to one another.



Presser foot is the symbol for seam and top-stitching lines.



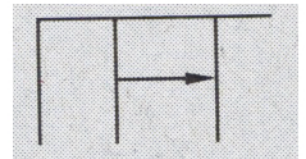
Scissors

indicate edges to be cut without seam allowances and also slash lines, e.g. pocket openings.



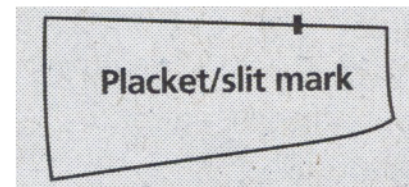
Pleat symbol

Fold pleat in direction of arrow.



Placket/slit mark

Indicates beginning/ end of placket/slit.



Gather
Ease
Stretch

