

108 Top

Burda sizes 36, 38, 40, 42, 44

Back length approx. 70 cm (28 ins)

Sleeves approx. 25 cm (10 ins) shorter than normal

Materials

Jacquard,
width: 140 cm (55 ins)
length: 1.45 – 1.50 – 1.55 – 2.05 – 2.05 m
(1 3/4 – 1 3/4 – 1 3/4 – 2 1/4 – 2 1/4 yds).

Recommended fabrics: Lightweight fabrics.

Preparations

Print the pattern out on letter or A4 sized paper. It is **very important** to not scale the document. Your pattern will print on multiple pages, which you will then tile together. Arrange the sheets on a large, hard and flat surface matching up the numbers and letters (i.e. 6A to 6A). Cut or fold one of the sides and match the edge to its corresponding side. Then, tape down in place so paper is secure.

Trace the pattern pieces from the pattern sheet following the lines and markings for style 108 and your size.

burda style magazine patterns do not have seam allowance included.

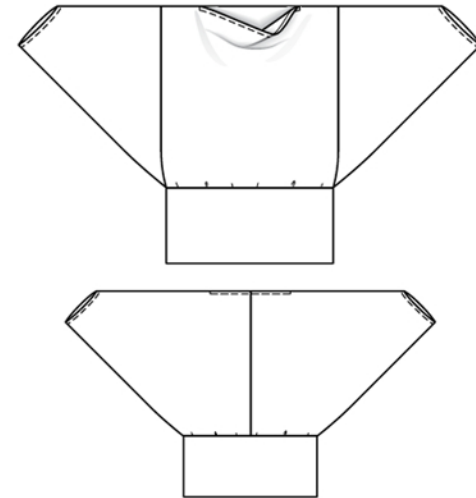
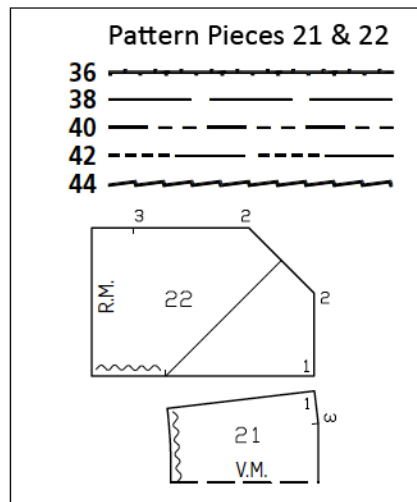
Seam and hem allowance to be added: Seams and edges 1.5 cm (5/8 in).

Cutting Out

21 front, on a fold 1x
22 back with integrated sleeve 2x

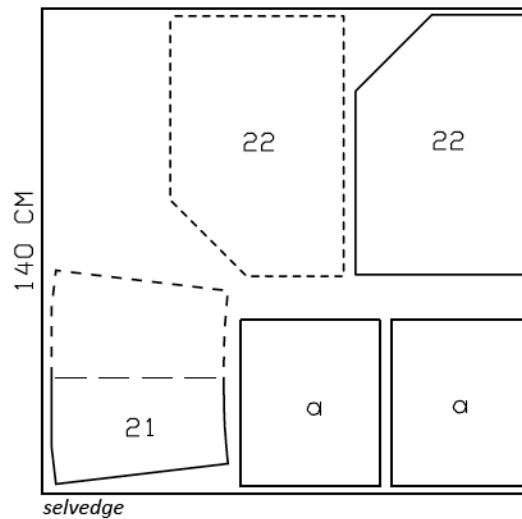
Draft the following piece NOT included in the pattern:

a) 2 hem band pieces, 48 – 50 – 52 – 54 – 56 cm (19 – 19 3/4 – 20 1/2 – 21 1/4 – 22 1/4 ins) long, 40 cm (16 ins) wide, finished width 20 cm (8 ins).



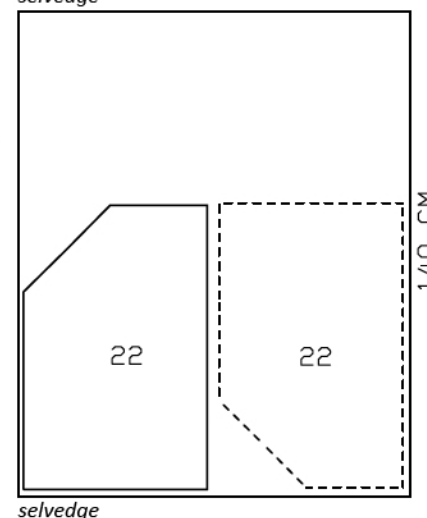
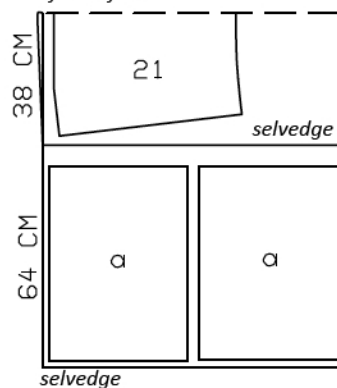
Sizes 36 – 40

selvedge



Right side faces in on a double layer of fabric. Right side faces up on a single layer of fabric. Cut right and left pieces as opposites.

Sizes 42, 44
fabric fold



Sewing

Stitch centre back seam. Neaten seam allowances together and press to one side. Stitch sleeve sections of back to side edges of front, from seam number 1 to seam mark. Clip seam allowances at seam mark. Press allowances toward sleeves.

On each integrated sleeve, press hem allowance to inside, between seam numbers 2, turn raw edge under, and stitch in place.

Fold each integrated sleeve on fold line, right side facing in. Stitch shoulder seam, from seam mark (seam number 3), and upper sleeve seam as continuous seam. Press seam open.

Press allowance on neck edge to inside, turn edge under, and stitch in place.

Stitch side seams on hem band. Fold hem band in half, wrong side facing in. Stitch hem band edges together to lower front and back edges, easing front and back edges to match waistband. Press allowances up.

Additional Information:

Burda patterns do not include seam and hem allowances. We recommend adding 1-2 cm (3/8 - 3/4 inch) for seams and 2-5 cm (3/4 - 2 inch/es) for hems. Refer to your specific pattern instructions for exact measurements.

The fabric requirements are based on the fabric used for the original designs. These amounts will change if you use fabric of a different width. The pattern of the fabric determines whether all the pieces must be cut in the same direction or whether some can be reversed to save fabric.

The cutting layout printed with the instructions shows the best way to place the pattern pieces on our original fabric. Fold the fabric double with the right side facing in. The fabric then has a fold edge and a selvedge edge. When cutting from a single fabric layer, the right side should face up.

Pattern pieces which are shown in the cutting layout with broken outlines should be pinned to the fabric with their printed side facing down.

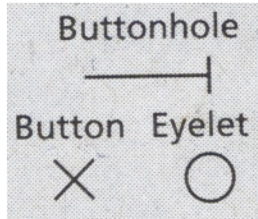
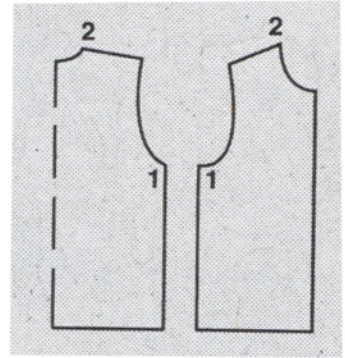
Grey shaded areas in the cutting layout indicate which pieces are to be interfaced.

Transfer the pattern piece lines to the wrong side of your fabric with burda dressmaker's carbon paper. Hand-baste along lines (e.g. for pockets or centre front) to make them visible on the right side of the fabric.

Key Symbols:

Seam numbers

show where pattern pieces must be sewn together. Match pieces with the same numbers.

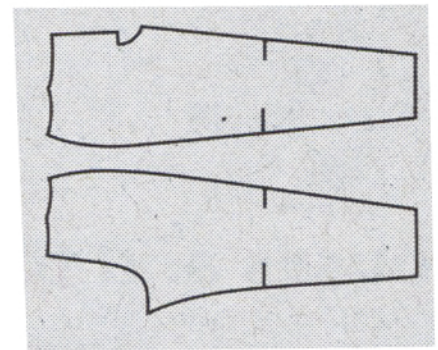


Seam marks

on long seams. Match the small symbols to one another.



Presser foot is the symbol for seam and top-stitching lines.



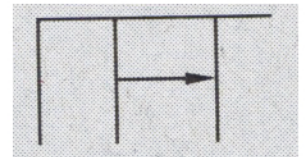
Scissors

indicate edges to be cut without seam allowances and also slash lines, e.g. pocket openings.



Pleat symbol

Fold pleat in direction of arrow.



Placket/slit mark

Indicates beginning/ end of placket/slit.



Gather
Ease
Stretch

