

133 Dress

and infinity scarf

Burda sizes 44, 46, 48, 50, 52

Length from elastic casing 62 cm

(elastic casing = waist)

7/8-sleeves, approx. 10 cm (4 ins) shorter than normal

Materials

Dress: Georgette,
width: 145 cm (57 ins)
length: 2.00 – 2.00 – 2.00 – 2.00 – 2.20 m
(2 1/4 – 2 1/4 – 2 1/4 – 2 1/4 – 2 1/2 yds).

Interfacing.

Elastic, 1.5 cm (5/8 in) wide: 0.85 – 0.90 – 0.95 –
1.05 – 1.10 m (1 – 1 – 1 1/8 – 1 1/4 – 1 1/4 yds).

Infinity scarf: Duchesse,
width: 150 cm (59 ins)
length: 1.65 – 1.65 – 1.70 – 1.75 – 1.80 m
(1 7/8 – 1 7/8 – 1 7/8 – 2 – 2 yds).

Recommended fabrics: Softly draping dress fabrics. Silk fabrics with some body for the infinity scarf.

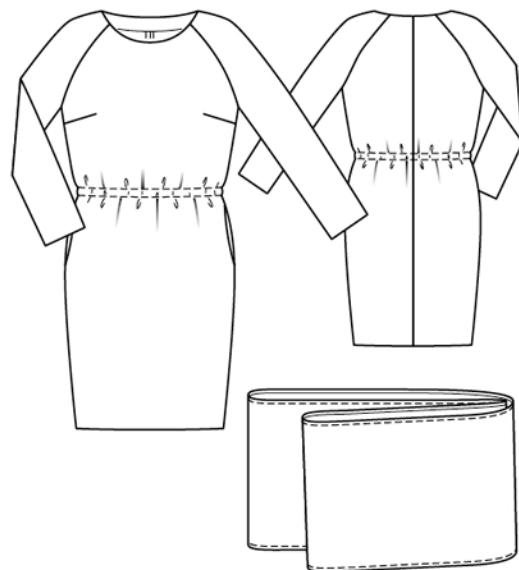
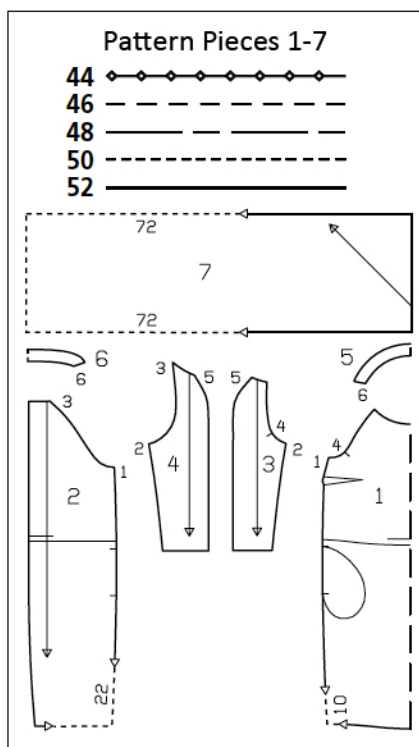
Preparations

Print the pattern out on letter or A4 sized paper. It is **very important** to not scale the document. Your pattern will print on multiple pages, which you will then tile together. Arrange the sheets on a large, hard and flat surface matching up the numbers and letters (i.e. 6A to 6A). Cut or fold one of the sides and match the edge to it's corresponding side. Then, tape down in place so paper is secure.

Trace the pattern pieces from the pattern sheet following the lines and markings for style 133 and your size. Trace pocket piece from piece 1 as separate pattern piece – the same for all sizes.

burda style magazine patterns do not have seam allowance included.

Seam and hem allowance to be added:
Seams and edges 1.5 cm (5/8 in), hem 4 cm (1 5/8 ins), sleeve hems 4 cm (1 5/8 ins) (flare sleeve hem allowance at lower sleeve seam).



Cutting Out

Dress

Georgette:

- 1 front, on a fold 1x
- pocket piece 4x
- 2 back 2x
- 3 front sleeve 2x
- 4 back sleeve 2x
- 5 front neck facing, on a fold 1x
- 6 back neck facing, on a fold 1x

Draft the following piece NOT included in the pattern:

- a) facing strip for waist casing, 118 – 122 – 128 – 134 – 140 cm (46 1/2 – 48 – 50 1/2 – 52 3/4 – 55 1/4 ins) long, 4 cm (1 5/8 ins) wide (incl. allowances).
- Interfacing: See shaded area on pattern layout.

Infinity scarf

Duchesse:

- 7 infinity scarf 2x

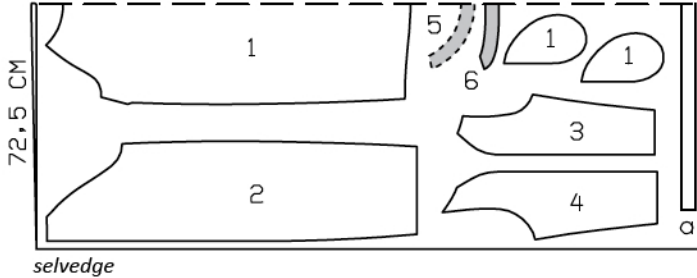
Cutting layouts on next page.

Dress

Georgette, 145 cm wide

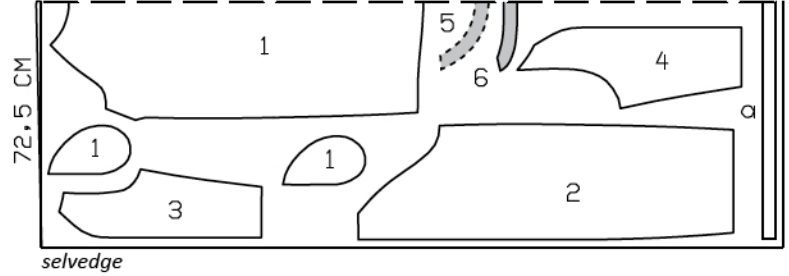
Sizes 44 – 50

fabric fold



Size 52

fabric fold



Right side faces in on a double layer of fabric; right side faces up on a single layer.

Sewing

Dress

Stitch bust darts and press down. Stitch centre back seam and side seams. On side seams, do not stitch across pocket openings. Press seam allowances open.

In-seam pockets: Pin pocket pieces to seam allowances of pocket opening edges, right sides facing, and stitch in place directly along marked seam lines. Press pocket pieces forward and stitch together.

Stitch lower sleeve seams.

Stitch sleeves to front and back (seam numbers 3 and 4). Trim allowances of sleeve attachment seams to 7 mm (1/4 in) wide and neaten edges together. Press allowances toward sleeves, from neck edge to beginning of underarm curve.

Stitch shoulder seams (seam number 5) and upper sleeve seams as continuous seams. Press seams open.

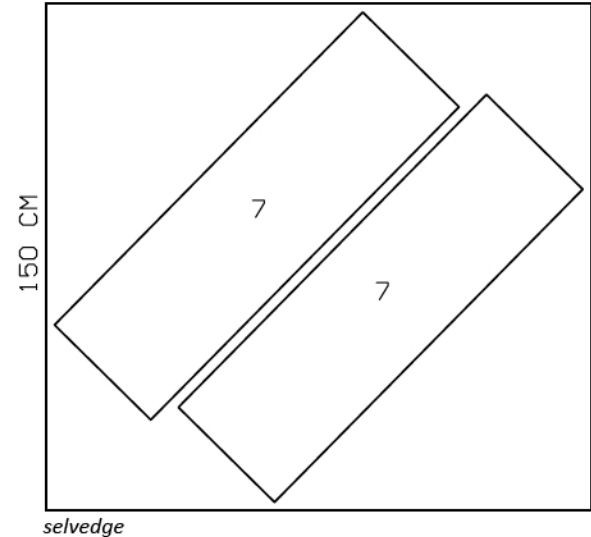
Neck edge: Stitch shoulder seams of neck facing. Press seam allowances open. Pin facing to neck edge, right sides together. Stitch along neck edge. Trim seam allowances. Turn facing to inside and press edge. Sew inside facing edge to seams.

Infinity scarf

Duchesse, 150 cm wide

Sizes 44 – 52

selvage



Neaten long edges of facing strip for casing. Pin facing strip to inside of dress, over marked casing lines, and turn ends under. Baste facing strip in place. Stitch from outer side of dress as marked. Insert elastic in casing. Sew ends of elastic together to a circumference of 82 – 86 – 92 – 98 – 104 cm (32 1/2 – 34 – 36 1/4 – 38 3/4 – 41 ins).

Press hem allowances on dress and sleeves to wrong side and sew in place by hand.

Infinity scarf

Lay both pieces together, right sides facing. Stitch narrow edges together. Press seam allowances to one side. Trim lower allowance to 5 mm (3/16 in) wide. Turn edge of upper allowance under and baste. Stitch from right side, 7 mm (1/4 in) from seam. Press allowances on long edges to wrong side, turn in, and stitch.

Additional Information:

Burda patterns do not include seam and hem allowances. We recommend adding 1-2 cm (3/8 - 3/4 inch) for seams and 2-5 cm (3/4 - 2 inch/es) for hems. Refer to your specific pattern instructions for exact measurements.

The fabric requirements are based on the fabric used for the original designs. These amounts will change if you use fabric of a different width. The pattern of the fabric determines whether all the pieces must be cut in the same direction or whether some can be reversed to save fabric.

The cutting layout printed with the instructions shows the best way to place the pattern pieces on our original fabric. Fold the fabric double with the right side facing in. The fabric then has a fold edge and a selvedge edge. When cutting from a single fabric layer, the right side should face up.

Pattern pieces which are shown in the cutting layout with broken outlines should be pinned to the fabric with their printed side facing down.

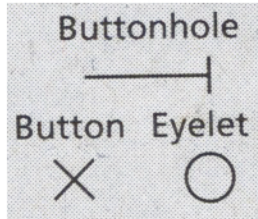
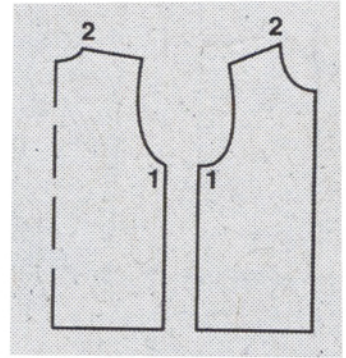
Grey shaded areas in the cutting layout indicate which pieces are to be interfaced.

Transfer the pattern piece lines to the wrong side of your fabric with burda dressmaker's carbon paper. Hand-baste along lines (e.g. for pockets or centre front) to make them visible on the right side of the fabric.

Key Symbols:

Seam numbers

show where pattern pieces must be sewn together. Match pieces with the same numbers.

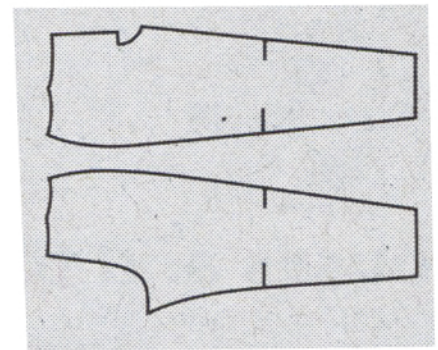


Seam marks

on long seams. Match the small symbols to one another.



Presser foot is the symbol for seam and top-stitching lines.



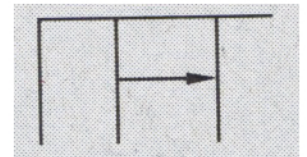
Scissors

indicate edges to be cut without seam allowances and also slash lines, e.g. pocket openings.



Pleat symbol

Fold pleat in direction of arrow.



Placket/slit mark

Indicates beginning/ end of placket/slit.



Gather
Ease
Stretch

