

### 104 Dress

and corsage

**Burda sizes 36, 38, 40, 42, 44**

Length from waist 56 cm (22 1/4 ins)

### Materials

Organdy,

width: 140 cm (55 ins)

length: 2.20 – 2.20 – 2.20 – 2.25 – 2.25 m

(2 1/2 – 2 1/2 – 2 1/2 – 2 5/8 – 2 5/8 yds).

Stretch crêpe satin, for lining, without sleeves

width: 150 cm (59 ins)

length: 1.10 – 1.15 – 1.15 – 1.20 – 1.20 m

(1 1/4 – 1 3/8 – 1 3/8 – 1 3/8 – 1 3/8 yds)

Organza (corsage),

width: 140 cm (55 ins)

length: 0.60 m (3/4 yd) for all sizes.

Regular and stiff interfacing.

1 invisible zip, 60 cm (24 ins) long.

2 small buttons.

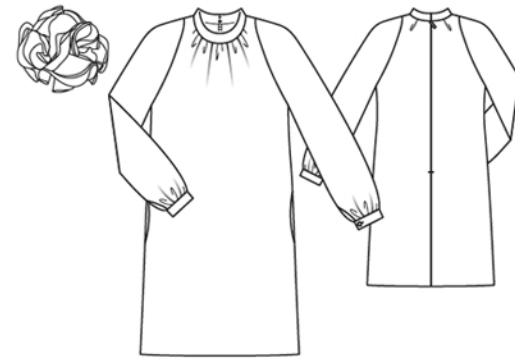
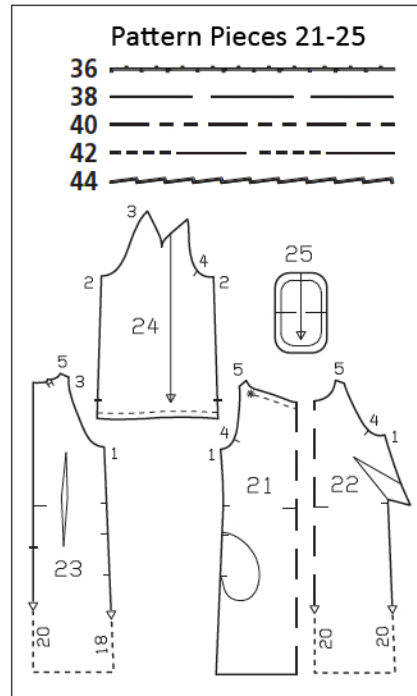
2 small hook-and-eye fasteners and 1 brooch pin.

Recommended fabrics: Lightweight dress fabrics with some body.

### Preparations

Print the pattern out on letter or A4 sized paper. It is **very important** to not scale the document. Your pattern will print on multiple pages, which you will then tile together. Arrange the sheets on a large, hard and flat surface matching up the numbers and letters (i.e. 6A to 6A). Cut or fold one of the sides and match the edge to its corresponding side. Then, tape down in place so paper is secure.

Trace the pattern pieces from the pattern sheet following the lines and markings for style 104 and your size. Trace pocket piece from piece 21 as a separate pattern piece – it is the same for all sizes. Trace the smaller petal from piece 25 as a separate pattern piece. The pleat arrow on piece 23 is marked for size 36. For the other sizes, remark the arrow according to the size lines.



**burda style magazine patterns do not have seam allowance included.**

Seam and hem allowance to be added: Seams and edges 1.5 cm (5/8 in), hem 4 cm (1 5/8 ins), lining pieces 1.5 cm (5/8 in).

### Cutting Out

Organdy:

21 front, on a fold	1x	24 sleeve	2x
pocket piece	2x	25 large petal	4x
23 back	2x	small petal	3x

Draft the following pieces NOT included in the pattern:

a) standing collar, cut on the bias, 39 – 40 – 41 – 42 – 43 cm (15 1/2 – 15 3/4 – 16 1/4 – 16 1/2 – 17 ins) long, 5 cm wide (2 ins), finished width 2.5 cm (1 in),

b) 2 sleeve bands with 2 cm (3/4 in) underlap, 21 – 21.5 – 22 – 22.5 – 23 cm (8 3/8 – 8 1/2 – 8 3/4 – 9 – 9 1/8 ins) long, 5 cm (2 ins) wide, finished width 2.5 cm (1 in).

Organza:

25 large petal	8x
small petal	6x

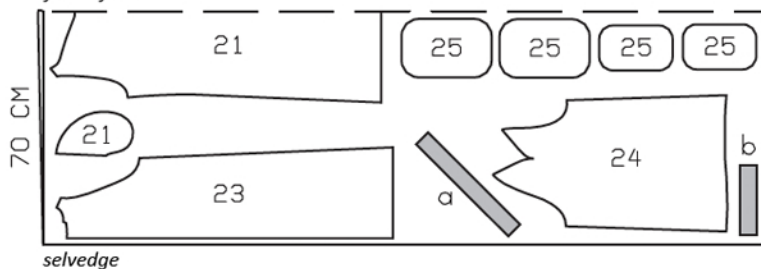
Lining:

21 pocket piece	2x
22 front, on a fold	1x
23 back	2x

Interfacing: See shaded area on pattern layout. Also interface collar with stiffer interfacing, cut this interfacing half the width and without allowances.

Organdy, 140 cm wide

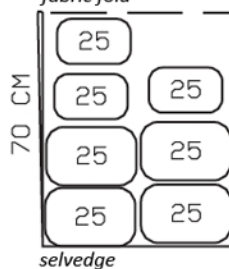
*fabric fold*



Cut from a double layer of fabric, right side facing in.

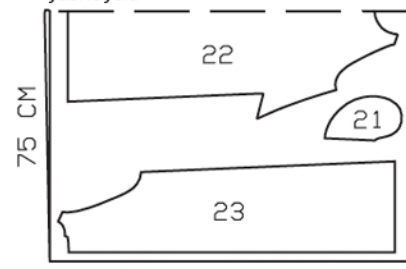
Organza, 140 cm wide

*fabric fold*



Crêpe satin (lining), 150 cm wide

*fabric fold*



## Sewing

### Dress

Stitch side seams, not stitching across pocket openings. Press seam allowances open.

Inseam pockets: Pin pocket pieces to seam allowances of pocket opening edges, right sides together – pocket lining pieces in front and pocket pieces of main fabric in back. Stitch pocket pieces of main fabric in place, directly along marked seam line. Stitch pocket lining pieces to seam allowances, 7 mm (1/4 in) from seam line. Press pocket pieces forward, trim even and stitch together.

Sew invisible zip to back slit edges, see the “Helpful Hint” on next page. Stitch centre back seam, up to zip.

Gather front neck edge between asterisks to 16 cm (6 3/8 ins). Fold pleats in back in direction of arrows and baste. Stitch darts in lining front. Press darts down. Stitch darts in lining back and press darts toward centre back. Stitch centre back seam below slit mark and stitch side seams. Press seam allowances open. Fold pleats in neck edge in direction of arrows and baste in place.

Pull lining into dress, with wrong sides facing. Turn lining edges under and sew to zip tapes, neck edge, and armhole edges.

Stitch sleeve seams, leaving vents open. Press seam allowances open, and press vent edges. Turn edges of vent allowances under and stitch in place.

Gather lower sleeve edges to match sleeve bands. Stitch sleeve bands to lower sleeve edges, leaving underlap extending at back vent edges. Press allowances of attachment seams and of other long sleeve band edges onto sleeve bands. Fold sleeve bands lengthwise, right side facing in, and stitch across ends. Turn right side out. Baste inside edges in place. Baste upper underlap edges together. Work from right side of sleeve to topstitch sleeve band close to attachment seam and upper underlap edge. Work one buttonhole in front end of each sleeve band. Stitch sleeves to armhole edges. Press allowances toward sleeves, from upper edge to beginning of underarm curve. Stitch shoulder seams and sleeve darts as continuous seams. Trim allowances of shoulder seam and darts to approx. 1 cm (3/8 in) wide, neaten and press onto back

Standing collar: Stitch collar to neck edge. Turn collar up and press allowances of attachment seam toward collar. Fold collar in half lengthwise, right side facing in. Stitch across ends. Turn collar right side out and press. Turn inside collar edge under and sew to attachment seam. Fasten collar with hooks and eyes.

Press hem allowance to inside. Sew in place by hand. Hem lining – it should be approx. 2 cm (3/4 in) shorter than the dress.

### Corsage

Lay one petal of organza on an organdy petal of the same size. Stitch petals together from one long edge to centre, as marked on pattern. Turn loose half of organza petal back. Lay a second organza petal of the same size on free half of organdy petal. Then stitch loose halves of organza petals together, along stitching line. Fold stitched-together petals loosely and place together to form a flower, with larger petals on bottom. Sew fabric layers together at centre. Sew brooch pin to back of corsage.



These special zippers come in various lengths. The zipper should be at least 2 cm (3/4 in) longer than the slit. It is sewn in place before the seam below the slit is stitched. A special presser foot is required to sew the zipper in place.

### **Sewing the zipper in place:**

Open the zipper and push the coil back with your thumbnail to reveal the seam marking between the tape and the coil. Place the open zipper right side down on the right fabric side of one slit edge.

In order to stitch the zipper in place exactly along the marked seam line, you must first calculate the distance between the tape edge and the fabric edge as follows: width of seam allowance minus 1 cm (3/8 in) tape width = distance from edge of fabric. This will yield a value of 5 mm (3/16 in) if the width of the seam allowance is 1.5 cm (5/8 in).

Pin the top end of the zipper tape in place, the calculated distance from the edge of the fabric. The bottom end of the zipper will extend past the marked end of the slit. Place the presser foot on the zipper so that the coil is in the notch to the right of the needle (1). Stitch zipper in place, from the top to the marked end of the slit. Close zipper.

Place the other zipper tape face down on the opposite slit edge and pin in place at the top. Open zipper again. Place the presser foot on the top end of the zipper so that the coil is in the notch to the left of the needle (2). Sew the zipper in place, from the top to the end of the slit. Close zipper.

Now stitch the seam below the zipper, from bottom to top. Turn the loose lower end of the zipper out of the way, over the seam allowance. Stitch as close as possible to the last stitches of the zipper seams. Trim away excess zipper and bind the end with a scrap of fabric.

## Additional Information:

**Burda patterns do not include seam and hem allowances.** We recommend adding 1-2 cm (3/8 - 3/4 inch) for seams and 2-5 cm (3/4 - 2 inch/es) for hems. Refer to your specific pattern instructions for exact measurements.

The fabric requirements are based on the fabric used for the original designs. These amounts will change if you use fabric of a different width. The pattern of the fabric determines whether all the pieces must be cut in the same direction or whether some can be reversed to save fabric.

The cutting layout printed with the instructions shows the best way to place the pattern pieces on our original fabric. Fold the fabric double with the right side facing in. The fabric then has a fold edge and a selvedge edge. When cutting from a single fabric layer, the right side should face up.

Pattern pieces which are shown in the cutting layout with broken outlines should be pinned to the fabric with their printed side facing down.

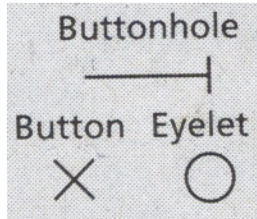
Grey shaded areas in the cutting layout indicate which pieces are to be interfaced.

Transfer the pattern piece lines to the wrong side of your fabric with burda dressmaker's carbon paper. Hand-baste along lines (e.g. for pockets or centre front) to make them visible on the right side of the fabric.

## Key Symbols:

### Seam numbers

show where pattern pieces must be sewn together. Match pieces with the same numbers.



### Seam marks

on long seams. Match the small symbols to one another.



**Presser foot** is the symbol for seam and top-stitching lines.



### Scissors

indicate edges to be cut without seam allowances and also slash lines, e. g. pocket openings.



### Pleat symbol

Fold pleat in direction of arrow.



### Placket/slit mark

Indicates beginning/ end of placket/slit.



**Gather**  
**Ease**  
**Stretch**

