

### 112 Dress

Burda sizes 36, 38, 40, 42, 44

Length from waist 67 cm (26 1/2 ins)

### Materials

Fine knit fabric with elastane,  
width: 140 cm (55 ins)

length: 2.10 – 2.10 – 2.10 – 2.15 – 2.15 m  
(2 3/8 – 2 3/8 – 2 3/8 – 2 1/2 – 2 1/2 yds).

Interfacing.

Vilene Bias tape/ stay tape.

1 invisible zip, 60 cm (24 ins) long.

A twin sewing machine needle.

Recommended fabrics: Fine knits or jersey. Use 4-way stretch knits only.

### Preparations

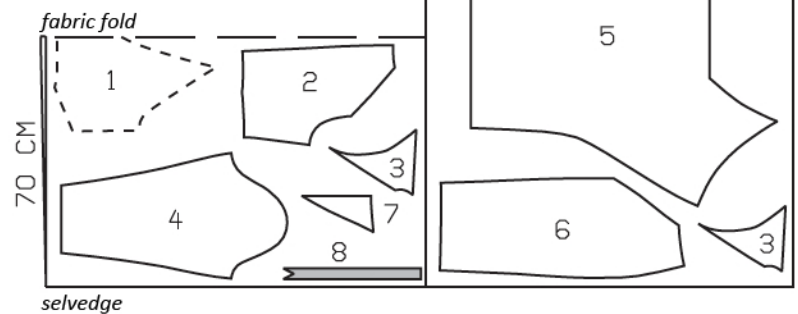
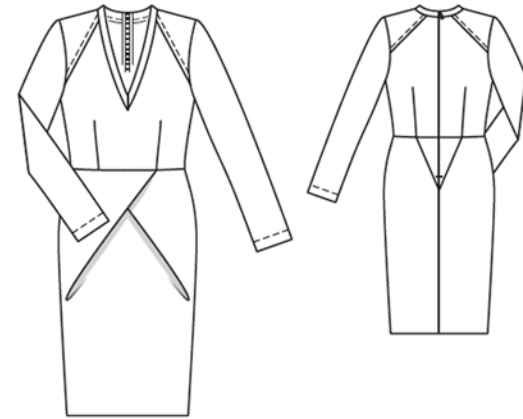
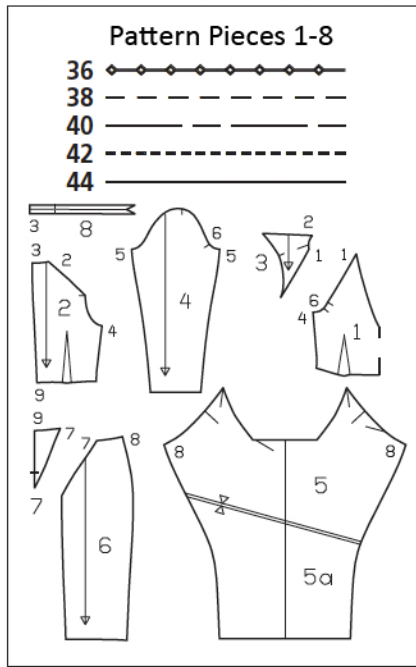
Print the pattern out on letter or A4 sized paper. It is **very important** to not scale the document. Your pattern will print on multiple pages, which you will then tile together. Arrange the sheets on a large, hard and flat surface matching up the numbers and letters (i.e. 6A to 6A). Cut or fold one of the sides and match the edge to its corresponding side. Then, tape down in place so paper is secure.

Trace the pattern pieces from the pattern sheet following the lines and markings for style 112 and your size.

**burda style magazine patterns do not have seam allowance included.**

Seam and hem allowance to be added:

Seams and edges 1.5 cm (5/8 in), hem 4 cm (1 5/8 ins), sleeve hems 4 cm (1 5/8 ins) (flare sleeve hem allowance).



Fold the fabric as shown in the pattern layout. Right side faces in on a double layer of fabric; right side faces up on a single layer. Pieces shown with a broken outline must be laid on the fabric, with their printed side down.

### Cutting Out

- 1 front, on a fold 1x
- 2 back 2x
- 3 shoulder yoke 4x
- 4 sleeve 2x
- 5 front skirt panel 1x
- 6 back skirt panel 2x
- 7 back skirt yoke 2x
- 8 neck band 2x

**Interfacing:** See shaded area on pattern layout. Iron Vilene Bias Tape/ stay tape to neck edges (front, yokes, back pieces), to yoke attachment edges and lower edge of front and back pieces, to slanted seam edge of skirt yokes, and also to back edges of back pieces and skirt yokes.

## Sewing

**Note:** On stretch fabrics, stitch seams with a special stretch stitch or with a narrow zigzag stitch. Stitch hems with a twin machine needle to keep them elastic.

Stitch darts in front and back pieces. Press darts toward centres.

Baste pairs of shoulder yoke pieces together, wrong sides facing. Treat these pieces as one layer of fabric from now on. Stitch shoulder yokes to front and back pieces. Press seam allowances onto yokes. Topstitch yokes 1 cm (3/8 in) from attachment seams.

Stitch side seams of bodice. Press seam allowances open.

Fold front skirt panel on fold line I, with wrong side facing in. Fold left pleat so that fold I meets placement line I. Baste pleat to upper skirt edge. Baste right pleat in same manner, fold II to placement line II. Stitch back yokes to back skirt panels. Press seam allowances onto yokes. Stitch side seams of skirt.

Stitch skirt to bodice. Press seam allowances up.

**Neck band:** Lay both band pieces together, right sides facing, and stitch along slanted edges in front. Trim seam allowances and clip into point of neck edge. Lay band pieces apart and first press centre seam allowances on one half of band open, then on the other half. Fold neck band on fold line, wrong side facing in, and press. Now first stitch long edges of band together to one half of neck edge. Clip seam allowance of front into point of neck edge. Stitch band to second half of neck edge. Press band up and press seam allowances onto dress.

Press hem allowance to inside and sew in place by hand.

**Invisible zip and centre back seam:** Sew invisible zip to back slit edges, beginning at upper band edge, see the "Helpful Hint" on next page. On upper edge, turn extending zip tapes under and sew to band edge, together with seam allowances, on inside. Stitch centre back seam from lower edge to zip. Then hem the dress.

Stitch sleeve seams. Press sleeve hem allowances to inside. Work from outer side, with the twin needle, to stitch hem 3 cm (1 1/4 ins) from edge.

Set in sleeves.



These special zippers come in various lengths. The zipper should be at least 2 cm (3/4 in) longer than the slit. It is sewn in place before the seam below the slit is stitched. A special presser foot is required to sew the zipper in place.

### **Sewing the zipper in place:**

Open the zipper and push the coil back with your thumbnail to reveal the seam marking between the tape and the coil. Place the open zipper right side down on the right fabric side of one slit edge.

In order to stitch the zipper in place exactly along the marked seam line, you must first calculate the distance between the tape edge and the fabric edge as follows: width of seam allowance minus 1 cm (3/8 in) tape width = distance from edge of fabric. This will yield a value of 5 mm (3/16 in) if the width of the seam allowance is 1.5 cm (5/8 in).

Pin the top end of the zipper tape in place, the calculated distance from the edge of the fabric. The bottom end of the zipper will extend past the marked end of the slit. Place the presser foot on the zipper so that the coil is in the notch to the right of the needle (1). Stitch zipper in place, from the top to the marked end of the slit. Close zipper.

Place the other zipper tape face down on the opposite slit edge and pin in place at the top. Open zipper again. Place the presser foot on the top end of the zipper so that the coil is in the notch to the left of the needle (2). Sew the zipper in place, from the top to the end of the slit. Close zipper.

Now stitch the seam below the zipper, from bottom to top. Turn the loose lower end of the zipper out of the way, over the seam allowance. Stitch as close as possible to the last stitches of the zipper seams. Trim away excess zipper and bind the end with a scrap of fabric.

## Additional Information:

**Burda patterns do not include seam and hem allowances.** We recommend adding 1-2 cm (3/8 - 3/4 inch) for seams and 2-5 cm (3/4 - 2 inch/es) for hems. Refer to your specific pattern instructions for exact measurements.

The fabric requirements are based on the fabric used for the original designs. These amounts will change if you use fabric of a different width. The pattern of the fabric determines whether all the pieces must be cut in the same direction or whether some can be reversed to save fabric.

The cutting layout printed with the instructions shows the best way to place the pattern pieces on our original fabric. Fold the fabric double with the right side facing in. The fabric then has a fold edge and a selvedge edge. When cutting from a single fabric layer, the right side should face up.

Pattern pieces which are shown in the cutting layout with broken outlines should be pinned to the fabric with their printed side facing down.

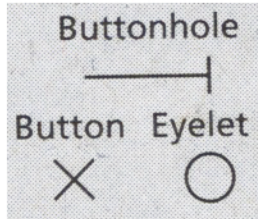
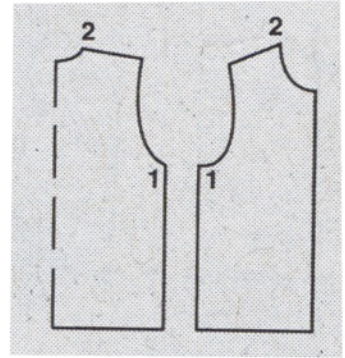
Grey shaded areas in the cutting layout indicate which pieces are to be interfaced.

Transfer the pattern piece lines to the wrong side of your fabric with burda dressmaker's carbon paper. Hand-baste along lines (e.g. for pockets or centre front) to make them visible on the right side of the fabric.

## Key Symbols:

### Seam numbers

show where pattern pieces must be sewn together. Match pieces with the same numbers.



### Seam marks

on long seams. Match the small symbols to one another.



**Presser foot** is the symbol for seam and top-stitching lines.



### Scissors

indicate edges to be cut without seam allowances and also slash lines, e.g. pocket openings.



### Pleat symbol

Fold pleat in direction of arrow.



### Placket/slit mark

Indicates beginning/end of placket/slit.



**Gather**  
**Ease**  
**Stretch**

