

148 Sleeping Bag

Closed, approx. 50 cm (20 ins) long,
40 cm (15 3/4 ins) wide

Materials

Cotton fabrics with two different prints, for the
inside and outside
width: 110 cm (44 ins)
length: each 0.80 m (7/8 yd).

Batting interfacing, 150 cm (59 ins) wide and 0.80
m (7/8 yd) long.

Braid, 2 cm (3/4 in) wide and 0.60 m (3/4 yd) long.

Cotton bias tape, pre-folded, 2 cm (3/4 in) wide
and 1.60 m (1 3/4 yds) long.

3 large buttons.

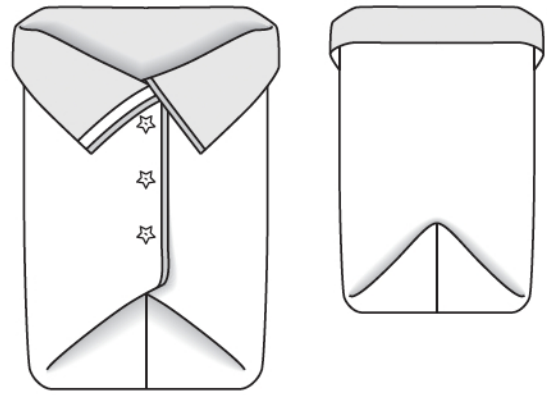
3 large sew-on snap fasteners.

Preparations

Draft and cut the following pieces:

Sleeping bag, outside and inside, each 80 cm (31
1/2 ins) long, 85 cm (33 1/2 ins) wide (incl. allow-
ances).

Baste an equal sized piece of batting to wrong
side of inside fabric piece.



Sewing

Cut braid into two equal pieces. On inside fabric piece, stitch braid 1 cm (3/8 in) from each 80 cm (31 1/2 in) long edge, beginning at upper edge of fabric piece and turning lower end of trim under.

Lay inside and outside pieces together, right sides facing. At the top, stitch the 85 cm (33 1/2 in) long edges together. Trim seam allowance of batting close to seam. Lay inside and outside flat apart and press seam open. Fold the remaining 85 cm (33 1/2 in) long edges each along the centre, right side facing in, and pin. Then lay pinned together edges together and stitch. Trim seam allowance of batting close to seam. On fold edge, trim end of seam allowances at an angle. Pull inside piece out until inside and outside layers lie together, wrong sides facing.

Baste open edges of inside and outside together and bind with bias tape as follows: Unfold one long edge of the pre-folded bias tape and stitch to inside edge, stitching 1 cm (3/8 in) from edge, along the fold. Lay bias tape toward edge and press. Turn ends under. Fold bias tape over edge, to outside, and edgestitch in place.

Unfold sleeping bag to form a point at the bottom. Turn side edges in toward centre and overlap them by 6 cm (2 3/8 ins). For the fastening, sew on 3 snaps, spaced as follows: 3 cm (1 1/4 ins) from front edge, 22 cm (8 3/4 ins) from upper edge, and spaced 8 cm (3 1/4 ins) apart. Sew buttons over snaps, as decoration. Fold pointed end of sleeping bag toward back. Fold upper edge down, in back approx. 5 cm (2 ins) wide.