

117 Dress

Burda sizes 36, 38, 40, 42

Length from waist 82 cm (32 1/2 ins)

Materials

Note: For this style, a double layer of the delicate original fabric was used. A single fabric layer is used for the sleeves.

Linen lawn with an embroidered border and scallops along one edge,
width: 138 cm (55 ins)
length: 5.70 m (6 1/4 yds) for all sizes.

Batiste, for skirt lining
width: 140 cm (55 ins)
length: 0.60 m (3/4 yd).

1 invisible zip, 22 cm (9 ins) long.

10 small fabric-covered buttons.

4 small sew-on snap fasteners.

Recommended fabrics: Fine fabrics with an embroidered border along one edge.

Preparations

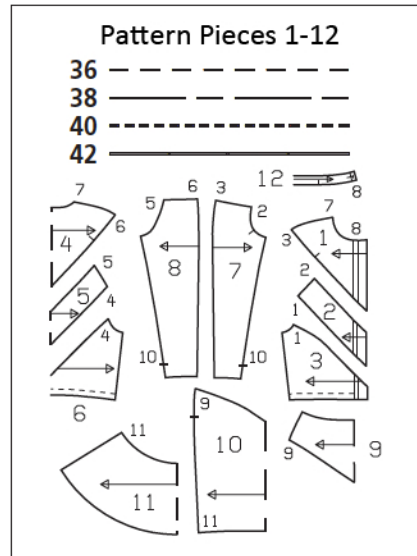
Print the pattern out on letter or A4 sized paper. It is **very important** to not scale the document. Your pattern will print on multiple pages, which you will then tile together. Arrange the sheets on a large, hard and flat surface matching up the numbers and letters (i.e. 6A to 6A). Cut or fold one of the sides and match the edge to its corresponding side. Then, tape down in place so paper is secure.

Trace the pattern pieces from the pattern sheet following the lines and markings for style 117 and your size.

burda style magazine patterns do not have seam allowance included.

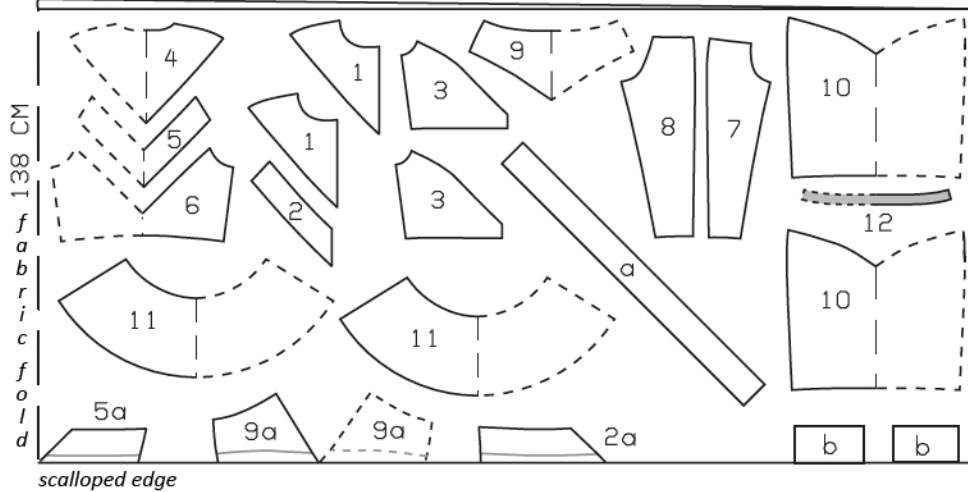
Seam and hem allowance to be added:

Seams and edges 1.5 cm (5/8 in), on piece 6 at side seam 3 cm (1 1/4 ins), sleeve hems 2 cm (3/4 in).



Linen lawn, 138 cm wide

selvedge

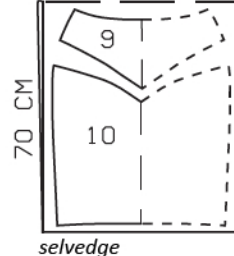


scalloped edge

Batiste (lining),

140 cm wide

fabric fold



selvedge

Fold fabric as shown in pattern layout, right side facing in. Pin scalloped edges together exactly. Centre front and back must lie centred exactly over a scallop.

Cutting Out

Linen lawn:

- 1 upper front 4x
- 2 centre front (inside) 2x
- 3 lower front 4x
- 4 upper back, on a fold 2x
- 5 centre back (inside), on a fold 1x
- 6 lower back, on a fold 2x
- 7 sleeve front 2x
- 8 sleeve back 2x
- 9 skirt yoke (inside), on a fold 2x
- 10 skirt panel, on a fold 4x
- 11 hem flounce, on a fold 4x
- 12 standing collar, on a fold 2x

Draft the following piece NOT included:

a) collar frill, cut on bias, 100 cm (39 1/2 ins) long, 9 cm (3 1/2 ins) wide, cut without allowances.

Cut from the border edge:

- 2 a front embroidered piece 2x
- 5 a back embroidered piece,
on a fold 1x
- 9 a skirt yoke (embroidered piece) 2x

b) 4 embroidered pieces (sleeve), 20 cm (8 ins) long, 11 cm (4 3/8 ins) wide (incl. allowances). Lay pattern pieces for the embroidered pieces on the fabric, with lower edges on the scalloped edge of the fabric. The scalloped edge forms the lower edge of the embroidered pieces for the sleeves.

Batiste (lining):

- 9 skirt yoke, on a fold 2x
- 10 skirt panel, on a fold 2x

Interfacing: See shaded area on pattern layout.

Sewing

Baste two upper and two lower front pieces, two upper and two lower back pieces, and two skirt panels each together, with wrong side facing right side. Treat these pieces as one layer of fabric from now on.

Stitch centre fronts to lower fronts. Press seam allowances onto centre pieces. Baste front embroidered pieces to centre fronts so that scalloped edge extends 1.5 cm (5/8 in) past section seam. Sew embroidered pieces in place, at level

of section seam, with small stitches by hand.

Stitch centre back to lower back, clipping seam allowance of lower back into corner. Press seam allowances onto centre piece. Fold back embroidered piece in half, right side facing in, and stitch centre seam, tapering seam at lower edge like a dart. Trim seam allowances, Neaten together and press to one side. Baste back embroidered piece to centre back as described for centre front and sew in place at level of section seam.

On upper sleeve edges, baste embroidered pieces in place so that they lie on garment piece, 9.5 cm (3 3/4 ins) wide. On sleeve attachment edges, make sure that scallops continue line of scallops on front and back. Trim extending fabric edge of embroidered pieces, back to sleeve edges. Sew embroidered pieces in place by hand, 1.5 cm (5/8 in) above scalloped edge.

Stitch sleeve fronts to armhole edges of centre and lower fronts. Stitch sleeve backs to armhole edges of centre and lower back (seam numbers 2 and 5). Turn seam allowances toward sleeves.

Beginning at seam number 3, stitch upper fronts to sleeve fronts and to centre fronts, as continuous seam. Beginning at seam number 6, stitch upper back to sleeve backs and to centre back as continuous seam, clipping seam allowance of centre back into corner. Press seam allowances toward centre pieces.

Stitch shoulder seams and upper sleeve seams as continuous seams. Neaten seam allowances together and press onto back. Stitch lower sleeve seams above vent mark and side seams as continuous seams. Leave left side seam open at bottom, 15 cm (6 ins) long, for snap fastening. Press seam allowances open.

Turn sleeve hem allowances to wrong side, turn edges under, and stitch 1 cm (3/8 in) from lower edge. At vent edges, allowances to wrong side, turn edges under and stitch, stitching horizontally across tops of vents. On fronts, press self-facings to inside and baste.

Standing collar: Lay collar pieces together, right sides facing. Stitch together along front and upper edges, beginning and ending in front, exactly at seam line on attachment edge. Trim seam allowances. Turn collar right side out and press. Stitch outer collar piece to neck edge of dress. Turn edge of inside collar piece under and sew to attachment seam.

On collar frill, slightly fray all edges. Gather frill along centre and stitch to collar, 1.5 cm (5/8 in) from attachment seam, on left collar end ending at centre front. Turn upper edge of frill down over attachment seam.

On right front, work 9 horizontal buttonholes along centre front: Work top buttonhole 2 cm (3/4 in) below collar attachment seam, then work 8 more buttonholes, spacing them 4 – 4 – 4.3 – 4.3 cm (1 5/8 – 1 5/8 – 1 3/4 – 1 3/4 ins) apart. Work buttonhole in right collar end as marked, unfolding frill to do so.

Sewing Continued...

Stitch skirt yokes to skirt panels, clipping seam allowances of skirt into corners. Press seam allowances onto yokes. Lay embroidered yokes in half, right side facing in, and stitch centre seam, at lower edge tapering like a dart. Trim seam allowances, neaten together, and press to one side. Baste embroidered yokes to skirt yokes so that scalloped edge extends 1.5 cm (5/8 in) past attachment seam. Hand sew embroidered yokes in place, with small stitches at level of attachment seam.

Sew invisible zip to left side edges of yoke and skirt, down to slit mark, see the “Helpful Hint” on next page. Stitch left side skirt seam from lower edge to zip opening. Stitch right side skirt seam.

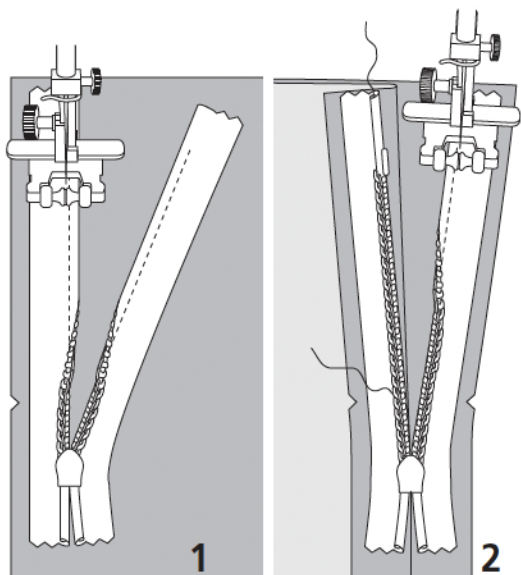
Lay right front on left front, with wrong side facing right side, and matching centre fronts. Baste lower edges together. Gather lower edge of dress bodice to match yoke. Stitch skirt to bodice – seam allowances of bodice extend at zip opening.

Stitch seams of lining. Leave slit open, 2 cm (3/4 in) longer than marked. Turn lining hem allowance to wrong side, turn edge under, and stitch in place.

Pull skirt lining into dress, with right side facing wrong side, and stitch to allowances of skirt attachment seam, stitching as far as possible at slit. Press allowances of skirt attachment seam up, approx. 5 cm (2 ins) long, at slit, then press down.

On left side front edge, press slit allowance to inside, turn half in, baste, then sew to skirt attachment seam. On left side back edge, press wide seam allowance for underlap forward, turn in to a width of 1 cm (3/8 in), and baste. At lower edge, sew extending underlap edge closed by hand. Above slit, trim wide seam allowance to 1.5 cm (5/8 in) wide. Fasten slit with small snaps. When sewing snaps in place, take even stitches and exit needle on right fabric side.

Lay pairs of flounce pieces together and stitch side seams. Trim seam allowances, neaten together, and press to one side. Finish lower flounce edges with closely spaced zigzag stitching. Lay flounce pieces together, with wrong side facing right side, and baste upper edges together. Stitch flounce to lower dress edge, not catching lining. Press seam allowances up.



These special zippers come in various lengths. The zipper should be at least 2 cm (3/4 in) longer than the slit. It is sewn in place before the seam below the slit is stitched. A special presser foot is required to sew the zipper in place.

Sewing the zipper in place:

Open the zipper and push the coil back with your thumbnail to reveal the seam marking between the tape and the coil. Place the open zipper right side down on the right fabric side of one slit edge.

In order to stitch the zipper in place exactly along the marked seam line, you must first calculate the distance between the tape edge and the fabric edge as follows: width of seam allowance minus 1 cm (3/8 in) tape width = distance from edge of fabric. This will yield a value of 5 mm (3/16 in) if the width of the seam allowance is 1.5 cm (5/8 in).

Pin the top end of the zipper tape in place, the calculated distance from the edge of the fabric. The bottom end of the zipper will extend past the marked end of the slit. Place the presser foot on the zipper so that the coil is in the notch to the right of the needle (1). Stitch zipper in place, from the top to the marked end of the slit. Close zipper.

Place the other zipper tape face down on the opposite slit edge and pin in place at the top. Open zipper again. Place the presser foot on the top end of the zipper so that the coil is in the notch to the left of the needle (2). Sew the zipper in place, from the top to the end of the slit. Close zipper.

Now stitch the seam below the zipper, from bottom to top. Turn the loose lower end of the zipper out of the way, over the seam allowance. Stitch as close as possible to the last stitches of the zipper seams. Trim away excess zipper and bind the end with a scrap of fabric.

Additional Information:

Burda patterns do not include seam and hem allowances. We recommend adding 1-2 cm (3/8 - 3/4 inch) for seams and 2-5 cm (3/4 - 2 inch/es) for hems. Refer to your specific pattern instructions for exact measurements.

The fabric requirements are based on the fabric used for the original designs. These amounts will change if you use fabric of a different width. The pattern of the fabric determines whether all the pieces must be cut in the same direction or whether some can be reversed to save fabric.

The cutting layout printed with the instructions shows the best way to place the pattern pieces on our original fabric. Fold the fabric double with the right side facing in. The fabric then has a fold edge and a selvedge edge. When cutting from a single fabric layer, the right side should face up.

Pattern pieces which are shown in the cutting layout with broken outlines should be pinned to the fabric with their printed side facing down.

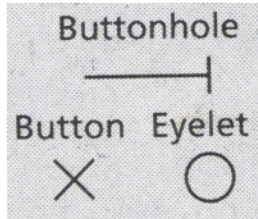
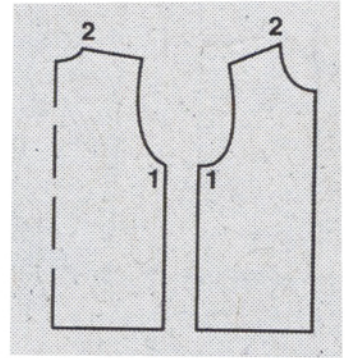
Grey shaded areas in the cutting layout indicate which pieces are to be interfaced.

Transfer the pattern piece lines to the wrong side of your fabric with burda dressmaker's carbon paper. Hand-baste along lines (e.g. for pockets or centre front) to make them visible on the right side of the fabric.

Key Symbols:

Seam numbers

show where pattern pieces must be sewn together. Match pieces with the same numbers.

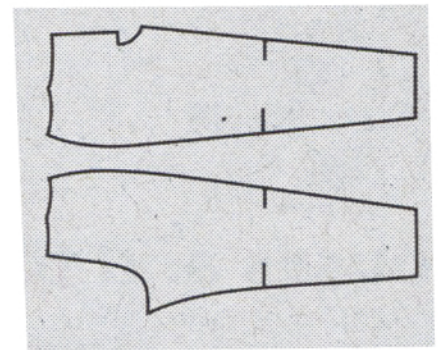


Seam marks

on long seams. Match the small symbols to one another.



Presser foot is the symbol for seam and top-stitching lines.



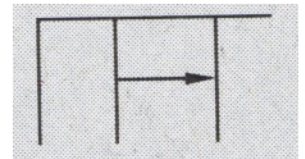
Scissors

indicate edges to be cut without seam allowances and also slash lines, e.g. pocket openings.



Pleat symbol

Fold pleat in direction of arrow.



Placket/slit mark

Indicates beginning/ end of placket/slit.



Gather
Ease
Stretch

