

128 Dress

Burda sizes 34, 36, 38, 40, 42

Length from elastic 58 cm (23 ins)
(elastic = waist)

Materials

Dress: print batiste,
width: 135 cm (53 ins)
length: 2.10 – 2.10 – 2.15 – 2.15 – 2.20 m
(2 3/8 – 2 3/8 – 2 1/2 – 2 1/2 – 2 1/2 yds).

Elastic thread.

Underdress: pongé,
width: 135 cm (53 ins) wide.

Fabric requirements and notions, see dress.

Recommended fabrics: Lightweight dress fabrics.

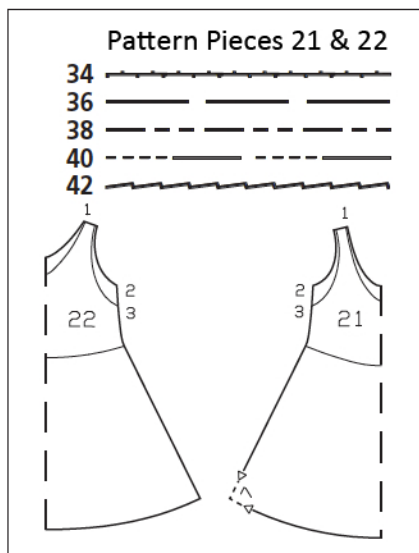
Preparations

Print the pattern out on letter or A4 sized paper. It is **very important** to not scale the document. Your pattern will print on multiple pages, which you will then tile together. Arrange the sheets on a large, hard and flat surface matching up the numbers and letters (i.e. 6A to 6A). Cut or fold one of the sides and match the edge to its corresponding side. Then, tape down in place so paper is secure.

Trace the pattern pieces from the pattern sheet following the lines and markings for style 128 and your size.

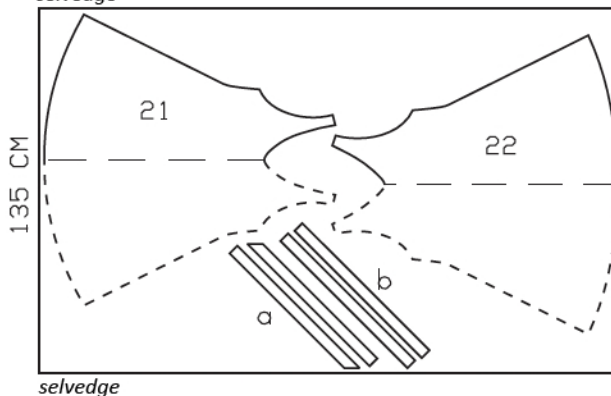
burda style magazine patterns do not have seam allowance included.

Seam and hem allowance to be added:
Seams, edges and hem 1.5 cm (5/8 in).



Dress
Batiste, 135cm wide

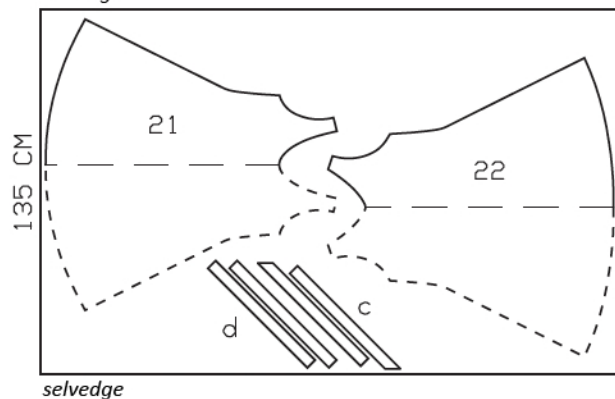
selvedge



Cut from a single layer of fabric, right side facing up.

Underdress
Pongé, 135cm wide

selvedge



Cutting Out

Dress:

21 front, on a fold 1x

22 back, on a fold 1x

Draft the following pieces NOT included in the pattern:

a) bias strip for neck edge, a total of 104 – 106 – 109 – 111 – 114 cm (41 – 41 3/4 – 43 – 43 3/4 – 45 ins) long, 4 cm (1 5/8 ins) wide (incl. allowances),

b) 2 bias strips for armhole edges, 62 – 63 – 64 – 65 – 67 cm (24 1/2 – 24 3/4 – 25 1/4 – 25 3/4 – 26 1/2 yds) long, 4 cm (1 5/8 ins) wide (incl. allowances).

Underdress:

21 front, on a fold 1x

22 back, on a fold 1x

c) bias strip for neck edge, a total of 86 – 88 – 91 – 93 – 96 cm (34 – 34 3/4 – 36 – 36 3/4 – 37 3/4 ins) long, 4 cm (1 5/8 ins) wide (incl. allowances),

d) 2 bias strips for armhole edges, 47 – 48 – 49 – 51 – 52 cm (18 1/2 – 19 – 19 1/4 – 20 1/4 – 20 1/2 ins) long, 4 cm (1 5/8 ins) wide (incl. allowances).

Sewing

Dress/Underdress

Stitch right shoulder seam. Neaten seam allowances together and press to one side.

Fold bias strip for neck edge lengthwise, right side facing out, and press. Pin folded bias strip to neck edge so that fold edge of strip lies on garment piece, 1 cm (3/8 in) past seam line. Stitch along marked neck edge. Trim seam allowances. Turn bias strip to inside and press edge.

Turn bias strip out flat again. Stitch left shoulder seam, stitching strip ends together. Turn bias strip to inside again. Topstitch 7 mm (1/4 in) from neck edge.



Face armhole edges with bias strips as for neck edge. Stitch side seams and stitch strip ends together as continuous seams. Turn bias strips to inside again. Topstitch armhole edges.

Elastic waist: On inside of front and back, mark shirring line with tailor's chalk. Lay elastic smoothly along chalk line and zigzag stitch over it. The stitch should be just wide enough to not catch the elastic, otherwise the elastic cannot be pulled to shirr the fabric. Pull elastic to 56 – 60 – 64 – 68 – 72 cm (22 1/4 – 23 3/4 – 25 1/4 – 26 3/4 – 28 1/2 ins). Knot elastic ends or hide ends.

Finish hem edge with zigzag stitching.

Additional Information:

Burda patterns do not include seam and hem allowances. We recommend adding 1-2 cm (3/8 - 3/4 inch) for seams and 2-5 cm (3/4 - 2 inch/es) for hems. Refer to your specific pattern instructions for exact measurements.

The fabric requirements are based on the fabric used for the original designs. These amounts will change if you use fabric of a different width. The pattern of the fabric determines whether all the pieces must be cut in the same direction or whether some can be reversed to save fabric.

The cutting layout printed with the instructions shows the best way to place the pattern pieces on our original fabric. Fold the fabric double with the right side facing in. The fabric then has a fold edge and a selvedge edge. When cutting from a single fabric layer, the right side should face up.

Pattern pieces which are shown in the cutting layout with broken outlines should be pinned to the fabric with their printed side facing down.

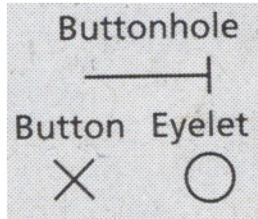
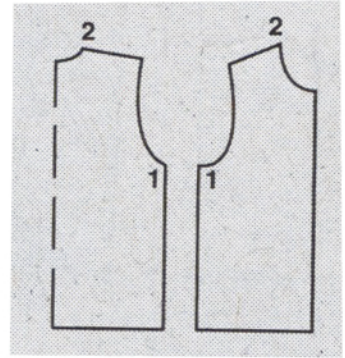
Grey shaded areas in the cutting layout indicate which pieces are to be interfaced.

Transfer the pattern piece lines to the wrong side of your fabric with burda dressmaker's carbon paper. Hand-baste along lines (e.g. for pockets or centre front) to make them visible on the right side of the fabric.

Key Symbols:

Seam numbers

show where pattern pieces must be sewn together. Match pieces with the same numbers.

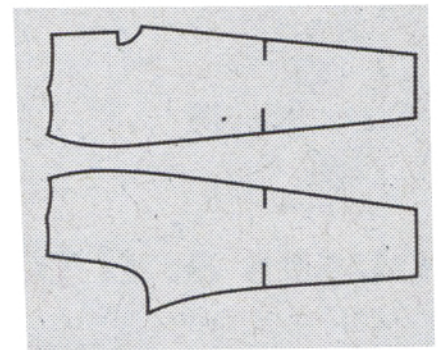


Seam marks

on long seams. Match the small symbols to one another.



Presser foot is the symbol for seam and top-stitching lines.



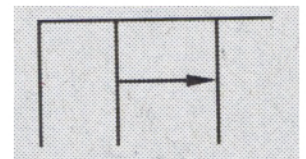
Scissors

indicate edges to be cut without seam allowances and also slash lines, e.g. pocket openings.



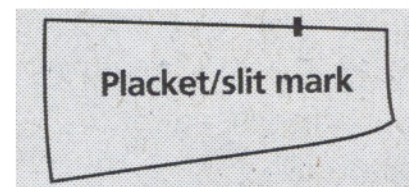
Pleat symbol

Fold pleat in direction of arrow.



Placket/slit mark

Indicates beginning/ end of placket/slit.



Gather
Ease
Stretch

