

120 Dress

Burda sizes 36, 38, 40, 42, 44

Length from waist 70 cm (28 ins)

Sleeves are extra long

Materials

Silk satin, with widthwise stretch, width: 135 cm (53 ins)

length: 2.30 – 2.30 – 2.45 – 2.70 – 2.75 m
(2 5/8 – 2 5/8 – 2 3/4 – 3 – 3 1/8 yds).

Interfacing.

Vilene Bias Tape/ stay tape.

1 invisible zip, 40 cm (16 ins) long.

Cotton tape, 1 cm (3/8 in) wide and 0.40 m (1/8 yd) long.

Crocheted collar with plastic gem stones incorporated in the crochet, approx. 140 cm (55 ins) long.

Approx. 22 sew-on gems in different shapes and sizes, 1 tube of bugle beads, 1 tube of seed beads, and 1 tube of sequins.

Recommended fabrics: Stretch dress fabrics. Use only fabrics with widthwise or two-way stretch.

Preparations

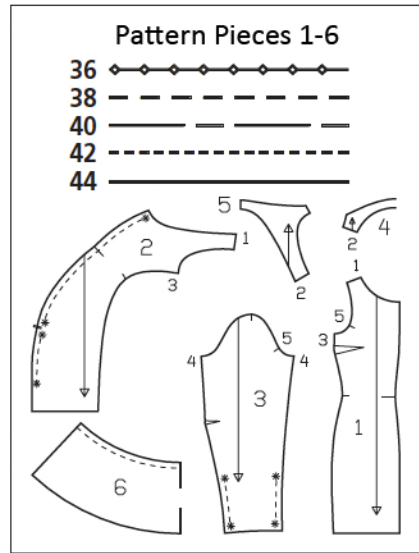
Print the pattern out on letter or A4 sized paper. It is **very important** to not scale the document. Your pattern will print on multiple pages, which you will then tile together. Arrange the sheets on a large, hard and flat surface matching up the numbers and letters (i.e. 6A to 6A). Cut or fold one of the sides and match the edge to its corresponding side. Then, tape down in place so paper is secure.

Trace the pattern pieces from the pattern sheet following the lines and markings for style 119 and your size.

burda style magazine patterns do not have seam allowance included.

Seam and hem allowance to be added:

Seams, edges, and hem 1.5 cm (5/8 in), sleeve hems 4 cm (1 5/8 ins).

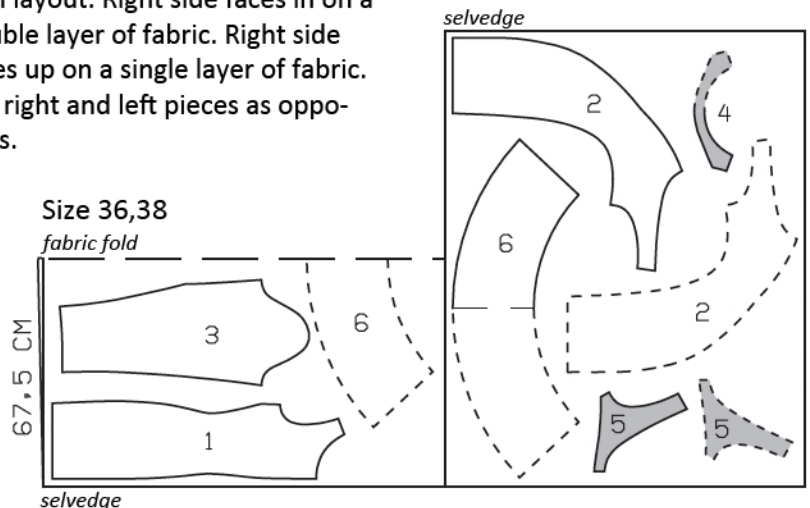


Cutting Out

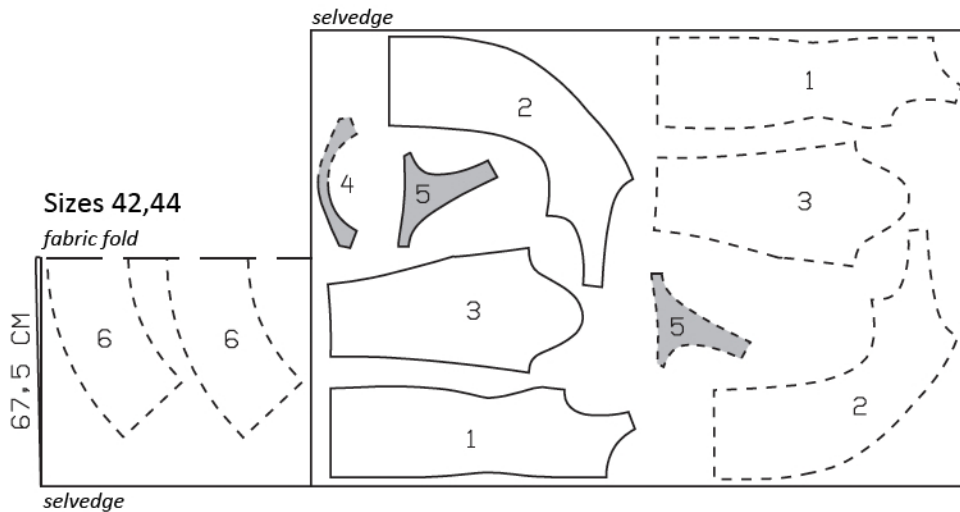
- 1 front 2x
- 2 back 2x
- 3 sleeve 2x
- 4 front neck facing, on a fold 1x
- 5 back neck facing 2x
- 6 hem flounce, on a fold 2x

Interfacing: See shaded area on pattern layout. Iron Vilene Bias Tape/ stay tape to wrong side of armhole edges.

Fold the fabric as shown in the pattern layout. Right side faces in on a double layer of fabric. Right side faces up on a single layer of fabric. Cut right and left pieces as opposites.



More cutting layouts on next page for other sizes



Sewing

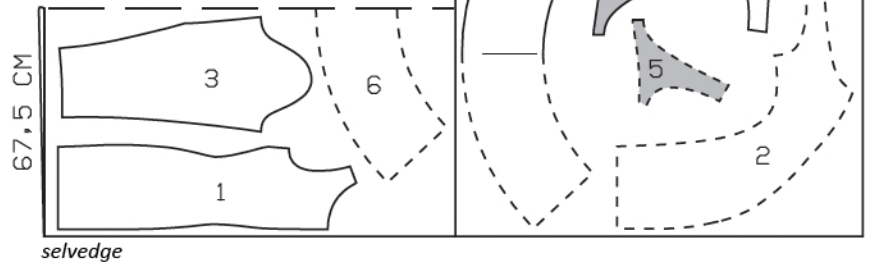
Stitch bust darts. Press darts down. Stitch centre front seam. Neaten seam allowances together and press to one side.

Gather back pieces: Neaten edges of allowance at centre back seam edges. Gather back edges between upper pair of asterisks to 38 cm (15 ins) and between lower pair of asterisks to 12 cm (4 3/4 ins). To gather, stitch a line of machine basting (longest stitch setting) to each side of marked seam line. Distribute gathering evenly.

Zip and centre back seam: Sew invisible zip to back slit edges, see the "Helpful Hint" on next page. Stitch centre back seam from lower edge to zip, catching cotton tape on wrong side of fabric, in area of gathers. Press seam allowances open over the edge of your ironing board, not pressing gathers flat.

Neck edge: Stitch shoulder seams of facing. Neaten lower facing edge. Pin facing to neck edge of dress, right sides together. At zip slit, turn facing back, approx. 5 mm (3/16 in) before slit edge, and pin to upper edge. Turn allowances on slit edges of dress to outside and pin to neck edge, over facing. Stitch along marked neck edge. Trim seam allowances and clip curves. Turn allowances at slit edges of dress to inside. Turn facing up and stitch to seam allowances, as far as possible, next to seam. Turn facing to inside and press neck edge. Sew facing to zip tapes and to centre front seam and baste to armhole edges and side seam edges of front.

Size 40



Stitch side seams.

Stitch side seams of hem flounce. Turn hem allowance to inside, turn edge under by half width, press and stitch. Gather flounce. Stitch flounce to lower dress edge. Press seam allowances onto dress.

Sew sleeves: On each sleeve, stitch dart. Press darts up. Gather sleeves between asterisks to 10 cm (4 ins). Stitch sleeve seams, catching backing strips along gathered sections. Turn sleeve hem allowances to inside, turn under by half width, and stitch.

Set in sleeves.

Sew crochet collar to neck edge, with tie bands extending equally long at back slit edges. Place the various "gems" on front, below the crocheted piece, and sew in place. Between the sewn-on "gems", sew sequins to front, each together with one seed bead, and sew bugle beads to front.



These special zippers come in various lengths. The zipper should be at least 2 cm (3/4 in) longer than the slit. It is sewn in place before the seam below the slit is stitched. A special presser foot is required to sew the zipper in place.

Sewing the zipper in place:

Open the zipper and push the coil back with your thumbnail to reveal the seam marking between the tape and the coil. Place the open zipper right side down on the right fabric side of one slit edge.

In order to stitch the zipper in place exactly along the marked seam line, you must first calculate the distance between the tape edge and the fabric edge as follows: width of seam allowance minus 1 cm (3/8 in) tape width = distance from edge of fabric. This will yield a value of 5 mm (3/16 in) if the width of the seam allowance is 1.5 cm (5/8 in).

Pin the top end of the zipper tape in place, the calculated distance from the edge of the fabric. The bottom end of the zipper will extend past the marked end of the slit. Place the presser foot on the zipper so that the coil is in the notch to the right of the needle (1). Stitch zipper in place, from the top to the marked end of the slit. Close zipper.

Place the other zipper tape face down on the opposite slit edge and pin in place at the top. Open zipper again. Place the presser foot on the top end of the zipper so that the coil is in the notch to the left of the needle (2). Sew the zipper in place, from the top to the end of the slit. Close zipper.

Now stitch the seam below the zipper, from bottom to top. Turn the loose lower end of the zipper out of the way, over the seam allowance. Stitch as close as possible to the last stitches of the zipper seams. Trim away excess zipper and bind the end with a scrap of fabric.

Additional Information:

Burda patterns do not include seam and hem allowances. We recommend adding 1-2 cm (3/8 - 3/4 inch) for seams and 2-5 cm (3/4 - 2 inch/es) for hems. Refer to your specific pattern instructions for exact measurements.

The fabric requirements are based on the fabric used for the original designs. These amounts will change if you use fabric of a different width. The pattern of the fabric determines whether all the pieces must be cut in the same direction or whether some can be reversed to save fabric.

The cutting layout printed with the instructions shows the best way to place the pattern pieces on our original fabric. Fold the fabric double with the right side facing in. The fabric then has a fold edge and a selvedge edge. When cutting from a single fabric layer, the right side should face up.

Pattern pieces which are shown in the cutting layout with broken outlines should be pinned to the fabric with their printed side facing down.

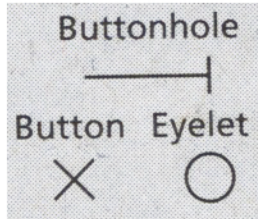
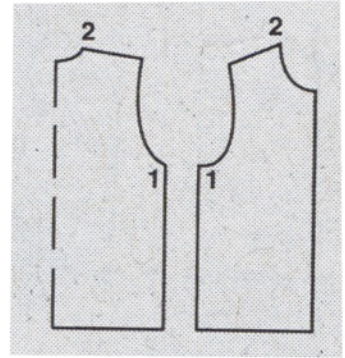
Grey shaded areas in the cutting layout indicate which pieces are to be interfaced.

Transfer the pattern piece lines to the wrong side of your fabric with burda dressmaker's carbon paper. Hand-baste along lines (e.g. for pockets or centre front) to make them visible on the right side of the fabric.

Key Symbols:

Seam numbers

show where pattern pieces must be sewn together. Match pieces with the same numbers.



Seam marks

on long seams. Match the small symbols to one another.



Presser foot is the symbol for seam and top-stitching lines.



Scissors

indicate edges to be cut without seam allowances and also slash lines, e.g. pocket openings.



Pleat symbol

Fold pleat in direction of arrow.



Placket/slit mark

Indicates beginning/ end of placket/slit.



Gather
Ease
Stretch

