

### 104AB Top

Burda sizes 34/36, 38/40, 42/44

Back length approx. 70 cm (28 ins)

### Materials

View A:

Crêpe,

width: 140 cm (55 ins)

length: 0.80 – 0.80 – 1.55m (7/8 – 7/8 – 1 3/4 yds).

Crêpe satin,

width: 140 cm (55 ins)

length: 0.10 m (1/8 yd).

Vilene Bias Tape/ stay tape.

Top B:

Chiffon,

width: 140 cm (55 ins)

length: 0.85 – 0.85 – 1.55 m (1 – 1 – 1 3/4 yds).

Vilene Bias Tape/ stay tape.

Recommended fabrics: Lightweight, softly draping fabrics.

### Preparations

Follow the diagram to make a full-sized pattern piece for the front and back (a).

Add seam and hem allowances:

Seams, edges and hem 1.5 cm (5/8 in).

### Cutting Out

Top A

Crêpe:

a) front from diagram 1x, on a fold,

a) back from diagram 1x, on a fold.

Crêpe satin:

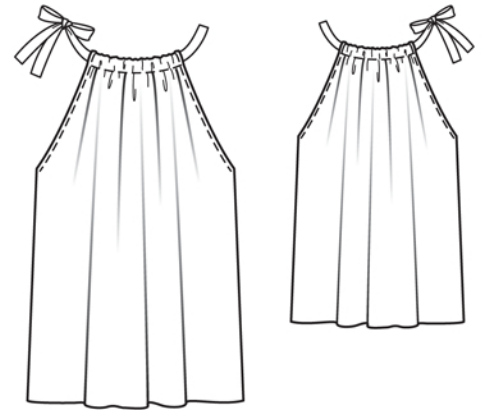
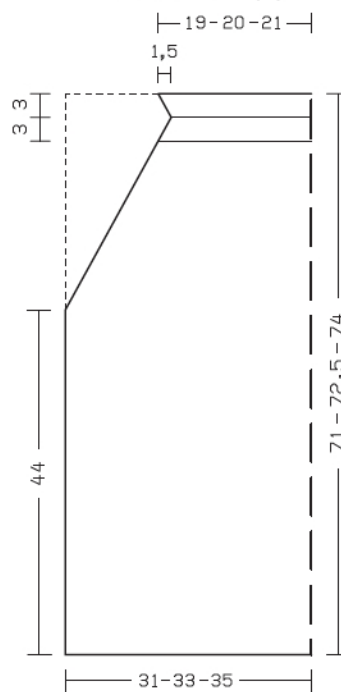
b) drawstring, 138 cm (54 1/2 ins) long, 5 cm (2 ins) wide, finished width 2.5 cm (1 in).

Use the shiny satin side as the right side of the fabric.

Vilene Bias Tape/ stay tape: Iron to wrong side of armhole edges.

### Diagram

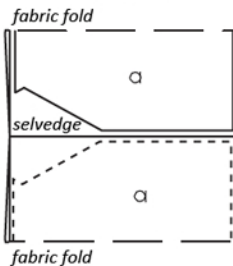
Measurements in cm  
front/back (a)



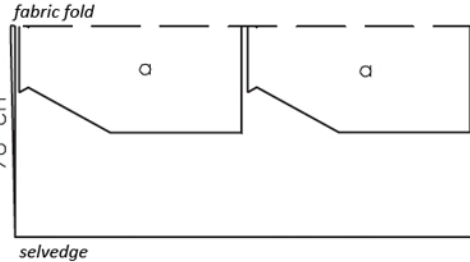
Fold the fabric as shown in the pattern layout, right side facing in. Cut piece b from a single layer of fabric.

### View A

Crepe, 140cm wide  
Sizes 34/36, 38/40



Sizes 42/44



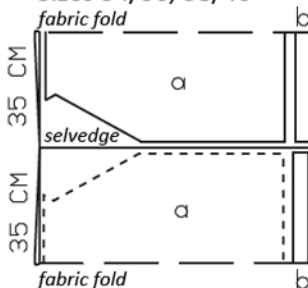
Crepe satin,  
140cm wide

Sizes 34/36 - 42/44

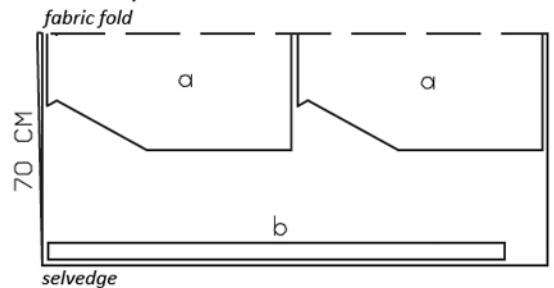


### View B

Chiffon, 140cm wide  
Sizes 34/36, 38/40



Sizes 42/44



### Top B

Chiffon:

a) front from diagram 1x, on a fold,

a) back from diagram 1x, on a fold,

b) drawstring, 138 cm (54 1/2 ins) long, 5 cm (2 ins) wide, finished width 2.5 cm (1 in).

Vilene Bias Tape/ stay tape: Iron to wrong side of armhole edges.

### Sewing

Views A, B

On front and back pieces, clip side allowances at fold lines. At armhole edges, press allowances to inside, turn in to a allowance width of 7 mm (1/4 in), and stitch in place.

On upper edges of front and back, turn self-facings to inside, on fold lines, turn in, and stitch as marked.

Stitch side seams. Neaten seam allowances together and press to one side. Sew upper ends of seam allowances in place by hand.

Fold drawstring strip lengthwise, right side facing in. Stitch edges together, leaving a section of seam open, for turning. Turn drawstring right side out. Sew seam opening closed. Pull drawstring into casings on upper edges of front and back. Try on top, knot drawstring ends together, and tie in a bow.

Neaten hem edge with closely spaced zigzag stitching: Press allowance to wrong fabric side. Work from right fabric side to stitch along fold edge with short, closely spaced zigzag stitches. On inside, carefully trim allowance close to stitching.

