

133 Dress

Burda sizes 72, 76, 80, 84, 88

Length from waist 119 cm (47 ins)

3/4-sleeves, approx. 15 cm (6 ins) shorter than normal

Materials

Duchesse,
width: 140 cm (55 ins)
length: 7.60 m (8 3/8 yds) for all sizes.

Lining,
width: 140 cm (55 ins)
length: 5.20 m (5 3/4 yds).

Sheer nylon,
width: 140 cm (55 ins)
length: 0.20 m (1/4 yd).

Interfacing.

Vilene Bias Tape/ stay tape.

1 invisible zip, 60 cm (24 ins) long.

Recommended fabrics: Duchesse.

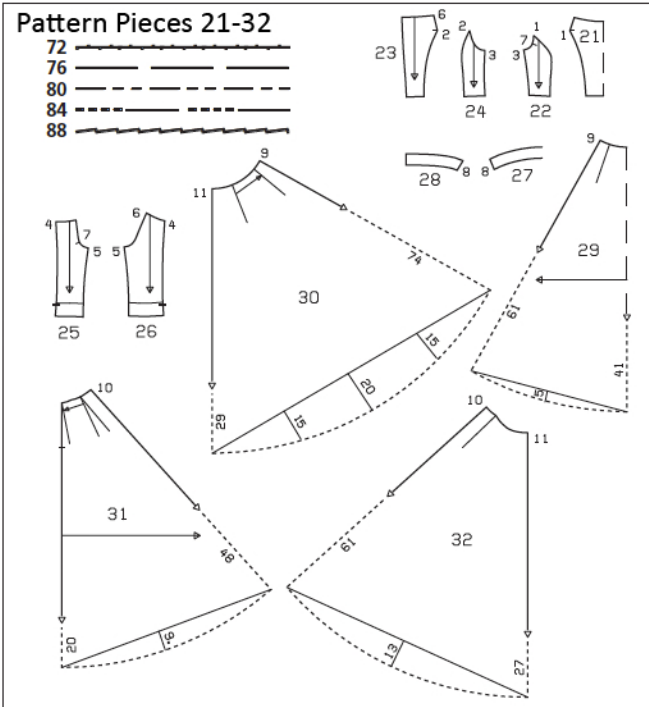
Preparations

Print the pattern out on letter or A4 sized paper. It is **very important** to not scale the document. Your pattern will print on multiple pages, which you will then tile together. Arrange the sheets on a large, hard and flat surface matching up the numbers and letters (i.e. 6A to 6A). Cut or fold one of the sides and match the edge to its corresponding side. Then, tape down in place so paper is secure.

Trace the pattern pieces from the pattern sheet following the lines and markings for style 133 and your size. Trace the sleeve facings from pieces 25 and 26 as separate pattern pieces. Glue sleeve facings together (lower sleeve seam). The pleat arrow on piece 31 is marked for size 72. For the other sizes, mark the pleat arrow according to the size lines.

burda style magazine patterns do not have seam allowance included. To be added:

Seams and edges 1.5 cm (5/8 in), hem 3 cm (1 1/4 ins), lining 1.5 cm (5/8 in).

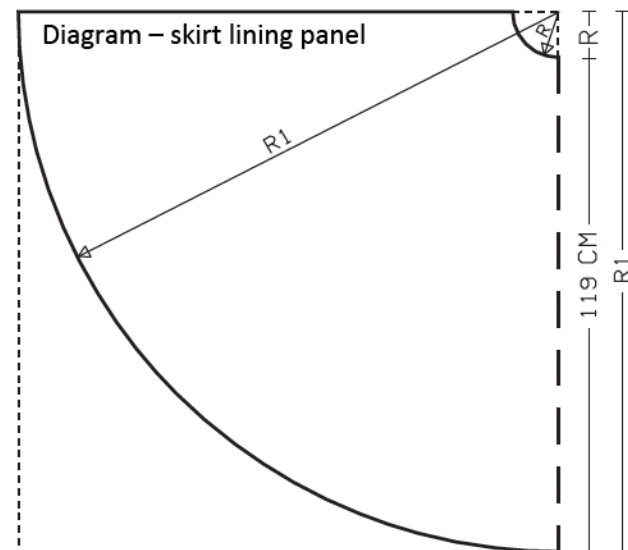


Follow the diagram to make a full-sized pattern piece for the skirt lining panel (a) as follows:

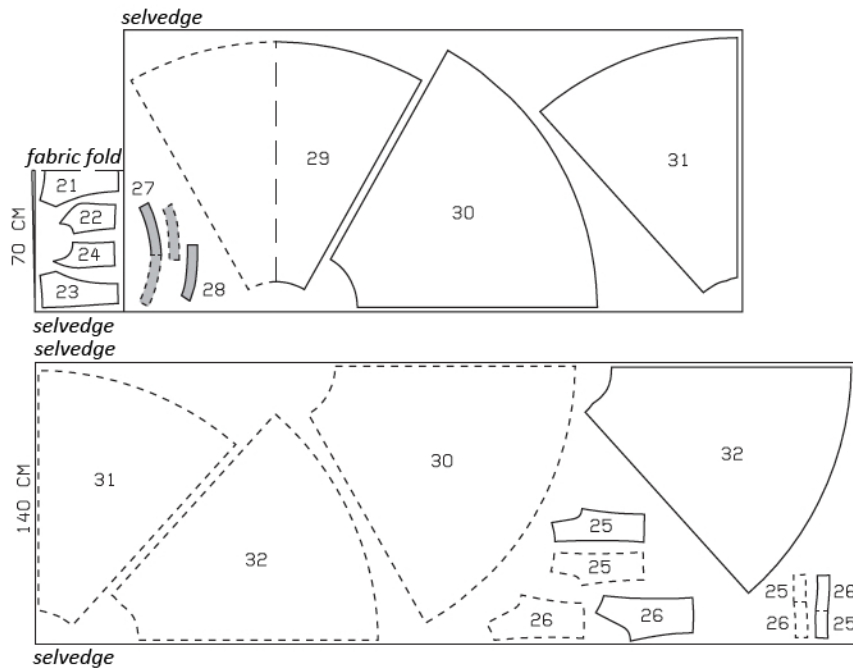
On a large sheet of wrapping paper – the upper edge and the right edge must form a right angle – stretch a thread from the upper right corner to mark the radius (R) for upper edge of skirt panel and the radius (R1) for the hem edge. Or measure the length of the skirt down from the upper edge at several points and then connect the points in an even curve to mark the hem edge.

Radius for waist edge (R)
size 72: 11 cm, size 76:
11.7 cm
size 80: 12.4 cm, size 84:
13.1 cm
size 88: 13.8 cm

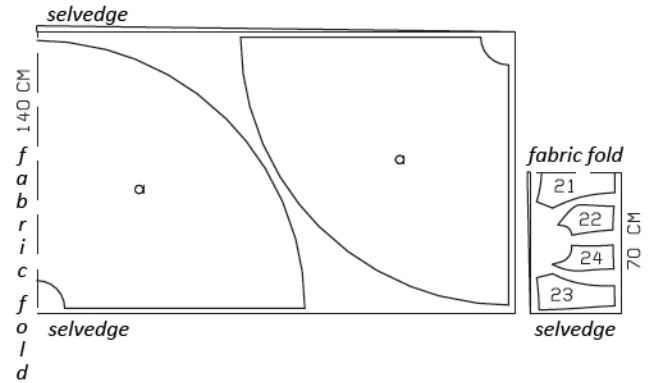
Radius for hem edge (R 1)
size 72: 130 cm, size 76:
130.7 cm
size 80: 131.4 cm, size 84:
132.1 cm
size 88: 132.8 cm



Duchesse, 140cm wide



Lining, 140cm wide



Right side faces in on a double layer of fabric, right side faces up on a single layer. Cut right and left pieces as opposites.

Cutting Out

Duchesse:

- 21 centre front, on a fold 1x
- 22 side front 2x
- 23 centre back 2x
- 24 side back 2x
- 25 sleeve front 2x
- 26 sleeve back 2x
- 25 + 26 sleeve facing 2x
- 27 front neck facing, on a fold 1x
- 28 back neck facing 2x
- 29 centre front skirt panel, on a fold 1x
- 30 side front skirt panel 2x
- 31 centre back skirt panel 2x
- 32 side back skirt panel 2x

Lining:

- pieces 21 to 24,
- a) front skirt panel from diagram 1x, on a fold,
- a) back skirt panel from diagram 2x.

Interfacing: See shaded area on pattern layout.
Iron Vilene Bias Tape/ stay tape to wrong side of neck edges of dress lining.

Sewing

Stitch front and back section seams on bodice. Stitch side seams. Press seam allowances open.

Stitch front and back section seams on skirt (seam numbers 9 and 10). Stitch side seams (seam number 11). Press all seams open.

Lay pleats in upper edge of front and back skirt panels in direction of arrows and baste. Seam allowances at back slit edges extend. Then make pleats over section seams, so that folds meet, and baste to upper skirt edge.

Stitch skirt to bodice. Press seam allowances up.

Sew invisible zip to back slit edges, see the "Helpful Hint" on page 3. Stitch centre back seam from lower edge to zip.

Stitch seams of bodice lining. Stitch side seams of skirt lining. Stitch centre back seam of skirt lining, leaving a slit, 22 cm (9 ins) long, at the top. Stitch skirt lining to bodice lining. Press seam allowances up.

Pull lining into dress, with wrong sides facing. Pin skirt attachment seams of dress and lining together exactly. Turn bodice lining down. Stitch seam allowances of skirt attachment seams together as far as possible, close to seam. Turn bodice lining up again and baste to bodice edge and to arm-hole edges. Turn edges under and sew to zip tapes.

Stitch lower sleeve seams. Pin sleeve facings to lower sleeve edges, right sides together. Beginning at slit mark, stitch along sleeve vent edges and hem edges. Turn upper edges of facings back at seam ends and pin. Stitch top sleeve seams as far as slit mark. Remove pins. Stitch facing seams.

Sewing Continued...

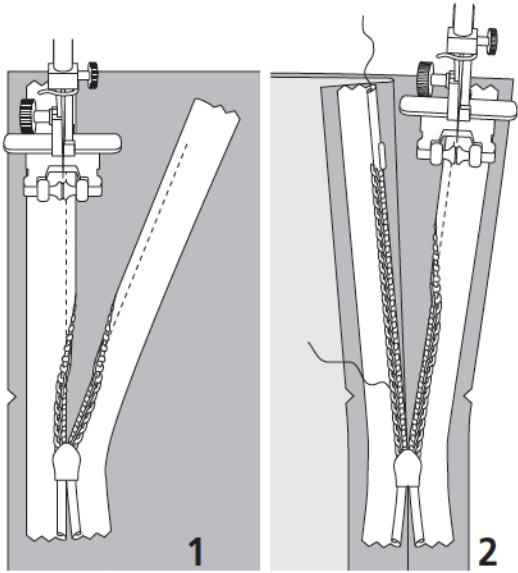
Turn facings to inside. Sew inner edges in place by hand.

Stitch sleeves to armhole edges. Trim seam allowances of sleeve attachment seams to 7 mm (1/4 in) wide and neaten together. Press seam allowances toward sleeves, from upper edges to beginnings of underarm curve.

Use the paper pattern pieces for the front and back neck facing to cut 2.5 cm (1 in) wide support strips for the neck edge from a double layer of sheer nylon, without seam allowances. Lay the doubled support strips on wrong side of facings, next to seam allowance, and edgestitch in place. Stitch seams of neck facing (seam number 8). Stitch facing to bodice edge, right sides together. Turn facing up and stitch to seam allowances, close to seam. Turn facing to inside, turn back facing edges under, and sew in place. Sew inside facing edge to lining.

Press hem allowance to inside and sew in place by hand. Hem lining so that it is approx. 2 cm (3/4 in) shorter than dress.





These special zippers come in various lengths. The zipper should be at least 2 cm (3/4 in) longer than the slit. It is sewn in place before the seam below the slit is stitched. A special presser foot is required to sew the zipper in place.

Sewing the zipper in place:

Open the zipper and push the coil back with your thumbnail to reveal the seam marking between the tape and the coil. Place the open zipper right side down on the right fabric side of one slit edge.

In order to stitch the zipper in place exactly along the marked seam line, you must first calculate the distance between the tape edge and the fabric edge as follows: width of seam allowance minus 1 cm (3/8 in) tape width = distance from edge of fabric. This will yield a value of 5 mm (3/16 in) if the width of the seam allowance is 1.5 cm (5/8 in).

Pin the top end of the zipper tape in place, the calculated distance from the edge of the fabric. The bottom end of the zipper will extend past the marked end of the slit. Place the presser foot on the zipper so that the coil is in the notch to the right of the needle (1). Stitch zipper in place, from the top to the marked end of the slit. Close zipper.

Place the other zipper tape face down on the opposite slit edge and pin in place at the top. Open zipper again. Place the presser foot on the top end of the zipper so that the coil is in the notch to the left of the needle (2). Sew the zipper in place, from the top to the end of the slit. Close zipper.

Now stitch the seam below the zipper, from bottom to top. Turn the loose lower end of the zipper out of the way, over the seam allowance. Stitch as close as possible to the last stitches of the zipper seams. Trim away excess zipper and bind the end with a scrap of fabric.

Additional Information:

Burda patterns do not include seam and hem allowances. We recommend adding 1-2 cm (3/8 - 3/4 inch) for seams and 2-5 cm (3/4 - 2 inch/es) for hems. Refer to your specific pattern instructions for exact measurements.

The fabric requirements are based on the fabric used for the original designs. These amounts will change if you use fabric of a different width. The pattern of the fabric determines whether all the pieces must be cut in the same direction or whether some can be reversed to save fabric.

The cutting layout printed with the instructions shows the best way to place the pattern pieces on our original fabric. Fold the fabric double with the right side facing in. The fabric then has a fold edge and a selvedge edge. When cutting from a single fabric layer, the right side should face up.

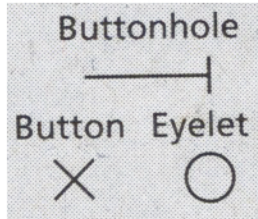
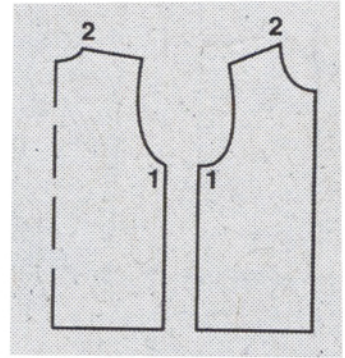
Pattern pieces which are shown in the cutting layout with broken outlines should be pinned to the fabric with their printed side facing down.

Grey shaded areas in the cutting layout indicate which pieces are to be interfaced.

Transfer the pattern piece lines to the wrong side of your fabric with burda dressmaker's carbon paper. Hand-baste along lines (e.g. for pockets or centre front) to make them visible on the right side of the fabric.

Key Symbols:

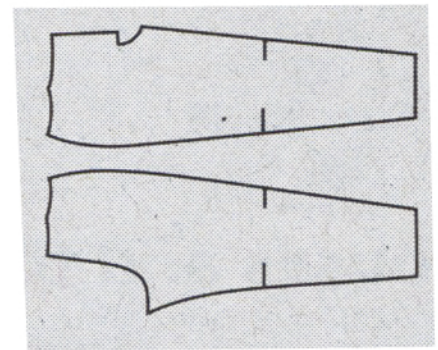
Seam numbers
show where pattern pieces must be sewn together. Match pieces with the same numbers.



Seam marks
on long seams. Match the small symbols to one another.



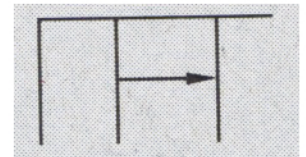
Presser foot
is the symbol for seam and top-stitching lines.



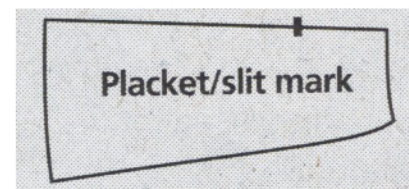
Scissors
indicate edges to be cut without seam allowances and also slash lines, e.g. pocket openings.



Pleat symbol
Fold pleat in direction of arrow.



Placket/slit mark
Indicates beginning/end of placket/slit.



Gather
Ease
Stretch

