

### 134 Coat

Burda sizes 36, 38, 40, 42, 44

Back length approx. 90 cm (35 1/2 ins)

3/4-sleeves, approx. 47 cm (18 1/2 ins) long

### Materials

**Piqué,**  
width: 130 cm (51 ins)  
length: 2.35 – 2.35 – 2.40 – 2.40 – 2.45 m  
(2 5/8 – 2 5/8 – 2 5/8 – 2 5/8 – 2 3/4 yds).

**Lining,**  
width: 140 cm (55 ins)  
length: 1.50 m (1 3/4 yds) for all sizes.

**Interfacing.**

**Vilene Bias Tape/ stay tape.**

1 separating two-way zip, 70 cm (28 ins) long.

Lightweight raglan shoulder pads.

**Recommended fabrics:** Lightweight coat fabrics with some body.

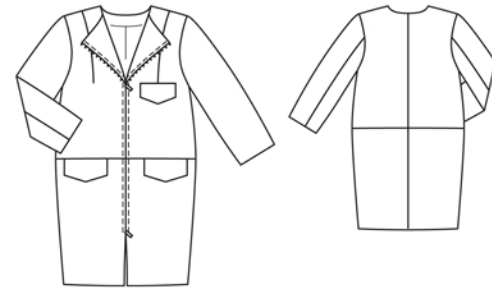
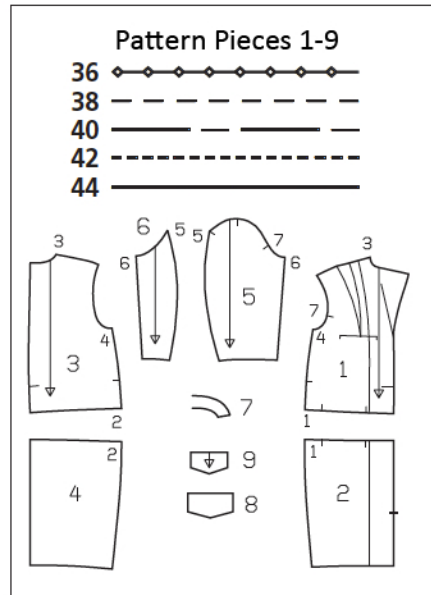
### Preparations

Print the pattern out on letter or A4 sized paper. It is **very important** to not scale the document. Your pattern will print on multiple pages, which you will then tile together. Arrange the sheets on a large, hard and flat surface matching up the numbers and letters (i.e. 6A to 6A). Cut or fold one of the sides and match the edge to its corresponding side. Then, tape down in place so paper is secure.

Trace the pattern pieces from the pattern sheet following the lines and markings for style 134 and your size. For the front facing, lay pieces 1 and 2 together and trace the marked facing. To cut the lining, lay pieces 1 and 2 together and lay pieces 3 and 4 together.

**burda style magazine patterns do not have seam allowance included. To be added:**

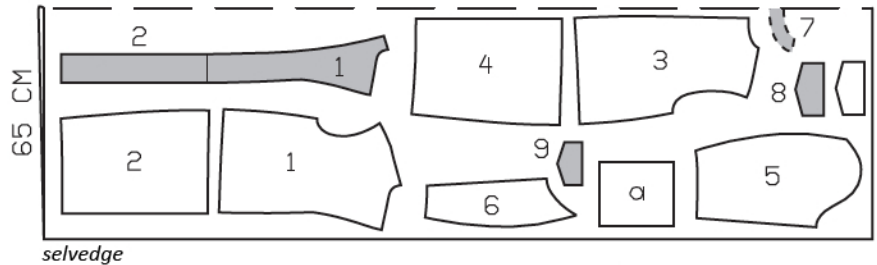
Seams and edges 1.5 cm (5/8 in), hem and sleeve hems 4 cm (15/8 ins) (flare hem allowances on pieces 2 and 4 at sides and on pieces 5 and 6 at centre back seam). Cut lining pieces with 1.5 cm (5/8 in) wide seam and hem allowances.



Cut from a double layer of fabric, right side facing in.

**Piqué, 130cm wide**

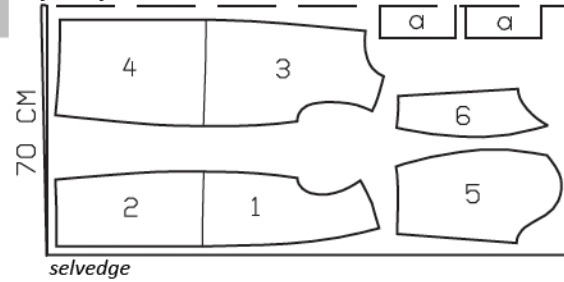
*fabric fold*



*selvedge*

**Lining, 140cm wide**

*fabric fold*



*selvedge*

### Cutting Out

**Piqué:**

- 1 upper front 2x
- 2 lower front 2x
- 1 + 2 front facing 2x
- 3 upper back 2x
- 4 lower back 2x
- 5 upper sleeve 2x
- 6 under sleeve 2x
- 7 back facing, on a fold 1x
- 8 lower flap 4x
- 9 upper flap 2x

Draft the following piece NOT included in the pattern:

- a) 2 pocket pieces, 18 cm (7 1/8 ins) wide, 21 cm (8 3/8 ins) long (incl. allowances).

**Lining:** pieces 1 and 2 placed together and minus width of facing; pieces 3 and 4 placed together, minus neck facing and with an ease pleat of approx. 2 cm (3/4 in) at centre back; pieces 5 and 6; and also pocket piece.

**Interfacing:** See shaded area on pattern layout. Also interface hem allowances. Iron Vilene Bias Tape/ stay tape to wrong side of armhole edges.

## Sewing

Stitch upper back pieces to lower back pieces. Stitch centre back seam. Press seam allowances open.

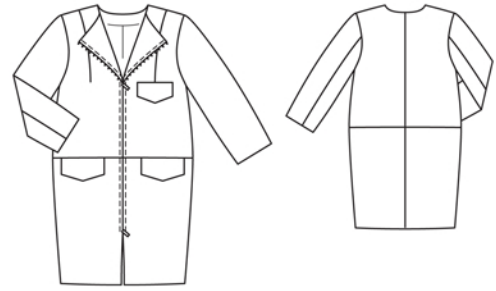
On fronts, cut darts along centre, between marked lines, to approx. 10 cm (4 ins) before pointed ends. Stitch darts. Trim dart allowances to 1 cm (3/8 in) wide and press open, pressing points of darts flat.

Stitch each interfaced flap piece to flap piece with no interfacing, right sides together, leaving attachment edge open. Turn right side out. Trim allowances on attachment edge of upper flap to 7 mm (1/4 in) wide and neaten together. Stitch upper flap to left front, along attachment line, and press down. Baste lower flaps to lower edge of upper fronts, between markings.

Inseam pockets with flaps, horizontal section seam: Pin each pocket lining piece to marked pocket opening edge of lower front, right sides facing. At beginning of pocket opening, stitch across seam allowance, down to 3 mm (1/8 in) below marked seam line. Then stitch 3 mm (1/8 in) from marked seam line for the length of the pocket opening, and at end of pocket opening stitch up across seam allowance again. Trim seam allowances and clip into corners. Turn pocket pieces to inside. Press pocket opening edges. On inside, lay pocket pieces of main fabric on attached pocket pieces – seam allowances extend past pocket opening edges. Stitch pocket pieces together. Stitch upper fronts to lower fronts and pocket pieces. Clip seam allowances of lower fronts at edges of pocket pieces. Press seam allowances open and press allowances of pocket opening edges up.

Stitch side seams, shoulder seams, and facing seams. Press seam allowances open.

Lay facing on fronts and back, right sides together, and pin. Stitch along neck edge. Trim seam allowances to 5 mm (3/16 in). Turn facing up and press seam allowances open approx. 4 cm (1 5/8 ins) long, beginning at front edges. On front coat edges and front facing edges, press allowances above slit mark to inside. Lay facing on fronts again, right sides together. Stitch front



edges together below slit mark, turning pressed-under allowances back again to do so. Turn facing to inside. Press edges.

Open zip, turn in top ends of zip tapes. Baste halves of zip under front edges, under facings, so that zip teeth are covered. Baste facings to front edges over zips. Topstitch 7 mm (1/4 in) from front edges, to the length of the zip.

Unfold facings at hem. Press hem allowance to inside then turn down again.

Stitch sleeve seams. Press sleeve hem allowances to inside and sew in place by hand.

Set in sleeves. Sew shoulder pads in place.

Stitch darts in front lining pieces.

Sew lining: On lining backs, stitch allowances of centre seam together, 1 cm (3/8 in) from edge. For the ease pleat, stitch along centre back from upper edge down and from lower edge up, each approx. 5 cm (2 ins) long, and baste in between. Press pleat to one side. Stitch seams of lining. Set in sleeve linings.

Sew lining in jacket, jacket hem: Stitch lining to inside facing edge, right sides together. Lay lining inside jacket, with wrong sides facing, pulling linings into sleeves. Turn hem allowance to inside and sew in place by hand. Turn lining edge under along hem edge and press fold edge lightly. Push upward in a shallow curve and pin to hem allowance. Sew facing and lining in place. Lay extra length of lining down and press lightly.

Turn in sleeve linings and sew to hem allowance. Lay extra length of lining down and press.

## Additional Information:

**Burda patterns do not include seam and hem allowances.** We recommend adding 1-2 cm (3/8 - 3/4 inch) for seams and 2-5 cm (3/4 - 2 inch/es) for hems. Refer to your specific pattern instructions for exact measurements.

The fabric requirements are based on the fabric used for the original designs. These amounts will change if you use fabric of a different width. The pattern of the fabric determines whether all the pieces must be cut in the same direction or whether some can be reversed to save fabric.

The cutting layout printed with the instructions shows the best way to place the pattern pieces on our original fabric. Fold the fabric double with the right side facing in. The fabric then has a fold edge and a selvedge edge. When cutting from a single fabric layer, the right side should face up.

Pattern pieces which are shown in the cutting layout with broken outlines should be pinned to the fabric with their printed side facing down.

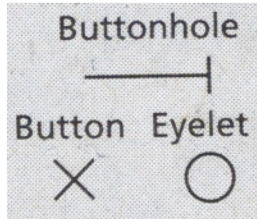
Grey shaded areas in the cutting layout indicate which pieces are to be interfaced.

Transfer the pattern piece lines to the wrong side of your fabric with burda dressmaker's carbon paper. Hand-baste along lines (e.g. for pockets or centre front) to make them visible on the right side of the fabric.

## Key Symbols:

### Seam numbers

show where pattern pieces must be sewn together. Match pieces with the same numbers.



### Seam marks

on long seams. Match the small symbols to one another.



**Presser foot** is the symbol for seam and top-stitching lines.



### Scissors

indicate edges to be cut without seam allowances and also slash lines, e. g. pocket openings.



### Pleat symbol

Fold pleat in direction of arrow.



### Placket/slit mark

Indicates beginning/ end of placket/slit.



**Gather**  
**Ease**  
**Stretch**

