

112 Dress

Burda sizes 17, 18, 19, 20, 21

Length from waist 114 cm (45 ins)

Materials

Tulle lace with two scalloped edges,
width: 125 cm (49 ins)
length: 7.20 – 7.50 – 7.90 – 8.30 – 8.60 m
(7 7/8 – 8 1/4 – 8 5/8 – 9 1/8 – 9 1/2 yds).

Crêpe de chine for underdress,
width: 140 cm (55 ins)
length: 2.50 – 2.50 – 2.60 – 2.70 – 2.75 m
(2 3/4 – 2 3/4 – 2 7/8 – 3 – 3 1/8 yds).

A piece of organza, 40 x 70 cm (16 x 28 ins).

Interfacing.

Vilene Fuse-n-Tear embroidery backing.

Boning tape, 8 mm (a generous 1/4 in) wide and
0.80 m (7/8 yd) long.

1 invisible zip, 22 cm (9 ins) long.

Recommended fabrics: Fine lace fabrics with two scalloped edges. Crêpe de chine or satin for the underdress.

Preparations

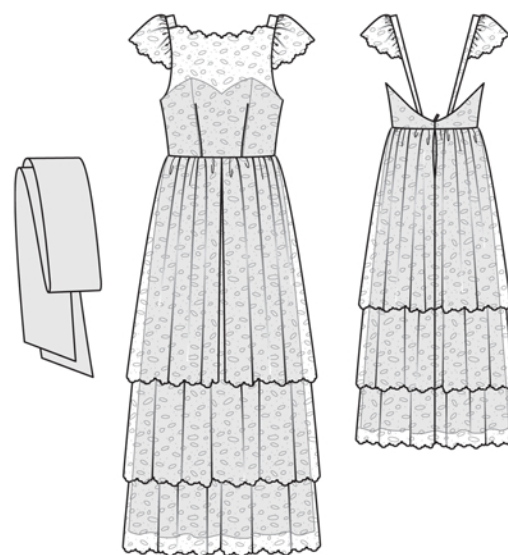
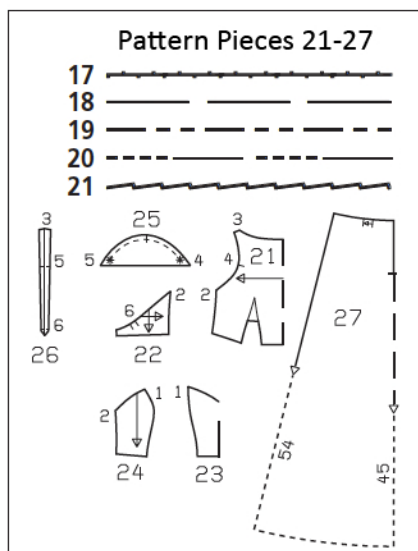
Print the pattern out on letter or A4 sized paper. It is **very important** to not scale the document. Your pattern will print on multiple pages, which you will then tile together. Arrange the sheets on a large, hard and flat surface matching up the numbers and letters (i.e. 6A to 6A). Cut or fold one of the sides and match the edge to it's corresponding side. Then, tape down in place so paper is secure.

Trace the pattern pieces from the pattern sheet following the lines and markings for style 112 and your size.

burda style magazine patterns do not have seam allowance included.

Seam and hem allowance to be added:

Seams and edges 1.5 cm (5/8 in), hem of underdress 1 cm (3/8 in).



Cutting Out

Lace fabric:

21 front, on a fold 1x
22 back 2x
25 sleeve 2x
26 strap 2x

Draft the following pieces NOT included in the pattern:

a) lower skirt tier, 230 – 240 – 250 – 265 – 275 cm (90 1/2 – 94 1/2 – 98 1/2 – 104 1/4 – 108 1/4 ins) wide, 114 cm (45 ins) long,
b) middle skirt tier, 230 – 240 – 250 – 265 – 275 cm (90 1/2 – 94 1/2 – 98 1/2 – 104 1/4 – 108 1/4 ins) wide, 92 cm (36 ins) long,
c) 2 upper skirt tiers, 115 – 120 – 125 – 130 – 140 cm (45 1/4 – 47 1/4 – 49 1/4 – 51 1/4 – 55 1/4 ins) wide, 65 cm (25 3/4 ins) long,
d) scalloped edge for neck edge, approx. 40 cm (16 ins) long, 7 cm (3 ins) wide. The scalloped edge of the lace forms the lower edges of the skirt tiers and sleeves.

Organza:

26 strap 2x
– 2 bias strips for armholes, 36 – 37 – 38 – 40 – 42 cm (14 1/4 – 14 1/2 – 15 – 15 3/4 – 16 1/2 ins) long, 4 cm (1 5/8 ins) wide (incl. allowances),
– facing strip for boning casing, 2 pieces, each 30 cm (12 ins) long, and 2 pieces, each 20 cm (8 ins) long, all 2 cm (3/4 in) wide (incl. allowances).

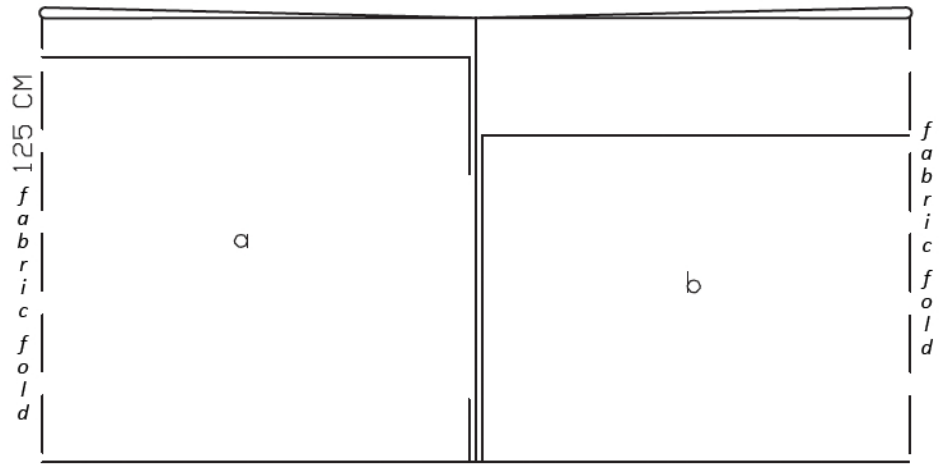
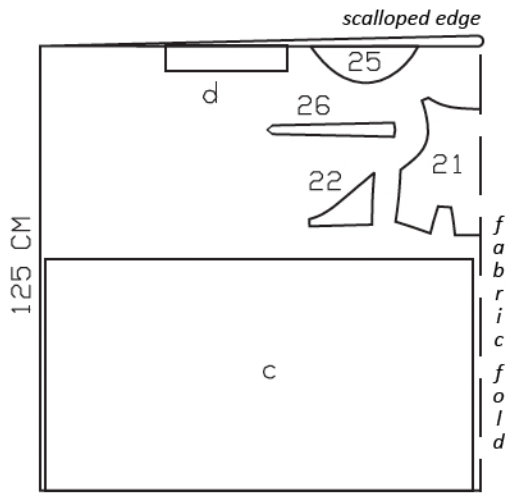
Crêpe de chine:

23 centre front, on a fold 2x
24 side front 4x
22 back 4x
27 front skirt panel, on a fold 1x
27 back skirt panel 2x

e) sash, a total of 230 cm (90 1/2 ins) long, 34 cm (13 1/2 ins) wide, finished width 17 cm (6 3/4 ins).

Interfacing: See shaded area on pattern layout. Iron interfacing to wrong side of outer pieces.

Lace Fabric, 125cm wide



scalloped edge

Sewing

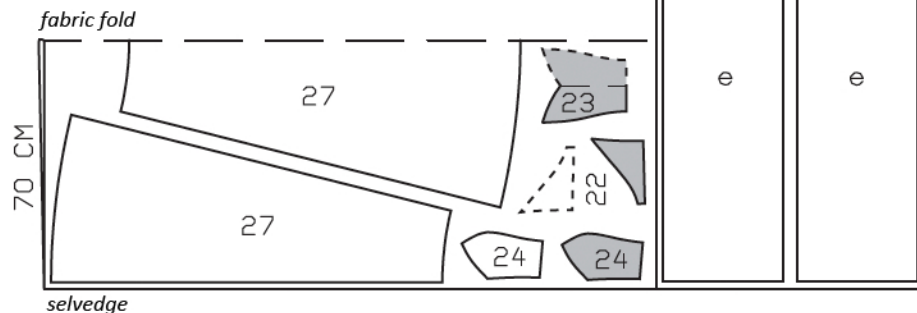
Appliqué scalloped edge: Iron embroidery backing to wrong side of front neck edge, approx. 15 cm (6 ins) wide, to stabilize the appliqué. Lay scalloped edge on front, with wrong side facing right side, so that scallops extend past neck edge, approx. 1.5 cm (5/8 in) wide. The middle scallop of the lace edge should lie centred on the front. In order to lay the lace smoothly on the slightly curved neck edge, clip inner edge of lace several times, clipping only up to inner edge of lace motif. Pin scalloped edge in place. Stitch inner edge of motif in place with small, closely spaced zigzag stitching. Trim inside edge of scallops close to zigzag stitching. Also trim upper edge of front close to stitching. Trim extending ends, leaving seam allowances at shoulder seams and armholes. Carefully remove embroidery backing.

Stitch darts in front piece of lace fabric. Trim dart allowances to 7 mm (1/4 in) wide and press toward centre. Stitch back pieces to front. Trim seam allowances. Press allowances onto back.

Baste organza to wrong side of strap pieces of lace fabric and treat these pieces as one layer of fabric from now on. Fold straps on fold line, with right sides facing in. Stitch lengthwise edges together between markings (seam numbers 5 and 6). Trim seam allowances and clip at marking (seam number 5). Turn straps right side out and press. Stitch front strap ends to narrow shoulder edges of front. Trim seam allowances and press onto front.

Fold the fabric as shown in the pattern layout. Right side faces in on a double layer of fabric; right side faces up on a single layer.

Crepe de Chine , 140cm wide



Gather sleeve caps between asterisks. Baste sleeve to front armhole edges and straps, between markings (seam numbers 4 and 5). Fold bias strips of organza in half lengthwise and press, right side facing out. Pin folded bias strips to upper back edges and front armhole edges so that fold edges of strips lie on garment piece, 1 cm (3/8 in) past seam line and ends of strips lie on sleeves. Stitch bias strips and sleeves in place as continuous seams. Trim seam allowances. Turn bias strips to inside and press edges.

Stitch section seams on fronts of crêpe de chine (seam number 1). Stitch back pieces each to front (seam number 2). Press seam allowances open. On outer piece, lay facing strip for boning casing on inside, over seam allowance, and pin. Trim extending ends of strip. Stitch 5 mm (3/16 in) to each side of seams. Lay outside and inside pieces together, right sides facing, and stitch along upper edge, leaving narrow attachment edges on back open, for straps. Trim seam allowances and clip allowances at centre front. Turn right side out. Press upper edge. Cut boning pieces each 5 mm (3/16 in) shorter than casing and insert in respective casing. Baste bottom casing ends closed.

Sewing Continued...

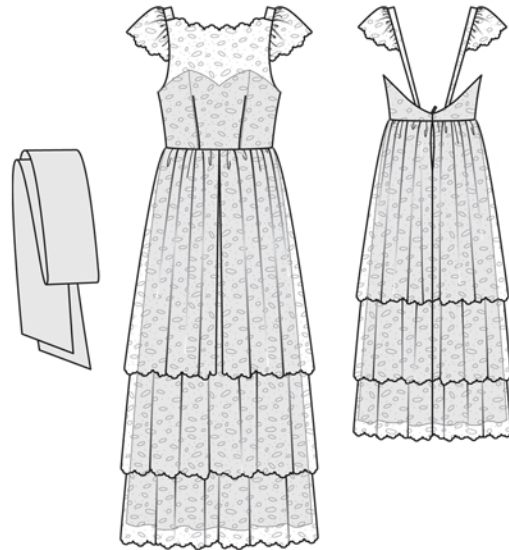
Lay bodice of lace fabric on bodice of crêpe de chine, with wrong side facing right side. Baste together along upper back edges and front armhole edges, not catching side crêpe de chine piece in back. To try on the garment, slip strap ends into openings in seam and pin (seam number 6). After trying on, turn inside bodice up again. Stitch seam openings closed, catching straps.

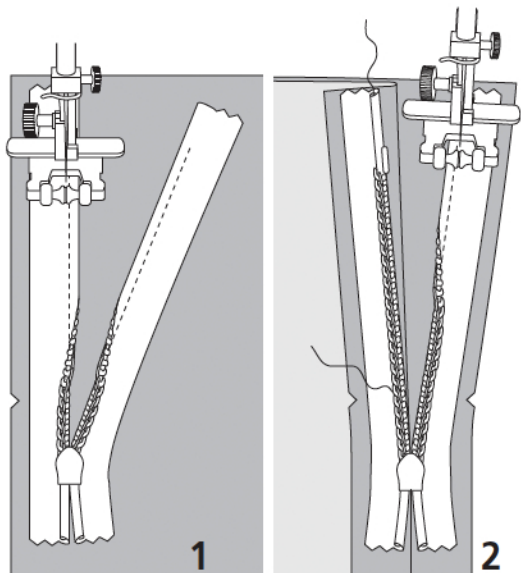
Stitch side seams on skirt panels of crêpe de chine. Lay pleats in upper skirt edge in direction of arrows and baste. On lower skirt tier of lace fabric, measure and mark 16 cm (6 3/8 ins) down from upper edge on both back edges, for the slit. Turn allowances on slit edges to inside – beginning at end of slit taper in a shallow curve to edge of seam allowance. Turn edges of allowances under and stitch. Measure and hem slit on middle skirt tier of lace fabric as described. On upper skirt tiers of lace fabric, narrowly hem front edges and measure and hem slit at back edges as described. Lay skirt tiers of lace fabric together. Gather upper edges together and pin to upper edge of crêpe de chine underskirt – allowances on slit edges of underskirt extend.

Stitch skirt to bodice, not catching lining. Turn in lower lining edge and sew to skirt attachment seam. Baste back lining edges in place. Sew back pieces of lace fabric to back pieces of crêpe de chine by hand.

Sew invisible zip to back edges, above marking, see the “Helpful Hint” on next page. Begin at upper edge and leave ends of zip tape extending at the top. Stitch centre back seam from lower edge to zip. Turn in top ends of zip tapes and sew to upper back edge, together with seam allowances. Stitch centre back seams of lace skirt tiers each below hemmed slit edges. Stitch hem of underskirt.

Fold sash lengthwise, right side facing in. Trim ends at an angle. Stitch edges together, leaving a section of seam open for turning. Turn sash right side out. Sew opening closed.





These special zippers come in various lengths. The zipper should be at least 2 cm (3/4 in) longer than the slit. It is sewn in place before the seam below the slit is stitched. A special presser foot is required to sew the zipper in place.

Sewing the zipper in place:

Open the zipper and push the coil back with your thumbnail to reveal the seam marking between the tape and the coil. Place the open zipper right side down on the right fabric side of one slit edge.

In order to stitch the zipper in place exactly along the marked seam line, you must first calculate the distance between the tape edge and the fabric edge as follows: width of seam allowance minus 1 cm (3/8 in) tape width = distance from edge of fabric. This will yield a value of 5 mm (3/16 in) if the width of the seam allowance is 1.5 cm (5/8 in).

Pin the top end of the zipper tape in place, the calculated distance from the edge of the fabric. The bottom end of the zipper will extend past the marked end of the slit. Place the presser foot on the zipper so that the coil is in the notch to the right of the needle (1). Stitch zipper in place, from the top to the marked end of the slit. Close zipper.

Place the other zipper tape face down on the opposite slit edge and pin in place at the top. Open zipper again. Place the presser foot on the top end of the zipper so that the coil is in the notch to the left of the needle (2). Sew the zipper in place, from the top to the end of the slit. Close zipper.

Now stitch the seam below the zipper, from bottom to top. Turn the loose lower end of the zipper out of the way, over the seam allowance. Stitch as close as possible to the last stitches of the zipper seams. Trim away excess zipper and bind the end with a scrap of fabric.

Additional Information:

Burda patterns do not include seam and hem allowances. We recommend adding 1-2 cm (3/8 - 3/4 inch) for seams and 2-5 cm (3/4 - 2 inch/es) for hems. Refer to your specific pattern instructions for exact measurements.

The fabric requirements are based on the fabric used for the original designs. These amounts will change if you use fabric of a different width. The pattern of the fabric determines whether all the pieces must be cut in the same direction or whether some can be reversed to save fabric.

The cutting layout printed with the instructions shows the best way to place the pattern pieces on our original fabric. Fold the fabric double with the right side facing in. The fabric then has a fold edge and a selvedge edge. When cutting from a single fabric layer, the right side should face up.

Pattern pieces which are shown in the cutting layout with broken outlines should be pinned to the fabric with their printed side facing down.

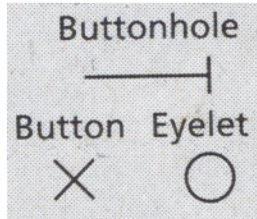
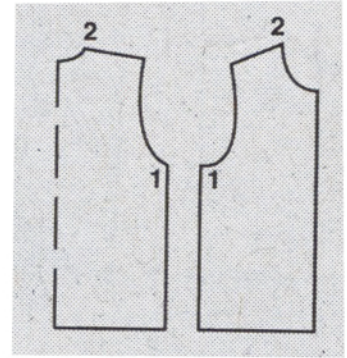
Grey shaded areas in the cutting layout indicate which pieces are to be interfaced.

Transfer the pattern piece lines to the wrong side of your fabric with burda dressmaker's carbon paper. Hand-baste along lines (e.g. for pockets or centre front) to make them visible on the right side of the fabric.

Key Symbols:

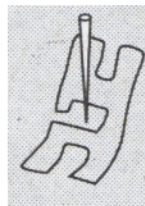
Seam numbers

show where pattern pieces must be sewn together. Match pieces with the same numbers.

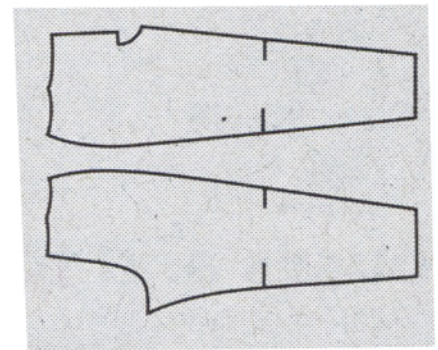


Seam marks

on long seams. Match the small symbols to one another.



Presser foot is the symbol for seam and top-stitching lines.



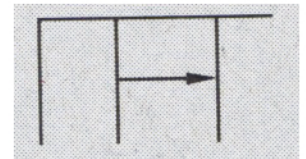
Scissors

indicate edges to be cut without seam allowances and also slash lines, e.g. pocket openings.



Pleat symbol

Fold pleat in direction of arrow.



Placket/slit mark

Indicates beginning/ end of placket/slit.



Gather
Ease
Stretch

