

108 Skirt

Burda sizes 34, 36, 38, 40, 42, 44

Skirt length 58 cm (23 ins)

(upper waistband edge = waist)

Overskirt length 60 cm (23 3/4 ins)

Materials

Broderie anglaise,
width: 145 cm (57 ins)
length: 0.75 m (7/8 yd) for all sizes.

Organza for the overskirt,
width: 140 cm (55 ins)
length: 1.25 m (1 1/2 yds).

Interfacing.

1 invisible zip, 22 cm (9 ins) long.

1 button.

Recommended fabrics: Skirt fabrics combined with fine sheer fabric.

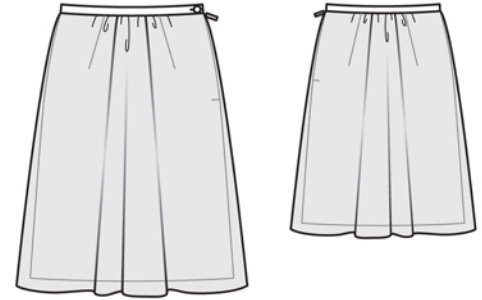
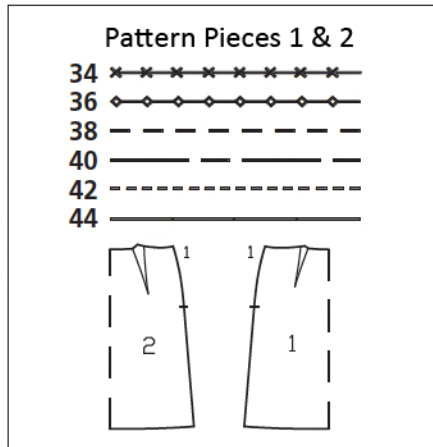
Preparations

Print the pattern out on letter or A4 sized paper. It is **very** important to not scale the document. Your pattern will print on multiple pages, which you will then tile together. Arrange the sheets on a large, hard and flat surface matching up the numbers and letters (i.e. 6A to 6A). Cut or fold one of the sides and match the edge to its corresponding side. Then, tape down in place so paper is secure.

Trace the pattern pieces from the pattern sheet following the lines and markings for style 108 and your size.

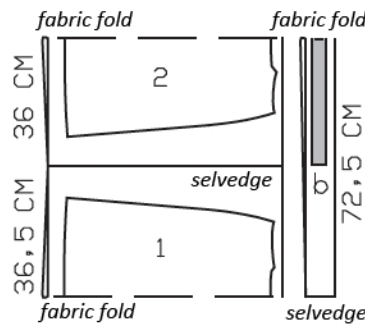
burda style magazine patterns do not have seam allowance included.

Seam and hem allowance to be added:
Seams and edges 1.5 cm (5/8 in), hem 4 cm (1 5/8 ins), hem of overskirt 1 cm (3/8 in).

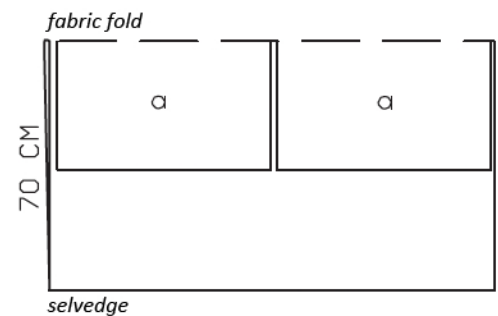


Fold the fabric as shown in the pattern layout, right side facing in.

Broderie anglaise, 145cm wide



Organza, 140cm wide



Cutting Out

Broderie anglaise:

- 1 front skirt panel, on a fold 1x
- 2 back skirt panel, on a fold 1x

Draft the following pieces NOT included in the pattern:

- b) waistband with 2 cm (3/4 in) underlap, 67 – 71 – 75 – 79 – 83 – 87 cm (26 1/2 – 28 – 29 3/4 – 31 1/4 – 32 3/4 – 34 1/4 ins) long, 4 cm (1 1/2 ins) wide, finished width 2 cm (3/4 in).

Organza:

- a) 2 overskirt panels, 70 – 72 – 74 – 76 – 78 – 80 cm (27 3/4 – 28 1/2 – 29 1/4 – 30 – 30 3/4 – 31 1/2 ins) wide, 60 cm (23 3/4 ins) long.

Interfacing: See shaded area on pattern layout.

Sewing

Stitch front and back darts. Press darts toward centre. Stitch right side seam. Press seam allowances open.

Stitch right side seam of overskirt as a french seam (double seam): First lay fabric pieces together, wrong sides facing, and stitch the 1.5 cm wide seam allowances together, 7 mm (1/4 in) from fabric edge. Press seam allowances open. Then lay pieces together, right sides facing, with the seam exactly along the fold. Now stitch along marked seam line, 8 mm (a generous 1/4 in) from fold edge. Press seam allowances to one side.

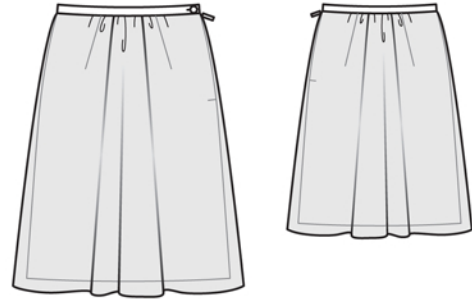
Gather upper edge of overskirt to match skirt, leaving (2 3/4 ins) ungathered at each side.

Lay overskirt on skirt, with wrong side facing right side. Baste upper edges together. Baste side edges together, from upper edge to marked end of slit.

Sew invisible zip to left side skirt edges, see the "Helpful Hint" on next page. Clip seam allowance of overskirt at bottom of zip slit. Stitch left side seam of skirt from lower edge to zip slit. Sew left side seam of overskirt as a french seam.

Stitch waistband to upper skirt edge, leaving underlap extending at back edge of slit. Press seam allowances of attachment seam and of other long waistband edge onto waistband. Fold waistband lengthwise, right side facing in. Stitch across ends. Turn right side out. Sew inside edge in place by hand. Sew underlap edges together. Work buttonhole in front waistband end.

Press hem allowance of skirt to inside and sew by hand. Finish hem edge of overskirt with closely spaced zigzag stitching; Press allowance to wrong fabric side. Work from right side of fabric to stitch along fold edge with closely spaced zigzag stitching. On inside, trim allowance close to stitching.





These special zippers come in various lengths. The zipper should be at least 2 cm (3/4 in) longer than the slit. It is sewn in place before the seam below the slit is stitched. A special presser foot is required to sew the zipper in place.

Sewing the zipper in place:

Open the zipper and push the coil back with your thumbnail to reveal the seam marking between the tape and the coil. Place the open zipper right side down on the right fabric side of one slit edge.

In order to stitch the zipper in place exactly along the marked seam line, you must first calculate the distance between the tape edge and the fabric edge as follows: width of seam allowance minus 1 cm (3/8 in) tape width = distance from edge of fabric. This will yield a value of 5 mm (3/16 in) if the width of the seam allowance is 1.5 cm (5/8 in).

Pin the top end of the zipper tape in place, the calculated distance from the edge of the fabric. The bottom end of the zipper will extend past the marked end of the slit. Place the presser foot on the zipper so that the coil is in the notch to the right of the needle (1). Stitch zipper in place, from the top to the marked end of the slit. Close zipper.

Place the other zipper tape face down on the opposite slit edge and pin in place at the top. Open zipper again. Place the presser foot on the top end of the zipper so that the coil is in the notch to the left of the needle (2). Sew the zipper in place, from the top to the end of the slit. Close zipper.

Now stitch the seam below the zipper, from bottom to top. Turn the loose lower end of the zipper out of the way, over the seam allowance. Stitch as close as possible to the last stitches of the zipper seams. Trim away excess zipper and bind the end with a scrap of fabric.

Additional Information:

Burda patterns do not include seam and hem allowances. We recommend adding 1-2 cm (3/8 - 3/4 inch) for seams and 2-5 cm (3/4 - 2 inch/es) for hems. Refer to your specific pattern instructions for exact measurements.

The fabric requirements are based on the fabric used for the original designs. These amounts will change if you use fabric of a different width. The pattern of the fabric determines whether all the pieces must be cut in the same direction or whether some can be reversed to save fabric.

The cutting layout printed with the instructions shows the best way to place the pattern pieces on our original fabric. Fold the fabric double with the right side facing in. The fabric then has a fold edge and a selvedge edge. When cutting from a single fabric layer, the right side should face up.

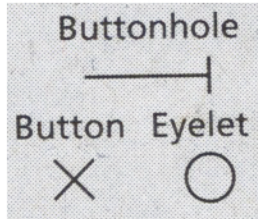
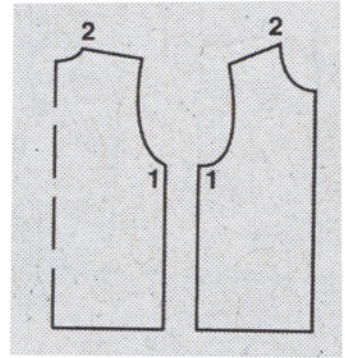
Pattern pieces which are shown in the cutting layout with broken outlines should be pinned to the fabric with their printed side facing down.

Grey shaded areas in the cutting layout indicate which pieces are to be interfaced.

Transfer the pattern piece lines to the wrong side of your fabric with burda dressmaker's carbon paper. Hand-baste along lines (e.g. for pockets or centre front) to make them visible on the right side of the fabric.

Key Symbols:

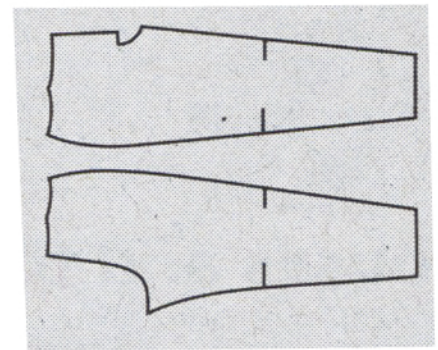
Seam numbers
show where pattern pieces must be sewn together. Match pieces with the same numbers.



Seam marks
on long seams. Match the small symbols to one another.



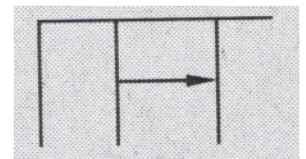
Presser foot
is the symbol for seam and top-stitching lines.



Scissors
indicate edges to be cut without seam allowances and also slash lines, e.g. pocket openings.



Pleat symbol
Fold pleat in direction of arrow.



Placket/slit mark
Indicates beginning/end of placket/slit.

