

118 Dress

Burda sizes 36, 38, 40, 42, 44

Length from waist 62 cm (24 1/2 ins)

Materials

Jacquard with wide widthwise border print, width: 150 cm (59 ins)
length: 1.70 m (1 7/8 yds) for all sizes, with a pattern repeat of 170 cm (67 ins).

Alternative: plain fabric, width: 150 cm (59 ins)
length: 1.20 m (1 3/8 yds).

Lining, width: 140 cm (55 ins)
length: 1.20 m (1 3/8 yds).

Vilene Bias Tape/ stay tape.

1 invisible zip, 40 cm (16 ins) long.

Recommended fabrics: Dress fabrics with some body.

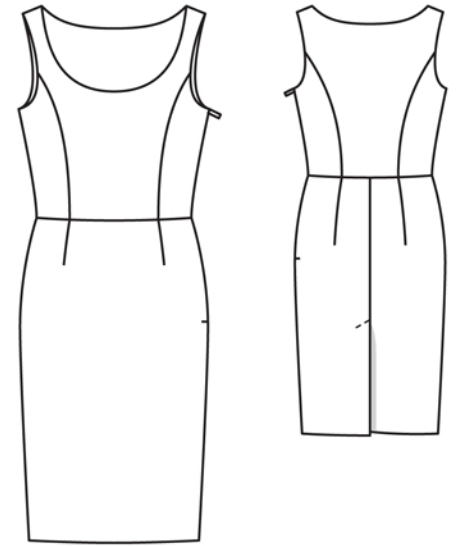
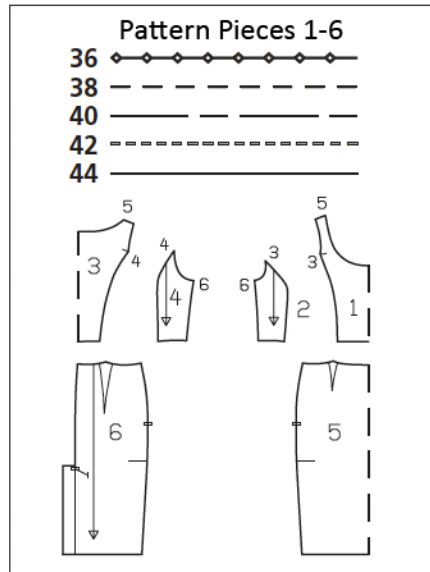
Preparations

Print the pattern out on letter or A4 sized paper. It is **very important** to not scale the document. Your pattern will print on multiple pages, which you will then tile together. Arrange the sheets on a large, hard and flat surface matching up the numbers and letters (i.e. 6A to 6A). Cut or fold one of the sides and match the edge to its corresponding side. Then, tape down in place so paper is secure.

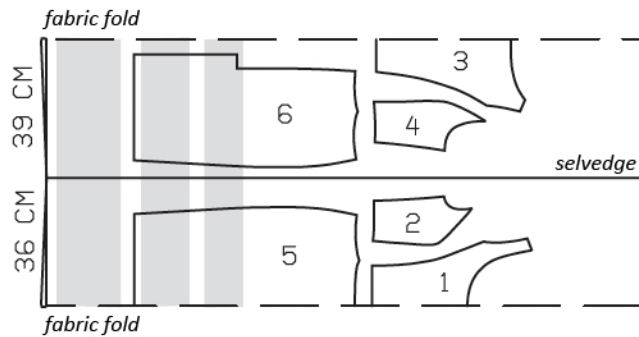
Trace the pattern pieces from the pattern sheet following the lines and markings for style 118 and your size.

burda style magazine patterns do not have seam allowance included.

Seam and hem allowance to be added:
Seams and edges 1.5 cm (5/8 in), hem 4 cm (1 5/8 ins).



With border, 150cm wide



Fold the fabric as shown in the pattern layout, right side facing in. Note pattern repeat. On the original fabric, lay the paper pattern pieces for the front and back skirt panels on the fabric so that border line marked on the pattern lies even with upper edge of fabric border.

Cutting Out

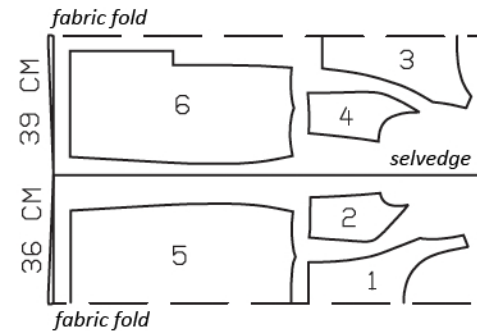
Jacquard:

- 1 centre front, on a fold 1x
- 2 side front 2x
- 3 centre back, on a fold 1x
- 4 side back 2x
- 5 front skirt panel, on a fold 1x
- 6 back skirt panel 2x

Lining: pieces 1 to 6.

Vilene Bias Tape/ stay tape: Iron to wrong side of neck edge, armhole edges, and zip slit edges.

Without Border, 150cm wide



Sewing

Stitch front and back section seams on bodice. Press seam allowances open. Stitch darts in skirt panel and press toward centre. Stitch centre back seam of skirt, leaving vent open. Press seam allowances of centre seam open and press facing on left slit edge to inside. Lay right underlap on left back skirt panel and above vent, press seam allowance of right back skirt panel to inside, tapering as you go, to avoid the need to clip it.

Stitch front skirt panel to front and stitch back skirt panel to back. Press seam allowances up.

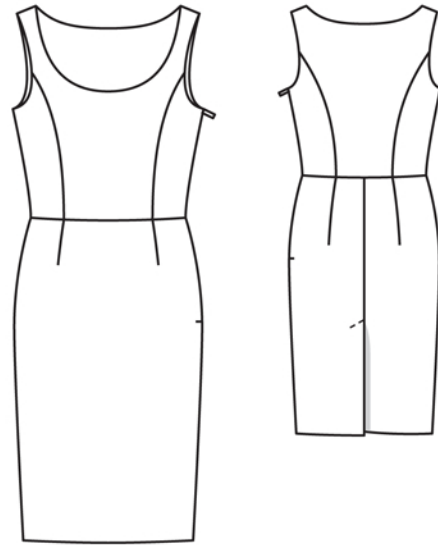
Stitch lining pieces together as for main fabric.

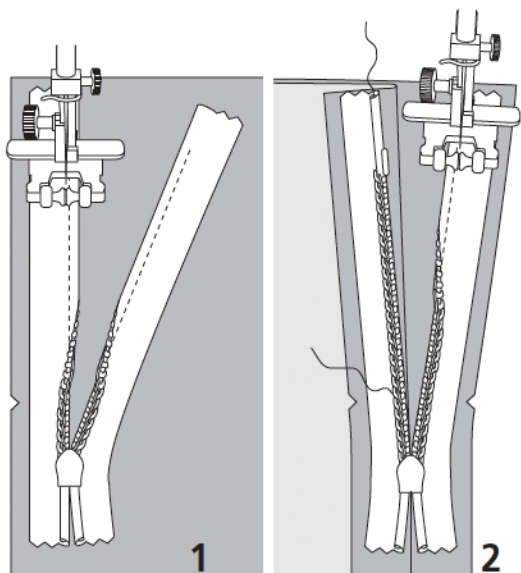
Neck and armhole edges, shoulder seams: Press allowances on shoulder seam edges of lining pieces to wrong side. Pin lining pieces to front and back, right sides facing. Stitch along neck edge and armhole edges. Trim seam allowances. Turn lining to inside. Stitch shoulder seams. Press seam allowances open and slide under lining edges. Sew shoulder edges of lining together by hand.

At armhole edges, turn lining up again. Sew invisible zip to left slit edges, see the "Helpful Hint" on next page. Stitch left side seam from lower edge to zip. Stitch left side seam of lining. Stitch right side seam of main fabric and lining as continuous seam. Turn lining to inside again, turn in, and sew to zip tapes.

At vent, open left facing again. Narrowly hem vertical edge of underlap on right back skirt panel. Press hem allowance to inside and sew in place by hand. Sew facing to hem allowance. Topstitch left back diagonally as marked, catching underlap.

Turn in hem allowance of lining and stitch so that lining is 2 cm (3/4 in) shorter than dress. At the vent, trim away a generous part of lining, rounding off top corners. Hem edges narrowly.





These special zippers come in various lengths. The zipper should be at least 2 cm (3/4 in) longer than the slit. It is sewn in place before the seam below the slit is stitched. A special presser foot is required to sew the zipper in place.

Sewing the zipper in place:

Open the zipper and push the coil back with your thumbnail to reveal the seam marking between the tape and the coil. Place the open zipper right side down on the right fabric side of one slit edge.

In order to stitch the zipper in place exactly along the marked seam line, you must first calculate the distance between the tape edge and the fabric edge as follows: width of seam allowance minus 1 cm (3/8 in) tape width = distance from edge of fabric. This will yield a value of 5 mm (3/16 in) if the width of the seam allowance is 1.5 cm (5/8 in).

Pin the top end of the zipper tape in place, the calculated distance from the edge of the fabric. The bottom end of the zipper will extend past the marked end of the slit. Place the presser foot on the zipper so that the coil is in the notch to the right of the needle (1). Stitch zipper in place, from the top to the marked end of the slit. Close zipper.

Place the other zipper tape face down on the opposite slit edge and pin in place at the top. Open zipper again. Place the presser foot on the top end of the zipper so that the coil is in the notch to the left of the needle (2). Sew the zipper in place, from the top to the end of the slit. Close zipper.

Now stitch the seam below the zipper, from bottom to top. Turn the loose lower end of the zipper out of the way, over the seam allowance. Stitch as close as possible to the last stitches of the zipper seams. Trim away excess zipper and bind the end with a scrap of fabric.

Additional Information:

Burda patterns do not include seam and hem allowances. We recommend adding 1-2 cm (3/8 - 3/4 inch) for seams and 2-5 cm (3/4 - 2 inch/es) for hems. Refer to your specific pattern instructions for exact measurements.

The fabric requirements are based on the fabric used for the original designs. These amounts will change if you use fabric of a different width. The pattern of the fabric determines whether all the pieces must be cut in the same direction or whether some can be reversed to save fabric.

The cutting layout printed with the instructions shows the best way to place the pattern pieces on our original fabric. Fold the fabric double with the right side facing in. The fabric then has a fold edge and a selvedge edge. When cutting from a single fabric layer, the right side should face up.

Pattern pieces which are shown in the cutting layout with broken outlines should be pinned to the fabric with their printed side facing down.

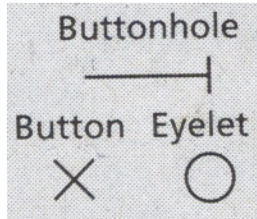
Grey shaded areas in the cutting layout indicate which pieces are to be interfaced.

Transfer the pattern piece lines to the wrong side of your fabric with burda dressmaker's carbon paper. Hand-baste along lines (e.g. for pockets or centre front) to make them visible on the right side of the fabric.

Key Symbols:

Seam numbers

show where pattern pieces must be sewn together. Match pieces with the same numbers.



Seam marks

on long seams. Match the small symbols to one another.



Presser foot is the symbol for seam and top-stitching lines.



Scissors

indicate edges to be cut without seam allowances and also slash lines, e.g. pocket openings.



Pleat symbol

Fold pleat in direction of arrow.



Placket/slit mark

Indicates beginning/end of placket/slit.



Gather
Ease
Stretch

