

115 Dress

Burda sizes 34, 36, 38, 40, 42

Length of dress from waist 118cm

Materials

Duchesse,
width: 135 cm (53 ins)
length: 4.80 – 4.85 – 4.90 – 4.95 – 5.00 m
(5 1/4 – 5 3/8 – 5 3/8 – 5 1/2 – 5 1/2 yds).

Soft dotted tulle,
width: 150 cm (59 ins)
length: 11.70 m (12 7/8 yds) for all sizes.

Lining,
width: 140 cm (55 ins)
length: 4.55 – 4.60 – 4.65 – 4.70 – 4.80 m
(5 1/8 – 5 1/8 – 5 1/4 – 5 1/4 – 5 1/4 yds).

Interfacing.

Satin ribbon for belt, 2.5 cm (1 in) wide and 4.00 m (4 3/8 yds) long.

Boning tape, 8 mm (a generous 1/4 in) wide and 0.85 m (1 yd) long.

1 invisible zip, 40 cm (16 ins) long.

Recommended fabrics: Soft tulle combined with duchesse.

Preparations

Print the pattern out on letter or A4 sized paper. It is **very important** to not scale the document. Your pattern will print on multiple pages, which you will then tile together. Arrange the sheets on a large, hard and flat surface matching up the numbers and letters (i.e. 6A to 6A). Cut or fold one of the sides and match the edge to its corresponding side. Then, tape down in place so paper is secure.

Trace the pattern pieces from the pattern sheet following the lines and markings for style 115 and your size.

burda style magazine patterns do not have seam allowance included. To be added:

Seams, edges, and hem 1.5 cm (5/8 in); no allowance on lower edge of tulle skirt panel.

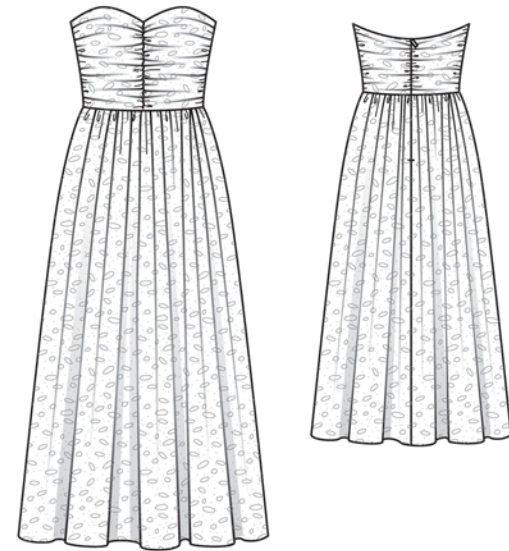
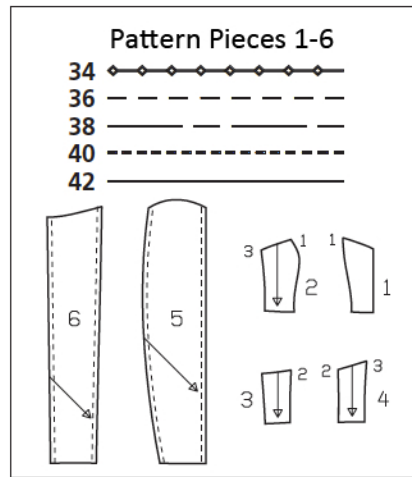


Diagram:

Follow the diagram to make a full-sized pattern piece for the skirt panel (a) as follows: On a large sheet of wrapping paper – the upper edge and the right edge must form a right angle – stretch a thread from the upper right corner to mark the radius (R) for the waist edge of skirt panel and the radius (R1) for the hem edge. Or measure the length of the skirt panel down from the waist edge at several points and then connect the points in an even curve to mark the hem edge.

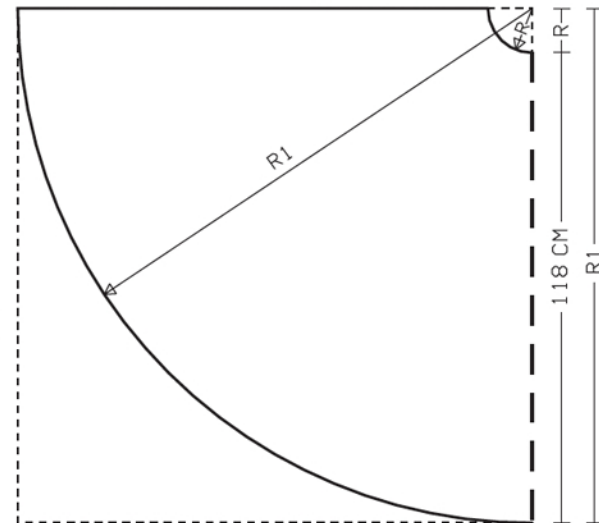
Diagram – skirt panel

Radius for waist edge (R)

Size 34: 10.5 cm
Size 36: 11.1 cm
Size 38: 11.8 cm
Size 40: 12.4 cm
Size 42: 13.1 cm

Radius for hem edge (R 1)

Size 34: 128,5 cm,
Size 36: 129,1 cm
Size 38: 129,8 cm
Size 40: 130.4 cm
Size 42: 131.1 cm



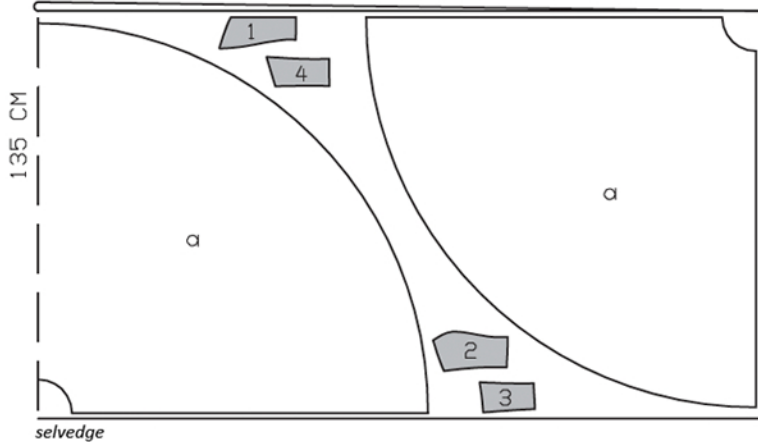
Cutting Out

Duchesse:

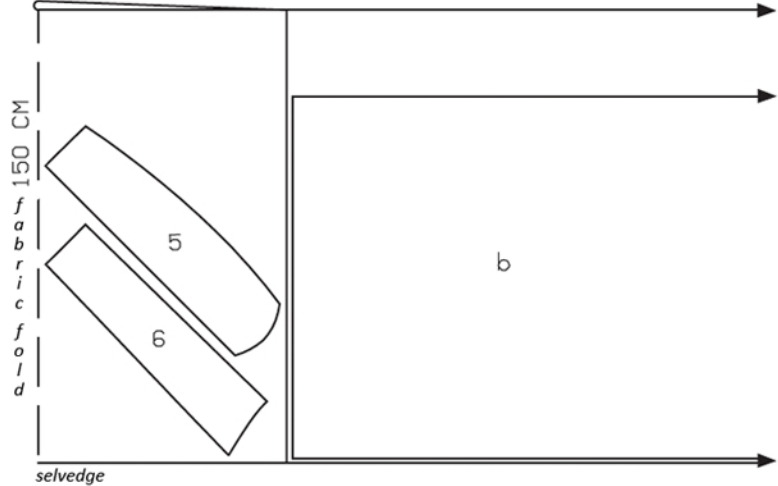
1 centre front 2x
2 side front 2x
3 centre back 2x
4 side back 2x

a) front skirt panel from diagram 1x, on a fold,
a) back skirt panel from diagram 2x.

Duchesse, 135cm wide
selvedge



Tulle, 150cm wide
selvedge



Fold the fabric as shown in the pattern layout, right side facing in.

Cutting Out Continued...

Tulle:

- 5 front draped piece 2x
- 6 back draped piece 2x

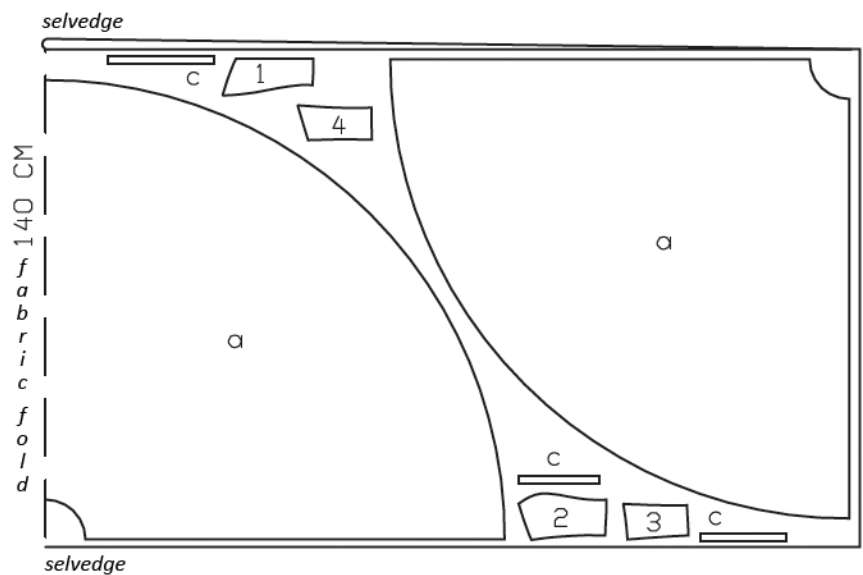
b) overskirt panel, 10.00 m (11 yds) wide, 120 cm (47 1/4 ins) long (incl. allowances).

Lining: pieces 1 to 4 and piece a.

c) facing strip for casings for boning, 2 pieces, each 30 cm (12 ins) long, 2 pieces, each 23 cm (9 1/8 ins) long, and 2 pieces, each 21 cm (8 3/8 ins) long, all 2 cm (3/4 in) wide (incl. allowances).

Interfacing: See shaded area on pattern layout.

Lining, 140cm wide
selvedge



Sewing

Stitch front and back section seams on bodice. Press seam allowances open. Lay facing strips for boning casings on inside, over seam allowances of section seams. Stitch strips to seam allowance, 5 mm (3/16 in) from seams.

Gather lengthwise edges of draped pieces as given on pattern, at centre front gathering to 21 – 21.5 – 22 – 22.5 – 23 cm (8 3/8 – 8 1/2 – 8 3/4 – 9 – 9 1/8 ins). Distribute gathering evenly. Baste draped pieces to corresponding front and back pieces, with wrong side facing right side. The draped pieces should lie taut over each corresponding piece.

Stitch centre front seam of bodice, beginning at upper edge, exactly at marked neck edge. Stitch side seams of bodice. Press seam allowances open. Lay facing strips for boning casings on inside, over seam allowances of side seams. Stitch strips to seam allowances, 5 mm (3/16 in) from seams.

Stitch side seams on skirt panels. For the zip, measure and mark 20 cm (8 ins) down on back skirt edges, beginning at upper edge. Gather upper edge of overskirt panel to 66 – 69 – 73 – 79 – 82 cm (26 – 27 1/4 – 28 3/4 – 31 1/4 – 32 1/2 ins). Lay overskirt on skirt, with wrong side facing right side. Baste upper edges together, turning in back edges of overskirt panel.

Sewing Continued...

Stitch skirt to bodice. Press seam allowances up.

Sew invisible zip to back edges, see the "Helpful Hint" on next page. Stitch centre back seam from lower edge to zip. Stitch centre back seam of overskirt panel, leaving slit open.

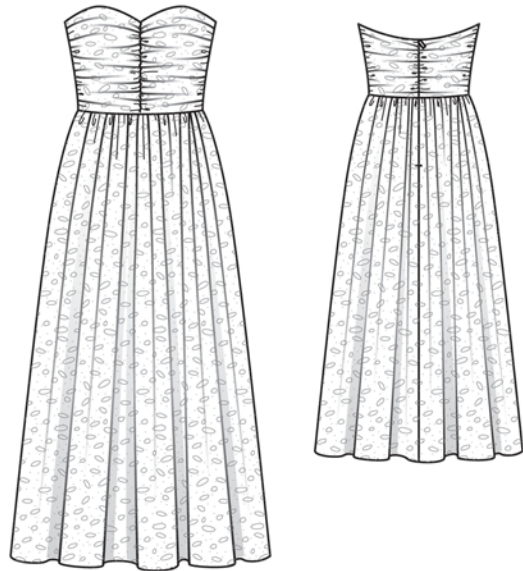
Cut boning tape to the length of the stitched casings, minus 5 mm (3/16 in) and insert into casings.

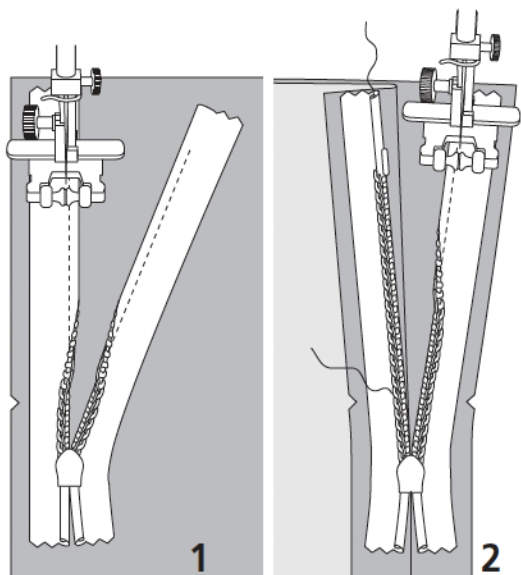
Stitch seams of bodice lining. Stitch side seams of skirt lining. Stitch centre back seam of skirt lining, leaving a slit, 22 cm (8 3/4 ins) long, at the top. Stitch skirt lining to bodice lining. Press seam allowances up.

Pin lining to neck edge of dress, right sides facing. At zip slit, turn lining back, approx. 5 mm (3/16 in) before slit edge and pin to upper edge. Turn allowances on slit edges of dress out over lining and pin to neck edge. Stitch along neck edge. Trim seam allowances. Turn allowances on slit edges to inside. Turn lining up and stitch to seam allowances, as far as possible, close to seam. Turn lining to inside and sew to zip tapes.

Finish hem edge of duchesse skirt with closely spaced zigzag stitching: Press allowance to wrong fabric side. Work from right side of fabric to stitch along fold edge with closely spaced zigzag stitching. On inside, trim allowance close to stitching. Hem skirt lining narrowly so that it is 1 cm (3/8 in) shorter than dress.

Tie satin ribbon around the waist, as a belt. Trim ribbon ends at a slant.





These special zippers come in various lengths. The zipper should be at least 2 cm (3/4 in) longer than the slit. It is sewn in place before the seam below the slit is stitched. A special presser foot is required to sew the zipper in place.

Sewing the zipper in place:

Open the zipper and push the coil back with your thumbnail to reveal the seam marking between the tape and the coil. Place the open zipper right side down on the right fabric side of one slit edge.

In order to stitch the zipper in place exactly along the marked seam line, you must first calculate the distance between the tape edge and the fabric edge as follows: width of seam allowance minus 1 cm (3/8 in) tape width = distance from edge of fabric. This will yield a value of 5 mm (3/16 in) if the width of the seam allowance is 1.5 cm (5/8 in).

Pin the top end of the zipper tape in place, the calculated distance from the edge of the fabric. The bottom end of the zipper will extend past the marked end of the slit. Place the presser foot on the zipper so that the coil is in the notch to the right of the needle (1). Stitch zipper in place, from the top to the marked end of the slit. Close zipper.

Place the other zipper tape face down on the opposite slit edge and pin in place at the top. Open zipper again. Place the presser foot on the top end of the zipper so that the coil is in the notch to the left of the needle (2). Sew the zipper in place, from the top to the end of the slit. Close zipper.

Now stitch the seam below the zipper, from bottom to top. Turn the loose lower end of the zipper out of the way, over the seam allowance. Stitch as close as possible to the last stitches of the zipper seams. Trim away excess zipper and bind the end with a scrap of fabric.

Additional Information:

Burda patterns do not include seam and hem allowances. We recommend adding 1-2 cm (3/8 - 3/4 inch) for seams and 2-5 cm (3/4 - 2 inch/es) for hems. Refer to your specific pattern instructions for exact measurements.

The fabric requirements are based on the fabric used for the original designs. These amounts will change if you use fabric of a different width. The pattern of the fabric determines whether all the pieces must be cut in the same direction or whether some can be reversed to save fabric.

The cutting layout printed with the instructions shows the best way to place the pattern pieces on our original fabric. Fold the fabric double with the right side facing in. The fabric then has a fold edge and a selvedge edge. When cutting from a single fabric layer, the right side should face up.

Pattern pieces which are shown in the cutting layout with broken outlines should be pinned to the fabric with their printed side facing down.

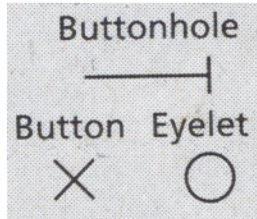
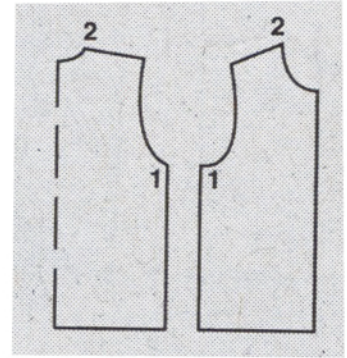
Grey shaded areas in the cutting layout indicate which pieces are to be interfaced.

Transfer the pattern piece lines to the wrong side of your fabric with burda dressmaker's carbon paper. Hand-baste along lines (e.g. for pockets or centre front) to make them visible on the right side of the fabric.

Key Symbols:

Seam numbers

show where pattern pieces must be sewn together. Match pieces with the same numbers.

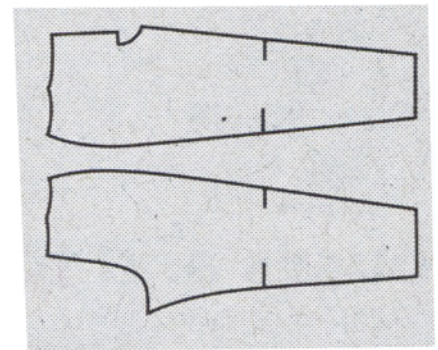


Seam marks

on long seams. Match the small symbols to one another.



Presser foot is the symbol for seam and top-stitching lines.



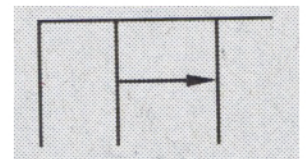
Scissors

indicate edges to be cut without seam allowances and also slash lines, e.g. pocket openings.



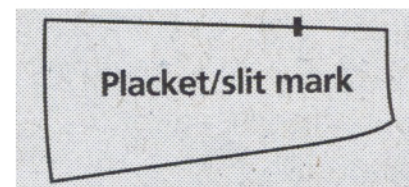
Pleat symbol

Fold pleat in direction of arrow.



Placket/slit mark

Indicates beginning/ end of placket/slit.



Gather
Ease
Stretch

