

### 132 Dress

Burda sizes 36, 38, 40, 42, 44

Length from waist 114 cm (45 ins)

### Materials

Silk crêpe,

width: 135 cm (53 ins)

length: 4.20 – 4.30 – 4.50 – 4.60 – 4.70 m  
(4 5/8 – 4 3/4 – 5 – 5 1/8 – 5 1/4 yds).

Lining,

width: 140 cm (55 ins)

length: 2.90 – 3.00 – 3.05 – 3.10 – 3.15 m  
(3 1/4 – 3 3/8 – 3 1/2 – 3 1/2 – 3 5/8 yds).

Vilene Bias Tape/ stay tape.

1 invisible zip, 60 cm (24 ins) long.

“Gems” in various shapes and sizes to sew on.

Small, round beads to sew on.

Recommended fabrics: Softly draping dress fabrics.

### Preparations

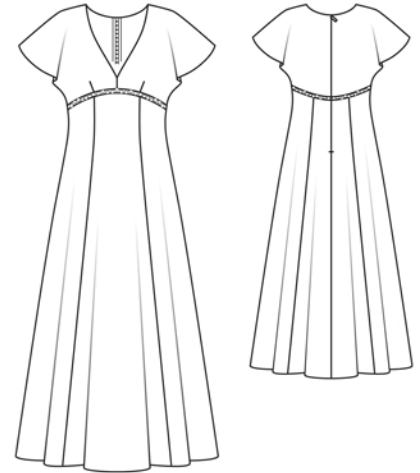
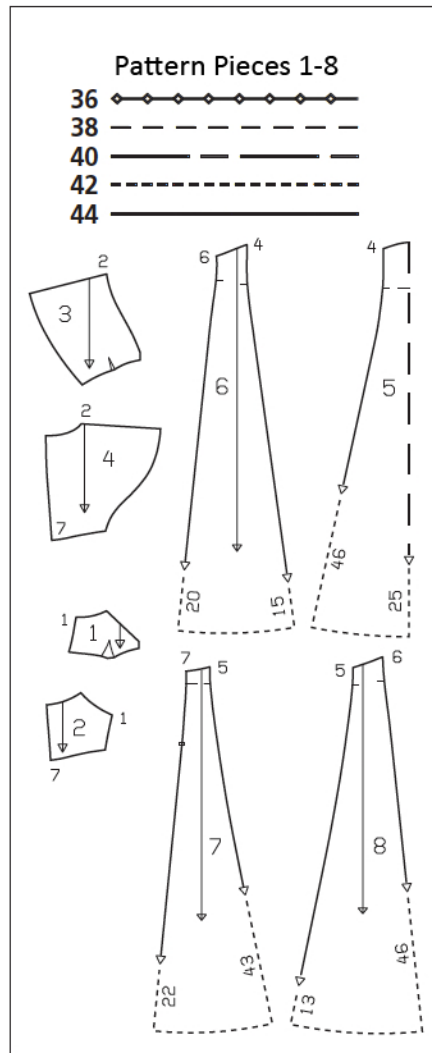
Print the pattern out on letter or A4 sized paper. It is **very important** to not scale the document. Your pattern will print on multiple pages, which you will then tile together. Arrange the sheets on a large, hard and flat surface matching up the numbers and letters (i.e. 6A to 6A). Cut or fold one of the sides and match the edge to its corresponding side. Then, tape down in place so paper is secure.

Trace the pattern pieces from the pattern sheet following the lines and markings for style 132 and your size.

**burda style magazine patterns do not have seam allowance included.**

Seam and hem allowance to be added:

Seams and edges 1.5 cm (5/8 in), hem 3 cm (1 1/4 ins), lining 1.5 cm (5/8 in).



### Cutting Out

Crêpe:

- 1 inside front 2x
- 2 inside back 2x
- 3 front with integrated sleeve 4x
- 4 back with integrated sleeve 4x

5 centre front skirt panel, on a fold 1x

- 6 side front skirt panel 2x
- 7 centre back skirt panel 2x
- 8 side back skirt panel 2x

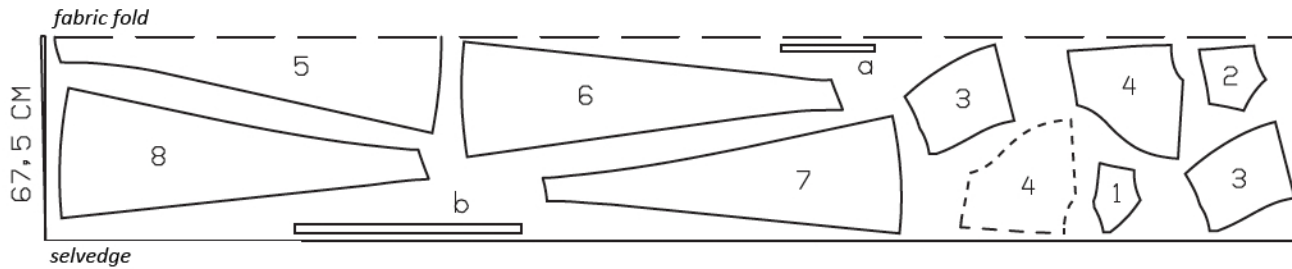
**Draft the following pieces NOT included in the pattern:**

- a) 2 straps, 31 – 32 – 32 – 33 – 33 cm (12 1/4 – 12 3/4 – 12 3/4 – 13 – 13 ins) long, 2 cm (3/4 in) wide, finished width 1 cm (3/8 in),
- b) band, 75 – 79 – 83 – 87 – 91 cm (29 3/4 – 31 1/4 – 32 3/4 – 34 1/4 – 36 ins) long, 3 cm (1 1/4 ins) wide, finished width 1.5 cm (5/8 in).

Lining: pieces 1, 2, and 5 to 8.

Vilene Bias Tape/ stay tape: Iron to wrong side of front shoulder seam edges, back zip slit edges, and neck edges.

Cutting layouts on next page.



Cut from a double layer of fabric, right side facing in.

### Sewing

Stitch centre seams on inside fronts of main fabric and lining, beginning at upper edge, exactly at marked neck edge. Stitch front darts. Trim dart allowances to 1 cm (3/8 in) and press open, pressing points of darts flat. Stitch side seams on inside pieces (seam number 1). Pin lining pieces right sides together with pieces of main fabric. Stitch along neck and armhole edges, beginning and ending on back pieces, 3 cm (1 1/4 ins) from marked back edge. Trim seam allowances. Turn lining to inside. Turn back lining edges und and pin in place.

Fold straps lengthwise, right side facing in. Stitch along long edges and across one end of each. Turn straps right side out. Sew seamed front strap ends to inner side of front corners of neck edge. Pin back strap ends under back corners of neck edge.

Lay pairs of front pieces with sleeves together, right sides facing. Stitch centre front seam, beginning exactly at marked point of neck edge. Press seam allowances open. Stitch darts and press toward centre. Stitch shoulder seams (seam number 29). Press seam allowances open. Lay front and back pieces (outside and inside pieces) right sides together. Stitch along neck and armhole edges. Trim seam allowances. To turn right side out, pull backs through "shoulder tunnels". After turning, press edges. Pin lower edges and back edges.

Lay front and back pieces on inside piece and baste lower edges together, not catching lining and matching sleeve edges to side seams. Baste back edges together.

Stitch section seams and side seams on skirt. Stitch skirt to bodice. Press seam allowances down.

Sew invisible zip to back slit edges, see the "Helpful Hint" on next page. Leave top ends of zip tapes loose. Stitch centre back seam from lower edge to zip. Turn in top ends of zip tapes and sew to neck edge, together with seam allowances.

Stitch seams on skirt lining, leaving slit open for zip. Remove pins from lining. Stitch skirt lining to bodice. Turn lining edges under and sew to zip tapes.

Try on dress. Sew back ends of straps in place.

Fold band in half, right side facing in. Stitch long edges together. Press seam allowances open, over the edge of your ironing board. Turn band right side out, place seam along centre, and press edges. Sew gems and beads to outer side of band. Sew band to dress, along skirt attachment seam so that upper band edge meets seam. Turn band ends under.

Press hem allowance to inside. Sew hem in place by hand. Hem lining so that it is approx. 1 cm (3/8 in) shorter than the dress.

## Additional Information:

**Burda patterns do not include seam and hem allowances.** We recommend adding 1-2 cm (3/8 - 3/4 inch) for seams and 2-5 cm (3/4 - 2 inch/es) for hems. Refer to your specific pattern instructions for exact measurements.

The fabric requirements are based on the fabric used for the original designs. These amounts will change if you use fabric of a different width. The pattern of the fabric determines whether all the pieces must be cut in the same direction or whether some can be reversed to save fabric.

The cutting layout printed with the instructions shows the best way to place the pattern pieces on our original fabric. Fold the fabric double with the right side facing in. The fabric then has a fold edge and a selvedge edge. When cutting from a single fabric layer, the right side should face up.

Pattern pieces which are shown in the cutting layout with broken outlines should be pinned to the fabric with their printed side facing down.

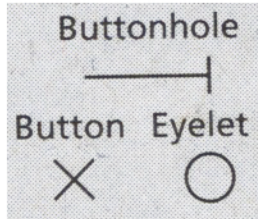
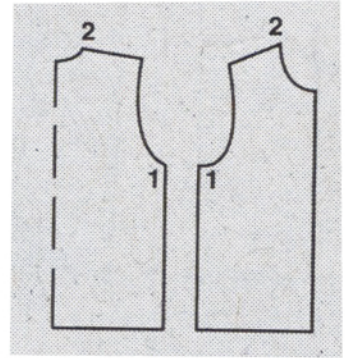
Grey shaded areas in the cutting layout indicate which pieces are to be interfaced.

Transfer the pattern piece lines to the wrong side of your fabric with burda dressmaker's carbon paper. Hand-baste along lines (e.g. for pockets or centre front) to make them visible on the right side of the fabric.

## Key Symbols:

### Seam numbers

show where pattern pieces must be sewn together. Match pieces with the same numbers.



### Seam marks

on long seams. Match the small symbols to one another.



**Presser foot** is the symbol for seam and top-stitching lines.



### Scissors

indicate edges to be cut without seam allowances and also slash lines, e. g. pocket openings.



### Pleat symbol

Fold pleat in direction of arrow.



### Placket/slit mark

Indicates beginning/ end of placket/slit.



**Gather**  
**Ease**  
**Stretch**

