

129 Dress

and bandeau

Burda sizes 34, 36, 38, 40, 42

Length from waist 80 cm (31 1/2 ins)

Materials

Tulle with chiffon flowers,
width: 130 cm (51 ins) wide (measured without plain tulle edge)
length: 1.25 – 2.50 – 2.50 – 2.50 – 2.50 m
(1 1/2 – 2 3/4 – 2 3/4 – 2 3/4 – 2 3/4 yds).

Satin for bandeau,
width: 130 cm (51 ins)
length: 1.00 – 1.00 – 1.05 – 1.05 – 1.05 m
(1 1/8 – 1 1/8 – 1 1/4 – 1 1/4 – 1 1/4 yds).

Hook-and-loop tape, 2 cm (3/4 in) wide and 0.15 m (1/4 yd) long.

Various sew-on beads, gems and sequins as desired.

Recommended fabrics: Embroidered stretch fabrics and satin for the bandeau.

Preparations

Print the pattern out on letter or A4 sized paper. It is **very important** to not scale the document. Your pattern will print on multiple pages, which you will then tile together. Arrange the sheets on a large, hard and flat surface matching up the numbers and letters (i.e. 6A to 6A). Cut or fold one of the sides and match the edge to its corresponding side. Then, tape down in place so paper is secure.

Trace the pattern pieces from the pattern sheet following the lines and markings for style 129 and your size.

burda style magazine patterns do not have seam allowance included.

Seam and hem allowance to be added:
Seams and edges 1.5 cm (5/8 in), side seams for size 34 only 1 cm (3/8 in), no allowances on lower edges of front and back.

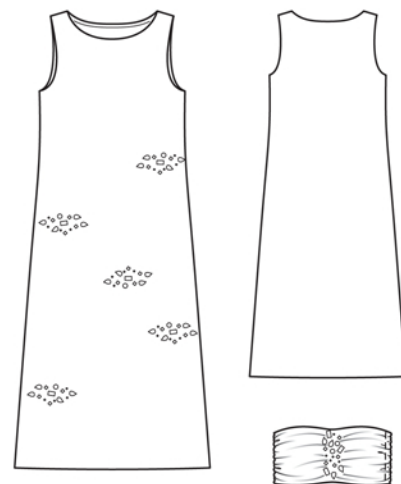
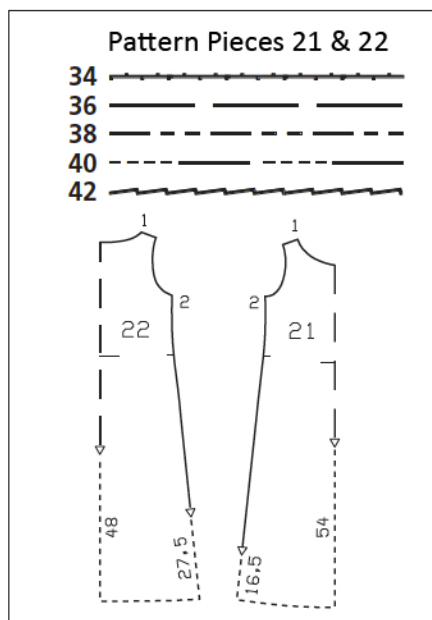
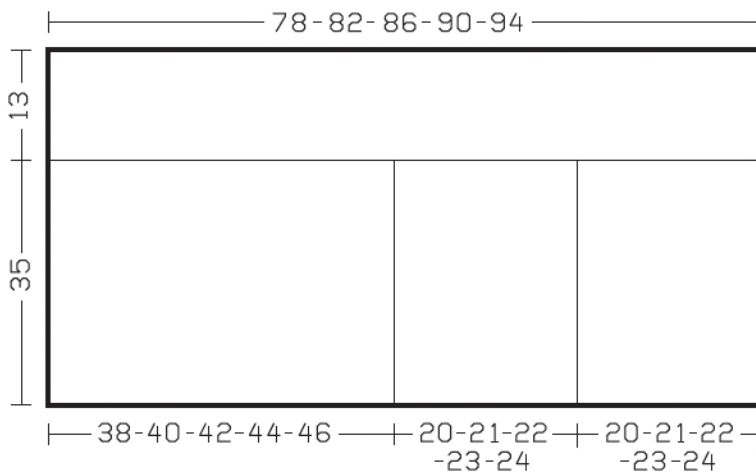


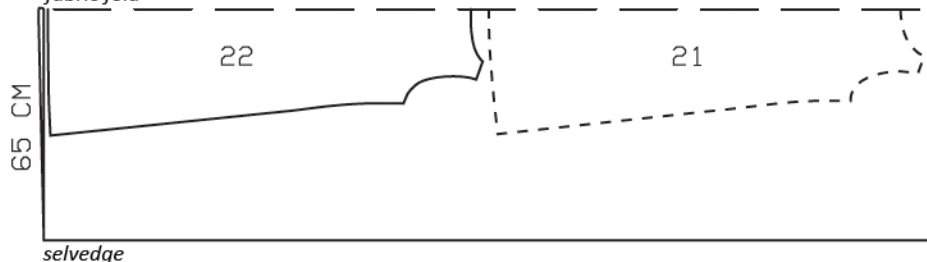
Diagram – bandeau
Measurements in cm



Right side faces in on a double layer of fabric; right side faces up on a single layer.

Size 36-42

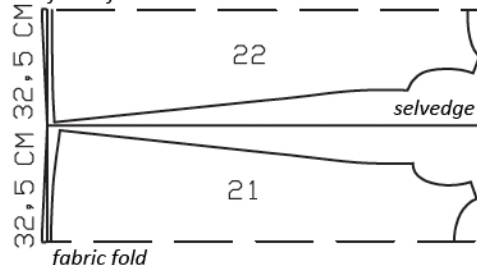
fabric fold



Tulle, 130cm wide

Size 34

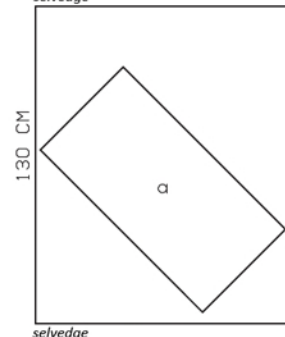
fabric fold



Satin, 130cm wide

Sizes 34-42

selvedge



Cutting Out

Tulle with chiffon flowers:

21 front, on a fold 1x

22 back, on a fold 1x

Cut from plain edge of tulle: facing strip for neck edge, 1 piece, 60 – 61 – 62 – 64 – 65 cm (23 3/4 – 24 – 24 1/2 – 25 1/4 – 25 3/4 ins) long; and facing strip for armholes, 2 pieces, each 44 – 45 – 47 – 49 – 50 cm (17 1/4 – 17 3/4 – 18 1/2 – 19 1/4 – 19 3/4 ins) long, all 4 cm (1 5/8 ins) wide (incl. allowances).

Satin:

a) bandeau, cut on bias 78 – 82 – 86 – 90 – 94 cm (30 3/4 – 32 1/2 – 34 – 35 1/2 – 37 ins) long, 48 cm (19 ins) wide.

Sewing

Dress

Stitch shoulder seams. Press seam allowances open.

Neck edge: Fold facing strip lengthwise, with right side facing out, and press. Pin folded facing strip to neck edge so that fold edge of strip lies on garment piece, 1 cm (3/8 in) past seam line. Begin at left shoulder seam and turn in start and end of facing strip. Stitch along neck edge. Trim seam allowances. Turn facing strip to inside. Sew inside edge of facing strip in place by hand.

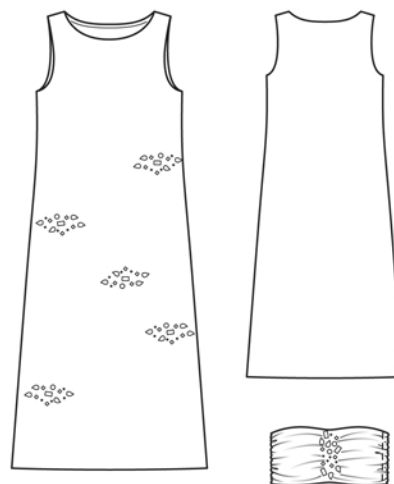
Face armholes with facing strips as described for neck edge.

Stitch side seams. Press seam allowances open. Sew top and bottom ends of seam allowances in place by hand.

Sew beads, gems, and sequins to some of the chiffon flowers on the front.

Bandeau

Following the diagram, hand baste along fold line, side gathering line, and centre front to mark these lines. Gather wider outer side of bandeau, below fold line, on narrow edges and to each side of side gathering line, each to a length of 13



cm (5 1/4 ins). Knot gathering threads securely. Fold bandeau on marked fold line, with right side facing in. Stitch edges together, leaving a section of seam open on long edge, for turning. Turn bandeau right side out. Sew opening closed. On the side, between gathering threads, stitch outer side to inner side. Gather fabric at centre front and tack to back with a few stitches by hand. Sew beads, gems and sequins over gathering. To fasten, sew loop half of hook-and-loop tape to wrong side of narrow front edge and sew hook side of tape to narrow back edge.

Additional Information:

Burda patterns do not include seam and hem allowances. We recommend adding 1-2 cm (3/8 - 3/4 inch) for seams and 2-5 cm (3/4 - 2 inch/es) for hems. Refer to your specific pattern instructions for exact measurements.

The fabric requirements are based on the fabric used for the original designs. These amounts will change if you use fabric of a different width. The pattern of the fabric determines whether all the pieces must be cut in the same direction or whether some can be reversed to save fabric.

The cutting layout printed with the instructions shows the best way to place the pattern pieces on our original fabric. Fold the fabric double with the right side facing in. The fabric then has a fold edge and a selvedge edge. When cutting from a single fabric layer, the right side should face up.

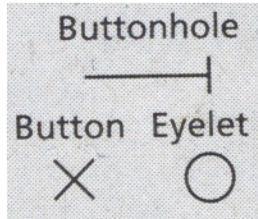
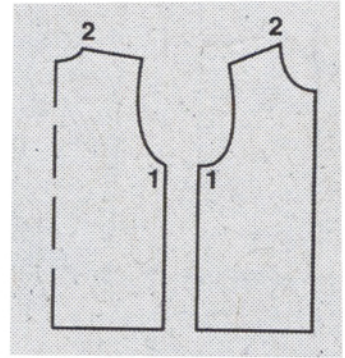
Pattern pieces which are shown in the cutting layout with broken outlines should be pinned to the fabric with their printed side facing down.

Grey shaded areas in the cutting layout indicate which pieces are to be interfaced.

Transfer the pattern piece lines to the wrong side of your fabric with burda dressmaker's carbon paper. Hand-baste along lines (e.g. for pockets or centre front) to make them visible on the right side of the fabric.

Key Symbols:

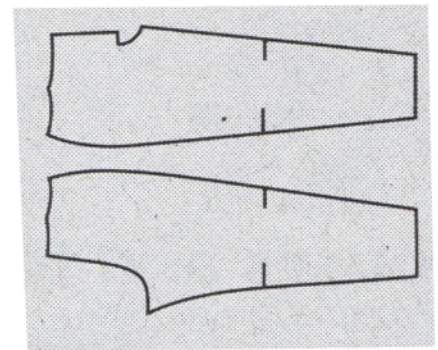
Seam numbers
show where pattern pieces must be sewn together. Match pieces with the same numbers.



Seam marks
on long seams. Match the small symbols to one another.



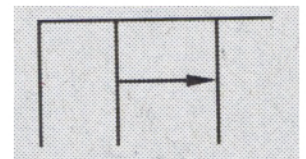
Presser foot
is the symbol for seam and top-stitching lines.



Scissors
indicate edges to be cut without seam allowances and also slash lines, e.g. pocket openings.



Pleat symbol
Fold pleat in direction of arrow.



Placket/slit mark
Indicates beginning/end of placket/slit.

