

130 Dress

and bandeau

Burda sizes 34, 36, 38, 40, 42

Length from waist 103 cm (40 3/4 ins)

Materials

Note: This style is made from 150 cm (59 in) wide lace fabric with two different scalloped edges. The scalloped edges of the fabric are used for the lower edges of the dress (large scallops for the front and back and small scallops for the sleeves).
Tip: If your fabric is not as wide, you can cut the dress lengthwise and sew the scalloped edges to the hem edge (appliqué).

Tulle lace with two scalloped edges (original fabric has two different scalloped edges – large and small scallops),
width: 150 cm (59 ins)
length: 2.15 – 2.15 – 2.25 – 2.25 – 2.25 m
(2 1/2 – 2 1/2 – 2 5/8 – 2 5/8 – 2 5/8 yds).

Stretch satin, with widthwise stretch, for lining,
width: 135 cm (53 ins)
length: 3.35 – 3.35 – 3.40 – 3.45 – 3.45 m
(3 3/4 – 3 3/4 – 3 3/4 – 3 7/8 – 3 7/8 yds).

Hook-and-loop tape, 2 cm (3/4 in) wide and 0.15 m (1/4 yd) long.

Recommended fabrics: Tulle lace with a scalloped edge and stretch satin for lining.

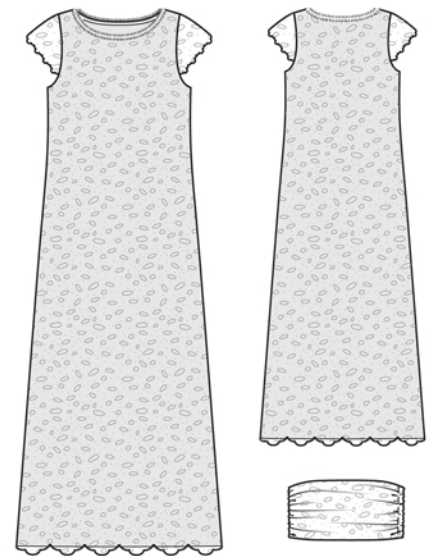
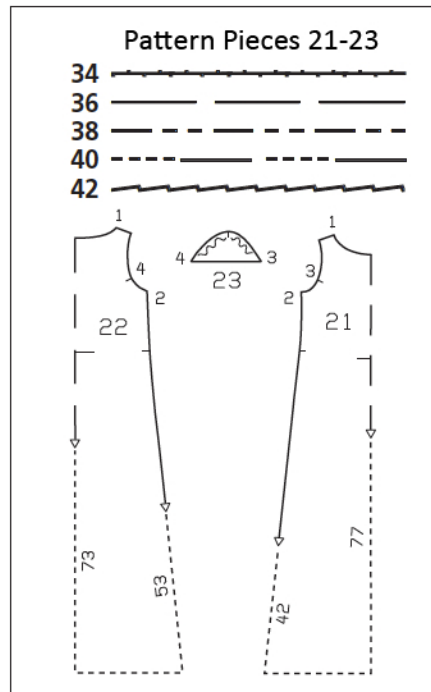
Preparations

Print the pattern out on letter or A4 sized paper. It is **very important** to not scale the document. Your pattern will print on multiple pages, which you will then tile together. Arrange the sheets on a large, hard and flat surface matching up the numbers and letters (i.e. 6A to 6A). Cut or fold one of the sides and match the edge to its corresponding side. Then, tape down in place so paper is secure.

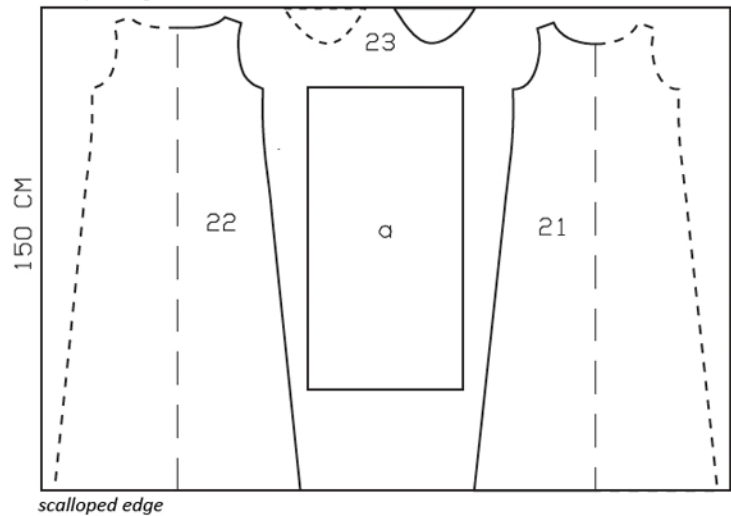
Trace the pattern pieces from the pattern sheet following the lines and markings for style 130 and your size.

burda style magazine patterns do not have seam allowance included. To be added:

Lace fabric: seams and edges 1 cm (3/8 in). Cut lining pieces with 1.5 cm (5/8 in) wide seam and hem allowances.

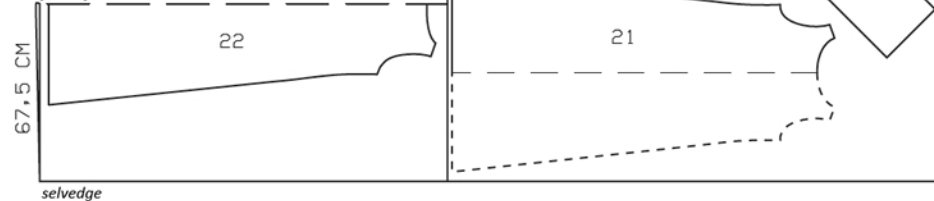


Tulle Lace, 150cm wide scalloped edge



Right side faces in on a double layer of fabric; right side faces up on a single layer. Cut right and left sleeves as opposites. On lace fabric, make sure that scallops match at side seams.

Stretch Satin, 135cm wide fabric fold



Cutting Out

Tulle lace fabric:

21 front, on a fold 1x

22 back, on a fold 1x

23 sleeve 2x

Draft the following pieces NOT included in the pattern:

a) draped piece for bandeau, 78 – 82 – 86 – 90 – 94 cm (30 3/4 – 32 1/2 – 34 – 35 1/2 – 37 ins) long, 50 cm (20 ins) wide, finished width 25 cm (10 ins).

Place lower edges of front and back on large scalloped edge of the lace and place lower sleeve edge on small scalloped edge of the lace. When using the original fabric, trim away straight edge with large scallops. This can then be used as trim at the neck edge.

Satin (lining):

pieces 21 and 22, cut on lengthwise grain.

b) bandeau, cut on bias, 78 – 82 – 86 – 90 – 94 cm (30 3/4 – 32 1/2 – 34 – 35 1/2 – 37 ins) long, 26 cm (10 1/2 ins) wide, finished width 13 cm (5 1/4 ins),

c) bias strip for neck edge, 60 – 61 – 62 – 64 – 65 cm (23 3/4 – 24 – 24 1/2 – 25 1/4 – 25 3/4 ins) long, 4 cm (15/8 ins) wide (incl. allowances),

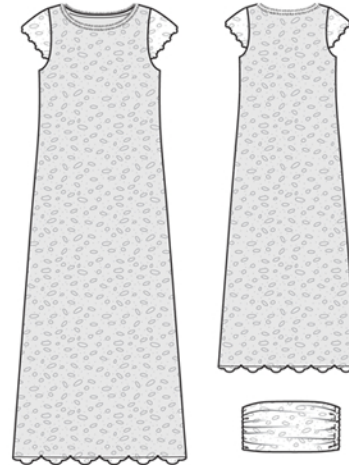
d) 2 bias strips for armholes, 44 – 45 – 47 – 49 – 50 cm (17 1/4 – 17 3/4 – 18 1/2 – 19 1/4 – 19 3/4 ins) long, 4 cm (1 5/8 ins) wide (incl. allowances).

Sewing

Dress

Sew side seams and shoulder seams as french seams (double seam): First lay the fabric pieces together, wrong sides facing, and stitch the 1 cm (3/8 in) wide seam allowances together, 4 mm (a generous 1/8 in) from fabric edge. Press seam allowances open. Then lay the pieces together, right sides facing, with the seam exactly along the fold. Now stitch 6 mm (1/4 in) from fold edge, along marked seam line. Press seam allowances onto back.

Stitch side seams and shoulder seams of lining in the normal manner. Neaten seam allowances together and press onto back. Pull lining into



dress, with right side facing wrong side, and baste to neck and armhole edges.

Neck edge: Fold facing strip lengthwise, with right side facing out, and press. Pin folded facing strip to neck edge so that fold edge of strip lies on garment piece, 1 cm (3/8 in) past seam line. Begin at left shoulder seam and turn in start and end of facing strip. Stitch along neck edge. Trim seam allowances. Turn facing strip to inside. Sew inside edge of facing strip in place by hand.

Use the bias strip instead of facing strip. Sew the trimmed-off edge of the lace to the finished neck edge.

Ease sleeves and baste to armhole edges, right sides together, matching lower sleeve edges to markings on armholes. Fold bias strips for armholes in half lengthwise and press, right side facing out. Turn in one end of each strip. Pin folded strips to armhole edges (catching sleeves in between) so that fold edge of each strip lies on garment piece, 1 cm (3/8 in) past seam line and open end of strip overlaps turned-under end. Stitch along marked armhole edges. Trim seam allowances. Turn bias strips over seam allowances into armholes and stitch to seam allowances, next to seam. Turn bias strips to inside and sew to lining by hand.

Turn lining hem allowance to wrong side, turn raw edge under, and stitch in place, so that lining is 2 cm (3/4 in) shorter than dress.

Bandeau

Fold draped piece of lace fabric to half the width, with right side facing in. Stitch long edges together. Turn right side out and press seam edge. On draped piece, gather narrow edges and gather centre between narrow edges each to 13 cm (5 1/4 ins). Fold bandeau of satin lengthwise, right side facing in, and stitch long edges together. Turn right side out and press. Lay draped piece on satin bandeau. Stitch narrow edges together then turn right side out. Tack draped piece to bandeau, in several places, with stitches by hand. To fasten, sew loop half of hook-and-loop tape to wrong side of narrow front edge and sew hook side of tape to narrow back edge.

Additional Information:

Burda patterns do not include seam and hem allowances. We recommend adding 1-2 cm (3/8 - 3/4 inch) for seams and 2-5 cm (3/4 - 2 inch/es) for hems. Refer to your specific pattern instructions for exact measurements.

The fabric requirements are based on the fabric used for the original designs. These amounts will change if you use fabric of a different width. The pattern of the fabric determines whether all the pieces must be cut in the same direction or whether some can be reversed to save fabric.

The cutting layout printed with the instructions shows the best way to place the pattern pieces on our original fabric. Fold the fabric double with the right side facing in. The fabric then has a fold edge and a selvedge edge. When cutting from a single fabric layer, the right side should face up.

Pattern pieces which are shown in the cutting layout with broken outlines should be pinned to the fabric with their printed side facing down.

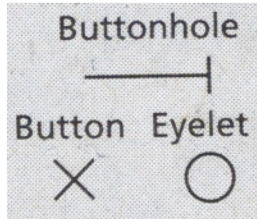
Grey shaded areas in the cutting layout indicate which pieces are to be interfaced.

Transfer the pattern piece lines to the wrong side of your fabric with burda dressmaker's carbon paper. Hand-baste along lines (e.g. for pockets or centre front) to make them visible on the right side of the fabric.

Key Symbols:

Seam numbers

show where pattern pieces must be sewn together. Match pieces with the same numbers.



Seam marks

on long seams. Match the small symbols to one another.



Presser foot is the symbol for seam and top-stitching lines.



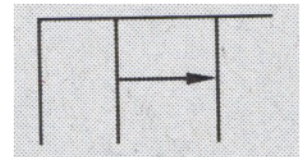
Scissors

indicate edges to be cut without seam allowances and also slash lines, e. g. pocket openings.



Pleat symbol

Fold pleat in direction of arrow.



Placket/slit mark

Indicates beginning/ end of placket/slit.



Gather
Ease
Stretch

