

124 Top

Burda sizes 36, 38, 40, 42, 44

Back length approx. 63 cm (25 ins)

Materials

Linen,
width: 150 cm (59 ins)
length: 1.35 – 1.35 – 1.40–1.40–1.40m (1 5/8 yds).

Interfacing.

14 small buttons.

Recommended fabrics: Blouse fabrics.

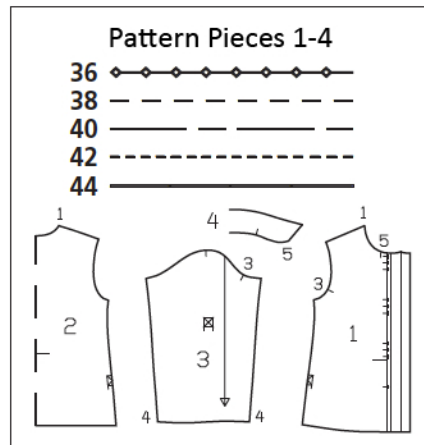
Preparations

Print the pattern out on letter or A4 sized paper. It is **very important** to not scale the document. Your pattern will print on multiple pages, which you will then tile together. Arrange the sheets on a large, hard and flat surface matching up the numbers and letters (i.e. 6A to 6A). Cut or fold one of the sides and match the edge to it's corresponding side. Then, tape down in place so paper is secure.

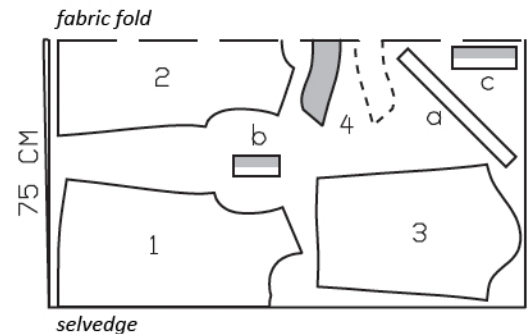
Trace the pattern pieces from the pattern sheet following the lines and markings for style 124 and your size. The buttonholes in piece 1 are marked for size 36. For sizes 38 – 44, move the top set of buttonholes up according to neck edge. The bottom buttonhole is the same for all sizes. Space the other sets of buttonholes evenly in between. The attachment lines for the tab on pieces 1 and 2 are marked for size 36. For the other sizes, move the markings according to the size lines.

burda style magazine patterns do not have seam allowance included.

Seam and hem allowance to be added:
Seams and edges 1.5 cm (5/8 in), hem and sleeve hems 2 cm (3/4 in), no allowance on long edge of front self-facing.



Cut from a double layer of fabric, right side facing in.



Cutting Out

- 1 front 2x
- 2 back, on a fold 1x
- 3 sleeve 2x
- 4 collar, on a fold 2x

a) bias strip for neck edge, 43 – 44 – 45 – 46 – 47 cm (17 – 17 1/4 – 17 3/4 – 18 1/8 – 18 1/2 ins) long, 4 cm (1 5/8 ins) wide (incl. allowances),

b) 2 sleeve tabs, 13 cm (5 1/4 ins) long, 6 cm (2 1/2 ins) wide, finished width 3 cm (1 1/4 ins),

c) 2 side tabs 18 cm (7 1/8 ins) long, 6 cm (2 1/2 ins) wide, finished width 3 cm (1 1/4 ins).

Interfacing: See shaded area on pattern layout. Iron interfacing to under-collar piece.

Sewing

Stitch shoulder seams. Trim seam allowances and press toward back.

Stitch sleeves to fronts and to back. Press seam allowances of sleeve attachment seams away from sleeves. Topstitch blouse 7 mm (1/4 in) from sleeve attachment seams.

Fold sleeve tabs lengthwise, right side facing in. Trim one end of each to a point. Stitch along lengthwise edges and pointed ends. Turn tabs right side out. Topstitch tabs close to edges. Work a buttonhole in each pointed end. On open tab ends, turn edges to inside. Pin tabs to inside of sleeves as marked. Working from the outer side, stitch tabs in place, stitching in a square.

Stitch side seams and sleeve seams as continuous seams. Press hem and sleeve hem allowances to inside, turn in, and stitch in place.

Fold front self-facings to inside on fold lines and press. Turn folded facings to outside and pin to neck edge.

Collar and neck edge: Stitch collar pieces right sides together along outer edges. Trim seam allowances. Turn collar right side out and press. Topstitch 7 mm (1/4 in) from collar edges. Baste attachment edges of collar together to neck edge, from seam number 5. Fold bias strip for neck edge lengthwise and press, right side facing out. Pin folded bias strip to neck edge, over collar, so that fold edge of strip lies on garment piece, 1 cm (3/8 in) past seam line, and ends of strip lie on facings. Stitch along marked neck edge. Trim seam allowances. Turn bias strip up and stitch to seam allowances, close to seam. Turn bias strip and facings to inside. Press edges.

Sew facings to hem edge.

Sew side tabs as for sleeve tabs. Pin tabs to inside of blouse, over side seams. Working from the outer side, stitch tabs in place.

Work buttonholes in right front.



Additional Information:

Burda patterns do not include seam and hem allowances. We recommend adding 1-2 cm (3/8 - 3/4 inch) for seams and 2-5 cm (3/4 - 2 inch/es) for hems. Refer to your specific pattern instructions for exact measurements.

The fabric requirements are based on the fabric used for the original designs. These amounts will change if you use fabric of a different width. The pattern of the fabric determines whether all the pieces must be cut in the same direction or whether some can be reversed to save fabric.

The cutting layout printed with the instructions shows the best way to place the pattern pieces on our original fabric. Fold the fabric double with the right side facing in. The fabric then has a fold edge and a selvedge edge. When cutting from a single fabric layer, the right side should face up.

Pattern pieces which are shown in the cutting layout with broken outlines should be pinned to the fabric with their printed side facing down.

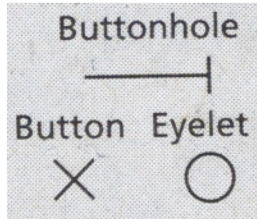
Grey shaded areas in the cutting layout indicate which pieces are to be interfaced.

Transfer the pattern piece lines to the wrong side of your fabric with burda dressmaker's carbon paper. Hand-baste along lines (e.g. for pockets or centre front) to make them visible on the right side of the fabric.

Key Symbols:

Seam numbers

show where pattern pieces must be sewn together. Match pieces with the same numbers.



Seam marks

on long seams. Match the small symbols to one another.



Presser foot is the symbol for seam and top-stitching lines.



Scissors

indicate edges to be cut without seam allowances and also slash lines, e.g. pocket openings.



Pleat symbol

Fold pleat in direction of arrow.



Placket/slit mark

Indicates beginning/ end of placket/slit.



Gather
Ease
Stretch

