

121 Skirt

Burda sizes 34, 36, 38, 40, 42

Skirt length 52 cm (20 1/2 ins)

Upper skirt edge is 2 cm (3/4 in) below waist

Materials

Linen,
width: 150 cm (59 ins)
length: 1.65 – 1.65 – 1.70 – 1.70 – 2.00 m
(1 7/8 – 1 7/8 – 1 7/8 – 1 7/8 – 2 1/4 yds).

Interfacing.

1 invisible zip, 22 cm (9 ins) long.

Recommended fabrics: Lightweight, softly draping skirt fabrics.

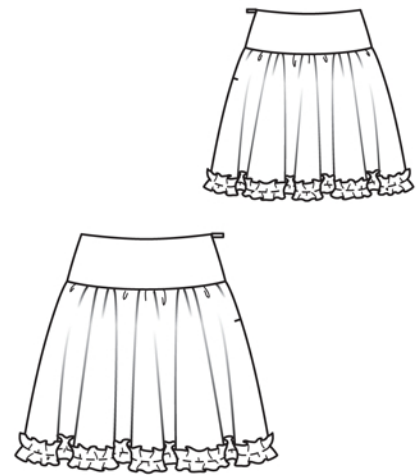
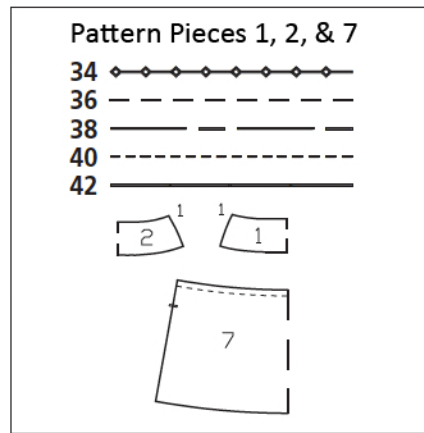
Preparations

Print the pattern out on letter or A4 sized paper. It is **very important** to not scale the document. Your pattern will print on multiple pages, which you will then tile together. Arrange the sheets on a large, hard and flat surface matching up the numbers and letters (i.e. 6A to 6A). Cut or fold one of the sides and match the edge to its corresponding side. Then, tape down in place so paper is secure.

Trace the pattern pieces from the pattern sheet following the lines and markings for style 121 and your size.

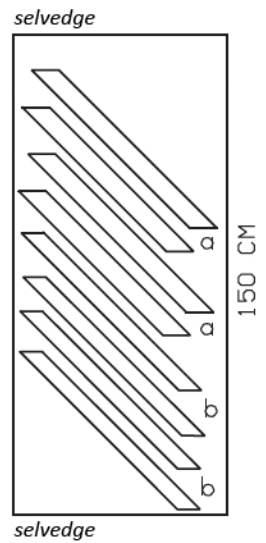
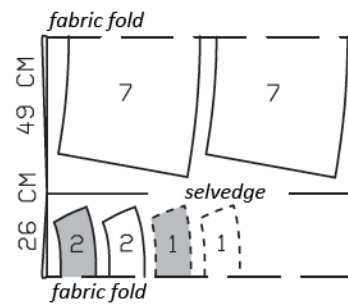
burda style magazine patterns do not have seam allowance included.

Seam and hem allowance to be added:
Seams, edges, and hem 1.5 cm (5/8 in).

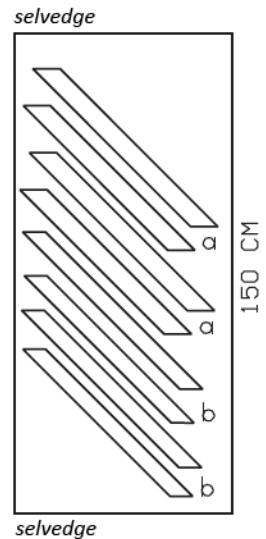
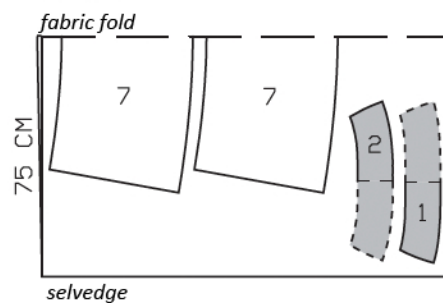


Fold the fabric as shown in the pattern layout. Right side faces in on a double layer of fabric; right side faces up on a single layer of fabric.

Sizes 34-40



Size 42



Cutting Out

- 1 front yoke, on a fold 2x
- 2 back yoke, on a fold 2x
- 7 skirt panel, on a fold 2x

Draft the following pieces NOT included in the pattern:

a) frill, cut on bias, a total of 260 – 265 – 275 – 280 – 285 cm (102 1/4 – 104 1/4 – 108 1/4 – 110 1/4 – 112 1/4 ins) long, 6 cm (2 3/8 ins) wide,

b) frill, cut on bias, a total of 260 – 265 – 275 – 280 – 285 cm (102 1/4 – 104 1/4 – 108 1/4 – 110 1/4 – 112 1/4 ins) long, 5 cm (2 ins) wide.

Interfacing: See shaded area on pattern layout. Interface outer yoke pieces.

Sewing

Stitch right side seam of yoke units, stitching seam of inside yoke as mirror image of outer yoke. Stitch right side seam of skirt. Press seam allowances open.

Gather upper edge of skirt to match yoke. Stitch outer yoke to upper edge of skirt. Press seam allowances onto yoke.

Sew invisible zip to left slit edges, see the “Helpful Hint” on next page. Stitch left side seam from lower edge to zip.

Face upper skirt edge: Lay inside yoke on skirt, right sides together. Pin to upper skirt edge. At zip slit, turn yoke back, approx. 5 mm (3/16 in) before slit edge, and pin to upper edge. Turn allowances of skirt at slit edges to outside and pin to upper skirt edge, over yoke. Stitch along upper skirt edge. Turn allowances at slit edges and yoke to inside. Sew yoke to zip tapes. Lay inside yoke pieces flat over attachment seam, not turned in, and pin. Topstitch yoke close to attachment seam.

Press hem allowance to inside, turn in, and stitch.



For each hem frill, stitch pieces together then stitch ends together to form a ring. Slightly fringe both edges of each frill. Lay narrow frill on wider frill. Gather frills along the centre and stitch to skirt, 2.5 cm (1 in) above hem edge.



These special zippers come in various lengths. The zipper should be at least 2 cm (3/4 in) longer than the slit. It is sewn in place before the seam below the slit is stitched. A special presser foot is required to sew the zipper in place.

Sewing the zipper in place:

Open the zipper and push the coil back with your thumbnail to reveal the seam marking between the tape and the coil. Place the open zipper right side down on the right fabric side of one slit edge.

In order to stitch the zipper in place exactly along the marked seam line, you must first calculate the distance between the tape edge and the fabric edge as follows: width of seam allowance minus 1 cm (3/8 in) tape width = distance from edge of fabric. This will yield a value of 5 mm (3/16 in) if the width of the seam allowance is 1.5 cm (5/8 in).

Pin the top end of the zipper tape in place, the calculated distance from the edge of the fabric. The bottom end of the zipper will extend past the marked end of the slit. Place the presser foot on the zipper so that the coil is in the notch to the right of the needle (1). Stitch zipper in place, from the top to the marked end of the slit. Close zipper.

Place the other zipper tape face down on the opposite slit edge and pin in place at the top. Open zipper again. Place the presser foot on the top end of the zipper so that the coil is in the notch to the left of the needle (2). Sew the zipper in place, from the top to the end of the slit. Close zipper.

Now stitch the seam below the zipper, from bottom to top. Turn the loose lower end of the zipper out of the way, over the seam allowance. Stitch as close as possible to the last stitches of the zipper seams. Trim away excess zipper and bind the end with a scrap of fabric.

Additional Information:

Burda patterns do not include seam and hem allowances. We recommend adding 1-2 cm (3/8 - 3/4 inch) for seams and 2-5 cm (3/4 - 2 inch/es) for hems. Refer to your specific pattern instructions for exact measurements.

The fabric requirements are based on the fabric used for the original designs. These amounts will change if you use fabric of a different width. The pattern of the fabric determines whether all the pieces must be cut in the same direction or whether some can be reversed to save fabric.

The cutting layout printed with the instructions shows the best way to place the pattern pieces on our original fabric. Fold the fabric double with the right side facing in. The fabric then has a fold edge and a selvedge edge. When cutting from a single fabric layer, the right side should face up.

Pattern pieces which are shown in the cutting layout with broken outlines should be pinned to the fabric with their printed side facing down.

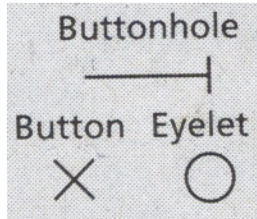
Grey shaded areas in the cutting layout indicate which pieces are to be interfaced.

Transfer the pattern piece lines to the wrong side of your fabric with burda dressmaker's carbon paper. Hand-baste along lines (e.g. for pockets or centre front) to make them visible on the right side of the fabric.

Key Symbols:

Seam numbers

show where pattern pieces must be sewn together. Match pieces with the same numbers.

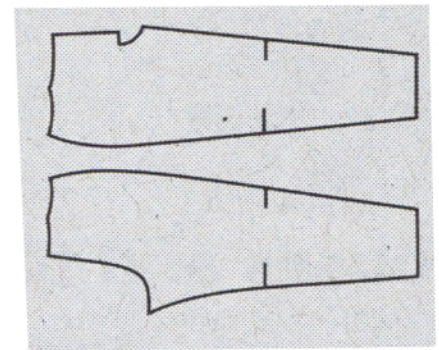


Seam marks

on long seams. Match the small symbols to one another.



Presser foot is the symbol for seam and top-stitching lines.



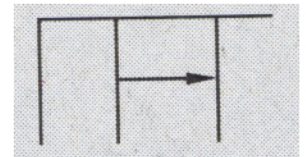
Scissors

indicate edges to be cut with-out seam allowances and alsoslash lines, e. g. pocket openings.



Pleat symbol

Fold pleat in direction of arrow.



Placket/slit mark

Indicates beginning/ end of placket/slit.



Gather
Ease
Stretch

