

127 Trousers

Burda sizes 34, 36, 38, 40, 42

Side length with waistband 96 cm (37 3/4 ins)

Waistband edge is 1 cm (3/8 in) below waist

Hem circumference 30 cm (12 ins)

Materials

Canvas,
width: 150 cm (59 ins)
length: 1.80 – 1.80 – 1.80 – 1.85 – 1.85 m
(2 – 2 – 2 – 2 1/8 – 2 1/8 yds).

Interfacing.

1 zip, 12 – 12 – 12 – 14 – 14 cm (5 – 5 – 5 – 6 – 6 ins) long.

2 metal zips, 20 cm (8 ins) long.

2 trouser hook and bar fasteners (Prym).

Recommended fabrics: Trousers fabrics with some body.

Preparations

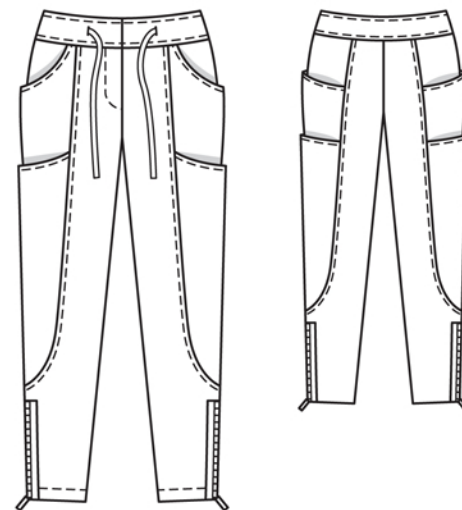
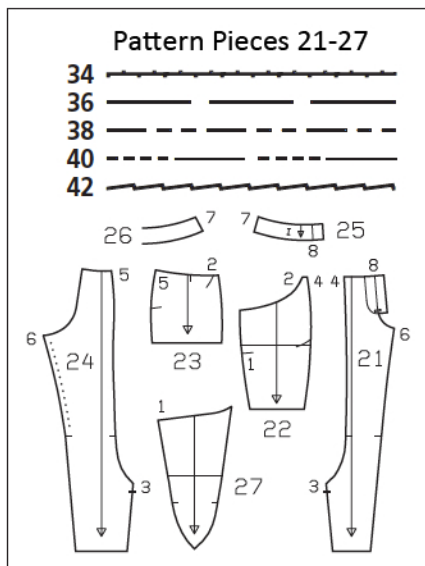
Print the pattern out on letter or A4 sized paper. It is **very important** to not scale the document. Your pattern will print on multiple pages, which you will then tile together. Arrange the sheets on a large, hard and flat surface matching up the numbers and letters (i.e. 6A to 6A). Cut or fold one of the sides and match the edge to its corresponding side. Then, tape down in place so paper is secure.

Trace the pattern pieces from the pattern sheet following the lines and markings for style 144 and your size. Trace the pocket pieces from pieces 22 and 27 as separate pattern pieces.

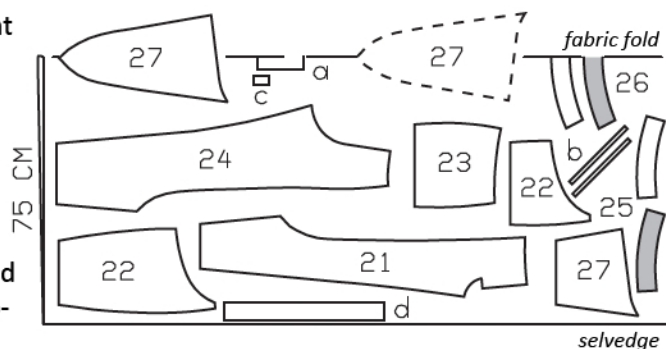
The stitching line at the zip slit is marked for size 34. For sizes 36 – 42, mark the stitching line the same distance from centre front as for size 34, noting length of slit.

burda style magazine patterns do not have seam allowance included.

Seam and hem allowance to be added:
Seams and edges 1.5 cm (5/8 in), hem 4 cm (1 5/8 ins).



Cut from a double layer of fabric, right side facing in. Pieces shown extending over the fabric fold should be cut last from a single layer of fabric. Cut right and left pieces as opposites.



Cutting Out

- | | | | |
|-----------------------------|----|------------------------------|----|
| 21 front trouser piece | 2x | 24 back trouser piece | 2x |
| 22 upper side trouser piece | 2x | 25 front waistband | 4x |
| pocket piece | 2x | 26 back waistband, on a fold | 2x |
| 27 lower side trouser piece | 2x | | |
| pocket piece | 2x | | |
| 23 side hip yoke with | | | |
| integrated pocket piece | 2x | | |

Draft the following pieces NOT included in the pattern:

- left underlap piece, 13 – 13 – 13 – 15 – 15 cm (5 1/4 – 5 1/4 – 5 1/4 – 6 – 6 ins) long, 6 cm (2 1/2 ins) wide, finished width 3 cm (1 1/4 ins),
- 4 bands for zips, cut on bias, 22 cm (9 ins) long, 2.5 cm (1 in) wide (incl. allowances),
- 2 facing strips for casing slits, 4 cm (1 5/8 ins) long, 2 cm (1 in) wide (incl. allowances),
- 2 tie bands, 45 cm (18 ins) long, 5 cm (2 ins) wide (incl. allowances).

Interfacing: See shaded area on pattern layout. Interface outer waistband pieces.

Sewing

Stretch inside leg seam edges of back trouser pieces above marking, see style 149.

Stitch each pocket piece to pocket opening edge of upper and lower side trouser pieces, right sides facing. Turn pocket pieces to inside and press edges. Topstitch 7 mm (1/4 in) from pocket opening edges. Pin pocket opening edges of lower side trouser pieces to upper side trouser pieces at placement lines (seam number 1). Stitch lower pocket piece edges together. Baste side pocket piece edges in place. Pin pocket opening edges of upper side trouser pieces to side hip yokes at placement lines (seam number 2). Stitch lower pocket piece edges together. Baste side pocket piece edges in place.

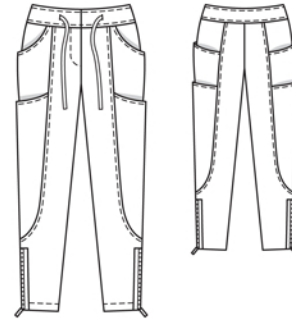
Stitch each side seam from seam number 3 to slit mark, beginning exactly at marked section seam line. Press seam allowances open.

Stitch side trouser pieces to front trouser pieces, not catching allowances of side seam. Stitch side trouser pieces to back trouser pieces, not catching allowances of side seams. Press seam allowances toward front and back trouser pieces. Topstitch front and back trouser pieces 7 mm (1/4 in) from seams.

Turn hem allowances to inside, turn in to a hem width of 2.2 cm (7/8 in), and press. Pin hem allowances to slit edges.

Stretch seam edges: Lay back trouser pieces together, right sides facing. Use a steam-iron to press inside leg seam edges above marking (or press under a damp cloth) to stretch them to match corresponding edges on front trousers.

Press allowances on side slit edges to inside. Press long edges of bands for zips to wrong side, 6 mm (1/4 in) wide. Baste bands to zip tapes, next to teeth of zip. Turn in band ends together with ends of zip tapes. Pin zips to slit edges so that zips open from bottom to top and zip teeth lie even with opening edges. Edgestitch edges of bands in place (zipper foot).



Stitch inside leg seams, turning hem allowances down to do so. Stitch centre front seam below slit mark.

Zip slit: Press self-facings on slit edges to inside – along centre front on the right and 5 mm (3/16 in) before centre front on the left. Stitch zip under left slit edge (underlap), close to teeth of zip. Pin slit closed, matching centre fronts. Stitch loose zip tape to right facing, not catching trouser piece. Baste facing in place. Topstitch slit from upper edge to 3 cm (1 1/4 ins) before end, as marked. Fold underlap piece lengthwise, right side facing in. Stitch across bottom end. Turn right side out. Lay underlap under left slit edge and pin to facing. Stitch facing to underlap, close to zip attachment seam. Lay slit closed again and topstitch to the end, catching underlap.

Fold tie bands in half lengthwise and press, wrong side facing in. Unfold tie bands again. Turn in one end of each. Now turn both edges of bands in to pressed crease and press again. Edgestitch turned-under edges together.

Pin facing strips to outer front waistband pieces, over slit markings, right sides together. Work from inside to stitch closely around markings. Slash between lines of stitching. Turn facing strip to inside. Press slit edges. Topstitch close to edges.

Stitch side seams on waistband units. Press seam allowances open. Stitch outer waistband unit to upper trousers edge, leaving right waistband end extending from centre front and stitching left waistband end to slit underlap. Press seam allowances onto waistband. Lay tie bands under front waistband pieces and stitch to side seam allowances. Pass ends of tie bands out through slits. Lay second (inside) waistband unit on attached waistband piece, right sides facing. Stitch upper edges together. Turn inside waistband unit up. Press seam allowances open and press allowance on inside waistband edge to inside. Trim right waistband end to 1 cm (3/8 in) before centre front. Attach trouser hooks to inside waistband, 1 cm (3/8 in) from right waistband end and 1 cm (3/8 in) from both upper waistband edge and inside edge. Lay inside waistband on outside waistband, right sides facing. Stitch across front waistband ends. Trim seam allowances. Turn waistband right side out. Baste inside edge in place. Topstitch waistband 7 mm (1/4 in) from attachment seam and from upper edge. Attach bars of trouser fasteners to waistband, to match hooks.

Topstitch 2 cm (3/4 in) from hem edges, beginning at bands.

Additional Information:

Burda patterns do not include seam and hem allowances. We recommend adding 1-2 cm (3/8 - 3/4 inch) for seams and 2-5 cm (3/4 - 2 inch/es) for hems. Refer to your specific pattern instructions for exact measurements.

The fabric requirements are based on the fabric used for the original designs. These amounts will change if you use fabric of a different width. The pattern of the fabric determines whether all the pieces must be cut in the same direction or whether some can be reversed to save fabric.

The cutting layout printed with the instructions shows the best way to place the pattern pieces on our original fabric. Fold the fabric double with the right side facing in. The fabric then has a fold edge and a selvedge edge. When cutting from a single fabric layer, the right side should face up.

Pattern pieces which are shown in the cutting layout with broken outlines should be pinned to the fabric with their printed side facing down.

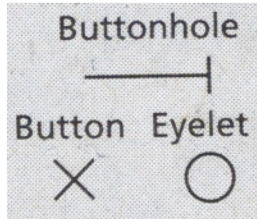
Grey shaded areas in the cutting layout indicate which pieces are to be interfaced.

Transfer the pattern piece lines to the wrong side of your fabric with burda dressmaker's carbon paper. Hand-baste along lines (e.g. for pockets or centre front) to make them visible on the right side of the fabric.

Key Symbols:

Seam numbers

show where pattern pieces must be sewn together. Match pieces with the same numbers.



Seam marks

on long seams. Match the small symbols to one another.



Presser foot is the symbol for seam and top-stitching lines.



Scissors

indicate edges to be cut without seam allowances and also slash lines, e.g. pocket openings.



Pleat symbol

Fold pleat in direction of arrow.



Placket/slit mark

Indicates beginning/ end of placket/slit.



Gather
Ease
Stretch

