

103 Jacket

Burda sizes 36, 38, 40, 42, 44

Back length approx. 72 cm (28 1/2 ins)

Materials

Linen blend,
width: 150 cm (59 ins)
length: 1.85 – 1.85 – 1.90–1.90–1.90m (2 1/8 yds).

Interfacing.

5 buttons.

Shoulder pads.

Magic chalk.

Recommended fabrics: Lightweight jacket fabrics which fray easily, to make fringe.

Preparations

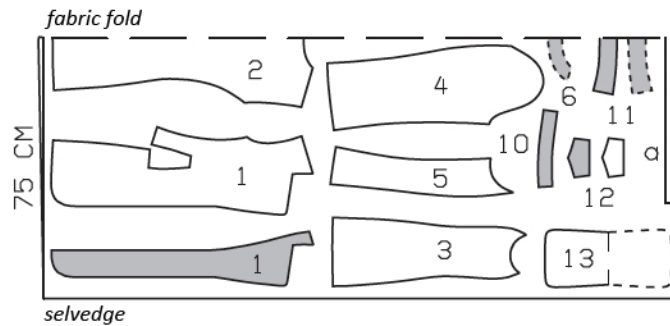
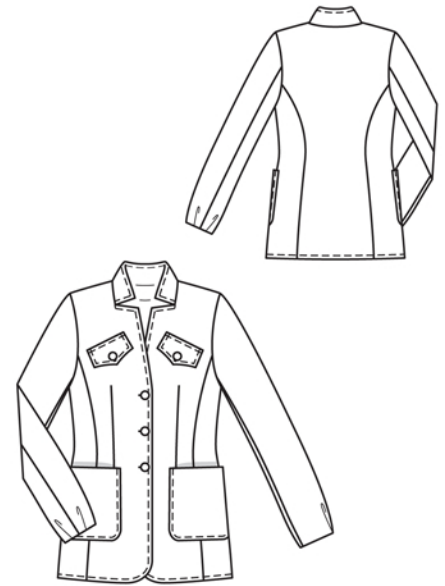
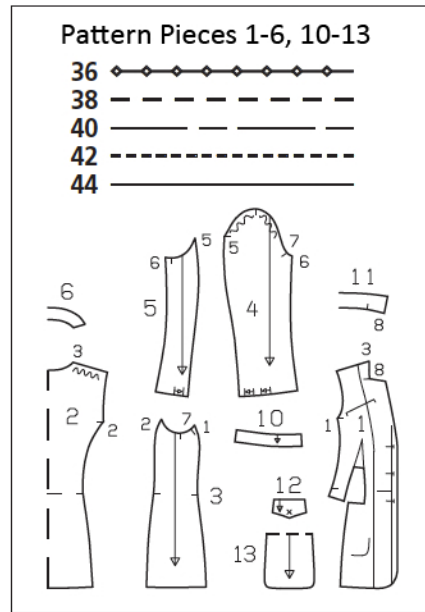
Print the pattern out on letter or A4 sized paper. It is **very** important to not scale the document. Your pattern will print on multiple pages, which you will then tile together. Arrange the sheets on a large, hard and flat surface matching up the numbers and letters (i.e. 6A to 6A). Cut or fold one of the sides and match the edge to its corresponding side. Then, tape down in place so paper is secure.

Trace the pattern pieces from the pattern sheet following the lines and markings for style 103 and your size.

burda style magazine patterns do not have seam allowance included.

Seam and hem allowance to be added:

Seams and edges 1.5 cm (5/8 in), at dart 1 cm (3/8 in).



Cut from a double layer of fabric, right side facing in.

Cutting Out

Cutting out:

1 front	2x	6 back facing, on a fold	1x
front facing	2x	10 sleeve facing	2x
2 back, on a fold	1x	11 collar, on a fold	2x
3 side piece	2x	12 flap	4x
4 upper sleeve	2x	13 pocket, on a fold	2x
5 under sleeve	2x		

Draft the following piece NOT included in the pattern:

a) hem facing, 95 – 99 – 103 – 107 – 111 cm (37 1/2 – 39 – 40 3/4 – 42 1/4 – 43 3/4 ins) long, 3 cm (1 1/4 ins) wide (incl. allowances).

Interfacing: See shaded area on pattern layout. Cut interfacing for front facings, collar and flaps 3 mm (1/8 in) smaller on outer edge than the paper pattern pieces. Also iron pieces of interfacing to fronts, at corner between front dart line and lower horizontal seam line.

Sewing

Stitch bust darts. Clip diagonally into seam allowance at bottom of darts. Press darts open, pressing points of darts flat. Then stitch horizontal edges of fronts right sides together. Press seam allowances open.

Stitch side pieces to front and back pieces. Stitch shoulder seams on jacket and on facing. Press seam allowances open. Neaten inside facing edge.

Neaten one lengthwise (inside edge) of hem facing. Pin and baste hem facing to lower jacket edge, with wrong sides together, and baste to lower edge next to hem allowance.

Stitch outer collar to neck edge of jacket and stitch inside collar to facing. Begin and end exactly at marking at seam number 8 – seam allowance on narrow edge of collar extends past marking. Clip seam allowance of front and facing into corner. Press allowances of collar attachment seams open. Lay facing on jacket, with wrong sides together. Lay top collar and under-collar together and baste edges together next to seam allowance. Pin collar attachment seams together. Turn seam allowances on narrow upper edges of front and facing back and pin in place. Use vanishing chalk to mark seam line on right fabric side, 1.5 cm (5/8 in) from outer collar edges. Topstitch collar edges 3 mm (1/8 in) from marking then topstitch twice more, next to first line of stitching, spacing lines of stitching 3 mm (1/8 in) apart. Trim away the 1.5 cm (5/8 in) wide seam allowances on outer collar edges. Remove pins at narrow upper edges. Beginning at collar attachment seam, stitch front edges and hem edge to facing, as described for collar.

At neck edge, turn facing up again and stitch seam allowances together, close to collar attachment seam. Turn facing down again and sew to shoulder seams. To fringe outer edges of jacket and collar, draw out fabric threads, up to line of stitching.



Patch pockets: Fold pockets on fabric fold line, with wrong side facing in, and press. Mark side and lower pocket edges on right fabric side, 1.5 cm (5/8 in) from outer edges. Stitch edges together 3 mm (1/8 in) from marking. Trim away the 1.5 cm (5/8 in) wide seam allowances on outer edges. Pin pockets to jacket at placement lines. Stitch side and lower pocket edges in place, along line of previous stitching, then twice more next to this line of stitching, spacing lines of stitching 3 mm (1/8 in) apart. Fringe pocket edges.

Lay each interfaced flap piece on flap piece with no interfacing, wrong sides together. Stitch side and lower edges together as described for collar. Trim away seam allowances. Fringe edges. Stitch flaps to fronts (attachment lines), press down, and stitch again close to attachment seam. Sew flaps to fronts with one button each.

Stitch back sleeve seams. Lay pleats in lower sleeve edges in direction of arrows and baste. Stitch sleeve facings to lower sleeve edges, right sides together. Trim seam allowances. Turn facings down and stitch to seam allowances, close to seams. Stitch front sleeve seams. Turn facings to inside and sew to seams.

Set in sleeves, easing sleeve caps. Sew shoulder pads in place.

Work buttonholes in right front.

Additional Information:

Burda patterns do not include seam and hem allowances. We recommend adding 1-2 cm (3/8 - 3/4 inch) for seams and 2-5 cm (3/4 - 2 inch/es) for hems. Refer to your specific pattern instructions for exact measurements.

The fabric requirements are based on the fabric used for the original designs. These amounts will change if you use fabric of a different width. The pattern of the fabric determines whether all the pieces must be cut in the same direction or whether some can be reversed to save fabric.

The cutting layout printed with the instructions shows the best way to place the pattern pieces on our original fabric. Fold the fabric double with the right side facing in. The fabric then has a fold edge and a selvedge edge. When cutting from a single fabric layer, the right side should face up.

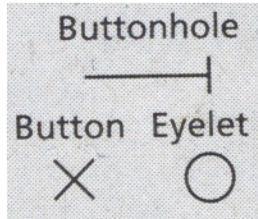
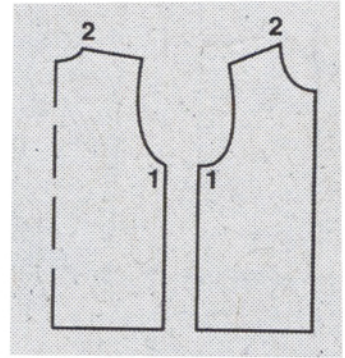
Pattern pieces which are shown in the cutting layout with broken outlines should be pinned to the fabric with their printed side facing down.

Grey shaded areas in the cutting layout indicate which pieces are to be interfaced.

Transfer the pattern piece lines to the wrong side of your fabric with burda dressmaker's carbon paper. Hand-baste along lines (e.g. for pockets or centre front) to make them visible on the right side of the fabric.

Key Symbols:

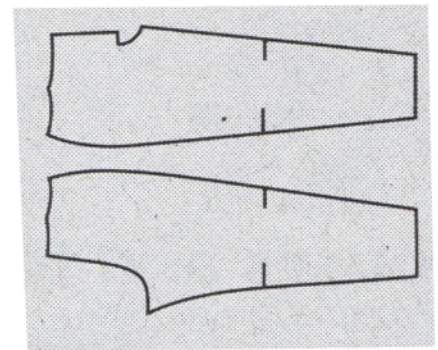
Seam numbers
show where pattern pieces must be sewn together. Match pieces with the same numbers.



Seam marks
on long seams. Match the small symbols to one another.



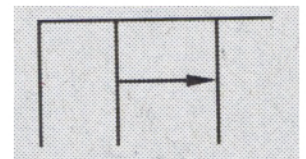
Presser foot
is the symbol for seam and top-stitching lines.



Scissors
indicate edges to be cut without seam allowances and also slash lines, e.g. pocket openings.



Pleat symbol
Fold pleat in direction of arrow.



Placket/slit mark
Indicates beginning/end of placket/slit.

