

121A Turtleneck

Burda sizes 36, 38, 40, 42, 44

Length from waist 15 cm (6 ins)

Sleeves are about 15 cm (6 ins) longer than normal

Materials

Fine stretch jersey,
width: 140 cm (55 in)
length: 1.75 m (2 yds) for all sizes.

A twin sewing machine needle.

Recommended fabrics: Fine stretch jersey. Use only jersey with two-way stretch.

Preparations

Print the pattern out on letter or A4 sized paper. It is **very important** to not scale the document. Your pattern will print on multiple pages, which you will then tile together. Arrange the sheets on a large, hard and flat surface matching up the numbers and letters (i.e. 6A to 6A). Cut or fold one of the sides and match the edge to it's corresponding side. Then, tape down in place so paper is secure.

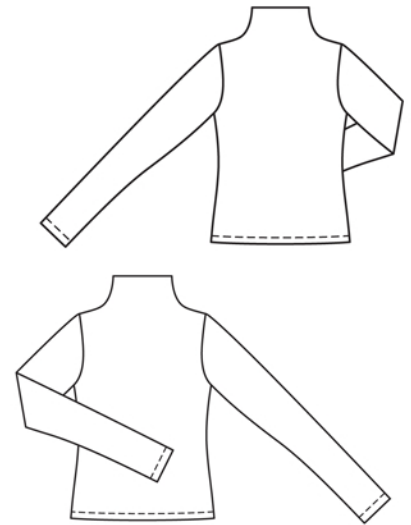
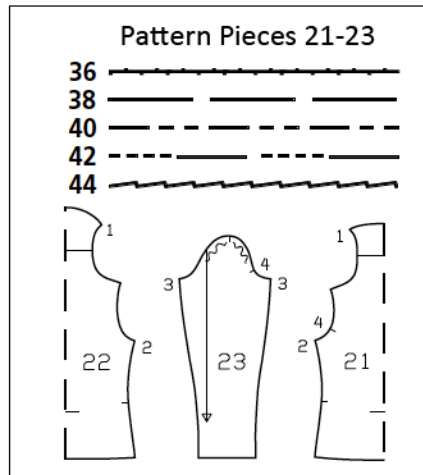
Trace the pattern pieces from the pattern sheet following the lines and markings for style 121A and your size.

burda style magazine patterns do not have seam allowance included.

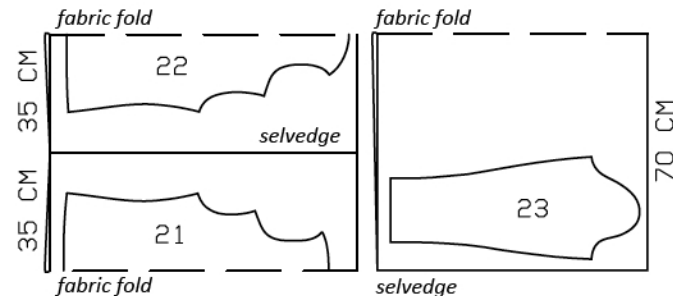
Seam and hem allowance to be added:
Seams and edges 1.5 cm (5/8 in), hem and sleeve hems 3 cm (1 1/4 ins).

Cutting Out

21 front with integrated collar,
on a fold 1x
22 back with integrated collar,
on a fold 1x
23 sleeve 2x



Fold the fabric as shown in the pattern layout, right side facing in.



Sewing

Stitch collar seams, from seam number 1, and shoulder seams as continuous seams. Trim seam allowances to 7 mm (1/4 in) wide, neaten together, and press onto back. Stitch side seams and sleeve seams.

Set in sleeves, easing sleeve caps

Fold collar on fold line, wrong side facing in. Pin collar seams together exactly. Grasp collar from inside, pull seams out and stitch seam allowances together, close to seams. Push seams back in place again.

Lay hem allowances on top and sleeves, to inside. Stitch hems 2.5 cm (1 in) wide, from right side, using the twin machine needle.