

116 Skirt

Burda sizes 36, 38, 40, 42, 44
 Skirt length 70 cm (27 3/4 ins)
 (Upper edge of skirt = waist)

Materials

Wool,
 width: 150 cm (59 in)
 length: 1.00 m (1 1/8 yds) for all sizes.

Lining,
 width: 140 cm (55 in)
 length: 0.80 m (7/8 yd).

Vilene Bias Tape.

1 invisible zip, 22 cm (9 ins) long

Recommended fabrics: Skirt fabrics made of wool or blends.

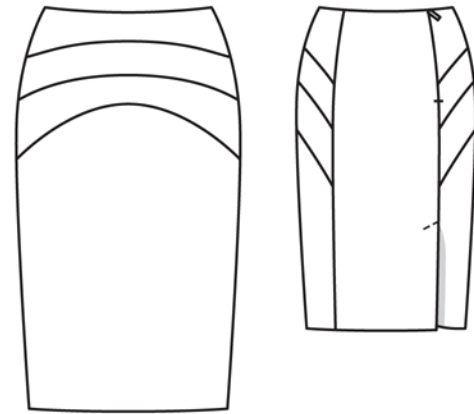
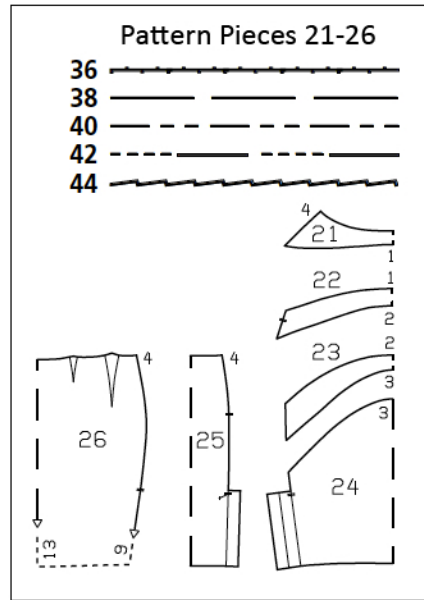
Preparations

Print the pattern out on letter or A4 sized paper. It is **very important** to not scale the document. Your pattern will print on multiple pages, which you will then tile together. Arrange the sheets on a large, hard and flat surface matching up the numbers and letters (i.e. 6A to 6A). Cut or fold one of the sides and match the edge to its corresponding side. Then, tape down in place so paper is secure.

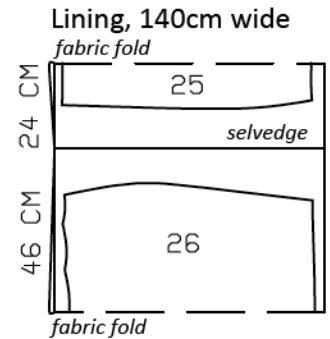
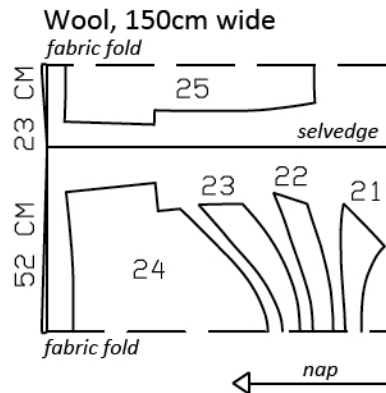
Trace the pattern pieces from the pattern sheet following the lines and markings for style 116 and your size. Note different lines for vent and seam, but first cut skirt panels the same size from the double layer of fabric. Use piece 25 to cut back skirt lining, but without the vent facing.

burda style magazine patterns do not have seam allowance included.

Seam and hem allowance to be added:
 Seams and edges 1.5 cm (5/8 in), hem 4 cm (1 5/8 ins), lining 1.5 cm (5/8 in).



Fold the fabric as shown in the pattern layout, right side facing in. Note direction of nap.



Cutting Out

Wool fabric:

- 21 upper front skirt panel – upper piece, on a fold 1x
- 22 upper front skirt panel – middle piece, on a fold 1x
- 23 upper front skirt panel – lower piece, on a fold 1x
- 24 lower front skirt panel, on a fold 1x
- 25 back skirt panel, on a fold 1x

Lining:

- 26 front skirt lining, on a fold 1x
- 25 back skirt lining, on a fold 1x

Vilene Bias Tape: Iron onto upper edge of skirt pieces (pieces 21 and 25) so that chain stitching lies along marked seam line.

Sewing

Stitch upper front skirt panel pieces together and stitch to lower front skirt panel (seam numbers 1 to 3). Press seam allowances open.

Lay skirt back skirt right sides together with skirt front. Stitch left vertical seam from top (seam number 4) to bottom. Trim slit allowances of this seam to width of seam allowances.

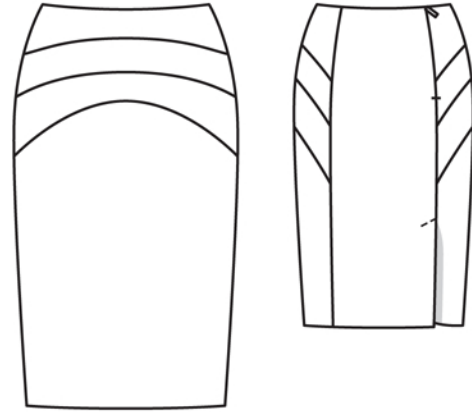
Sew invisible zip to right opening edges, from upper edge to top slit mark, see the "Helpful Hint" on next page. Stitch right seam from bottom slit mark to zip. At vent, clip seam allowance of skirt front diagonally into corner. Press seam allowances open and press vent allowances onto skirt back. Press facing on underlap piece to inside. Topstitch skirt back skirt diagonally at top of vent, as marked, catching underlap.

Stitch darts and seams of lining, leaving slits open as mirror image of skirt. Leave slit for zip open 2 cm (3/4 in) longer than on skirt.

Face upper edge of skirt: Place lining over skirt with right sides facing, and pin to upper edge of skirt. Turn lining at zip opening back, about 5 mm (3/16 in) before edge of opening, and pin to upper edge. Lay slit allowances of skirt outward and pin to upper edge of skirt, over lining. Stitch along upper edge of skirt. Turn allowances on edges of slit to inside. Lay lining up and stitch to seam allowances, as far as possible, close to seam. Turn lining to inside and sew to zip tapes.

Unfold facings at hem. Press hem allowance to inside and sew in place by hand. Lay facings at vents to inside again and sew to hem.

Turn in hem allowance of lining and stitch so that lining is 2 cm (3/4 in) shorter than skirt. At vent, sew lining to inside edge of underlap facing. Cut a rectangle from other edge of lining, up to 1 cm (3/8 in) before fold edge of underlap piece and to 1 cm (3/8 in) above top of vent. Clip 1 cm (3/8 in) diagonally into corner. Turn in edges of lining and sew to inside edge of vent facing and to underlap, across top of vent.





These special zippers come in various lengths. The zipper should be at least 2 cm (3/4 in) longer than the slit. It is sewn in place before the seam below the slit is stitched. A special presser foot is required to sew the zipper in place.

Sewing the zipper in place:

Open the zipper and push the coil back with your thumbnail to reveal the seam marking between the tape and the coil. Place the open zipper right side down on the right fabric side of one slit edge.

In order to stitch the zipper in place exactly along the marked seam line, you must first calculate the distance between the tape edge and the fabric edge as follows: width of seam allowance minus 1 cm (3/8 in) tape width = distance from edge of fabric. This will yield a value of 5 mm (3/16 in) if the width of the seam allowance is 1.5 cm (5/8 in).

Pin the top end of the zipper tape in place, the calculated distance from the edge of the fabric. The bottom end of the zipper will extend past the marked end of the slit. Place the presser foot on the zipper so that the coil is in the notch to the right of the needle (1). Stitch zipper in place, from the top to the marked end of the slit. Close zipper.

Place the other zipper tape face down on the opposite slit edge and pin in place at the top. Open zipper again. Place the presser foot on the top end of the zipper so that the coil is in the notch to the left of the needle (2). Sew the zipper in place, from the top to the end of the slit. Close zipper.

Now stitch the seam below the zipper, from bottom to top. Turn the loose lower end of the zipper out of the way, over the seam allowance. Stitch as close as possible to the last stitches of the zipper seams. Trim away excess zipper and bind the end with a scrap of fabric.

Additional Information:

Burda patterns do not include seam and hem allowances. We recommend adding 1-2 cm (3/8 - 3/4 inch) for seams and 2-5 cm (3/4 - 2 inch/es) for hems. Refer to your specific pattern instructions for exact measurements.

The fabric requirements are based on the fabric used for the original designs. These amounts will change if you use fabric of a different width. The pattern of the fabric determines whether all the pieces must be cut in the same direction or whether some can be reversed to save fabric.

The cutting layout printed with the instructions shows the best way to place the pattern pieces on our original fabric. Fold the fabric double with the right side facing in. The fabric then has a fold edge and a selvedge edge. When cutting from a single fabric layer, the right side should face up.

Pattern pieces which are shown in the cutting layout with broken outlines should be pinned to the fabric with their printed side facing down.

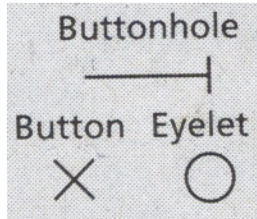
Grey shaded areas in the cutting layout indicate which pieces are to be interfaced.

Transfer the pattern piece lines to the wrong side of your fabric with burda dressmaker's carbon paper. Hand-baste along lines (e.g. for pockets or centre front) to make them visible on the right side of the fabric.

Key Symbols:

Seam numbers

show where pattern pieces must be sewn together. Match pieces with the same numbers.



Seam marks

on long seams. Match the small symbols to one another.



Presser foot is the symbol for seam and top-stitching lines.



Scissors

indicate edges to be cut without seam allowances and also slash lines, e. g. pocket openings.



Pleat symbol

Fold pleat in direction of arrow.



Placket/slit mark

Indicates beginning/ end of placket/slit.



Gather
Ease
Stretch

