

117 Waistcoat

Burda sizes 76, 80, 84, 88, 92

Back length about 55 cm (22 ins)

Materials

Wool fleece,
width: 150 cm (59 in)
length: 1.90 m (2 1/8 yds) for all sizes.

Lining,
width: 140 cm (55 in)
length: 1.10 m (1 1/4 yds).

Interfacing.

Petersham ribbon, 1.5 cm (5/8 in) wide and 1.10 m (1 1/4 yds) long.

1 separating metal zip, 50 cm (20 ins) long.

Vanishing chalk.

Recommended fabrics: Fleece fabrics.

Preparations

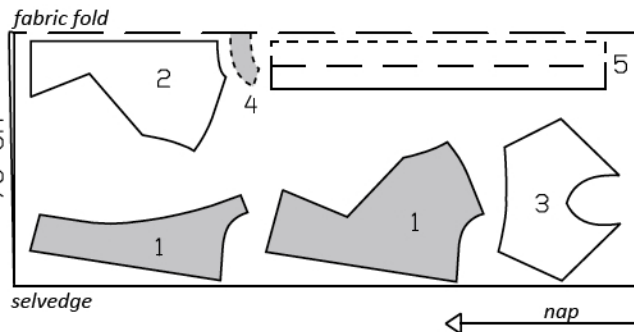
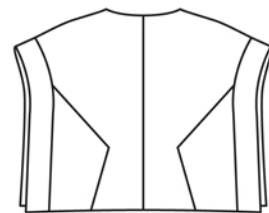
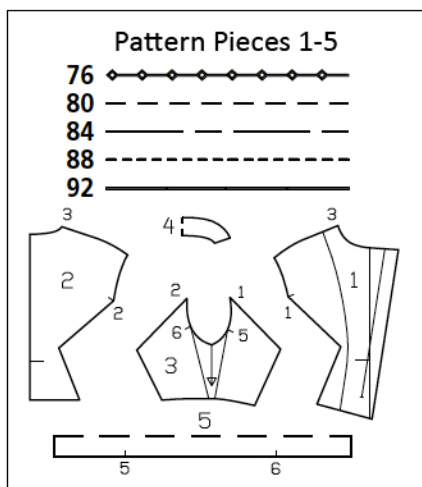
Print the pattern out on letter or A4 sized paper. It is **very important** to not scale the document. Your pattern will print on multiple pages, which you will then tile together. Arrange the sheets on a large, hard and flat surface matching up the numbers and letters (i.e. 6A to 6A). Cut or fold one of the sides and match the edge to its corresponding side. Then, tape down in place so paper is secure.

Trace the pattern pieces from the pattern sheet following the lines and markings for style 117 and your size. Trace the front facing from piece 1 as a separate pattern piece.

burda style magazine patterns do not have seam allowance included.

Seam and hem allowance to be added:

Seams and edges 1.5 cm (5/8 in), hem 4 cm (1 5/8 ins), lining 1.5 cm (5/8 in).



Cut from a double layer of fabric, right side facing in. Note direction of nap.

Cutting Out

Wool fleece fabric:

- 1 front 2x
- front facing 2x
- 2 back 2x
- 3 side piece 2x
- 4 back facing, on a fold 1x
- 5 armhole band, on a fold 2x

Lining: pieces 1 and 2 minus width of facing; piece 3.

Interfacing: See pattern layout. Also interface hem allowances.

Sewing

Stitch centre back seam. Stitch side pieces to fronts and to back (seam numbers 1 and 2), clipping seam allowances of fronts and of back each into corner. Stitch shoulder seams. Press seam allowances open.

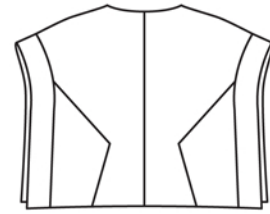
Sew zip to right front facing: Separate zip halves. Use vanishing chalk to mark abutting lines for zip on right front facing, 2.5 cm (1 in) from front edge, and for petersham ribbon, 4.7 cm (a scant 2 ins) from front edge. Pin right half of zip face down on right front facing so that teeth of zip meet respective abutting line. Teeth begin at the top, 5 mm (3/16 in) below marked neck edge. Stitch zip tape. Pin petersham ribbon to facing, over zip tape, matching side edge of petersham ribbon with abutting line. Turn in bottom end of petersham ribbon to end of zip. Baste petersham ribbon in place. Stitch front and bottom edge of petersham ribbon in place (zipper foot).

Stitch shoulder seams of facing. Lay facing right sides together with fronts and back and pin. Stitch along front hem edges, front edges, and neck edge. Trim seam allowances, trimming corners diagonally. Turn facing to inside and press edges. Press hem allowance to inside and sew in place by hand.

Topstitch right front edge as marked, catching petersham ribbon on inside.

Sew zip to left front: Close zip. Lay right front on left front, matching center fronts. Pin loose zip tape to left front and turn in top end of tape. Stitch zip tape in place, not catching facing. Pin petersham ribbon to left front, over zip tape, turn in top, and bottom ends of ribbon. Stitch edge of petersham ribbon in place, next to teeth of zip and next to ends, not catching facing. Stitch side edge of petersham ribbon in place, not catching facing.

Fold armhole bands in half lengthwise, right fabric side facing in. Stitch across ends. Turn bands right side out and press. Pin open edges of bands together. Clip seam allowances at markings. Trim seam allowances to 7 mm (1/4



in) wide, from each seamed end of band to marking, and neaten edges together. Baste open edges of bands together to edges of armholes, between markings (seam numbers 5 and 6). Leave bands open below markings for now.

Stitch section seams and shoulder seams of lining. Lay lining pieces right sides together with waistcoat, catching sleeve bands. Stitch edges of armholes together, not catching loose ends of bands. Trim seam allowances and clip curves. Lay lining pieces into armhole and stitch to seam allowances, close to seam. Turn lining pieces to inside. Stitch loose ends of bands right sides together with waistcoat, along joining lines, not catching lining. Also stitch edge of seam allowances in place.

Turn in edges of centre back seam of lining, toward each other, at the bottom, and pin together. Reach between main fabric and lining, pull out back edges of lining, and stitch together, right sides facing. Turn in front edges of lining, about 8 cm (3 1/4 ins) above hem, and pin to inside edge of facing. Pull edges out and stitch lining to facing, as far as possible. Sew open edges of lining to the top by hand. Sew facings to hem. Pin a fold, about 1 cm (3/8 in) deep, in lining above hem of waistcoat. Turn in lining and sew to hem allowance by hand. Lay extra length of lining down and press. Sew open edges of lining in place.

Additional Information:

Burda patterns do not include seam and hem allowances. We recommend adding 1-2 cm (3/8 - 3/4 inch) for seams and 2-5 cm (3/4 - 2 inch/es) for hems. Refer to your specific pattern instructions for exact measurements.

The fabric requirements are based on the fabric used for the original designs. These amounts will change if you use fabric of a different width. The pattern of the fabric determines whether all the pieces must be cut in the same direction or whether some can be reversed to save fabric.

The cutting layout printed with the instructions shows the best way to place the pattern pieces on our original fabric. Fold the fabric double with the right side facing in. The fabric then has a fold edge and a selvedge edge. When cutting from a single fabric layer, the right side should face up.

Pattern pieces which are shown in the cutting layout with broken outlines should be pinned to the fabric with their printed side facing down.

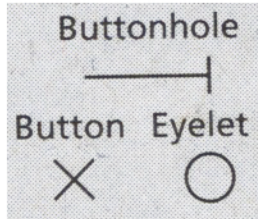
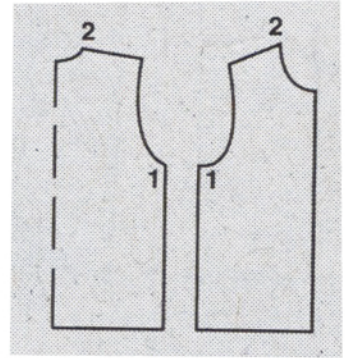
Grey shaded areas in the cutting layout indicate which pieces are to be interfaced.

Transfer the pattern piece lines to the wrong side of your fabric with burda dressmaker's carbon paper. Hand-baste along lines (e.g. for pockets or centre front) to make them visible on the right side of the fabric.

Key Symbols:

Seam numbers

show where pattern pieces must be sewn together. Match pieces with the same numbers.



Seam marks

on long seams. Match the small symbols to one another.



Presser foot is the symbol for seam and top-stitching lines.



Scissors

indicate edges to be cut without seam allowances and also slash lines, e.g. pocket openings.



Pleat symbol

Fold pleat in direction of arrow.



Placket/slit mark

Indicates beginning/end of placket/slit.



Gather
Ease
Stretch

