

Sewing

Note: Use a special stretch stitch for seams on stretch fabrics or stitch at a narrow zigzag setting.

Cut two pieces of bias tape, each 17 cm (6 3/4 ins) long, unfold, and press flat. Fold bias tape lengthwise and press. Work from right side to pin folded bias tape to armhole edges of middle front (seam number 1 to seam number 8) so that fold edge of tape lies on garment piece, 1 cm (3/8 in) past seam line. Stitch bias tape in place. Trim seam allowances. Turn bias tape to inside. Sew inside edge in place loosely by hand.

Stitch upper front to middle front (seam number 1), seam allowances at edges of armholes extend. Stitch middle front to lower front (seam number 2). Trim seam allowances of section seams to 7 mm (1/4 in) wide, neaten together and press up.

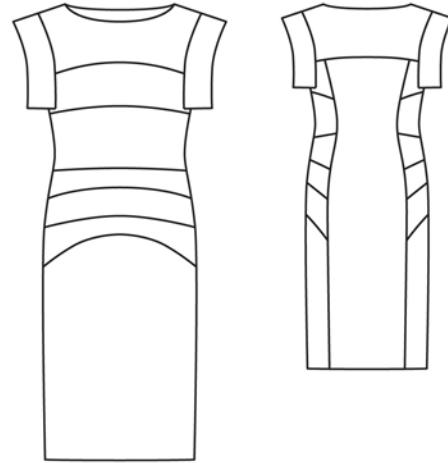
Stitch upper front skirt panel pieces together and stitch to lower front skirt panel (seam numbers 4 to 6). Press seam allowances up. Stitch front skirt panel to front (seam number 3). Press seam allowances open.

Stitch front to lower back (seam number 7). Press seam allowances open. Stitch upper back to front (seam number 8) and to lower back, seam allowances of armhole edges extend. Press seam allowances onto upper piece.

Stitch shoulder seams on dress and facing. Begin and end stitching exactly on marked neck edge. Press seam allowances open.

Pin neck facing right sides together with neck edge. Stitch along front and back neck edge each from shoulder seam to shoulder seam. Trim seam allowances. Lay facing up and stitch to seam allowances close to seam. Turn facing to inside and sew to shoulder seams.

Fold armhole bands in half lengthwise, right side facing in. Stitch across ends. Turn bands right side out and press. Neaten lengthwise edges of bands together, about 10 cm (4 ins) long at each end. Pin ends of bands right sides together with



front and back, along joining lines, then pin open edges of bands together to edges of armholes. Stitch bands. Stitch edge of band seam allowances to front and back, below armholes. Trim allowances at edges of armholes and at edges of bands to 1 cm (3/8 in) above horizontal section seams and bind with remainder of bias tape. Lay bands over joining seams into armholes and press.

Press hem allowance to inside and sew hem in place by hand.

Additional Information:

Burda patterns do not include seam and hem allowances. We recommend adding 1-2 cm (3/8 - 3/4 inch) for seams and 2-5 cm (3/4 - 2 inch/es) for hems. Refer to your specific pattern instructions for exact measurements.

The fabric requirements are based on the fabric used for the original designs. These amounts will change if you use fabric of a different width. The pattern of the fabric determines whether all the pieces must be cut in the same direction or whether some can be reversed to save fabric.

The cutting layout printed with the instructions shows the best way to place the pattern pieces on our original fabric. Fold the fabric double with the right side facing in. The fabric then has a fold edge and a selvedge edge. When cutting from a single fabric layer, the right side should face up.

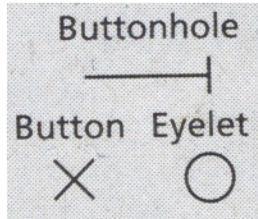
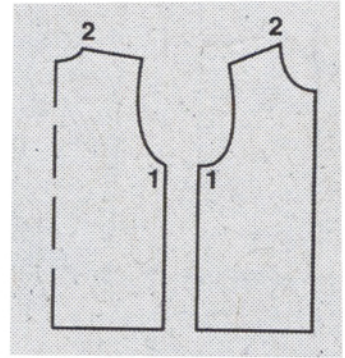
Pattern pieces which are shown in the cutting layout with broken outlines should be pinned to the fabric with their printed side facing down.

Grey shaded areas in the cutting layout indicate which pieces are to be interfaced.

Transfer the pattern piece lines to the wrong side of your fabric with burda dressmaker's carbon paper. Hand-baste along lines (e.g. for pockets or centre front) to make them visible on the right side of the fabric.

Key Symbols:

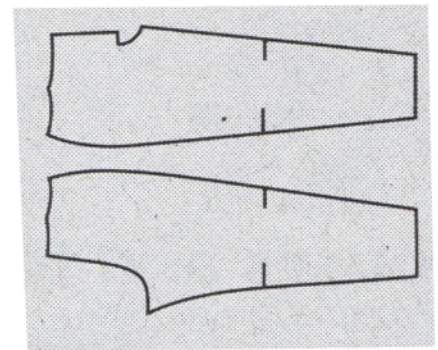
Seam numbers
show where pattern pieces must be sewn together. Match pieces with the same numbers.



Seam marks
on long seams. Match the small symbols to one another.



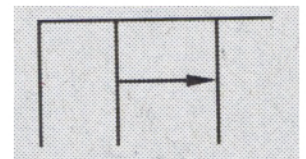
Presser foot
is the symbol for seam and top-stitching lines.



Scissors
indicate edges to be cut without seam allowances and also slash lines, e.g. pocket openings.



Pleat symbol
Fold pleat in direction of arrow.



Placket/slit mark
Indicates beginning/end of placket/slit.

