

### 119 Jacket

Burda sizes 36, 38, 40, 42, 44

Back length about 55 cm (22 ins)

### Materials

Wool,  
width: 150 cm (59 in)  
length: 2.00 m (2 1/4 yds) for all sizes.

Lining,  
width: 140 cm (55 in)  
length: 1.25 m (1 1/2 yds).

Interfacing.

1 separating metal zip, 35 cm (14 ins) long.

2 large sew-on snap fasteners.

Shoulder pads.

Recommended fabrics: Jacket fabrics of wool or blends.

### Preparations

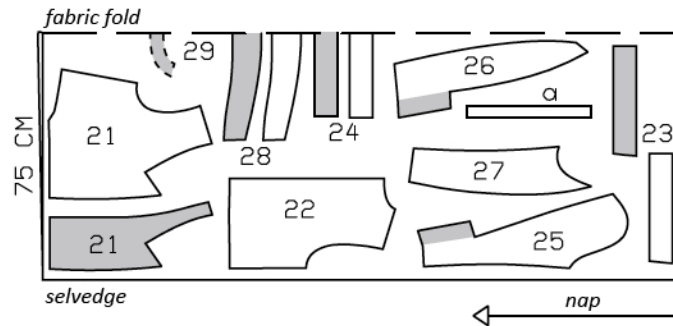
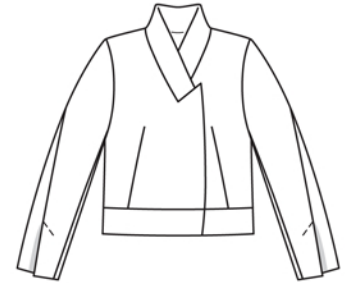
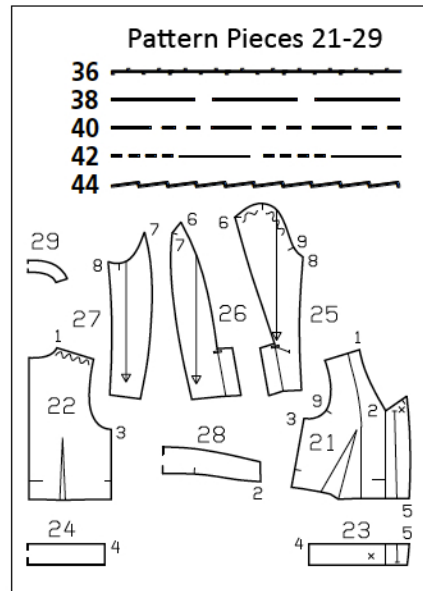
Print the pattern out on letter or A4 sized paper. It is **very important** to not scale the document. Your pattern will print on multiple pages, which you will then tile together. Arrange the sheets on a large, hard and flat surface matching up the numbers and letters (i.e. 6A to 6A). Cut or fold one of the sides and match the edge to its corresponding side. Then, tape down in place so paper is secure.

Trace the pattern pieces from the pattern sheet following the lines and markings for style 144 and your size. Trace the front facing from piece 21 as a separate pattern piece. Mark line for zip on facing. The snap fastener marked on piece 21 applies for size 36. For the other sizes, mark the fastener according to the size lines. The stitching line at the vent on piece 25 is for size 36. Remark the stitching line for sizes 38 – 44.

**burda style magazine patterns do not have seam allowance included.**

Seam and hem allowance to be added:

Seams and edges 1.5 cm (5/8 in), sleeve hems 4 cm (1 5/8 ins). Cut lining pieces with 1.5 cm (5/8 in) wide seam and hem allowances.



Cut from a double layer of fabric, right side facing in. Note direction of nap.

### Cutting Out

Wool fabric:

- 21 front 2x
- front facing 2x
- 22 back 2x
- 23 front waistband 4x
- 24 back waistband, on a fold 2x
- 25 upper sleeve – front piece 2x
- 26 upper sleeve – back piece 2x
- 27 under sleeve 2x
- 28 collar, on a fold 2x
- 29 back facing, on a fold 1x

Draft the following piece NOT included in the pattern:

- a) 2 bands for zip, 37 cm (14 1/2 ins) long, 3 cm (1 1/4 ins) wide (incl. allowance).

Lining: piece 21 minus width of facing; piece 22 minus neck facing and on a fold at centre back, with an ease pleat of about 2 cm (3/4 in); piece 25 without vent allowance; and pieces 26 and 27.

Interfacing: See pattern layout. Interface outer collar piece and outer waistband pieces.

## Sewing

Stitch centre back seam and back darts. Press centre seam allowances open. Cut darts open along centre and press open, pressing points of darts flat. Stitch front darts. Trim dart allowances to 1 cm (3/8 in) wide and press open, pressing points flat.

Stitch side seams, shoulder seams and facing seams. Stitch side seams of waistband pieces. Stitch interfaced outer waistband to lower edge of jacket. Press seam allowances open.

Sleeves with sleeve vents: Stitch back upper sleeve pieces to under sleeve pieces (seam number 7). Stitch front sleeve seams (seam number 8). Press seam allowances open. Lay vent facing and hem allowance on front upper sleeve pieces outward and mitre the corner. Trim allowances of diagonal seam to 5 mm (3/16 in) wide and press open. Stitch hem allowance of back upper sleeve pieces right sides together with lengthwise edges of underlaps. Turn hem allowances and vent facings to inside. Press edges of hem and vent and press allowance on lengthwise edge of underlaps to inside. Stitch front upper sleeve pieces to back upper sleeve pieces, above vent mark (seam number 6). Sew hem allowances in place by hand. Topstitch diagonally at top of vent as marked, catching underlap.

Set in sleeves, easing sleeve caps. Sew shoulder pads in place.

Sew lining: Stitch ease pleat on back lining piece, about 5 cm (2 ins) long at top and bottom, and baste in between. Press pleat to one side. Stitch darts and seams of lining. Set sleeves in lining.

Stitch lining right sides together with inside edge of facing. Press seam allowances onto lining. Stitch inside waistband (not interfaced) to lower edge of facing and lining, from front edges to side seams. Press seam allowances open the width of the facing, then press onto lining pieces.

Press all edges of each band for zip, to wrong side, 7 mm (1/4 in) wide.

Zip, right half of jacket: Separate zip. Pin right half of zip face down on right front facing and inside waistband so that edge of tape meets marked line for zip. Turn in top end of tape. Baste zip tape in place. Pin one band piece over zip tape and edgestitch in place (zipper foot).

Edges of jacket and collar: Pin facing and lining right sides together with jacket, pinning waistband edges together. Stitch along upper edges from marking, front edges and edges of waistband. Leave facing and lining lying right sides together with jacket for now. Lay collar pieces right sides together. Stitch along upper edge of collar, beginning and ending stitching at ends, exactly on seam line of joining edge. Turn collar right side out and press. Lay collar between jacket and facing. Stitch outer collar piece to neck edge, from marking to each corner. Clip seam allowances of fronts in corners. Stitch lengthwise edge of outer collar piece to neck edge of jacket. Stitch inside collar piece to facing, clipping seam allowance of facing into corner. Press seam allowances of collar joining seams open. Turn facing and lining to inside and turn waistband right side out. Press edges. Pin collar joining seams together exactly. Reach between main fabric and lining to grasp seam allowances of collar joining seams and pull them out. Stitch seam allowances together, as far as possible, close to seam. Push collar joining seams back in place again. Place sleeve linings into jacket sleeves.

Pin waistband joining seams together exactly, from front edge to side seam. Reach between main fabric and lining to grasp seam allowances of waistband joining seams and pull them out. Stitch seam allowances together, as far as possible, close to seam. Push waistband joining seams back in place again. Lay back inside edge of waistband flat over joining seam. Work from outer side of jacket to stitch along line of joining seam. Turn in open edge of lining and sew to waistband joining seam.

Zip, left half of jacket: Close zip. Lay right front on left front, matching center fronts and overlapping ends of waistband. Pin unattached zip tape to left front and to waistband. Turn in top end of tape. Baste zip tape in place. Pin band over zip tape and edgestitch in place.

Sew sleeve linings in place: Pin seam of lining to sleeve seam at top of vent on one sleeve, pushing lining up slightly. Turn in lining at vent and pin to underlap edge of back upper sleeve. Lay other edge of lining over vent, trim to 1 cm (3/8 in) before edge of underlap and trim horizontally, 1 cm (3/8 in) below top of vent. Clip diagonally into corner, about 1 cm (3/8 in) long. Turn in lining and pin to vent facing of front upper sleeve. Turn in lower edge of lining and pin to hem allowance. Sew lining in place. Sew lining of second sleeve in same manner.

Cover top halves of snap fasteners with lining fabric. Sew top halves of snaps to right front facing and right end of waistband as marked, not exiting needle on right side of fabric. Close zip. Mark placement of bottom halves of snap fasteners on left front and on left end of waistband. Sew bottom halves of snaps in place.

## Additional Information:

**Burda patterns do not include seam and hem allowances.** We recommend adding 1-2 cm (3/8 - 3/4 inch) for seams and 2-5 cm (3/4 - 2 inch/es) for hems. Refer to your specific pattern instructions for exact measurements.

The fabric requirements are based on the fabric used for the original designs. These amounts will change if you use fabric of a different width. The pattern of the fabric determines whether all the pieces must be cut in the same direction or whether some can be reversed to save fabric.

The cutting layout printed with the instructions shows the best way to place the pattern pieces on our original fabric. Fold the fabric double with the right side facing in. The fabric then has a fold edge and a selvedge edge. When cutting from a single fabric layer, the right side should face up.

Pattern pieces which are shown in the cutting layout with broken outlines should be pinned to the fabric with their printed side facing down.

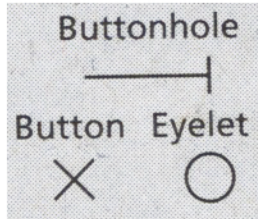
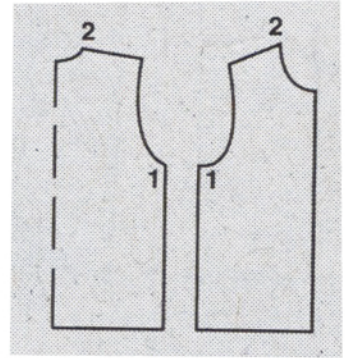
Grey shaded areas in the cutting layout indicate which pieces are to be interfaced.

Transfer the pattern piece lines to the wrong side of your fabric with burda dressmaker's carbon paper. Hand-baste along lines (e.g. for pockets or centre front) to make them visible on the right side of the fabric.

## Key Symbols:

### Seam numbers

show where pattern pieces must be sewn together. Match pieces with the same numbers.



### Seam marks

on long seams. Match the small symbols to one another.



**Presser foot** is the symbol for seam and top-stitching lines.



### Scissors

indicate edges to be cut without seam allowances and also slash lines, e.g. pocket openings.



### Pleat symbol

Fold pleat in direction of arrow.



### Placket/slit mark

Indicates beginning/end of placket/slit.



**Gather**  
**Ease**  
**Stretch**

