

137 Blouse

Burda sizes 36, 38, 40, 42, 44

Back length approx. 60 cm (24 ins)

Materials

Batiste,
width: 140 cm (55 ins)
length: 1.00 – 1.10 – 1.10 – 1.25 – 1.25 m
(1 1/8 – 1 1/4 – 1 1/4 – 1 1/2 – 1 1/2 yds).

Lace trim with one scalloped edge,
width: 5.5 cm (2 1/4 ins)
length: 2.70 – 2.75 – 2.80 – 2.90 – 3.00 m
(3 – 3 1/8 – 3 1/8 – 3 1/4 – 3 3/8 yds).

Loop tape: 0.20 m (1/4 yd).

Approx. 12 small spherical buttons to match loop tape.

Recommended fabrics: Fine, lightweight blouse fabrics.

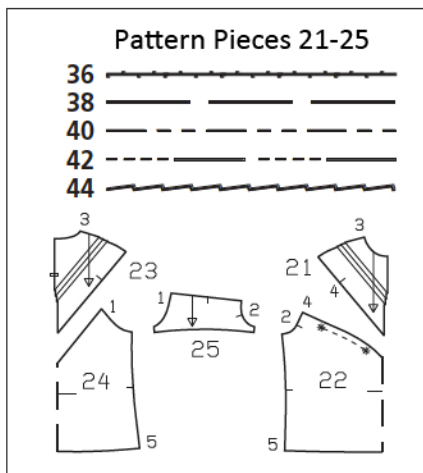
Preparations

Print the pattern out on letter or A4 sized paper. It is **very important** to not scale the document. Your pattern will print on multiple pages, which you will then tile together. Arrange the sheets on a large, hard and flat surface matching up the numbers and letters (i.e. 6A to 6A). Cut or fold one of the sides and match the edge to its corresponding side. Then, tape down in place so paper is secure.

Trace the pattern pieces from the pattern sheet following the lines and markings for style 137 and your size.

burda style magazine patterns do not have seam allowance included.

Seam and hem allowance to be added:
Seams, edges, and hem 1.5 cm (5/8 in).



Fold the fabric as shown in the pattern layout, right side facing in.

Cutting Out

21 front yoke 2x
22 front, on a fold 1x
23 back yoke 2x
24 back, on a fold 1x
25 sleeve 2x

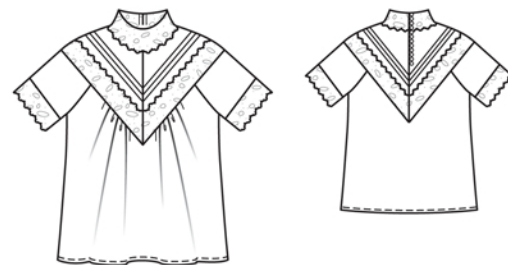
Draft the following piece NOT included in the pattern:
a) bias strip for neck edge, 43 – 44 – 45 – 46 – 47 cm (17 – 17 1/4 – 17 3/4 – 18 1/8 – 18 1/2 ins) long, 3 cm (1 1/4 ins) wide (incl. allowances).

Sewing

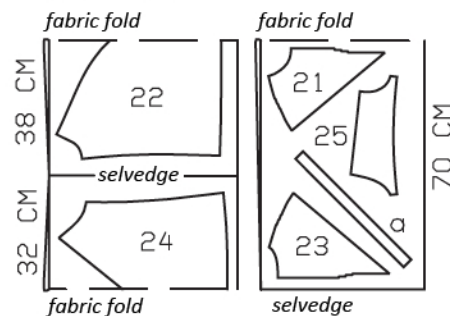
For the sleeves, cut two pieces of lace trim, each 36 – 37 – 39 – 40 – 41 cm (14 1/4 – 14 1/2 – 15 1/2 – 15 3/4 – 16 1/4 ins) long. The lace scallops at start and end of each piece of trim should be equal. Stitch trim to sleeves with straight edge along marked lower edge of sleeve – scalloped edge points down. Press sleeve hem allowance up toward sleeves. Stitch again along straight edge of trim with small zigzag stitches. Trim fabric edge on inside.

Stitch sleeves to front and back (seam numbers 1 and 2). Trim allowances of sleeve attachment seams to 7 mm (1/4 in) wide and neaten together. Press seam allowances toward sleeves.

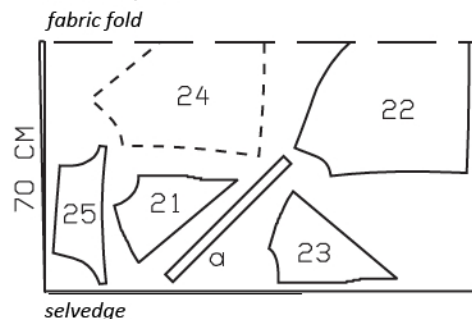
On front and back yoke pieces, hand baste along lines for tucks to make these lines visible on right fabric side. Fold yoke pieces on these lines, wrong side facing in, and press. Topstitch 2 mm (a scant 1/8 in) from fold edges, to form tucks. Press tucks down.



Sizes 36-40



Size 42, 44



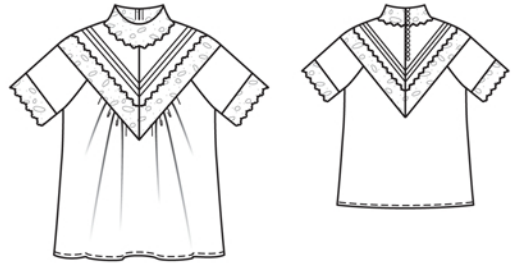
Sewing Continued...

Stitch centre front seam on front yoke. Trim seam allowances, neaten together, and press to one side. Stitch centre seam of back yoke below slit mark. Press seam allowances open and press slit edges to wrong side. Turn under edges of allowances at seam and slit edges to a width of 7 mm (1/4 in) and press. Stitch shoulder seams of yoke. Press seam allowances onto back.

Gather front between each pair of asterisks. Stitch yoke to front, to sleeves, and to back, matching sleeve attachment seams to markings on yokes and matching markings on sleeves to shoulder seams. Clip seam allowance of front and back at centre front and back. Trim allowances of yoke attachment seam to 7 mm (1/4 in) wide, neaten together, and press onto yoke.

From the lace trim, cut two pieces for the front yoke, each 38 – 38 – 38 – 41 – 41 cm (15 – 15 – 15 – 16 1/4 – 16 1/4 ins) long, and two pieces for the back yoke, each 41 – 41 – 41 – 43 – 43 cm (16 1/4 – 16 1/4 – 16 1/4 – 17 – 17 ins) long. Pin pairs of trim together, right sides facing, so that scalloped edges meet. Lay paper pattern pieces 21 and 23 on the trim so that attachment edge of yoke meets straight edge of trim. Mark centre seams and shoulder seams. Stitch centre seams and shoulder seams of trim. Trim seam allowances and press to one side. Lay trim on yoke and pin – straight edge of trim meets yoke attachment seam. Stitch straight edge of trim in place. Sew scalloped edge in place by hand, with small, invisible stitches.

Stitch side seams and sleeve seams as continuous french seams (double seam): First lay fabric pieces together, wrong sides facing, and stitch the 1.5 cm wide seam allowances together, 7 mm (1/4 in) from fabric edge. Press seam allowances open. Then lay pieces together, right sides facing, with the seam exactly along the fold. Now stitch along marked seam line, 8 mm (a generous 1/4 in) from fold edge. Press seam allowances to one side.



Fold bias strip for neck edge lengthwise and press, right side facing out. Pin folded bias strip to neck edge so that fold edge of strip lies on garment piece, 7 mm (1/4 in) past seam line. Stitch along neck edge. Trim seam allowances. Turn bias strip to inside. Topstitch 5 mm (3/16 in) from neck edge.

From the lace trim, cut a piece, 43 – 44 – 45 – 46 – 47 cm (17 – 17 1/4 – 17 3/4 – 18 1/8 – 18 1/2 ins) long, for the collar. Lay trim on neck edge, 1.5 cm (5/8 in) wide, with scalloped edge pointing down. Pin in place, opening seam allowances on back slit edges out flat again to do so. Sew scalloped edge in place by hand, with small stitches.

Pin loop tape to left back slit edge, beginning at upper collar edge, right sides facing – loops lie on garment piece. Fold top end of tape down. Stitch loop tape in place. Turn allowances at slit edges to inside, turn in, and stitch, stitching across lower end of slit. Sew buttons to right back, to match loops.

Turn hem allowance to wrong side, turn raw edge under, and stitch.

Additional Information:

Burda patterns do not include seam and hem allowances. We recommend adding 1-2 cm (3/8 - 3/4 inch) for seams and 2-5 cm (3/4 - 2 inch/es) for hems. Refer to your specific pattern instructions for exact measurements.

The fabric requirements are based on the fabric used for the original designs. These amounts will change if you use fabric of a different width. The pattern of the fabric determines whether all the pieces must be cut in the same direction or whether some can be reversed to save fabric.

The cutting layout printed with the instructions shows the best way to place the pattern pieces on our original fabric. Fold the fabric double with the right side facing in. The fabric then has a fold edge and a selvedge edge. When cutting from a single fabric layer, the right side should face up.

Pattern pieces which are shown in the cutting layout with broken outlines should be pinned to the fabric with their printed side facing down.

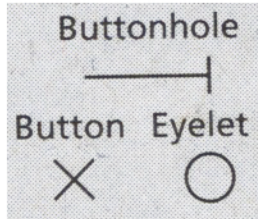
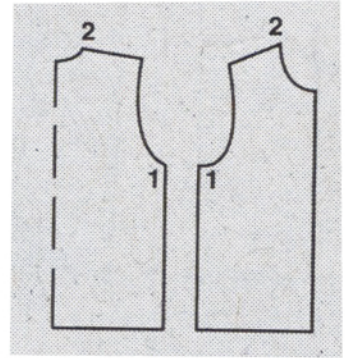
Grey shaded areas in the cutting layout indicate which pieces are to be interfaced.

Transfer the pattern piece lines to the wrong side of your fabric with burda dressmaker's carbon paper. Hand-baste along lines (e.g. for pockets or centre front) to make them visible on the right side of the fabric.

Key Symbols:

Seam numbers

show where pattern pieces must be sewn together. Match pieces with the same numbers.



Seam marks

on long seams. Match the small symbols to one another.



Presser foot is the symbol for seam and top-stitching lines.



Scissors

indicate edges to be cut without seam allowances and also slash lines, e.g. pocket openings.



Pleat symbol

Fold pleat in direction of arrow.



Placket/slit mark

Indicates beginning/ end of placket/slit.



Gather
Ease
Stretch

