

128A Top

Burda sizes 34, 36, 38, 40, 42, 44

Back length: 43 cm (17 ins)

Materials

Knit fabric,
width: 110 cm (44 ins)
length: 0.70 – 0.70 – 0.70 – 0.70 – 1.25 – 1.25 m
(7/8 – 7/8 – 7/8 – 7/8 – 1 1/2 – 1 1/2 yds).

A piece of chiffon for the bias strips, 80 x 55 cm
(32 x 22 ins).

Recommended fabrics: Knit fabrics or jersey.

Preparations

Print the pattern out on letter or A4 sized paper. It is **very important** to not scale the document. Your pattern will print on multiple pages, which you will then tile together. Arrange the sheets on a large, hard and flat surface matching up the numbers and letters (i.e. 6A to 6A). Cut or fold one of the sides and match the edge to its corresponding side. Then, tape down in place so paper is secure.

Trace the pattern pieces from the pattern sheet following the lines and markings for style 128A and your size.

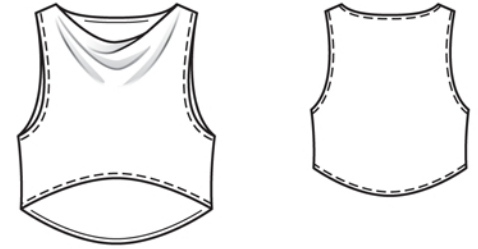
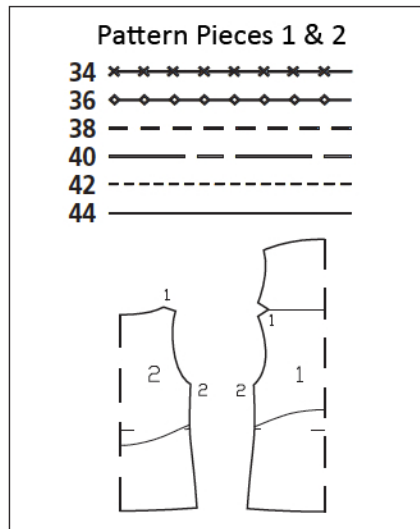
burda style magazine patterns do not have seam allowance included.

Seam and hem allowance to be added:
Seams, edges, and hem 1.5 cm (5/8 in).

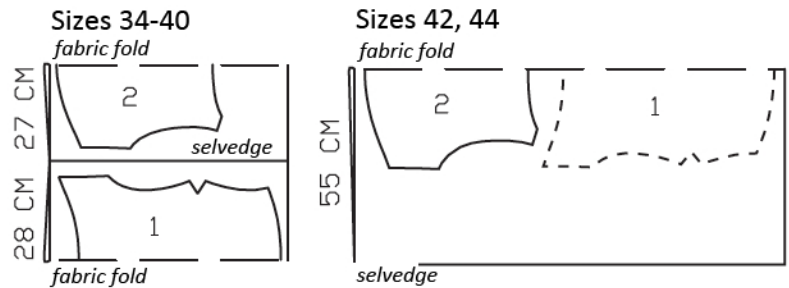
Cutting Out

Knit fabric:
1 front, on a fold 1x
2 back, on a fold 1x

Chiffon: Draft the following pieces,
bias strip for back neck edge, 32 – 33 – 34 – 35 – 36 – 37 cm (12 3/4 – 13 – 13 1/2 – 13 3/4 – 14 1/4 – 14 1/2 ins) long, 4 cm (1 5/8 ins) wide (incl. allowances),
2 bias strips for armholes, 52 – 54 – 55 – 56 – 58 – 59 cm (20 1/2 – 21 1/4 – 21 3/4 – 22 1/4 – 23 – 23 1/4 ins) long, 4 cm (1 5/8 ins) wide (incl. allowances),



bias strip for hem, a total of 97 – 101 – 105 – 108 – 112 – 116 cm (38 1/4 – 39 3/4 – 41 1/2 – 42 1/2 – 44 1/4 – 45 3/4 ins) long, 4 cm (1 5/8 ins) wide (incl. allowances).



Fold the fabric as shown in the pattern layout, right side facing in.

Sewing

Note: Stitch seams on stretch fabrics with a special stretch stitch or at a narrow zigzag setting. Stitch hem allowances with a twin machine needle to keep them elastic.

Back neck edge: Fold bias strip lengthwise and press. Pin folded bias strip to back neck edge so that fold edge of strip lies on garment piece, 1 cm (3/8 in) past seam line. Stitch along neck edge. Trim seam allowances. Turn bias strip to inside and press edge. Topstitch 7 mm (1/4 in) from neck edge.

Shoulder seams: Pin back shoulder edges to front shoulder edges, right sides facing. Lay self-facing of front on back, at fold line, and pin to shoulder edges. Stitch shoulder seams. Trim seam allowances. Pull back out of front. Press shoulder seams but do not press fold edge on front. Baste facing to armhole edges.

Face armhole edges with bias strips as for neck edge. Stitch side seams. Neaten seam allowances together and press onto back. Sew top ends of seam allowances to armholes by hand.

Face hem edge with bias strip, beginning at a side seam and turning under end of strip which lies below.

Additional Information:

Burda patterns do not include seam and hem allowances. We recommend adding 1-2 cm (3/8 - 3/4 inch) for seams and 2-5 cm (3/4 - 2 inch/es) for hems. Refer to your specific pattern instructions for exact measurements.

The fabric requirements are based on the fabric used for the original designs. These amounts will change if you use fabric of a different width. The pattern of the fabric determines whether all the pieces must be cut in the same direction or whether some can be reversed to save fabric.

The cutting layout printed with the instructions shows the best way to place the pattern pieces on our original fabric. Fold the fabric double with the right side facing in. The fabric then has a fold edge and a selvedge edge. When cutting from a single fabric layer, the right side should face up.

Pattern pieces which are shown in the cutting layout with broken outlines should be pinned to the fabric with their printed side facing down.

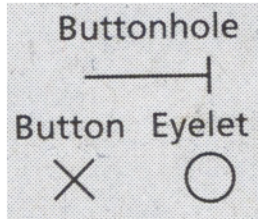
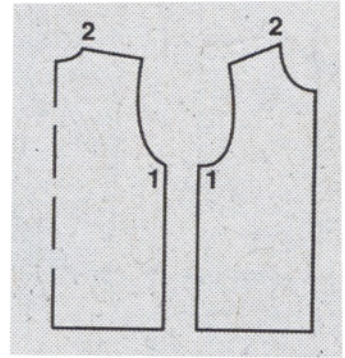
Grey shaded areas in the cutting layout indicate which pieces are to be interfaced.

Transfer the pattern piece lines to the wrong side of your fabric with burda dressmaker's carbon paper. Hand-baste along lines (e.g. for pockets or centre front) to make them visible on the right side of the fabric.

Key Symbols:

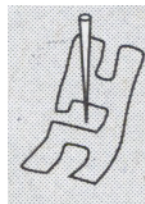
Seam numbers

show where pattern pieces must be sewn together. Match pieces with the same numbers.

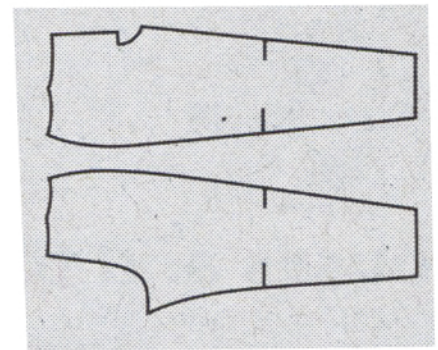


Seam marks

on long seams. Match the small symbols to one another.



Presser foot is the symbol for seam and top-stitching lines.



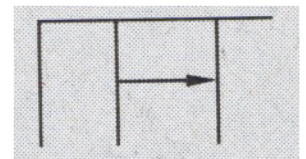
Scissors

indicate edges to be cut without seam allowances and also slash lines, e.g. pocket openings.



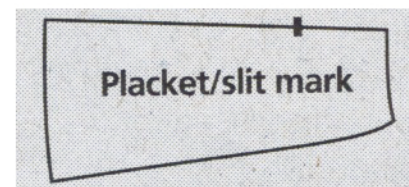
Pleat symbol

Fold pleat in direction of arrow.



Placket/slit mark

Indicates beginning/end of placket/slit.



Gather
Ease
Stretch

