

### 135 Jacket

Burda sizes 36, 38, 40, 42, 44

Back length approx. 55 cm (22 ins)

### Materials

Textured fabric,  
width: 145 cm (57 ins)  
length: 1.65 – 1.65 – 1.70 – 1.70 – 1.70m (1 7/8 yds).

Lining,  
width: 140 cm (55 ins)  
length: 1.25 – 1.25 – 1.30 – 1.30 – 1.30m (1 1/2 yds).

Interfacing.

Fusible batting.

1 separating two-way zip, 55 – 55 – 60 – 60 – 60 cm (22 – 22 – 24 – 24 – 24 ins) long.

2 hammer-on snap fasteners.

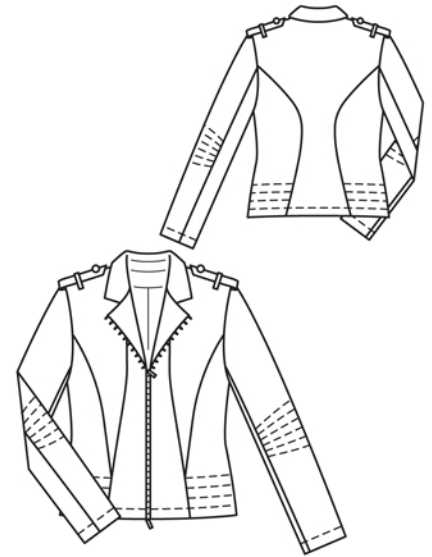
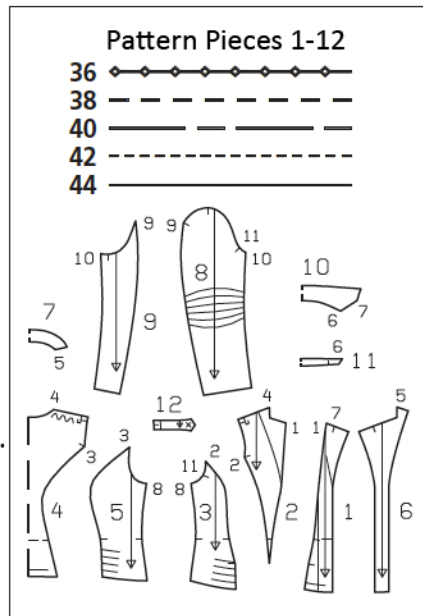
Recommended fabrics: Jacket fabrics with some body, of wool or blends.

### Preparations

Print the pattern out on letter or A4 sized paper. It is very important to not scale the document. Your pattern will print on multiple pages, which you will then tile together. Arrange the sheets on a large, hard and flat surface matching up the numbers and letters (i.e. 6A to 6A). Cut or fold one of the sides and match the edge to its corresponding side. Then, tape down in place so paper is secure.

Trace the pattern pieces from the pattern sheet following the lines and markings for style 135 and your size. The loop markings on pieces 2 and 4 are for size 36. For the other sizes, remark the loops according to the size lines.

Centre front lining piece: Lay pieces 1 and 2 together. Pointed bottom end of piece 2 meets bottom marking on piece 1 and lining lines meet at bust level. The small space which forms in between can be ignored. Trace centre front lining piece, up to lining line.

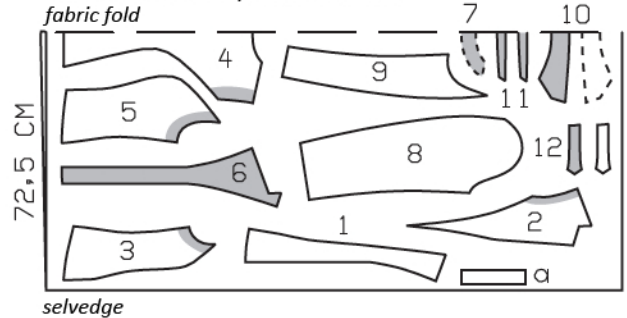


**burda style magazine patterns do not have seam allowance included.**

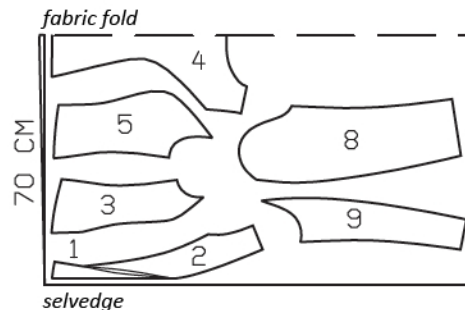
Seam and hem allowance to be added:

Seams and edges 1.5 cm (5/8 in), hem and sleeve hems 4 cm (1 5/8 ins), lining 1.5 cm (5/8 in).

Textured Fabric, 145cm wide



Lining, 140cm wide



Cut from a double layer of fabric, right side facing in.

## Cutting Out

Textured fabric:

- 1 centre front 2x
- 2 middle front piece 2x
- 3 side front 2x
- 4 centre back, on a fold 1x
- 5 side back 2x
- 6 front facing 2x
- 7 back facing, on a fold 1x
- 8 upper sleeve 2x
- 9 under sleeve 2x
- 10 collar, on a fold 2x
- 11 collar stand, on a fold 2x
- 12 shoulder tab 4x

Draft the following pieces NOT included in the pattern:

- a) 2 loops, a total of 18 cm (7 1/8 ins) long, 4 cm (1 5/8 ins) wide (incl. allowances).

Lining: pieces 1 and 2 placed together (see "Preparation"); piece 4 minus width of facing and with an ease pleat of approx. 2 cm (3/4 in) at centre back; pieces 3, 5, 8, and 9.

Interfacing: See shaded area on pattern layout. Also interface hem allowances.

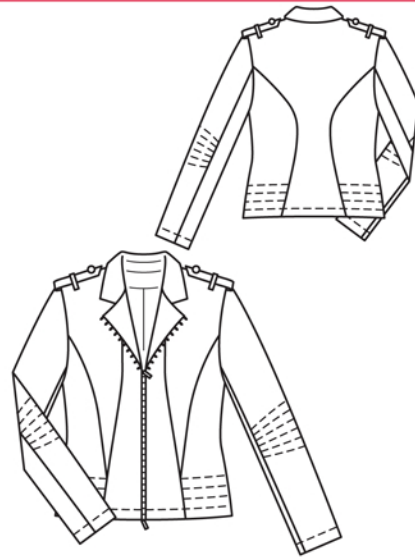
Batting: Iron batting to wrong side of side front and back pieces above hem line, 10 cm (4 ins) high. On upper sleeves, iron batting to wrong side, over marked stitching lines, so that batting extends 1 cm (3/8 in) past upper and lower lines.

## Sewing

Stitch middle front pieces to side front pieces. Topstitch middle front pieces close to seams. Stitch centre fronts to middle front pieces and stitch centre fronts to side fronts, below middle pieces. Topstitch centre fronts along seams. Stitch side backs to centre back. Topstitch centre back along seams.

Stitch side seams, shoulder seams, and facing seams. Press seam allowances open.

Fold loop strip lengthwise, right side facing in. Stitch 1 cm (3/8 in) from fold edge. Turn right side out. Topstitch close to edges. Cut into 2



equal pieces. Turn loops ends under, finished length = 5 cm (2 ins). Lay each loop across a shoulder seam. Edgestitch ends of loops in place.

Lay each interfaced tab piece on tab piece with no interfacing, right sides together. Stitch together along long edges and pointed end of tab. Turn right side out. Topstitch tabs close to edges. Slip tabs through shoulder loops and baste to armhole edges.

For sizes 36, 40, 42, and 44, shorten zip at top end: Measure and mark required length on zip. Use pliers to remove surplus teeth. If your zip is of metal, reattach the stoppers and press firmly to secure. The stoppers of a plastic zip cannot be reused. In this case, sew heavy thread bars across the top of the zip to prevent the slider from slipping off. Trim away zip tapes 2 cm (3/4 in) above teeth of zip

Separate zip. Turn in top ends of zip tapes. Pin halves of zip face down on front edges (right fabric side), beginning at corner of lapel, so that teeth of zip lie on garment piece and zip tape lies on the seam allowance. Stitch zip tapes to seam allowances.

Notched collar and front edges: Pin facing to jacket, right sides together. Pin lapel fold lines together. Build a little extra fullness into corners of lapels. Stitch facing to edges of lapels, from marking, and to front edges. Leave facing lying on jacket, right sides together, for the time being. Stitch collar stand pieces to collar pieces. Trim seam allowances and press open. Topstitch close to each side of seams. Stitch collar pieces together on outer edges, building a little extra fullness into top collar and beginning and ending exactly at seam line of attachment edge. Turn collar right side out. Lay collar between jacket and facing. Stitch undercollar to neck edge of jacket, from each marking to corner. Clip seam allowances of fronts into corners. Stitch long edge of undercollar to neck edge of jacket. Stitch top collar to facing. Clip seam allowances of facing into corners. Press seam allowances of collar attachment seams open. Turn facing to inside. Pin collar attachment seams together exactly. Turn back facing up and stitch seam allowances together, close to collar attachment seam. Turn facing down again.

## Sewing Continued...

At hem edge, unfold facings forward again. Turn hem allowance to inside, baste, and press. Topstitch 2.2 cm (a scant inch) from hem edge. Turn facings to inside and sew to hem allowance.

Topstitch close to front edges and edges of lapels and collar. Above stitching for hem, topstitch side front and back pieces 3 more times, spaced 2.2 cm (a scant inch) apart.

On upper sleeves, hand baste along topstitching lines to make these lines visible on right fabric side. Topstitch upper sleeves as marked. Stitch sleeve seams. Press sleeve hem allowances to inside and stitch in place, 2.2 cm (a scant inch) from lower sleeve edge.

Set in sleeves.

Fasten shoulder tabs to shoulder seams with one snap each so that tabs extend past sleeve inset seams by 2 cm (3/4 in).

**Sew lining:** On lining back, stitch ease pleat along centre back, approx. 5 cm (2 ins) long, at both top and bottom, and baste pleat in between. Press pleat to one side. Stitch seams of lining. Set in sleeve linings.

**Sew lining in jacket:** Stitch lining to inside facing edge, right sides together, leaving approx. 8 cm (3 1/4 ins) open at lower edge. Lay lining inside jacket, with wrong sides facing, pulling linings into sleeves. Above jacket hem, pin a fold, approx. 1 cm (3/4 in) deep, in lining. Turn in lower lining edges and sew to hem allowance. Remove pins. Lay extra length of lining down and press lightly. Sew remaining front lining edges to facing.

## Additional Information:

**Burda patterns do not include seam and hem allowances.** We recommend adding 1-2 cm (3/8 - 3/4 inch) for seams and 2-5 cm (3/4 - 2 inch/es) for hems. Refer to your specific pattern instructions for exact measurements.

The fabric requirements are based on the fabric used for the original designs. These amounts will change if you use fabric of a different width. The pattern of the fabric determines whether all the pieces must be cut in the same direction or whether some can be reversed to save fabric.

The cutting layout printed with the instructions shows the best way to place the pattern pieces on our original fabric. Fold the fabric double with the right side facing in. The fabric then has a fold edge and a selvedge edge. When cutting from a single fabric layer, the right side should face up.

Pattern pieces which are shown in the cutting layout with broken outlines should be pinned to the fabric with their printed side facing down.

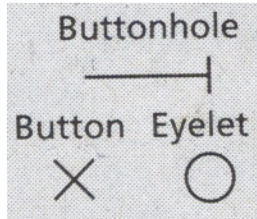
Grey shaded areas in the cutting layout indicate which pieces are to be interfaced.

Transfer the pattern piece lines to the wrong side of your fabric with burda dressmaker's carbon paper. Hand-baste along lines (e.g. for pockets or centre front) to make them visible on the right side of the fabric.

## Key Symbols:

### Seam numbers

show where pattern pieces must be sewn together. Match pieces with the same numbers.

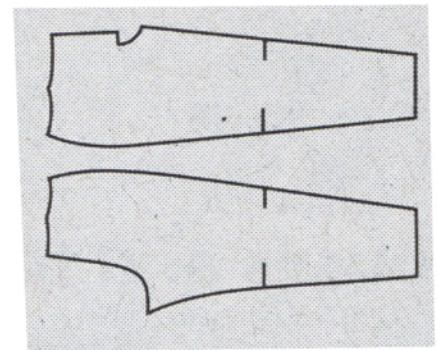


### Seam marks

on long seams. Match the small symbols to one another.



**Presser foot** is the symbol for seam and top-stitching lines.



### Scissors

indicate edges to be cut without seam allowances and also slash lines, e. g. pocket openings.



### Pleat symbol

Fold pleat in direction of arrow.



### Placket/slit mark

Indicates beginning/ end of placket/slit.



**Gather**  
**Ease**  
**Stretch**

