

131 Dress

Burda sizes 36, 38, 40, 42, 44

Length from waist 65 cm (25 3/4 ins)

Materials

Viscose/rayon challis,
width: 140 cm (55 ins)
length: 2.30 m (2 5/8 yds) for all sizes.

Interfacing.

1 invisible zip, 60 cm (24 ins) long.

Recommended fabrics: Lightweight, softly draping dress fabrics.

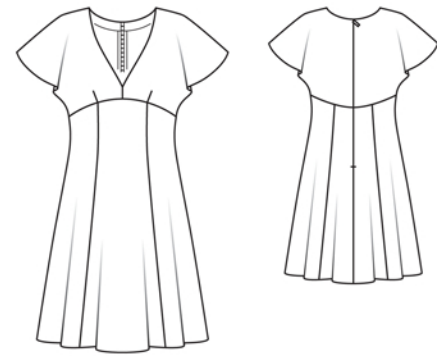
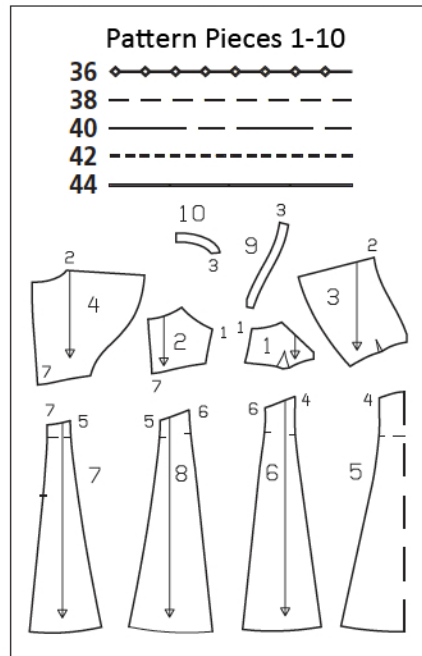
Preparations

Print the pattern out on letter or A4 sized paper. It is **very important** to not scale the document. Your pattern will print on multiple pages, which you will then tile together. Arrange the sheets on a large, hard and flat surface matching up the numbers and letters (i.e. 6A to 6A). Cut or fold one of the sides and match the edge to its corresponding side. Then, tape down in place so paper is secure.

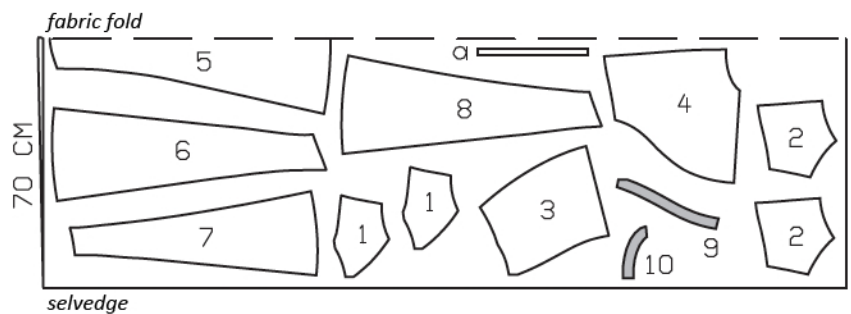
Trace the pattern pieces from the pattern sheet following the lines and markings for style 131 and your size.

burda style magazine patterns do not have seam allowance included.

Seam and hem allowance to be added:
Seams, edges, and hem 1.5 cm (5/8 in).



Cut from a double layer of fabric, right side facing in.



Cutting Out

- 1 inside front 4x
- 2 inside back 4x
- 3 front with integrated sleeve 2x
- 4 back with integrated sleeve 2x
- 5 centre front skirt panel,
on a fold 1x
- 6 side front skirt panel 2x
- 7 centre back skirt panel 2x
- 8 side back skirt panel 2x
- 9 front neck facing 2x
- 10 back neck facing 2x

Draft the following piece NOT included in the pattern:

a) 2 straps, 31 – 32 – 32 – 33 – 33 cm (12 1/4 – 12 3/4 – 12 3/4 – 13 – 13 ins)
long, 2 cm (3/4 in) wide, finished width 1 cm (3/8 in).

Interfacing: See shaded area on pattern layout. Also iron strips of interfacing, 1 cm (3/8 in) wide, to wrong side of front shoulder seam edges and zip slit edges.

Sewing

Stitch centre seam on inside fronts, beginning at upper edge, exactly on marked neck edge. Stitch front darts and press toward centre. Stitch side seams of inside pieces (seam number 1). Press seam allowances open. Pin inside front and back pieces to outer pieces, right sides together. Stitch along neck and armhole edges. Trim seam allowances. Turn right side out and press edges. Baste along back and lower edges.

Fold straps lengthwise, right side facing in. Stitch along long edges and across one end of each. Turn straps right side out. Sew seamed front strap ends to inner side of front corners of neck edge. Pin back strap ends under back corners of neck edge.

Lay fronts with integrated sleeves together, right sides facing. Stitch centre front seam, beginning exactly at marked point of neck edge. Press seam allowances open. Stitch front darts and press toward centre. Stitch shoulder seams (seam number 2).

Stitch centre front seam on facing, beginning at upper edge, exactly at marked neck edge. Stitch shoulder seams of facing. Stitch facing to neck edge, right sides together. Trim seam allowances. Turn facing up and stitch to seam allowances, close to seam. Turn facing to inside and press edges. Baste facing to lower edge.

Finish sleeve edges with closely spaced zigzag stitching: Press allowance to wrong fabric side. Work from right side of fabric to stitch along fold edge with closely spaced zigzag stitching. On inside, trim allowance close to stitching.

Lay front and back pieces on inside unit, with wrong side facing right side, and baste lower edges together, matching sleeve edges to side seams. Baste back edges together.

n Stitch section seams and side seam of skirt. Stitch skirt to bodice. Press seam allowances down.



On back pieces, turn neck facing up again. Sew invisible zip to back slit edges, see the “Helpful Hint” on next page. Stitch centre back seam from lower edge to zip. Turn facing down again, turn edges under, and sew to zip tapes. Sew inside facing edge to shoulder seams.

Finish hem edge with closely spaced zigzag stitching.

Try on dress, and sew back ends of straps in place.



These special zippers come in various lengths. The zipper should be at least 2 cm (3/4 in) longer than the slit. It is sewn in place before the seam below the slit is stitched. A special presser foot is required to sew the zipper in place.

Sewing the zipper in place:

Open the zipper and push the coil back with your thumbnail to reveal the seam marking between the tape and the coil. Place the open zipper right side down on the right fabric side of one slit edge.

In order to stitch the zipper in place exactly along the marked seam line, you must first calculate the distance between the tape edge and the fabric edge as follows: width of seam allowance minus 1 cm (3/8 in) tape width = distance from edge of fabric. This will yield a value of 5 mm (3/16 in) if the width of the seam allowance is 1.5 cm (5/8 in).

Pin the top end of the zipper tape in place, the calculated distance from the edge of the fabric. The bottom end of the zipper will extend past the marked end of the slit. Place the presser foot on the zipper so that the coil is in the notch to the right of the needle (1). Stitch zipper in place, from the top to the marked end of the slit. Close zipper.

Place the other zipper tape face down on the opposite slit edge and pin in place at the top. Open zipper again. Place the presser foot on the top end of the zipper so that the coil is in the notch to the left of the needle (2). Sew the zipper in place, from the top to the end of the slit. Close zipper.

Now stitch the seam below the zipper, from bottom to top. Turn the loose lower end of the zipper out of the way, over the seam allowance. Stitch as close as possible to the last stitches of the zipper seams. Trim away excess zipper and bind the end with a scrap of fabric.

Additional Information:

Burda patterns do not include seam and hem allowances. We recommend adding 1-2 cm (3/8 - 3/4 inch) for seams and 2-5 cm (3/4 - 2 inch/es) for hems. Refer to your specific pattern instructions for exact measurements.

The fabric requirements are based on the fabric used for the original designs. These amounts will change if you use fabric of a different width. The pattern of the fabric determines whether all the pieces must be cut in the same direction or whether some can be reversed to save fabric.

The cutting layout printed with the instructions shows the best way to place the pattern pieces on our original fabric. Fold the fabric double with the right side facing in. The fabric then has a fold edge and a selvedge edge. When cutting from a single fabric layer, the right side should face up.

Pattern pieces which are shown in the cutting layout with broken outlines should be pinned to the fabric with their printed side facing down.

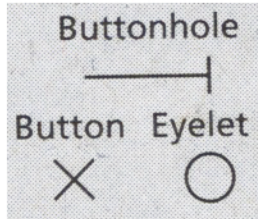
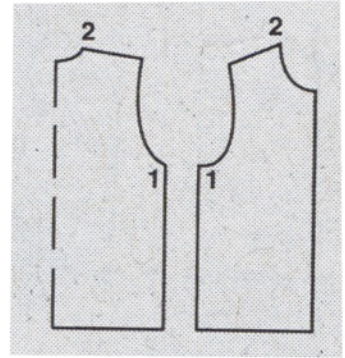
Grey shaded areas in the cutting layout indicate which pieces are to be interfaced.

Transfer the pattern piece lines to the wrong side of your fabric with burda dressmaker's carbon paper. Hand-baste along lines (e.g. for pockets or centre front) to make them visible on the right side of the fabric.

Key Symbols:

Seam numbers

show where pattern pieces must be sewn together. Match pieces with the same numbers.



Seam marks

on long seams. Match the small symbols to one another.



Presser foot is the symbol for seam and top-stitching lines.



Scissors

indicate edges to be cut without seam allowances and also slash lines, e.g. pocket openings.



Pleat symbol

Fold pleat in direction of arrow.



Placket/slit mark

Indicates beginning/ end of placket/slit.



Gather
Ease
Stretch

