

109 Skirt

Burda sizes 34, 36, 38, 40, 42, 44,
Skirt length 60 cm (23 3/4 ins)
(upper waistband edge = waist)

Materials

Cotton lace fabric with two equal scalloped edges,
width: 125 cm (49 ins)
length: 0.65 – 0.65 – 0.70 – 0.70 – 0.75 – 0.75 m
(7/8 yd).

Lining,
width: 140 cm (55 ins)
length: 0.70 m (7/8 yd) for all sizes.

Petersham ribbon (for waistband), 1.5 cm (5/8 in)
wide and 1.45 – 1.55 – 1.60 – 1.70 – 1.80 – 1.85 m
(1 3/4 – 1 3/4 – 1 3/4 – 1 7/8 – 2 – 2 1/8 yds) long.

1 invisible zip, 22 cm (9 ins) long,.

Recommended fabrics: Lace fabric with two equal
scalloped edges.

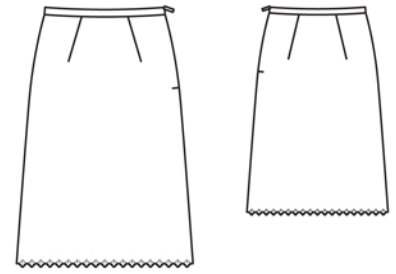
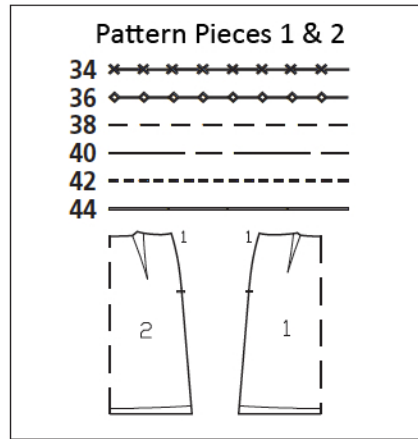
Preparations

Print the pattern out on letter or A4 sized paper.
It is **very important** to not scale the document.
Your pattern will print on multiple pages, which
you will then tile together. Arrange the sheets on
a large, hard and flat surface matching up the
numbers and letters (i.e. 6A to 6A). Cut or fold
one of the sides and match the edge to it's cor-
responding side. Then, tape down in place so paper
is secure.

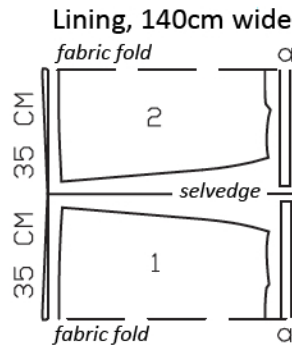
Trace the pattern pieces from the pattern sheet
following the lines and markings for style 109 and
your size.

**burda style magazine patterns do not have seam
allowance included.**

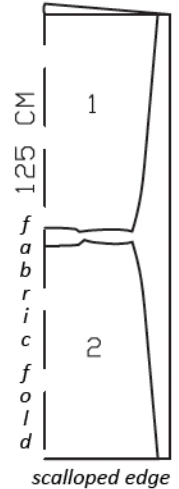
Seam and hem allowance to be added:
Seams and edges 1.5 cm (5/8 in), lining hem 3 cm
(1 1/4 ins), no allowances on lower edges of lace
skirt panels. Lay paper pattern pieces for skirt
panels on scalloped edge of lace fabric.



Cotton Lace,
125cm wide
scalloped edge



Fold lace fabric and
lining as shown in
the pattern layout,
right side facing in.
Pin scalloped edges
together exactly.



Cutting Out

Lace fabric:
1 front skirt panel, on a fold 1x
2 back skirt panel, on a fold 1x

Lining:
1 front skirt panel, on a fold 1x
2 back skirt panel, on a fold 1x

Draft the following piece NOT included in the pattern:
a) 2 backing strips for side seams, 65 cm (25 3/4 ins) long, 3 cm (1 1/4 ins)
wide (incl. allowances).

Sewing

Stitch front and back darts. Press darts toward centre.

n

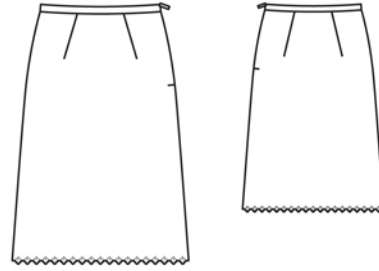
Lay a backing strip on wrong side of right side seam edge of back skirt panel and pin, folding bottom end up. Lay front skirt panel on back skirt panel, right sides together. Stitch side seam. Lay backing strip on seam allowance and press. Neaten edges of seam allowances and strip together and press onto back.

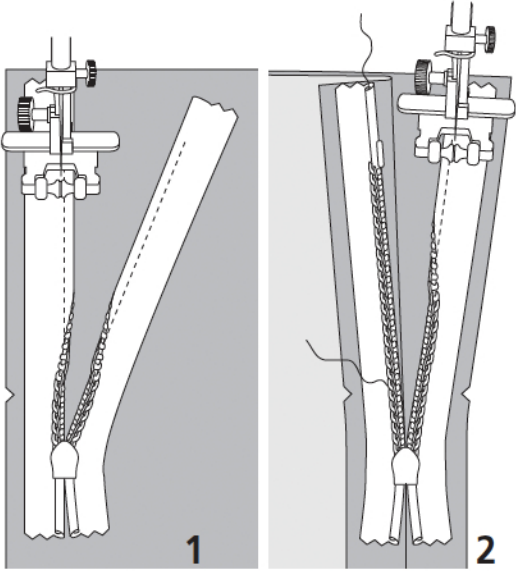
Stitch darts and right side seam of lining. Lay skirt lining on skirt of main fabric, with right side facing wrong side. Baste to upper skirt edge and to side slit edges.

For the waistband, cut two pieces of petersham ribbon, each 72 – 75 – 80 – 84 – 87 – 92 cm (28 1/2 – 29 3/4 – 31 1/2 – 33 – 34 1/4 – 36 1/4 ins) long – this includes 1.5 cm (5/8 in) seam allowance at each end. Lay one piece of petersham ribbon on outer side of seam allowance on upper skirt edge and pin, slightly easing upper skirt edge. Baste lower ribbon edge in place. Pin second piece of petersham ribbon to waistband on inside. Work from right side to topstitch waistband close to both edges.

Sew invisible zip to waistband and left slit edges, see the “Helpful Hint” on next page. Leave top ends of zip tapes extending at upper waistband edge. Clip seam allowances of skirt at end of slit. Lay second backing strip on wrong side of left side seam edge of back skirt panel and pin. Trim strip at bottom end of slit. Stitch left skirt side seam from lower edge to zip. Neaten seam and press as described for right seam. Stitch lining seam. Turn in top ends of zip tapes and sew to waistband, together with seam allowances.

Turn lining hem allowance to inside, turn raw edge under, and stitch.





These special zippers come in various lengths. The zipper should be at least 2 cm (3/4 in) longer than the slit. It is sewn in place before the seam below the slit is stitched. A special presser foot is required to sew the zipper in place.

Sewing the zipper in place:

Open the zipper and push the coil back with your thumbnail to reveal the seam marking between the tape and the coil. Place the open zipper right side down on the right fabric side of one slit edge.

In order to stitch the zipper in place exactly along the marked seam line, you must first calculate the distance between the tape edge and the fabric edge as follows: width of seam allowance minus 1 cm (3/8 in) tape width = distance from edge of fabric. This will yield a value of 5 mm (3/16 in) if the width of the seam allowance is 1.5 cm (5/8 in).

Pin the top end of the zipper tape in place, the calculated distance from the edge of the fabric. The bottom end of the zipper will extend past the marked end of the slit. Place the presser foot on the zipper so that the coil is in the notch to the right of the needle (1). Stitch zipper in place, from the top to the marked end of the slit. Close zipper.

Place the other zipper tape face down on the opposite slit edge and pin in place at the top. Open zipper again. Place the presser foot on the top end of the zipper so that the coil is in the notch to the left of the needle (2). Sew the zipper in place, from the top to the end of the slit. Close zipper.

Now stitch the seam below the zipper, from bottom to top. Turn the loose lower end of the zipper out of the way, over the seam allowance. Stitch as close as possible to the last stitches of the zipper seams. Trim away excess zipper and bind the end with a scrap of fabric.

Additional Information:

Burda patterns do not include seam and hem allowances. We recommend adding 1-2 cm (3/8 - 3/4 inch) for seams and 2-5 cm (3/4 - 2 inch/es) for hems. Refer to your specific pattern instructions for exact measurements.

The fabric requirements are based on the fabric used for the original designs. These amounts will change if you use fabric of a different width. The pattern of the fabric determines whether all the pieces must be cut in the same direction or whether some can be reversed to save fabric.

The cutting layout printed with the instructions shows the best way to place the pattern pieces on our original fabric. Fold the fabric double with the right side facing in. The fabric then has a fold edge and a selvedge edge. When cutting from a single fabric layer, the right side should face up.

Pattern pieces which are shown in the cutting layout with broken outlines should be pinned to the fabric with their printed side facing down.

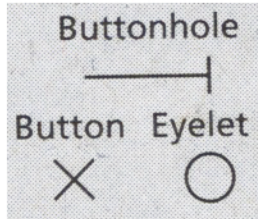
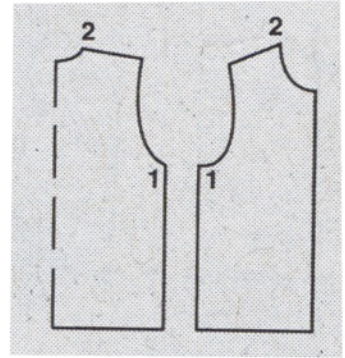
Grey shaded areas in the cutting layout indicate which pieces are to be interfaced.

Transfer the pattern piece lines to the wrong side of your fabric with burda dressmaker's carbon paper. Hand-baste along lines (e.g. for pockets or centre front) to make them visible on the right side of the fabric.

Key Symbols:

Seam numbers

show where pattern pieces must be sewn together. Match pieces with the same numbers.



Seam marks

on long seams. Match the small symbols to one another.



Presser foot is the symbol for seam and top-stitching lines.



Scissors

indicate edges to be cut without seam allowances and also slash lines, e.g. pocket openings.



Pleat symbol

Fold pleat in direction of arrow.



Placket/slit mark

Indicates beginning/ end of placket/slit.



Gather
Ease
Stretch

