

### 102 Jacket

Burda sizes 36, 38, 40, 42, 44

Back length approx. 60 cm (24 ins)

3/4-sleeves, approx. 48 cm (19 ins) long

### Materials

**Bouclé,**  
width: 150 cm (59 ins)  
length: 1.60 – 1.60 – 1.65 – 1.65 – 1.65 m  
(1 3/4 – 1 3/4 – 1 7/8 – 1 7/8 – 1 7/8 yds).

**Lining,**  
width: 140 cm (55 ins)  
length: 1.00 – 1.05 – 1.05 – 1.10 – 1.10 m  
(1 1/8 – 1 1/4 – 1 1/4 – 1 1/4 – 1 1/4 yds).

**Interfacing.**

2 fabric-covered buttons.

Shoulder pads and a small piece of batting.

**Recommended fabrics:** Jacket fabrics. Use only fabrics which can be easily frayed, to make fringe

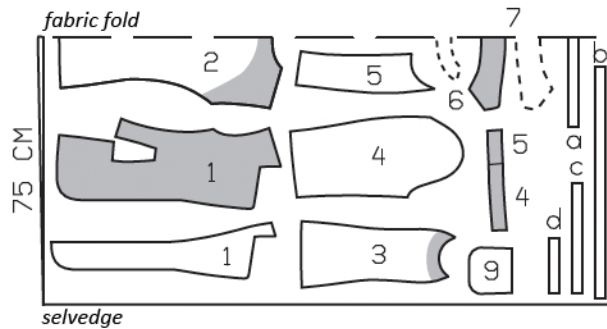
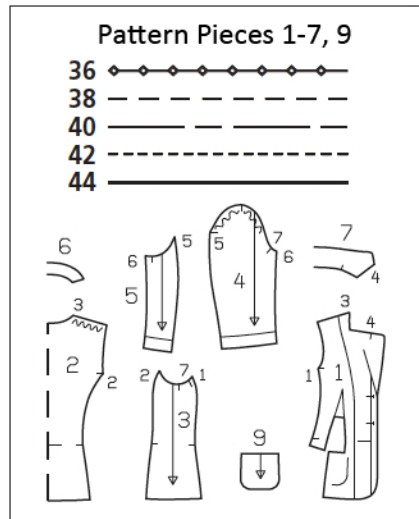
### Preparations

Print the pattern out on letter or A4 sized paper. It is **very important** to not scale the document. Your pattern will print on multiple pages, which you will then tile together. Arrange the sheets on a large, hard and flat surface matching up the numbers and letters (i.e. 6A to 6A). Cut or fold one of the sides and match the edge to its corresponding side. Then, tape down in place so paper is secure.

Trace the pattern pieces from the pattern sheet following the lines and markings for style 102 and your size. Trace the front facing from piece 1 as a separate pattern piece. Trace the sleeve facings from pieces 4 and 5 as separate pattern pieces. Glue sleeve facings together (back sleeve seam).

**burda style magazine patterns do not have seam allowance included.**

**Seam and hem allowance to be added:**  
Seams and edges 1.5 cm (5/8 in), at dart 1 cm (3/8 in), hem 4 cm (1 5/8 ins), lining 1.5 cm (5/8 in).



Cut from a double layer of fabric, right side facing in.

### Cutting Out

**Bouclé:**

- |                      |                             |
|----------------------|-----------------------------|
| 1 front 2x           | 5 under sleeve 2x           |
| front facing 2x      | 4 + 5 sleeve facing 2x      |
| 2 back, on a fold 1x | 6 back facing, on a fold 1x |
| 3 side piece 2x      | 7 collar, on a fold 2x      |
| 4 upper sleeve 2x    | 9 pocket 2x                 |

**Draft the following pieces NOT included in the pattern:**

- 1 fringe strip for collar, 50 – 51 – 52 – 53 – 54 cm (19 3/4 – 20 1/4 – 20 1/2 – 21 – 21 1/4 ins) long, 3 cm (1 1/4 ins) wide (incl. allowances),
- 2 fringe strips for front edges and lapels, 65 – 66 – 67 – 68 – 69 cm (25 3/4 – 26 – 26 1/2 – 26 3/4 – 27 1/4 ins) long, 3 cm (1 1/4 ins) wide (incl. allowances),
- 2 fringe strips for lower sleeve edges, 31 – 32 – 33 – 34 – 35 cm (12 1/4 – 12 3/4 – 13 – 13 1/2 – 13 3/4 ins) long, 3 cm (1 1/4 ins) wide (incl. allowances),
- 2 fringe strips for pocket openings, 15 cm (6 ins) long, 3 cm (1 1/4 ins) wide (incl. allowances).

**Lining:** piece 1 minus width of facing; piece 2 minus width of facing and with an ease pleat of approx. 2 cm (3/4 in) at centre back; pieces 3 to 5 and 9.

**Interfacing:** See shaded area on pattern layout. Also interface hem allowances of jacket.

## Sewing

Stitch bust darts. Clip diagonally into allowance at bottom of darts. Press darts open, pressing points of darts flat. Then stitch horizontal edges of fronts together, right sides facing. Press seam allowances open.

Stitch side pieces to front and back pieces. Stitch shoulder seams on jacket and on facing. Press seam allowances open.

**Fringe strips:** Stitch at a small zigzag setting, 1.5 cm (5/8 in) from one lengthwise edge. Draw out fabric threads up to stitching to fringe this edge.

**Baste fringe strips** to front edges and edges of lapels so that fringe lies on garment piece and non-fringed edge lies on seam allowance. Begin at bottom, 1 cm (3/8 in) before centre front and end at marking on lapels. At corners of lapels, make a small fold in strip and clip unfringed edge. Baste fringe strip to outer edges of top collar piece, at each corner making a fold and clipping unfringed edge.

**Notched collar, front edges and hem:** Pin facing right sides together with jacket. Build a little extra fullness into corners of lapels. Stitch facing along hem edges, front edges and lapel edges, up to marking, at hem edge leaving last 3 cm (1 1/4 ins) open, before facing ends. Leave facing lying right sides together with jacket for now. Stitch collar pieces together along outer edges, building a little extra fullness into top collar. Begin and end stitching at narrow edges, exactly on seam line of attachment edge. Turn collar right side out. Lay collar between jacket and facing. Stitch undercollar to jacket neck edge, from each marking to corner. Clip seam allowances of fronts into corners. Stitch lengthwise edge of undercollar to jacket neck edge. Stitch top collar to facing. Clip allowance of facing into corners. Press seam allowances of collar attachment seams open. Turn facing to inside. Press hem allowance to inside and sew in place by hand. Pin collar attachment seams together exactly. Turn back facing up and stitch seam allowances together, close to collar attachment seam. Turn facing down.



Stitch sleeve seams, including those on facings. Baste fringe strips to lower sleeve edges. Stitch sleeve facings right sides together with lower sleeve edges. Turn facings to inside. Sew inside edges in place by hand.

Set in sleeves, easing sleeve caps. Sew shoulder pads in place. Lay strips of batting, approx. 4 cm (1 5/8 ins) wide, under sleeve caps and sew to seam allowances.

**Patch pockets:** Baste fringe strips to upper pocket edges. Stitch pocket pieces of main fabric and lining right sides together, leaving a section of seam open, for turning. Turn pockets right side out. Sew openings closed. Pin pockets to jacket at placement lines and sew in place by hand.

**Construct lining:** On lining back, stitch ease pleat at top and bottom, each approx. 5 cm (2 ins) long, and baste in between. Press pleat to one side. Stitch darts and seams of lining. Set in sleeve linings.

**Sew lining in jacket:** Stitch lining to inside facing edge, laying lower facing edges down. Lay lining inside jacket with wrong sides together, pulling linings into sleeves. Turn in lining along hem edge, press fold edge lightly, push upward in a shallow curve, and pin to hem allowance. Sew facings and lining in place. Lay extra length of lining down and press lightly. Above sleeve hems, pin a fold, approx. 1 cm (3/8 in) deep, in lining. Turn in sleeve lining and sew to facing.

Work buttonholes in right front. At front edges, trim bottom end of fringe tapered toward hem edge.

## Additional Information:

**Burda patterns do not include seam and hem allowances.** We recommend adding 1-2 cm (3/8 - 3/4 inch) for seams and 2-5 cm (3/4 - 2 inch/es) for hems. Refer to your specific pattern instructions for exact measurements.

The fabric requirements are based on the fabric used for the original designs. These amounts will change if you use fabric of a different width. The pattern of the fabric determines whether all the pieces must be cut in the same direction or whether some can be reversed to save fabric.

The cutting layout printed with the instructions shows the best way to place the pattern pieces on our original fabric. Fold the fabric double with the right side facing in. The fabric then has a fold edge and a selvedge edge. When cutting from a single fabric layer, the right side should face up.

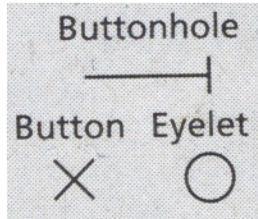
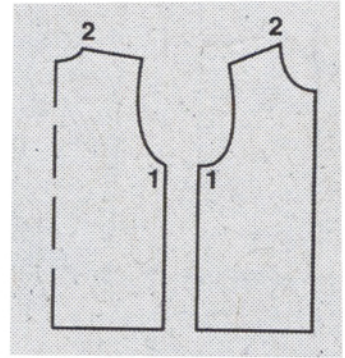
Pattern pieces which are shown in the cutting layout with broken outlines should be pinned to the fabric with their printed side facing down.

Grey shaded areas in the cutting layout indicate which pieces are to be interfaced.

Transfer the pattern piece lines to the wrong side of your fabric with burda dressmaker's carbon paper. Hand-baste along lines (e.g. for pockets or centre front) to make them visible on the right side of the fabric.

## Key Symbols:

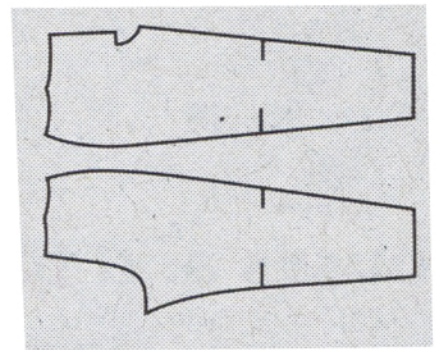
**Seam numbers**  
show where pattern pieces must be sewn together. Match pieces with the same numbers.



**Seam marks**  
on long seams. Match the small symbols to one another.



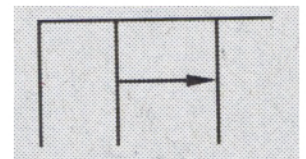
**Presser foot**  
is the symbol for seam and top-stitching lines.



**Scissors**  
indicate edges to be cut without seam allowances and also slash lines, e.g. pocket openings.



**Pleat symbol**  
Fold pleat in direction of arrow.



**Placket/slit mark**  
Indicates beginning/end of placket/slit.

