

### 114 Dress

Burda sizes 34, 36, 38, 40, 42

Length of dress from waist 90 cm (35 1/2 ins)

### Materials

Viscose/rayon batiste,  
width: 140 cm (55 ins)  
length: 5.30 – 5.35 – 5.40 – 5.55 – 5.65 m  
(5 7/8 – 6 – 6 – 6 1/8 – 6 1/4 yds).

Lining,  
width: 140 cm (55 ins)  
length: 0.30 – 0.30 – 0.35 – 0.35 – 0.35 m  
(3/8 – 3/8 – 1/2 – 1/2 – 1/2 yd).

Interfacing.

1 invisible zip, 40 cm (16 ins) long.

Boning tape, 8 mm (a generous 1/4 in) wide and 0.40 m (1/2 yd) long.

Recommended fabrics: Lightweight, softly draping dress fabrics.

### Preparations

Print the pattern out on letter or A4 sized paper. It is **very important** to not scale the document. Your pattern will print on multiple pages, which you will then tile together. Arrange the sheets on a large, hard and flat surface matching up the numbers and letters (i.e. 6A to 6A). Cut or fold one of the sides and match the edge to its corresponding side. Then, tape down in place so paper is secure.

Trace the pattern pieces from the pattern sheet following the lines and markings for style 114 and your size.

On a large sheet of wrapping paper – the upper edge and the right edge must form a right angle – stretch a thread from the upper right corner to mark the radius (R) for the waist edge of skirt panel and the radius (R1) for the hem edge. Or measure the length of the skirt panel down from the waist edge at several points and then connect the points in an even curve to mark the hem edge.

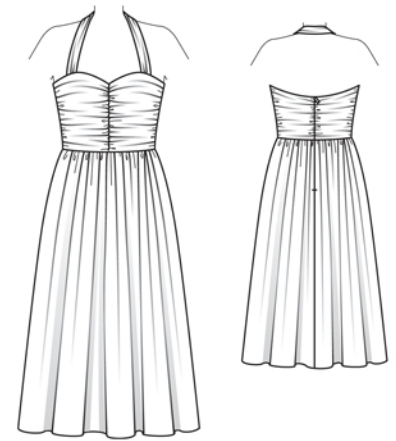
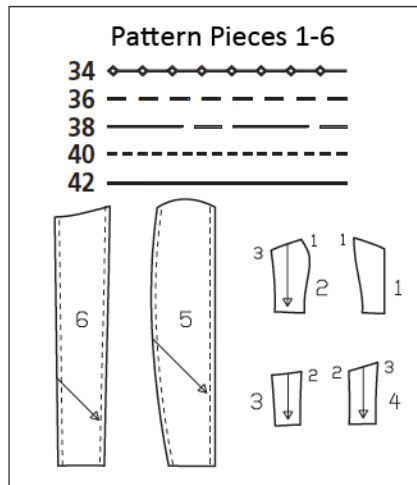
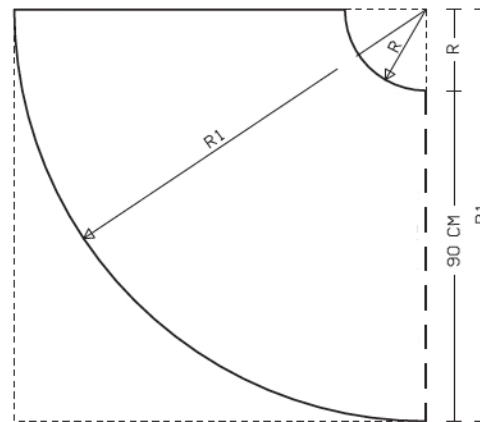


Diagram – skirt panel



Radius for waist edge (R)  
size 34: 21.3 cm  
size 36: 22.0 cm  
size 38: 22.6 cm  
size 40: 23.3 cm  
size 42: 23.9 cm

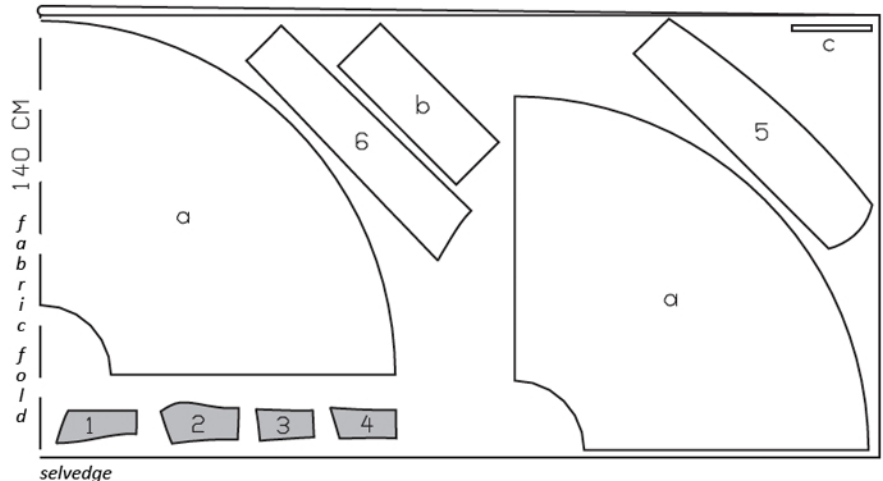
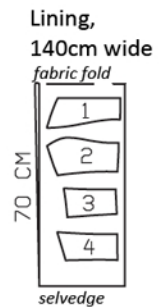
Radius for hem edge (R 1)  
size 34: 111.3 cm  
size 36: 112 cm  
size 38: 112.6 cm  
size 40: 113.3 cm  
size 42: 113.9 cm

**burda style magazine patterns do not have seam allowance included.**

Seam and hem allowance to be added:  
Seams, edges, and hem 1.5 cm (5/8 in).

Fold the fabric as shown in the pattern layout, right side facing in.

Batiste, 140cm wide  
selvedge



### Cutting Out

#### Batiste:

- 1 centre front 2x
- 2 side front 2x
- 3 centre back 2x
- 4 side back 2x
- 5 front draped piece 2x
- 6 back draped piece 2x

Draft the following pieces NOT included in the pattern:

- a) front skirt panel from diagram 1x, on a fold,
- a) back skirt panel from diagram 2x,
- b) 1 strap, cut on bias, 52 – 53 – 55 – 56 – 57 cm (20 1/2 – 21 – 21 3/4 – 22 1/4 – 22 1/2 ins) long, 19 cm (7 1/2 ins) wide, finished width 9.5 cm (3 3/4 ins),
- c) 2 facing strips for casings for boning, 23 cm (9 1/8 ins) long, 2 cm (3/4 in) wide (incl. allowances).

Lining: pieces 1 to 4.

Interfacing: See shaded area on pattern layout.

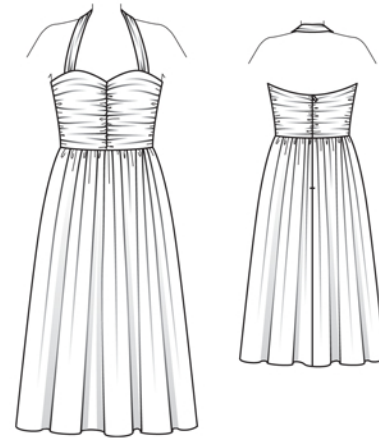
### Sewing

Stitch front and back section seams on bodice. Press seam allowances open. Gather lengthwise edges of draped pieces as given on pattern, at centre front gathering edges to 21 – 21.5 – 22 – 22.5 – 23 cm (8 3/8 – 8 1/2 – 8 3/4 – 9 – 9 1/8 ins). Distribute gathering evenly. Baste draped pieces to corresponding front and back pieces, with wrong side facing right side. The draped pieces should lie taut over each corresponding piece.

Stitch centre front seam of bodice, beginning at upper edge, exactly at marked neck edge. Stitch side seams of bodice. Press seam allowances open.

Lay facing strips for boning casings on inside, over seam allowances of side seams. Stitch to seam allowances, 5 mm (3/16 in) from seams.

Stitch side seams of skirt panels. Neaten seam allowances together and press onto back. Gather upper skirt panel edge to match edge of bodice. Stitch skirt to bodice. Press seam allowances up.



For the zip, measure and mark 20 cm (8 ins) down on back edges, beginning at skirt attachment seam. Sew invisible zip to back edges, down to marking, see “Helpful Hint” on next page. Stitch centre back seam from lower edge to zip. Press seam allowances open.

Cut boning tape to length of the stitched casings minus 5 mm (3/16 in) and insert into casings.

Fold strap piece lengthwise, right side facing in. Stitch lengthwise edges together. Turn strap right side out and press. Gather strap ends to a width of 4 cm (1 5/8 ins).

Stitch seams of bodice lining. Pin lining to upper bodice edge, right sides facing. At zip slit, turn lining back, approx. 5 mm (3/16 in) before slit edge, and pin to upper edge. Turn allowances of dress slit edges to outside and pin to upper bodice edge, over lining. Stitch along upper bodice edge, leaving 4 cm (1 5/8 ins) open next to each front section seam, for strap. Trim seam allowances. Turn lining to inside. Slip strap ends into openings in seam and pin in place, to try on dress. After fitting, turn lining up again. Stitch seam openings closed, catching strap ends. Turn lining to inside again. Turn lining edges under and sew to zip tapes and to attachment seam.

Finish hem edge with closely spaced zigzag stitching: Press allowance to wrong fabric side. Work from right side of fabric to stitch along fold edge with closely spaced zigzag stitching. On inside, trim allowance close to stitching.



These special zippers come in various lengths. The zipper should be at least 2 cm (3/4 in) longer than the slit. It is sewn in place before the seam below the slit is stitched. A special presser foot is required to sew the zipper in place.

### **Sewing the zipper in place:**

Open the zipper and push the coil back with your thumbnail to reveal the seam marking between the tape and the coil. Place the open zipper right side down on the right fabric side of one slit edge.

In order to stitch the zipper in place exactly along the marked seam line, you must first calculate the distance between the tape edge and the fabric edge as follows: width of seam allowance minus 1 cm (3/8 in) tape width = distance from edge of fabric. This will yield a value of 5 mm (3/16 in) if the width of the seam allowance is 1.5 cm (5/8 in).

Pin the top end of the zipper tape in place, the calculated distance from the edge of the fabric. The bottom end of the zipper will extend past the marked end of the slit. Place the presser foot on the zipper so that the coil is in the notch to the right of the needle (1). Stitch zipper in place, from the top to the marked end of the slit. Close zipper.

Place the other zipper tape face down on the opposite slit edge and pin in place at the top. Open zipper again. Place the presser foot on the top end of the zipper so that the coil is in the notch to the left of the needle (2). Sew the zipper in place, from the top to the end of the slit. Close zipper.

Now stitch the seam below the zipper, from bottom to top. Turn the loose lower end of the zipper out of the way, over the seam allowance. Stitch as close as possible to the last stitches of the zipper seams. Trim away excess zipper and bind the end with a scrap of fabric.

## Additional Information:

**Burda patterns do not include seam and hem allowances.** We recommend adding 1-2 cm (3/8 - 3/4 inch) for seams and 2-5 cm (3/4 - 2 inch/es) for hems. Refer to your specific pattern instructions for exact measurements.

The fabric requirements are based on the fabric used for the original designs. These amounts will change if you use fabric of a different width. The pattern of the fabric determines whether all the pieces must be cut in the same direction or whether some can be reversed to save fabric.

The cutting layout printed with the instructions shows the best way to place the pattern pieces on our original fabric. Fold the fabric double with the right side facing in. The fabric then has a fold edge and a selvedge edge. When cutting from a single fabric layer, the right side should face up.

Pattern pieces which are shown in the cutting layout with broken outlines should be pinned to the fabric with their printed side facing down.

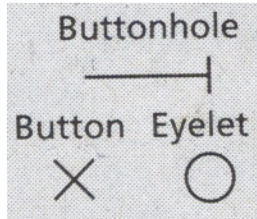
Grey shaded areas in the cutting layout indicate which pieces are to be interfaced.

Transfer the pattern piece lines to the wrong side of your fabric with burda dressmaker's carbon paper. Hand-baste along lines (e.g. for pockets or centre front) to make them visible on the right side of the fabric.

## Key Symbols:

### Seam numbers

show where pattern pieces must be sewn together. Match pieces with the same numbers.



### Seam marks

on long seams. Match the small symbols to one another.



**Presser foot** is the symbol for seam and top-stitching lines.



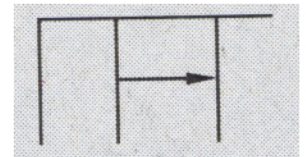
### Scissors

indicate edges to be cut without seam allowances and also slash lines, e.g. pocket openings.



### Pleat symbol

Fold pleat in direction of arrow.



### Placket/slit mark

Indicates beginning/end of placket/slit.



**Gather**  
**Ease**  
**Stretch**

