

113 Dress

Burda sizes 36, 38, 40, 42, 44

Length from waist 67 cm (26 1/2 ins)
(measured at centre back)

Materials

Batiste,
width: 135 cm (53 ins)
length: 2.45 – 2.45 – 2.50 – 2.50 – 2.55 m
(2 3/4 – 2 3/4 – 2 3/4 – 2 3/4 – 2 7/8 yds).

1 invisible zip, 40 cm (16 ins) long.

Elastic, 5 mm (3/16 in) wide and 0.60 – 0.65 – 0.65 – 0.70 – 0.70 m (3/4 – 7/8 – 7/8 – 7/8 – 7/8 yd) long.

Recommended fabrics: Lightweight dress fabrics.

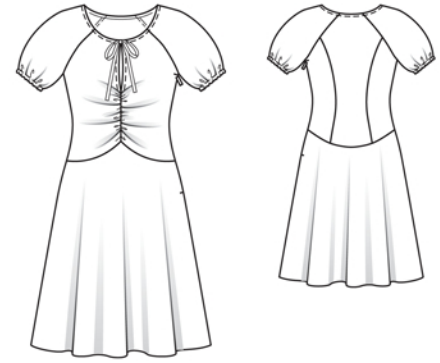
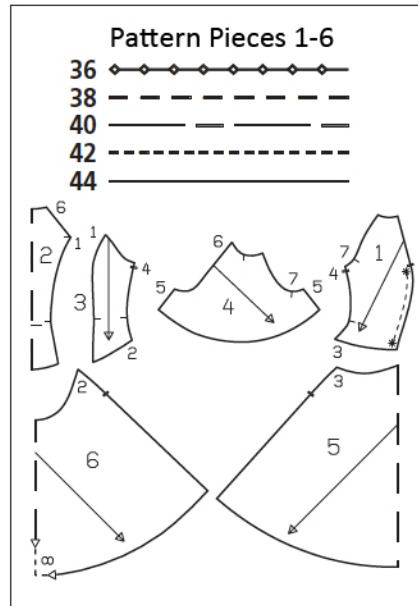
Preparations

Print the pattern out on letter or A4 sized paper. It is **very important** to not scale the document. Your pattern will print on multiple pages, which you will then tile together. Arrange the sheets on a large, hard and flat surface matching up the numbers and letters (i.e. 6A to 6A). Cut or fold one of the sides and match the edge to its corresponding side. Then, tape down in place so paper is secure.

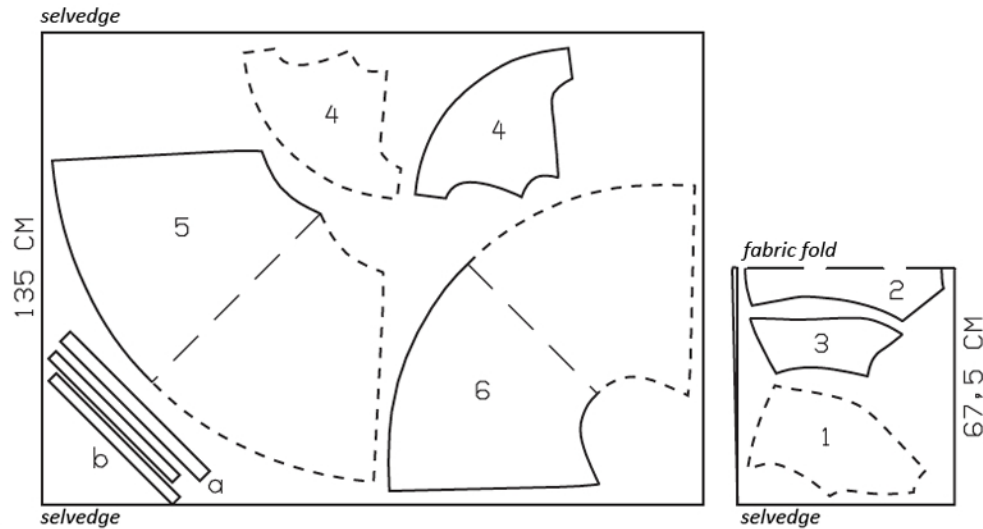
Trace the pattern pieces from the pattern sheet following the lines and markings for style 113 and your size.

burda style magazine patterns do not have seam allowance included.

Seam and hem allowance to be added:
Seams, edges, and hem 1.5 cm (5/8 in).



Right side faces in on a double layer of fabric. Right side faces up on a single layer of fabric. Cut right and left sleeves as opposites.



Cutting Out

- 1 front 2x
- 2 centre back, on a fold 1x
- 3 side back 2x
- 4 sleeve 2x
- 5 front skirt panel, on a fold 1x
- 6 back skirt panel, on a fold 1x

Draft the following pieces NOT included in the pattern:

a) bias strip for neck edge, 52 – 53 – 54 – 55 – 56 cm (20 1/2 – 21 – 21 1/4 – 21 3/4 – 22 1/4 ins) long, 4 cm (1 5/8 ins) wide (incl. allowances),

b) 2 tie bands, cut on bias, 50 cm (20 ins) long, 3 cm (1 1/4 ins) wide, finished width 1.5 cm (5/8 in).

Sewing

Gather fronts between asterisks to 15 – 15.5 – 16 – 16.5 – 17 cm (6 – 6 1/8 – 6 3/8 – 6 1/2 – 6 3/4 ins). From a scrap of fabric, cut a backing strip, 2 cm (3/4 in) wide. Lay strip under one gathered edge and pin. Stitch centre front seam below slit mark, ending stitching at seam line on lower edge. Press seam allowances open. Press allowances on slit edges to inside, turn in to a width of 7 mm (1/4 in), and stitch.

At top point of front skirt panel, fold allowance horizontally down and press. Stitch front skirt panel to front (seam number 3). Trim seam allowances to approx. 7 mm (1/4 in), neaten together, and press down.

Stitch back section seams. Press seam allowances toward centre. Stitch back skirt panel to back. Press seam allowances down.

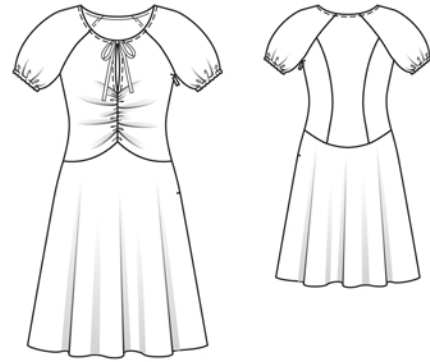
Sew invisible zip to left side edges, between slit marks, see the “Helpful Hint” on next page. Leave top ends of zip tapes loose. Teeth of zip should begin at slit mark.

Stitch left side seam above and below zip. Stitch right side seam.

Stitch sleeve seams. Press sleeve hem allowances to inside, turn in and stitch 7 mm (1/4 in) from edge, to form elastic casing. Leave a section of seam open, for elastic. Pull elastic into casing. Sew ends of elastic together to a circumference of 27 – 28 – 29 – 30 – 31 cm (10 3/4 – 11 1/8 – 11 1/2 – 12 – 12 1/4 ins). Sew opening closed.

Stitch sleeves to front and to back (seam numbers 6 and 7). Press allowances of sleeve attachment seams toward sleeves, up to start of underarm curve.

Neck edge and tie bands: Fold bias strip for neck edge lengthwise and press, right side facing out. Pin folded bias strip to neck edge so that fold edge of strip lies on garment piece, 1 cm (3/8 in) past seam line. Turn in ends of bias strip. Stitch along neck edge. Trim allowances to 7 mm (1/4 in). Turn in one end of each tie band. Fold tie



bands lengthwise, right side facing in. Stitch 7 mm (1/4 in) from fold edge. Turn tie bands right side out and press. Sew turned-in ends of tie bands closed. Stitch tie bands to seam allowances of neck edge on front slit edges. Turn bias strip to inside. Press edge. Topstitch 7 mm (1/4 in) from neck edge.

Finish hem edge with closely spaced zigzag stitching: Press allowance to wrong fabric side. Work from right side of fabric to stitch along fold edge with closely spaced zigzag stitching. On inside, trim allowance close to stitching.



These special zippers come in various lengths. The zipper should be at least 2 cm (3/4 in) longer than the slit. It is sewn in place before the seam below the slit is stitched. A special presser foot is required to sew the zipper in place.

Sewing the zipper in place:

Open the zipper and push the coil back with your thumbnail to reveal the seam marking between the tape and the coil. Place the open zipper right side down on the right fabric side of one slit edge.

In order to stitch the zipper in place exactly along the marked seam line, you must first calculate the distance between the tape edge and the fabric edge as follows: width of seam allowance minus 1 cm (3/8 in) tape width = distance from edge of fabric. This will yield a value of 5 mm (3/16 in) if the width of the seam allowance is 1.5 cm (5/8 in).

Pin the top end of the zipper tape in place, the calculated distance from the edge of the fabric. The bottom end of the zipper will extend past the marked end of the slit. Place the presser foot on the zipper so that the coil is in the notch to the right of the needle (1). Stitch zipper in place, from the top to the marked end of the slit. Close zipper.

Place the other zipper tape face down on the opposite slit edge and pin in place at the top. Open zipper again. Place the presser foot on the top end of the zipper so that the coil is in the notch to the left of the needle (2). Sew the zipper in place, from the top to the end of the slit. Close zipper.

Now stitch the seam below the zipper, from bottom to top. Turn the loose lower end of the zipper out of the way, over the seam allowance. Stitch as close as possible to the last stitches of the zipper seams. Trim away excess zipper and bind the end with a scrap of fabric.

Additional Information:

Burda patterns do not include seam and hem allowances. We recommend adding 1-2 cm (3/8 - 3/4 inch) for seams and 2-5 cm (3/4 - 2 inch/es) for hems. Refer to your specific pattern instructions for exact measurements.

The fabric requirements are based on the fabric used for the original designs. These amounts will change if you use fabric of a different width. The pattern of the fabric determines whether all the pieces must be cut in the same direction or whether some can be reversed to save fabric.

The cutting layout printed with the instructions shows the best way to place the pattern pieces on our original fabric. Fold the fabric double with the right side facing in. The fabric then has a fold edge and a selvedge edge. When cutting from a single fabric layer, the right side should face up.

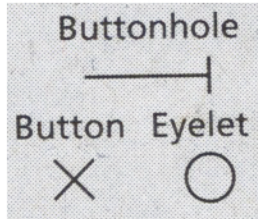
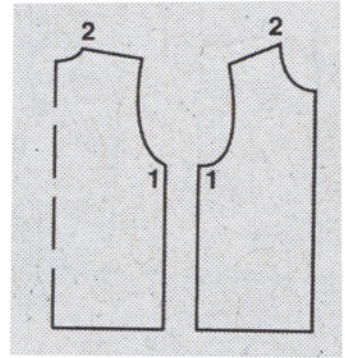
Pattern pieces which are shown in the cutting layout with broken outlines should be pinned to the fabric with their printed side facing down.

Grey shaded areas in the cutting layout indicate which pieces are to be interfaced.

Transfer the pattern piece lines to the wrong side of your fabric with burda dressmaker's carbon paper. Hand-baste along lines (e.g. for pockets or centre front) to make them visible on the right side of the fabric.

Key Symbols:

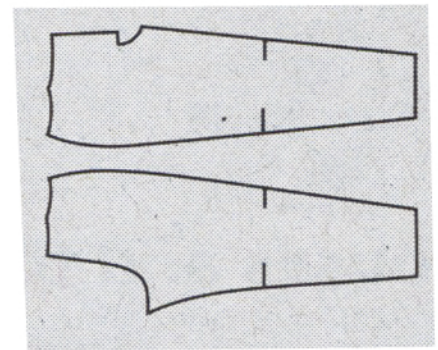
Seam numbers
show where pattern pieces must be sewn together. Match pieces with the same numbers.



Seam marks
on long seams. Match the small symbols to one another.



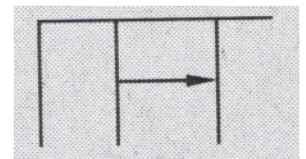
Presser foot
is the symbol for seam and top-stitching lines.



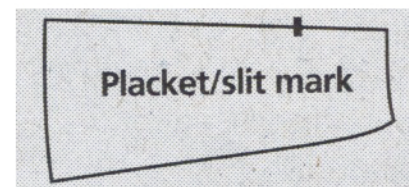
Scissors
indicate edges to be cut without seam allowances and also slash lines, e.g. pocket openings.



Pleat symbol
Fold pleat in direction of arrow.



Placket/slit mark
Indicates beginning/end of placket/slit.



Gather
Ease
Stretch

