

107B Top

Burda sizes **34, 36, 38, 40, 42**

Back length approx. 55 cm (22 ins)

Materials

knit tulle lace,

width: 135 cm (53 ins)

length: 1.30 – 1.30 – 1.30 – 1.35 – 1.35 m

(1 1/2 – 1 1/2 – 1 1/2 – 1 5/8 – 1 5/8 yds).

Interfacing.

5 small buttons.

Recommended fabrics: Fine jersey fabrics, knit tulle.

Preparations

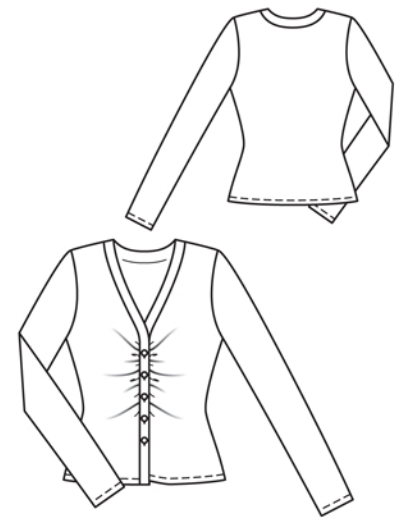
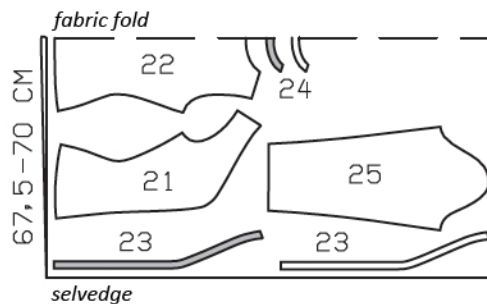
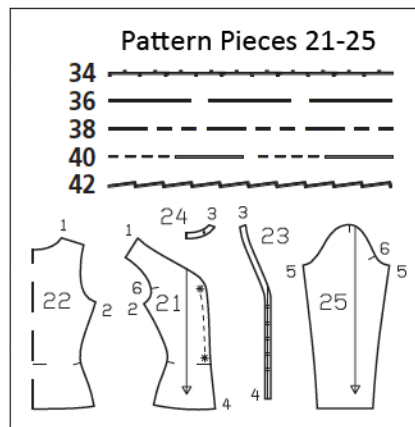
Print the pattern out on letter or A4 sized paper. It is **very** important to not scale the document. Your pattern will print on multiple pages, which you will then tile together. Arrange the sheets on a large, hard and flat surface matching up the numbers and letters (i.e. 6A to 6A). Cut or fold one of the sides and match the edge to its corresponding side. Then, tape down in place so paper is secure.

Trace the pattern pieces from the pattern sheet following the lines and markings for style 107B and your size. The buttonholes on piece 23 are marked for size 34. For sizes 36 – 42, mark the top buttonhole the same distance from neck edge as for size 34. The bottom buttonhole is the same for all sizes. Space the other buttonholes evenly in between.

burda style magazine patterns do not have seam allowance included.

Seam and hem allowance to be added:

Seams and edges 1.5 cm (5/8 in), hem and sleeve hems 2.5 cm (1 in).



Cut from a double layer of fabric, right side facing in.

Cutting Out

- 21 front 2x
- 22 back, on a fold 1x
- 23 front band 4x
- 24 back band, on a fold 2x
- 25 sleeve 2x

Interfacing: See shaded area on pattern layout. Interface outer band pieces.

Sewing

Note: Stitch seams on stretch fabrics with a special stretch stitch or at a narrow zigzag setting.

Stitch shoulder seams and side seams. Neaten seam allowances together and press onto back. Turn hem allowance to inside, turn in, and stitch 1.5 cm (5/8 in) from edge.

Gather front edges between asterisks to 14.5 – 15 – 15.5 – 16 – 16.5 cm (5 3/4 – 6 – 6 1/4 – 6 3/8 – 6 1/2 ins). Stitch shoulder seams of bands (outer and inner pieces). Stitch outer band to garment. Trim seam allowances to 7 mm (1/4 in). Press seam allowances onto band. Press allowance on inside edge of inner band to wrong fabric side. Lay inner band on attached band, right sides together, and stitch along front edges and neck edge. Stitch across bottom ends of band. Trim seam allowances. Turn band right side out. Baste inside edge in place. Topstitch band close to all edges.

Stitch sleeve seams. Turn sleeve hem allowances to wrong side, turn raw edges under, and stitch.

Set in sleeves. Work buttonholes in right front band.

Additional Information:

Burda patterns do not include seam and hem allowances. We recommend adding 1-2 cm (3/8 - 3/4 inch) for seams and 2-5 cm (3/4 - 2 inch/es) for hems. Refer to your specific pattern instructions for exact measurements.

The fabric requirements are based on the fabric used for the original designs. These amounts will change if you use fabric of a different width. The pattern of the fabric determines whether all the pieces must be cut in the same direction or whether some can be reversed to save fabric.

The cutting layout printed with the instructions shows the best way to place the pattern pieces on our original fabric. Fold the fabric double with the right side facing in. The fabric then has a fold edge and a selvedge edge. When cutting from a single fabric layer, the right side should face up.

Pattern pieces which are shown in the cutting layout with broken outlines should be pinned to the fabric with their printed side facing down.

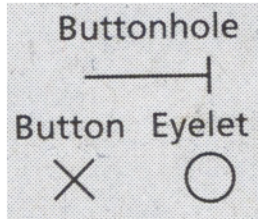
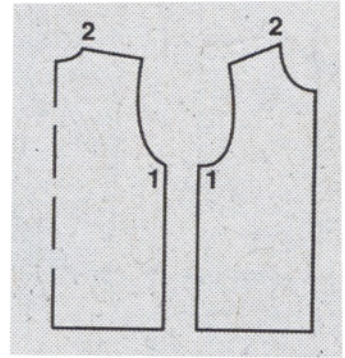
Grey shaded areas in the cutting layout indicate which pieces are to be interfaced.

Transfer the pattern piece lines to the wrong side of your fabric with burda dressmaker's carbon paper. Hand-baste along lines (e.g. for pockets or centre front) to make them visible on the right side of the fabric.

Key Symbols:

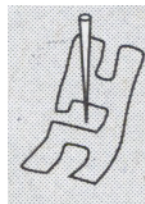
Seam numbers

show where pattern pieces must be sewn together. Match pieces with the same numbers.

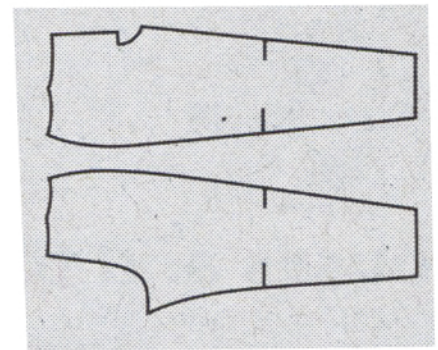


Seam marks

on long seams. Match the small symbols to one another.



Presser foot is the symbol for seam and top-stitching lines.



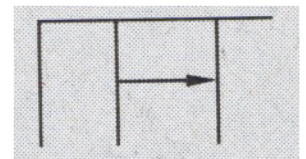
Scissors

indicate edges to be cut without seam allowances and also slash lines, e.g. pocket openings.



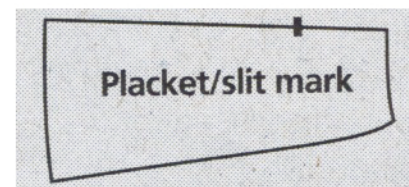
Pleat symbol

Fold pleat in direction of arrow.



Placket/slit mark

Indicates beginning/end of placket/slit.



Gather
Ease
Stretch

