

110 Dress

Burda sizes 34, 36, 38, 40, 42, 44

Length from waist 58 cm (23 ins)

Materials

Bouclé,
width: 150 cm (59 ins)
length: 1.40 – 1.40 – 1.40 – 1.45 – 1.45 – 1.45 m
(1 5/8 – 1 5/8 – 1 5/8 – 1 3/4 – 1 3/4 – 1 3/4 yds).

Interfacing.

Vilene Bias Tape/ stay tape.

Petersham ribbon, 1.5 cm (5/8 in) wide and 3.70 – 3.80 – 3.90 – 4.00 – 4.10 – 4.20 m (4 1/8 – 4 1/4 – 4 1/4 – 4 3/8 – 4 1/2 – 4 5/8 yds) long.

1 invisible zip, 60 cm (24 ins) long.

Recommended fabrics: Dress fabrics with some body.

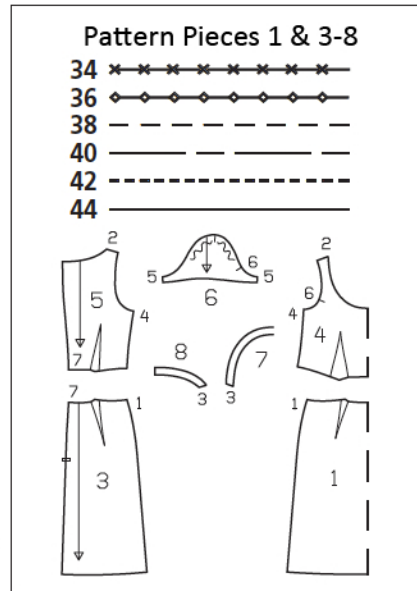
Preparations

Print the pattern out on letter or A4 sized paper. It is **very important** to not scale the document. Your pattern will print on multiple pages, which you will then tile together. Arrange the sheets on a large, hard and flat surface matching up the numbers and letters (i.e. 6A to 6A). Cut or fold one of the sides and match the edge to its corresponding side. Then, tape down in place so paper is secure.

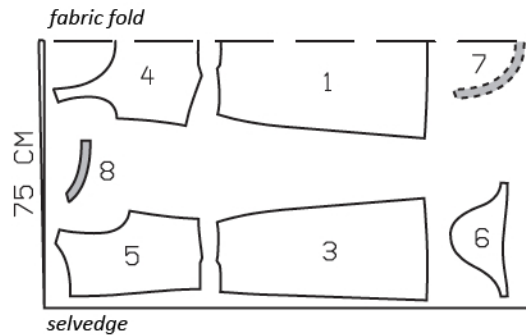
Trace the pattern pieces from the pattern sheet following the lines and markings for style 110 and your size.

burda style magazine patterns do not have seam allowance included.

Seam and hem allowance to be added:
Seams and edges 1.5 cm (5/8 in), hem 4 cm (1 5/8 ins), sleeve hems 1.5 cm (5/8 in).



Cut from a double layer of fabric, right side facing in.



Cutting Out

- 1 front skirt panel, on a fold 1x
- 3 back skirt panel 2x
- 4 front, on a fold 1x
- 5 back 2x
- 6 sleeve 2x
- 7 front neck facing, on a fold 1x
- 8 back neck facing 2x

Interfacing: See shaded area on pattern layout. Iron Vilene Bias Tape/ stay tape to wrong side of armhole edges and zip slit edges.

Sewing

Stitch front and back darts in bodice. Press darts toward centre. Pin petersham ribbon to front and back pieces, along dart seams, so that ribbon lies toward centre. Turn in top ends of ribbon at ends of darts. Edgestitch ribbon in place.

Stitch side seams and shoulder seams of bodice. Stitch facing seams. Press seam allowances open.

Press sleeve hem allowances to inside. Pin petersham ribbon to lower sleeve edges. Edgestitch ribbon in place. Stitch sleeve seams. Press seam allowances open. Sew seam allowances to lower sleeve edges by hand.

Set in sleeves, easing sleeve caps.

Stitch darts in skirt panels and press toward centre. Stitch petersham ribbon along dart seams as for bodice. Stitch side seams.

Stitch skirt to bodice. Press seam allowances open. Stitch petersham ribbon over horizontal seam so that it lies centred over seam.

Sewing

Stitch facing to neck edge, right sides together. Trim seam allowances and clip curves several times. Turn facing up.

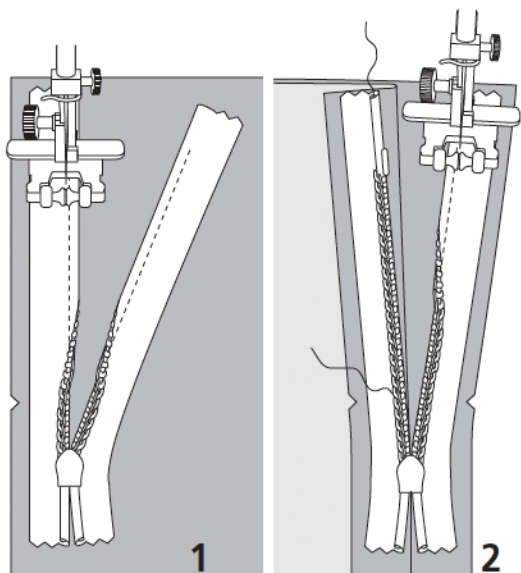
Lay petersham ribbon for neck edge on paper pattern (pieces 4 and 5 placed together at shoulder seam) and iron in shape, to match neck edge. Pin ribbon to neck edge along facing attachment seam. Beginning at back edges, stitch ribbon edges in place, approx. 4 cm (1 5/8 ins) long. Baste remainder of ribbon in place.

Sew invisible zip to back slit edges, see the "Helpful Hint" on next page. Fold upper ends of zip tapes down and sew in place. Stitch centre back seam from lower edge to zip.

Turn facing to inside and press edge. Sew facing to zip tapes. Stitch petersham ribbon in place.

Press hem allowance to inside and sew in place by hand.





These special zippers come in various lengths. The zipper should be at least 2 cm (3/4 in) longer than the slit. It is sewn in place before the seam below the slit is stitched. A special presser foot is required to sew the zipper in place.

Sewing the zipper in place:

Open the zipper and push the coil back with your thumbnail to reveal the seam marking between the tape and the coil. Place the open zipper right side down on the right fabric side of one slit edge.

In order to stitch the zipper in place exactly along the marked seam line, you must first calculate the distance between the tape edge and the fabric edge as follows: width of seam allowance minus 1 cm (3/8 in) tape width = distance from edge of fabric. This will yield a value of 5 mm (3/16 in) if the width of the seam allowance is 1.5 cm (5/8 in).

Pin the top end of the zipper tape in place, the calculated distance from the edge of the fabric. The bottom end of the zipper will extend past the marked end of the slit. Place the presser foot on the zipper so that the coil is in the notch to the right of the needle (1). Stitch zipper in place, from the top to the marked end of the slit. Close zipper.

Place the other zipper tape face down on the opposite slit edge and pin in place at the top. Open zipper again. Place the presser foot on the top end of the zipper so that the coil is in the notch to the left of the needle (2). Sew the zipper in place, from the top to the end of the slit. Close zipper.

Now stitch the seam below the zipper, from bottom to top. Turn the loose lower end of the zipper out of the way, over the seam allowance. Stitch as close as possible to the last stitches of the zipper seams. Trim away excess zipper and bind the end with a scrap of fabric.

Additional Information:

Burda patterns do not include seam and hem allowances. We recommend adding 1-2 cm (3/8 - 3/4 inch) for seams and 2-5 cm (3/4 - 2 inch/es) for hems. Refer to your specific pattern instructions for exact measurements.

The fabric requirements are based on the fabric used for the original designs. These amounts will change if you use fabric of a different width. The pattern of the fabric determines whether all the pieces must be cut in the same direction or whether some can be reversed to save fabric.

The cutting layout printed with the instructions shows the best way to place the pattern pieces on our original fabric. Fold the fabric double with the right side facing in. The fabric then has a fold edge and a selvedge edge. When cutting from a single fabric layer, the right side should face up.

Pattern pieces which are shown in the cutting layout with broken outlines should be pinned to the fabric with their printed side facing down.

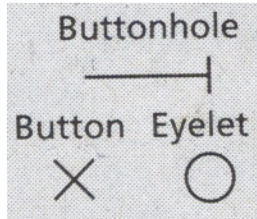
Grey shaded areas in the cutting layout indicate which pieces are to be interfaced.

Transfer the pattern piece lines to the wrong side of your fabric with burda dressmaker's carbon paper. Hand-baste along lines (e.g. for pockets or centre front) to make them visible on the right side of the fabric.

Key Symbols:

Seam numbers

show where pattern pieces must be sewn together. Match pieces with the same numbers.



Seam marks

on long seams. Match the small symbols to one another.



Presser foot is the symbol for seam and top-stitching lines.



Scissors

indicate edges to be cut without seam allowances and also slash lines, e.g. pocket openings.



Pleat symbol

Fold pleat in direction of arrow.



Placket/slit mark

Indicates beginning/end of placket/slit.



Gather
Ease
Stretch

