

145 Skirt

Burda sizes 44, 46, 48, 50, 52

Skirt length 62 cm (24 1/2 ins)

Upper skirt edge = waist

Materials

Ponte jersey with two-way stretch,
width: 135 cm (53 ins)
length: 1.50 m (1 3/4 yds) for all sizes.

Interfacing.

Leather band, 1 cm (3/8 in) wide and 1.40 m (1 5/8 yds) long.

1 metal zip, 20 cm (8 ins) long.

Recommended fabrics: Stretch skirt fabrics with some body. Use only very elastic fabrics.

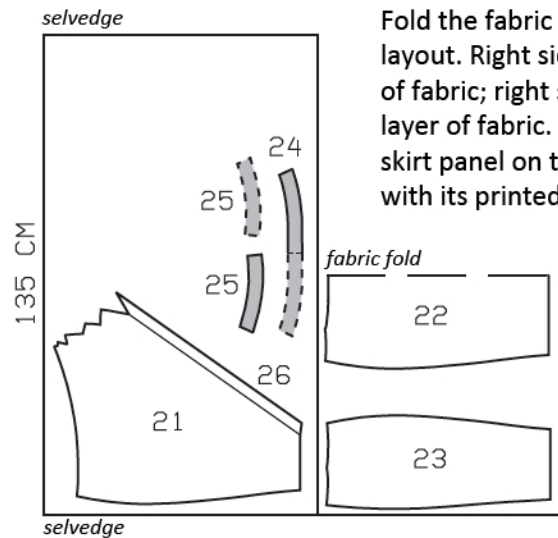
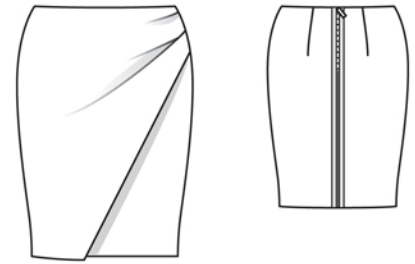
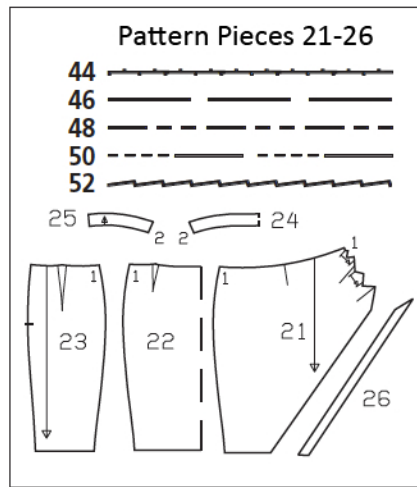
Preparations

Print the pattern out on letter or A4 sized paper. It is **very important** to not scale the document. Your pattern will print on multiple pages, which you will then tile together. Arrange the sheets on a large, hard and flat surface matching up the numbers and letters (i.e. 6A to 6A). Cut or fold one of the sides and match the edge to its corresponding side. Then, tape down in place so paper is secure.

Trace the pattern pieces from the pattern sheet following the lines and markings for style 145 and your size.

burda style magazine patterns do not have seam allowance included.

Seam and hem allowance to be added:
Seams and edges 1.5 cm (5/8 in), hem 4 cm (1 5/8 ins).



Fold the fabric as shown in the pattern layout. Right side faces in on a double layer of fabric; right side faces up on a single layer of fabric. Lay the asymmetric overskirt panel on the right side of the fabric with its printed side facing up.

Cutting Out

- 21 + 26 front overskirt panel
with facing 1x
- 22 front skirt panel, on a fold 1x
- 23 back skirt panel 2x
- 24 front facing, on a fold 1x
- 25 back facing 2x

Interfacing: See shaded area on pattern layout.

Sewing

Stitch front and back darts. Press darts toward centre. Stitch centre back seam, leaving slit open for zip. Press seam allowances open and press allowances on slit edges to inside.

Pin zip to slit edges, from outside of skirt, so that teeth of zip lie even with edges. Baste zip tapes in place. Cut leather band into 2 equal pieces. Stitch leather band over zip tapes and continue along each side of centre seam.

On front hem corner of overskirt, sew a mitred corner as follows: Turn self-facing and hem allowance to outside and stitch a diagonal seam. Trim allowances of mitring seam to 5 mm (3/16 in) wide and press open. Turn corner right side out. Press edges. Sew facing and hem allowance in place by hand.

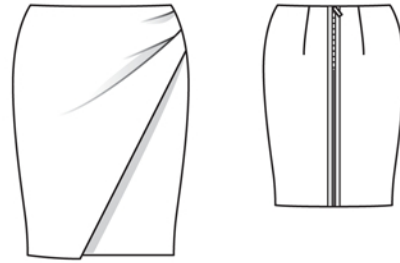
Fold pleats in overskirt panel in direction of arrows and baste. Over the lower pleat, fold another pleat so that fold edge meets placement line. Baste pleat in place.

Lay overskirt panel on front skirt panel, with wrong side facing right side, matching centre fronts. Baste together along upper and side edges. Hem allowance of front skirt panel extends.

Stitch side seams on skirt and on facing. Press seam allowances open.

Pin facing to upper skirt edge, right sides together, and stitch. Turn facing up and stitch to seam allowances, close to seam. Turn facing ends under. Turn facing to inside and sew to zip tapes. Sew lower facing edge to darts and seams.

Press hem allowance to inside and sew in place by hand.



Additional Information:

Burda patterns do not include seam and hem allowances. We recommend adding 1-2 cm (3/8 - 3/4 inch) for seams and 2-5 cm (3/4 - 2 inch/es) for hems. Refer to your specific pattern instructions for exact measurements.

The fabric requirements are based on the fabric used for the original designs. These amounts will change if you use fabric of a different width. The pattern of the fabric determines whether all the pieces must be cut in the same direction or whether some can be reversed to save fabric.

The cutting layout printed with the instructions shows the best way to place the pattern pieces on our original fabric. Fold the fabric double with the right side facing in. The fabric then has a fold edge and a selvedge edge. When cutting from a single fabric layer, the right side should face up.

Pattern pieces which are shown in the cutting layout with broken outlines should be pinned to the fabric with their printed side facing down.

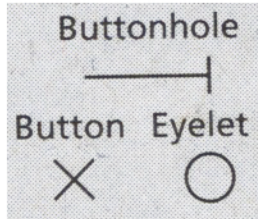
Grey shaded areas in the cutting layout indicate which pieces are to be interfaced.

Transfer the pattern piece lines to the wrong side of your fabric with burda dressmaker's carbon paper. Hand-baste along lines (e.g. for pockets or centre front) to make them visible on the right side of the fabric.

Key Symbols:

Seam numbers

show where pattern pieces must be sewn together. Match pieces with the same numbers.



Seam marks

on long seams. Match the small symbols to one another.



Presser foot is the symbol for seam and top-stitching lines.



Scissors

indicate edges to be cut without seam allowances and also slash lines, e.g. pocket openings.



Pleat symbol

Fold pleat in direction of arrow.



Placket/slit mark

Indicates beginning/ end of placket/slit.



Gather
Ease
Stretch

