

144 Dress

Burda sizes 44, 46, 48, 50, 52

Length from waist 110 cm (43 1/2 ins)

Materials

Crêpe,

width: 120 cm (47 ins)

length: 3.30 – 3.30 – 3.30 – 3.35 – 3.35 m
(3 3/4 yds).

Satin, as contrasting fabric,

width: 140 cm (55 ins)

length: 0.40 m (1/2 yd) for all sizes.

Interfacing.

About 45 sew-on “gems” in different shapes and sizes.

Recommended fabrics: Softly draping dress fabrics and satin as contrasting fabric.

Preparations

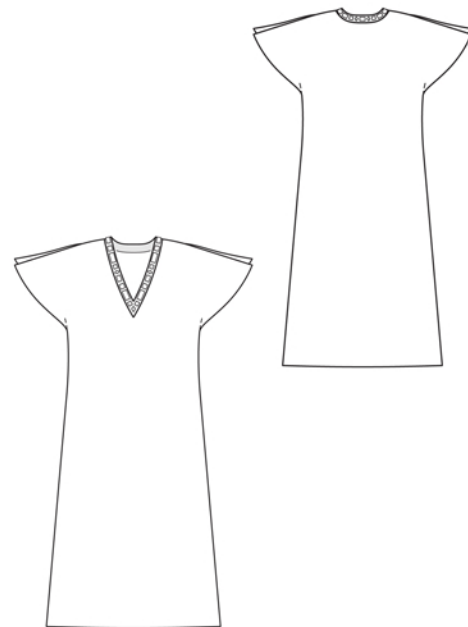
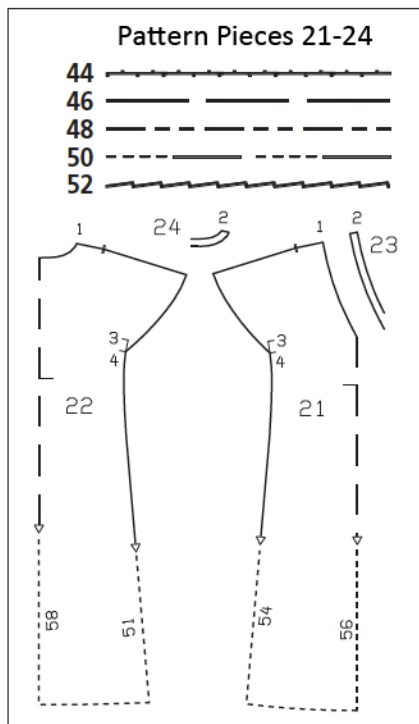
Print the pattern out on letter or A4 sized paper. It is **very important** to not scale the document. Your pattern will print on multiple pages, which you will then tile together. Arrange the sheets on a large, hard and flat surface matching up the numbers and letters (i.e. 6A to 6A). Cut or fold one of the sides and match the edge to its corresponding side. Then, tape down in place so paper is secure.

Trace the pattern pieces from the pattern sheet following the lines and markings for style 144 and your size.

burda style magazine patterns do not have seam allowance included.

Seam and hem allowance to be added:

Seams and edges 1.5 cm (5/8 in), hem 4 cm (1 5/8 ins).



Cutting Out

Crêpe:

21 front with integrated sleeve,
on a fold 1x

22 back with integrated sleeve,
on a fold 1x

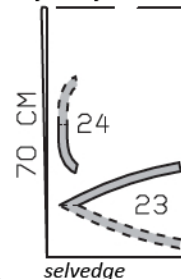
Satin:

23 front neck band, on a fold 2x

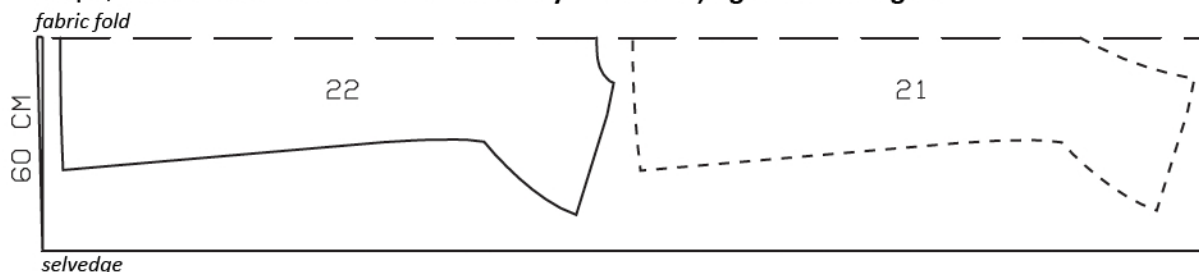
24 back neck band, on a fold 2x

Interfacing: See shaded area on pattern layout. Also iron a piece of interfacing to wrong side of front, over bottom point of neck edge

Satin, 140cm wide
fabric fold



Crepe, 120cm wide Cut from a double layer of fabric, right side facing in.



Sewing

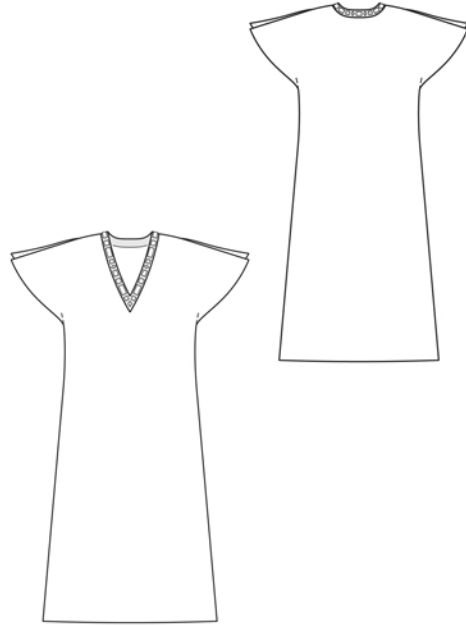
On front and back pieces, clip seam allowances at marking near seam number 4. Press allowances on hem edges and on upper slit edges of integrated sleeves to inside, pressing allowances on upper edges diagonally toward edge, from slit mark. Finish hem and slit edges of sleeves with closely spaced zigzag stitching: Press allowance to wrong fabric side. Work from right side of fabric to stitch along fold edge with closely spaced zigzag stitching. On inside, trim allowance close to stitching. Stitch shoulder seams, up to to slit mark. Press seams open.

Neck band: Stitch shoulder seams on neck bands. Stitch outer band to neck edge of garment, clipping seam allowance of front at centre front to do so. Press seam allowances onto band. Lay inside band on attached band, right sides facing. Stitch along neck edge. Trim seam allowances and clip at centre front. Turn inside band to inside. Turn edge of inside band under and baste to attachment seam. Work from right side to topstitch band close to attachment seam.

Stitch side seams below marking at seam number 4. Lay front on back, with wrong sides together and with side seams along the fold. Stitch above side seams as marked, stitching up to marking near seam number 3.

Press hem allowance to inside and sew in place by hand.

Sew "gems" to band.



Additional Information:

Burda patterns do not include seam and hem allowances. We recommend adding 1-2 cm (3/8 - 3/4 inch) for seams and 2-5 cm (3/4 - 2 inch/es) for hems. Refer to your specific pattern instructions for exact measurements.

The fabric requirements are based on the fabric used for the original designs. These amounts will change if you use fabric of a different width. The pattern of the fabric determines whether all the pieces must be cut in the same direction or whether some can be reversed to save fabric.

The cutting layout printed with the instructions shows the best way to place the pattern pieces on our original fabric. Fold the fabric double with the right side facing in. The fabric then has a fold edge and a selvedge edge. When cutting from a single fabric layer, the right side should face up.

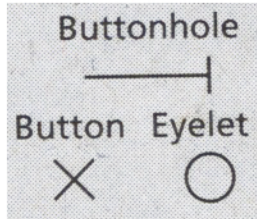
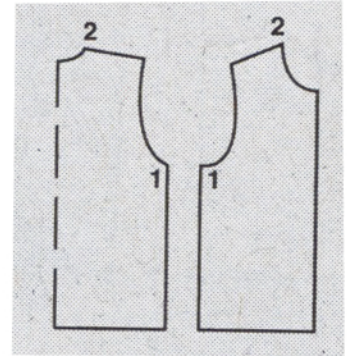
Pattern pieces which are shown in the cutting layout with broken outlines should be pinned to the fabric with their printed side facing down.

Grey shaded areas in the cutting layout indicate which pieces are to be interfaced.

Transfer the pattern piece lines to the wrong side of your fabric with burda dressmaker's carbon paper. Hand-baste along lines (e.g. for pockets or centre front) to make them visible on the right side of the fabric.

Key Symbols:

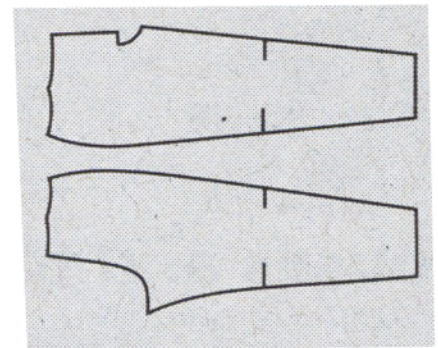
Seam numbers
show where pattern pieces must be sewn together. Match pieces with the same numbers.



Seam marks
on long seams. Match the small symbols to one another.



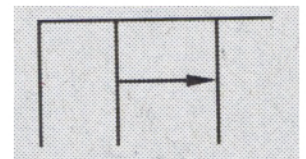
Presser foot
is the symbol for seam and top-stitching lines.



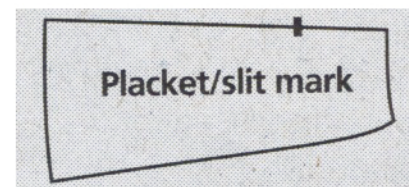
Scissors
indicate edges to be cut without seam allowances and also slash lines, e.g. pocket openings.



Pleat symbol
Fold pleat in direction of arrow.



Placket/slit mark
Indicates beginning/end of placket/slit.



Gather
Ease
Stretch

