

141 Blouse

Burda sizes 44, 46, 48, 50, 52

Back length approx. 87 cm (34 1/4 ins)

Materials

Note: Narrow black strips of fabric have been stitched along the darts and seams of the white blouse. These strips are cut from fabric. The edges of the strips are pressed under and then the strips are stitched to the blouse. Instead of making fabric strips, you can use purchased bands (e.g. soft petersham ribbon).

Crêpe satin with widthwise stretch, width: 135 cm (53 ins)
length: white, 1.75 – 1.75 – 1.80 – 1.85 – 2.00 m
(2 – 2 – 2 – 2 1/8 – 2 1/4 yds)
black, 0.30 m (3/8 yd) for all sizes.

Interfacing.

1 small fabric-covered button.

8 small flat buttons for the concealed fastening.

Recommended fabrics: Blouse fabrics, with or without elastane.

Preparations

Print the pattern out on letter or A4 sized paper. It is **very** important to not scale the document. Your pattern will print on multiple pages, which you will then tile together. Arrange the sheets on a large, hard and flat surface matching up the numbers and letters (i.e. 6A to 6A). Cut or fold one of the sides and match the edge to its corresponding side. Then, tape down in place so paper is secure.

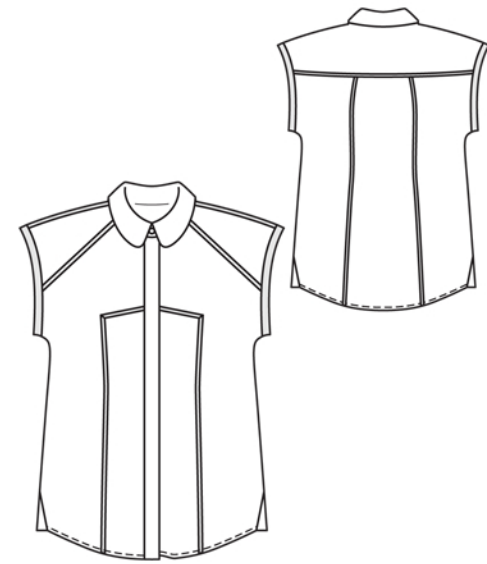
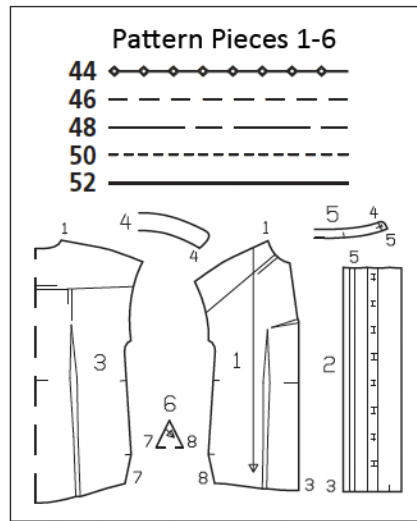
Trace the pattern pieces from the pattern sheet following the lines and markings for style 141 and your size. Note different lines for right and left fastening edges of front band but cut the right and left pieces the same size initially.

burda style magazine patterns do not have seam allowance included.

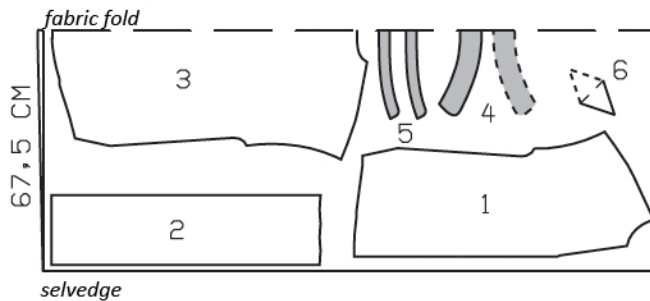
Seam and hem allowance to be added:

Seams, edges, and hem 1.5 cm (5/8 in), band attachment edges (on front and front band) 4 cm (1 5/8 ins), no allowance on long facing edge of front band.

Copyright 2012 by Verlag GmbH & Co. KG Aenne Burda, Hubert Burda-Platz 2, D-77652 Offenburg. All models, pattern pieces and drawings are copyrighted, commercial use is prohibited. The publisher shall not be liable for damages caused by improper handling of the cut material, improper execution of the tips and instructions, or improper use of the models are emerging.

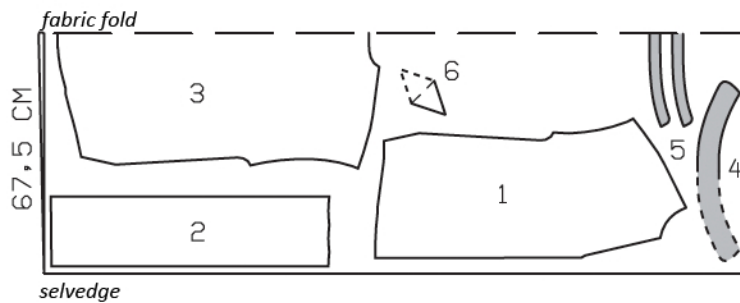


White
Sizes 44-50



Cut the white fabric from a double layer, right side facing in. Cut the black fabric from a single layer.

Size 52



Black
Sizes 44-52



Cutting Out

White fabric:

- 1 front 2x
- 2 front band 2x
- 3 back, on a fold 1x
- 4 collar, on a fold 2x
- 5 collar stand, on a fold 2x
- 6 side gusset, on a fold 2x

Black fabric:

- a) 2 armhole bands, 47 – 48 – 50 – 52 – 54 cm (18 1/2 – 19 – 19 3/4 – 20 1/2 – 21 1/4 ins) long, 3 cm (1 1/4 ins) wide, finished width 1.5 cm (5/8 in).

Cutting Out Continued...

Narrow strips of fabric, 2 cm (3/4 in) wide (incl. allowances):

b) for front darts, 2 pieces, each 69 – 69 – 70 – 70 – 71 cm (27 1/4 – 27 1/4 – 27 3/4 – 27 3/4 – 28 ins) long,

c) for front, 2 pieces, each 35 cm (13 3/4 ins) long,

d) for back darts, 2 pieces, each 73 cm (28 3/4 ins) long,

e) for back, 1 piece, 70 – 70 – 72 – 73 – 75 cm (27 3/4 – 27 3/4 – 28 1/2 – 28 3/4 – 29 3/4 ins) long,

f) for shoulder seams, 2 pieces, each 33 cm (13 ins) long.

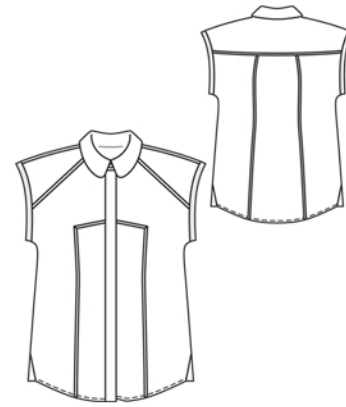
Interfacing: See shaded area on pattern layout. Iron interfacing to wrong side of bands and narrow strips of fabric. This will be easier if you iron the interfacing to the fabric before cutting out these pieces.

Sewing

Stitch vertical darts and bust darts in fronts. Trim dart allowances to 7 mm (1/4 in) and neaten. Press bust darts up. Press vertical darts forward. Stitch darts in back. Trim dart allowances to 7 mm (1/4 in), neaten, and press toward centre.

Press long edges of narrow fabric strips to wrong side, 5 mm (3/16 in) wide. Pin strips for front darts to fronts along front edge of vertical darts, from lower edge to 1 cm (3/8 in) above dart end. Make a diagonal fold in each strip, 1 cm (3/8 in) above dart, and pin strip above bust dart, up to front edge. Edgestitch strips in place. Pin strips for back darts to back, with strips lying toward centre. At the top, trim away strips 5 mm (3/16 in) above horizontal line. Edgestitch strips in place. Stitch strips for fronts and back in place as marked.

Stitch shoulder seams. Trim seam allowances, neaten together, and press forward. Stitch strips to fronts, along shoulder seams.



Fold side gusset pieces on fabric fold line and press. Baste edges together. Stitch side gussets to back, from seam number 7 to marking –hem allowance extends. Trim seam allowances, neaten together, and press onto back. Stitch side seams from upper edges to markings. Stitch gussets to fronts below markings (seam number 8). Trim seam allowances, neaten together, and press onto fronts. Press hem allowance to inside, turn edge under by half width, and stitch.

Stitch narrow ends of each armhole band together. Stitch bands to armhole edges, matching seam of armhole band to side seam. Trim seam allowances to approx. 7 mm (1/4 in) wide and press onto bands. Fold bands half to inside, turn edges under, and baste to attachment seams. Topstitch armhole bands close to attachment seams.

Stitch right front band to right front, stitching 4 cm (1 5/8 ins) from edge. Press seam allowances onto band. For the buttonhole band, fold the band on front fold line (right fold), with right side facing in. Stitch lower edges together, from fold edge to marking. Clip seam allowances at seam end and trim allowances along seam. Turn buttonhole band right side out. Work buttonholes as marked. Turn facing to outside of band on facing fold line and pin. Stitch across bottom end of band. Turn band right side out – buttonhole band lies on wrong side of front. Work from right side to stitch along line of band attachment seam. Press buttonhole band forward and sew to bottom edge by hand. Also topstitch band close to attachment seam.

Stitch left front band to left front, stitching 4 cm (1 5/8 ins) from edge. Press seam allowances onto band. Trim self-facing to marked “left edge” line. Press self-facing to inside on marked “left edge” line. Then turn folded facing to outside and stitch across bottom end of band. Turn facing to inside. Baste inside edge in place. Topstitch band close to attachment seam.

Collar with collar stand: Stitch collar pieces right sides together along outer edges. Trim seam allowances. Turn collar right side out and press. Lay collar stand pieces right sides together, with collar in between. Stitch along front and upper collar stand edges, beginning and ending in front, exactly at seam line on attachment edge. Trim seam allowances. Turn collar stand right side out. Stitch outer collar stand piece to neck edge. Press seam allowances onto collar stand. Turn in inside collar stand and baste to attachment seam. Topstitch collar stand close to all edges. Work a buttonhole in right end of collar stand.

Additional Information:

Burda patterns do not include seam and hem allowances. We recommend adding 1-2 cm (3/8 - 3/4 inch) for seams and 2-5 cm (3/4 - 2 inch/es) for hems. Refer to your specific pattern instructions for exact measurements.

The fabric requirements are based on the fabric used for the original designs. These amounts will change if you use fabric of a different width. The pattern of the fabric determines whether all the pieces must be cut in the same direction or whether some can be reversed to save fabric.

The cutting layout printed with the instructions shows the best way to place the pattern pieces on our original fabric. Fold the fabric double with the right side facing in. The fabric then has a fold edge and a selvedge edge. When cutting from a single fabric layer, the right side should face up.

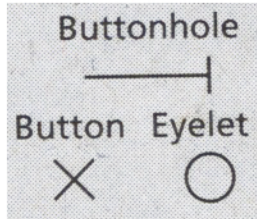
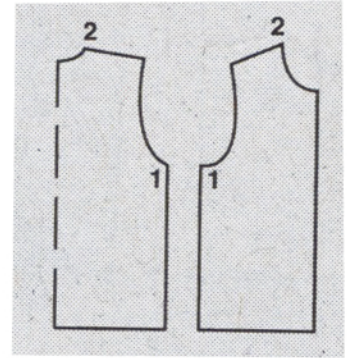
Pattern pieces which are shown in the cutting layout with broken outlines should be pinned to the fabric with their printed side facing down.

Grey shaded areas in the cutting layout indicate which pieces are to be interfaced.

Transfer the pattern piece lines to the wrong side of your fabric with burda dressmaker's carbon paper. Hand-baste along lines (e.g. for pockets or centre front) to make them visible on the right side of the fabric.

Key Symbols:

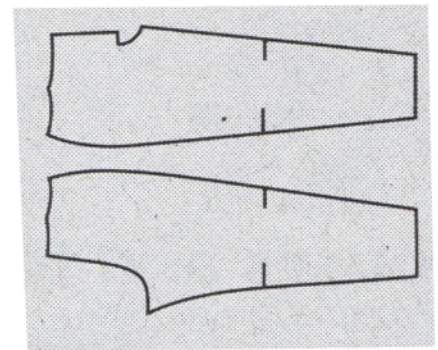
Seam numbers
show where pattern pieces must be sewn together. Match pieces with the same numbers.



Seam marks
on long seams. Match the small symbols to one another.



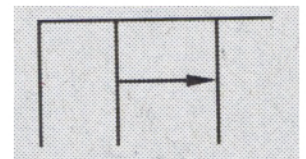
Presser foot
is the symbol for seam and top-stitching lines.



Scissors
indicate edges to be cut without seam allowances and also slash lines, e.g. pocket openings.



Pleat symbol
Fold pleat in direction of arrow.



Placket/slit mark
Indicates beginning/ end of placket/slit.

