

143 Tunic

Burda sizes 44, 46, 48, 50, 52

Back length approx. 95 cm (37 1/2 ins)

Materials

Crêpe satin, with widthwise stretch,
width: 140 cm (55 ins)
length: white, 2.10 m (2 3/8 yds)
black of 0.40 m (1/2 yd).

Interfacing.

Elastic, 1 cm (3/8 in) wide and 0.90 – 1.00 – 1.00 – 1.10 – 1.10 m (1 – 1 1/8 – 1 1/8 – 1 1/4 – 1 1/4 yds) long.

Recommended fabrics: Lightweight, softly draping fabrics, with or without elastane.

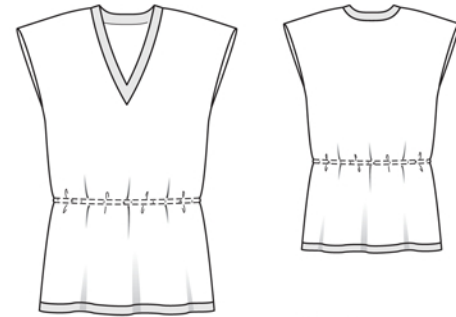
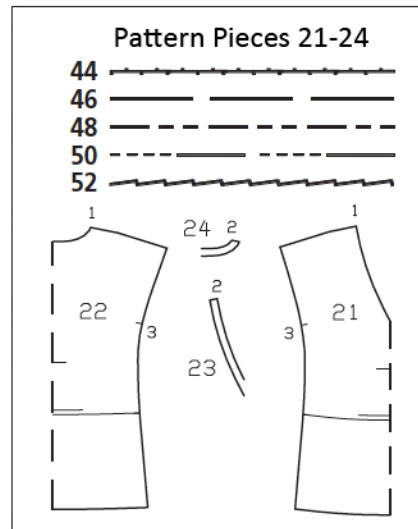
Preparations

Print the pattern out on letter or A4 sized paper. It is **very important** to not scale the document. Your pattern will print on multiple pages, which you will then tile together. Arrange the sheets on a large, hard and flat surface matching up the numbers and letters (i.e. 6A to 6A). Cut or fold one of the sides and match the edge to its corresponding side. Then, tape down in place so paper is secure.

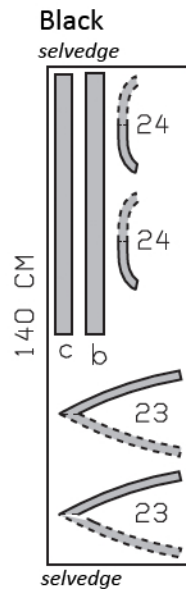
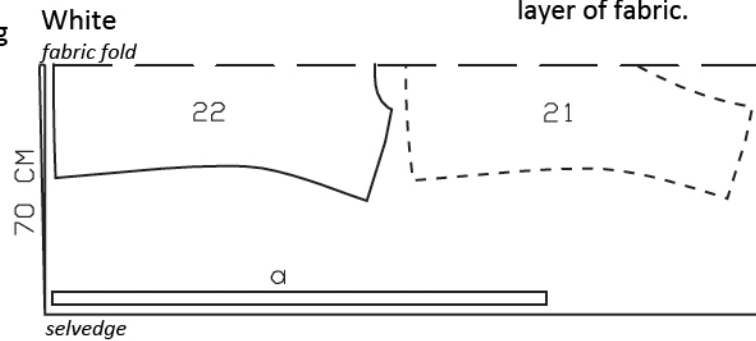
Trace the pattern pieces from the pattern sheet following the lines and markings for style 143 and your size.

burda style magazine patterns do not have seam allowance included.

Seam and hem allowance to be added:
Seams and edges 1.5 cm (5/8 in).



Right side faces in on a double layer of fabric; right side faces up on a single layer of fabric.



Cutting Out

White fabric:

21 front, on a fold 1x

22 back, on a fold 1x

Draft the following pieces NOT included in the pattern:

a) facing strip for elastic casing, 117 – 121 – 127 – 133 – 139 cm (46 – 47 3/4 – 50 – 52 1/2 – 54 3/4 ins) long, 3 cm (1 1/4 ins) wide (incl. allowances).

Black fabric:

23 front neck band, on a fold 2x

24 back neck band, on a fold 2x

b) front hem band, 62.5 – 64.5 – 67.5 – 70.5 – 73.5 cm (24 5/8 – 25 1/2 – 26 5/8 – 27 7/8 – 29 ins) long, 5 cm (2 ins) wide, finished width 2.5 cm (1 in),

c) back hem band, 62 – 64 – 67 – 70 – 73 cm (24 3/4 – 25 1/4 – 26 1/2 – 27 3/4 – 28 3/4 ins) long, 5 cm (2 ins) wide, finished width 2.5 cm (1 in).

Interfacing: See shaded area on pattern layout. Also iron a piece of interfacing to wrong side of front, over bottom point of neck edge.

Sewing

Stitch shoulder seams (seam number 1). Trim seam allowances to 7 mm (1/4 in) wide, neaten together, and press onto back.

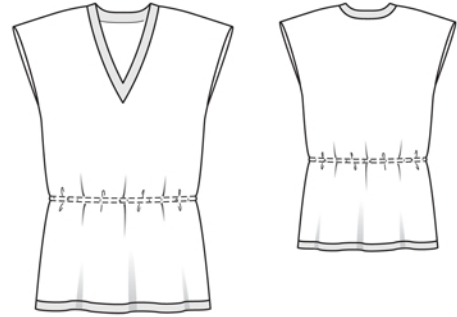
Neck band: Stitch shoulder seams on neck bands. Stitch outer band to neck edge of garment, clipping seam allowance of front at centre front to do so. Press seam allowances onto band. Lay inside band on attached band, right sides facing. Stitch along neck edge. Trim seam allowances and clip at centre front. Turn inside band to inside. Turn edge of inside band under and baste to attachment seam. Work from right side to topstitch band close to attachment seam.

Press allowances on armhole edges to inside, tapering toward seam allowance edge at markings. Finish hem edge with closely spaced zigzag stitching: Press allowance to wrong fabric side. Work from right side of fabric to stitch along fold edge with closely spaced zigzag stitching. On inside, trim allowance close to stitching.

Stitch side seams below marking at seam number 3. Trim seam allowances, neaten together, and press onto back.

Stitch side seams of hem band. Stitch band to lower front and back edges. Press seam allowances onto band. Fold band in half to inside and press. Turn in inside edge of band and baste in place. Stitch from right side, close to attachment seam.

Neaten long edges of facing strip for casing. Pin facing to inner side of front and back, over marked casing lines, beginning and ending at one side seam. Turn in ends of strip. Working from right side of garment, stitch facing strip in place as marked. Pull elastic into casing. Sew ends of elastic together to a circumference of 86 – 90 – 96 – 102 – 108 cm (34 – 35 1/2 – 37 3/4 – 40 1/4 – 42 1/2 ins).



Additional Information:

Burda patterns do not include seam and hem allowances. We recommend adding 1-2 cm (3/8 - 3/4 inch) for seams and 2-5 cm (3/4 - 2 inch/es) for hems. Refer to your specific pattern instructions for exact measurements.

The fabric requirements are based on the fabric used for the original designs. These amounts will change if you use fabric of a different width. The pattern of the fabric determines whether all the pieces must be cut in the same direction or whether some can be reversed to save fabric.

The cutting layout printed with the instructions shows the best way to place the pattern pieces on our original fabric. Fold the fabric double with the right side facing in. The fabric then has a fold edge and a selvedge edge. When cutting from a single fabric layer, the right side should face up.

Pattern pieces which are shown in the cutting layout with broken outlines should be pinned to the fabric with their printed side facing down.

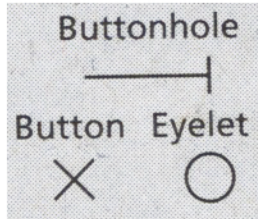
Grey shaded areas in the cutting layout indicate which pieces are to be interfaced.

Transfer the pattern piece lines to the wrong side of your fabric with burda dressmaker's carbon paper. Hand-baste along lines (e.g. for pockets or centre front) to make them visible on the right side of the fabric.

Key Symbols:

Seam numbers

show where pattern pieces must be sewn together. Match pieces with the same numbers.



Seam marks

on long seams. Match the small symbols to one another.



Presser foot is the symbol for seam and top-stitching lines.



Scissors

indicate edges to be cut without seam allowances and also slash lines, e. g. pocket openings.



Pleat symbol

Fold pleat in direction of arrow.



Placket/slit mark

Indicates beginning/ end of placket/slit.



Gather
Ease
Stretch

