

138 Blazer

Burda sizes 44, 46, 48, 50, 52

Back length approx. 52 cm (20 1/2 ins)

Materials

Crêpe,
width: 120 cm (47 ins)
length: 1.75 – 1.80 – 1.80 – 1.85 – 1.85 m
(2 – 2 – 2 – 2 1/8 – 2 1/8 yds).

Duchesse, as contrasting fabric
width: 135 cm (53 ins)
length: 0.70 – 0.70 – 0.70 – 0.75 – 0.75 m (7/8 yd).

Interfacing.

Lining,
width: 140 cm (55 ins)
length: 1.35 – 1.35 – 1.35 – 1.40 – 1.40 m (1 5/8 yds),

2 buttons and 1 flat inside button.

Shoulder pads.

A small piece of batting.

Recommended fabrics: Lightweight jacket fabrics and duchesse as contrasting fabric.

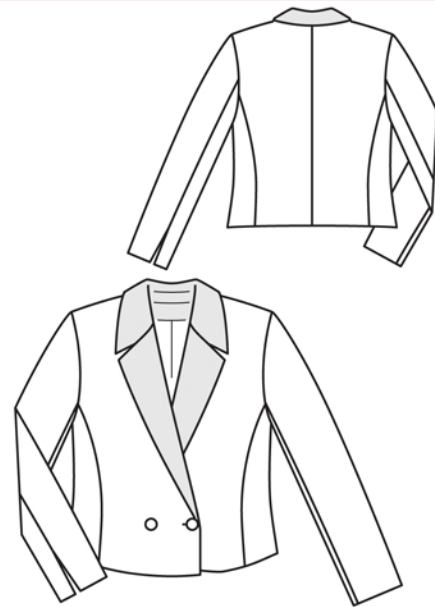
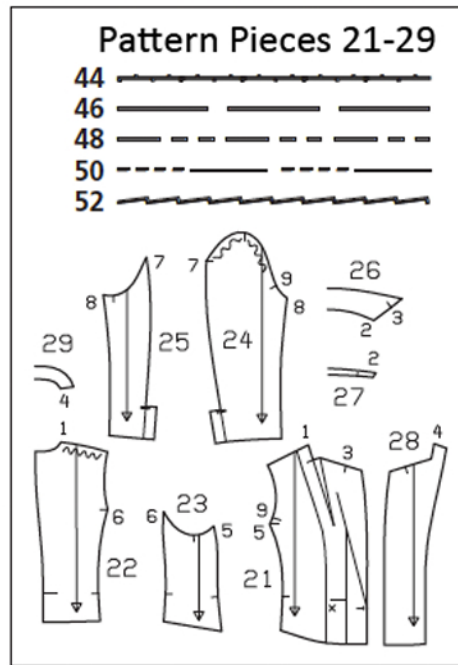
Preparations

Print the pattern out on letter or A4 sized paper. It is **very important** to not scale the document. Your pattern will print on multiple pages, which you will then tile together. Arrange the sheets on a large, hard and flat surface matching up the numbers and letters (i.e. 6A to 6A). Cut or fold one of the sides and match the edge to it's corresponding side. Then, tape down in place so paper is secure.

Trace the pattern pieces from the pattern sheet following the lines and markings for style 138 and your size.

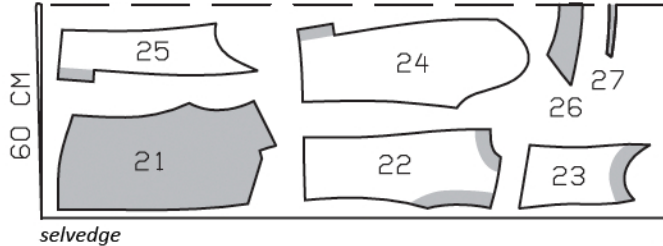
burda style magazine patterns do not have seam allowance included.

Seam and hem allowance to be added:
Seams and edges 1.5 cm (5/8 in), hem and sleeve hems 4 cm (1 5/8 ins), lining 1.5 cm (5/8 in).



Crêpe, 120cm wide

fabric fold



Cut from a double layer of fabric, right side facing in.

Cutting Out

Crêpe:

- 21 front 2x
- 22 back 2x
- 23 side piece 2x
- 24 upper sleeve 2x
- 25 under sleeve 2x
- 26 under collar, on a fold 1x
- 27 collar stand (under collar), on a fold 1x

Duchesse:

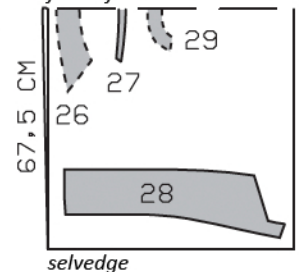
- 26 top collar, on a fold 1x
- 27 collar stand (top collar), on a fold 1x
- 28 front facing 2x
- 29 back facing, on a fold 1x

Lining: piece 21 to lining line; piece 22 minus width of facing and with an ease pleat of approx. 2 cm (3/4 in) at centre back; pieces 24 and 25 without vent facings; piece 23.

Interfacing: See shaded area on pattern layout. Also interface hem allowances.

Duchesse, 135cm wide

fabric fold



Sewing

Stitch centre back seam, front and back section seams, and shoulder seams. Stitch shoulder seams of facing. Press seam allowances open.

Notched collar and front edges: Stitch collar stand pieces to collar pieces (seam number 2). Trim seam allowances and press open. Topstitch close to each side of seams. On fronts, cut lapel darts along centre, approx. 3 cm (1 1/4 ins) long. Stitch undercollar to neck edge of fronts, from each marking to dart. Press seam allowances open. Then stitch undercollar to neck edge, from centre back to each side, continuing seams to stitch lapel darts. Press allowances of collar attachment seam open and press darts flat. Stitch top collar to facings. Clip seam allowances of facings into corners. Press seam allowances open. Pin facings right sides together with jacket. Pin lapel fold lines together. Lay top collar on undercollar. Pin collar attachment seams together. Roll collar and lapels and pin outer edges together. Stitch along front edges and lapel edges, up to marking, not catching allowances of collar. Then stitch along collar edges, not catching allowances at lapel edges. Trim seam allowances. Turn facings to inside and turn collar right side out. Press edges. Pin collar attachment seams together again. Turn back facing up again and sew seam allowances together, close to collar attachment seam. Turn facing down.

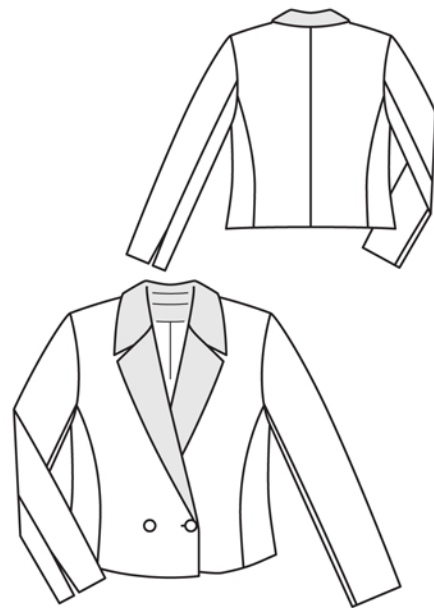
Unfold facing at hem. Press hem allowance to inside, then turn down again.

Stitch front sleeve seams (seam number 8).

At hem corners of sleeves, sew mitred corners: Turn hem allowances and self-facings on vent edges to outside and stitch at an angle. Trim allowances of mitring seams to 5 mm (3/16 in) and press open. Turn facings and hem allowances to inside and press. Sew hem allowances in place.

Stitch back sleeve seams above slit mark.

Set in sleeves, easing sleeve caps. Lay strips of batting, approx. 4 cm (1 5/8 ins) wide, under sleeve caps and sew to seam allowances. Sew shoulder pads in place.



Sew lining: On lining backs, stitch allowances of centre seam together, 1 cm (3/8 in) from edge. For the ease pleat, stitch along centre back from upper edge down and from lower edge up, each approx. 5 cm (2 ins) long, and baste in between. Press pleat to one side. Stitch seams of lining. Set in sleeve linings.

Sew lining in jacket, jacket hem: Stitch lining to inside facing edge, right sides together. Lay lining inside jacket, with wrong sides facing, pulling linings into sleeves. Turn hem allowance to inside and sew in place by hand. Turn lining edge under along hem edge and press fold edge lightly. Push upward in a shallow curve and pin to hem allowance. Sew facing and lining in place. Lay extra length of lining down and press lightly.

Sew sleeve linings in place: At top of vent, pin lining seam to sleeve seam, pushing lining up slightly. At vents, trim lining to 2 cm (3/4 in) before inside facing edge and trim away 1 cm (3/8 in) below top of vent. Clip diagonally into lining at top corners, approx. 1 cm (3/8 in) long. Press vent edges of lining to inside, 1 cm (3/8 in) wide. Above sleeve hems, pin a fold, approx. 1 cm (3/8 in) deep, in lining. Turn in sleeve linings and sew to hem allowance. Lay extra length of lining down and press. Sew lining to facings at sleeve vents.

Work one buttonhole each in right and left front – left buttonhole for inside button. Sew buttons in place, to match buttonholes and as marked. Sew flat inside button to inside right front facing.

Additional Information:

Burda patterns do not include seam and hem allowances. We recommend adding 1-2 cm (3/8 - 3/4 inch) for seams and 2-5 cm (3/4 - 2 inch/es) for hems. Refer to your specific pattern instructions for exact measurements.

The fabric requirements are based on the fabric used for the original designs. These amounts will change if you use fabric of a different width. The pattern of the fabric determines whether all the pieces must be cut in the same direction or whether some can be reversed to save fabric.

The cutting layout printed with the instructions shows the best way to place the pattern pieces on our original fabric. Fold the fabric double with the right side facing in. The fabric then has a fold edge and a selvedge edge. When cutting from a single fabric layer, the right side should face up.

Pattern pieces which are shown in the cutting layout with broken outlines should be pinned to the fabric with their printed side facing down.

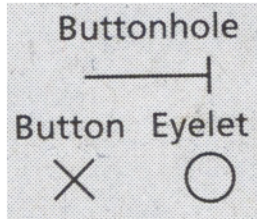
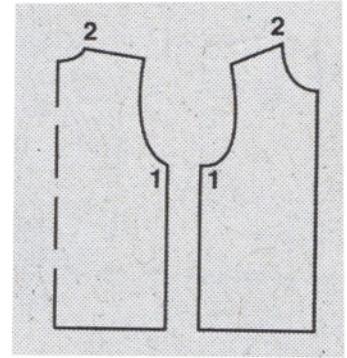
Grey shaded areas in the cutting layout indicate which pieces are to be interfaced.

Transfer the pattern piece lines to the wrong side of your fabric with burda dressmaker's carbon paper. Hand-baste along lines (e.g. for pockets or centre front) to make them visible on the right side of the fabric.

Key Symbols:

Seam numbers

show where pattern pieces must be sewn together. Match pieces with the same numbers.

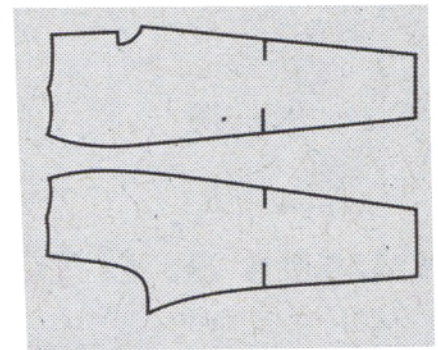


Seam marks

on long seams. Match the small symbols to one another.



Presser foot is the symbol for seam and top-stitching lines.



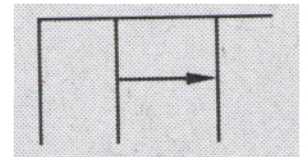
Scissors

indicate edges to be cut without seam allowances and also slash lines, e. g. pocket openings.



Pleat symbol

Fold pleat in direction of arrow.



Placket/slit mark

Indicates beginning/ end of placket/slit.



Gather
Ease
Stretch

