

142 Blouse

Burda sizes 44, 46, 48, 50, 52

Back length approx. 88 cm (35 ins)

Materials

Chiffon,
width: 150 cm (59 ins)
length: 2.40 – 2.40 – 2.45 – 2.50 – 2.50 m
(2 5/8 – 2 5/8 – 2 3/4 – 2 3/4 – 2 3/4 yds).

Soft petersham ribbon, 6 mm (1/4 in) wide and 5.00 m (5 1/2 yds) long.

Interfacing.

12 small, flat buttons and 2 small, sew-on snap fasteners.

Recommended fabrics: Fine, lightweight blouse fabrics.

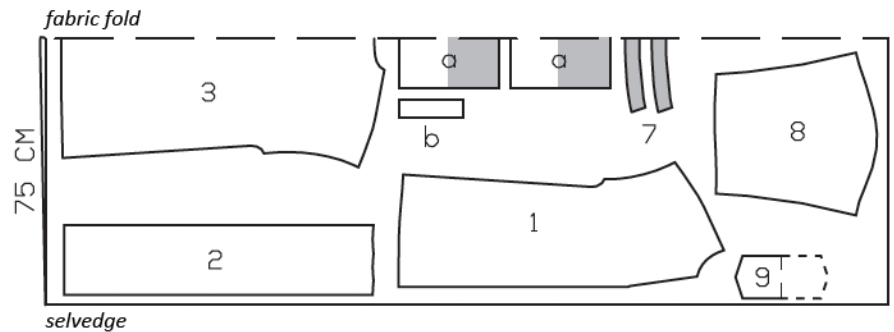
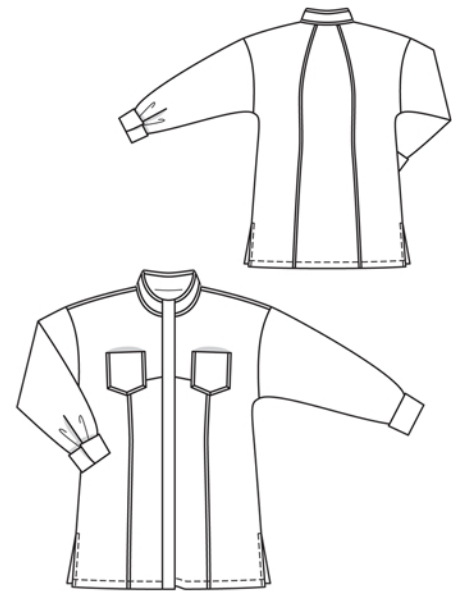
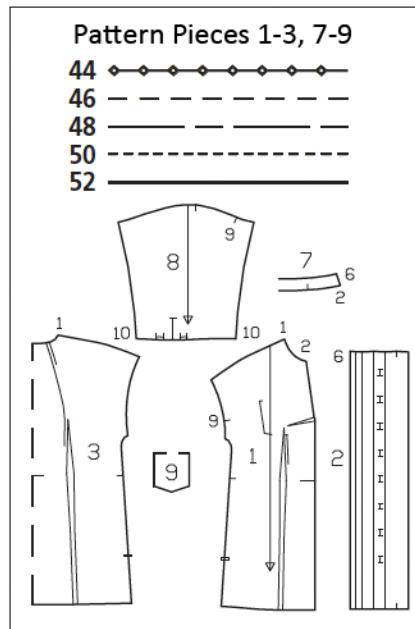
Preparations

Print the pattern out on letter or A4 sized paper. It is **very important** to not scale the document. Your pattern will print on multiple pages, which you will then tile together. Arrange the sheets on a large, hard and flat surface matching up the numbers and letters (i.e. 6A to 6A). Cut or fold one of the sides and match the edge to its corresponding side. Then, tape down in place so paper is secure.

Trace the pattern pieces from the pattern sheet following the lines and markings for style 142 and your size. Note different lines for right and left fastening edges of front band but cut the right and left pieces the same size initially from the double layer of fabric.

burda style magazine patterns do not have seam allowance included.

Seam and hem allowance to be added:
Seams and edges 1.5 cm (5/8 in), band attachment edges (front and front band) 4 cm (15/8 ins), no allowance on long facing edge of front band, hem 4 cm (1 5/8 ins).



Cut from a double layer of fabric, right side facing in.

Cutting Out

- 1 front 2x
- 2 front band 2x
- 3 back, on a fold 1x
- 7 standing collar, on a fold 2x
- 8 sleeve 2x
- 9 pocket, on a fold 2x

Draft the following pieces NOT included in the pattern:

- a) 2 cuffs, 27.5 – 28 – 29 – 30.5 – 31.5 cm (11 – 11 1/8 – 11 1/2 – 12 – 12 1/2 ins) long, 28 cm (11 ins) wide, finished width 14 cm (5 1/2 ins), 7 cm (3 ins) wide when turned up,
- b) 2 binding strips for sleeve vents, 18 cm (7 1/8 ins) long, 5 cm (2 ins) wide (incl. allowances).

Interfacing: See shaded area on pattern layout.

Sewing

Stitch vertical darts and bust darts in fronts. Trim dart allowances to 7 mm (1/4 in) and neaten. Press bust darts up. Press vertical darts forward. Stitch darts in back. Trim dart allowances to 7 mm (1/4 in), neaten and press toward centre.

Pin petersham ribbon to fronts, along vertical darts as marked. Trim away top end of ribbon, 5 mm (3/16 in) above marking. The pocket will conceal end of ribbon on finished garment. Edgestitch ribbon in place. Stitch petersham ribbon to back as marked.

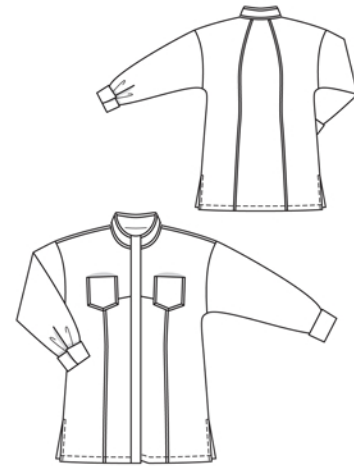
Stitch shoulder seams. Trim seam allowances, neaten together, and press forward. Stitch petersham ribbon to fronts along shoulder seams.

Slash sleeve vents as marked. Fold each binding strip in half and press, right fabric side facing out. Spread slash edges open to a straight line and stitch to long edges of folded binding strip, tapering stitching at end of vent. Press binding strip over attachment seam into vent, then fold to a width of 6 mm (1/4 in) and baste fold edge to inside, over attachment seam. Work from right side to stitch along line of seam. At inside top of vest, stitch diagonally across binding. At each front vest edge, turn binding to inside and baste to lower edge.

Stitch sleeves to armhole edges. Neaten seam allowances together and press toward sleeves.

Stitch side seams, above slit mark, and sleeve seams as continuous seams. Approx. 1 cm (3/8 in) above slit mark, clip seam allowances of side seams horizontally, to 7 mm (1/4 in) before seam. Above clips, trim allowances of side seams and sleeve seams to 7 mm (1/4 in) wide, neaten together and press onto back.

Turn hem allowance to inside, turn edge under by half width, press, and stitch. At slit edges, turn allowances under. Stitch 7 mm (1/4 in) from slit edges and stitch across top of slits.



Lay collar pieces together, right sides facing. Stitch along upper edge. Trim seam allowances. Turn collar right side out and press. Stitch outer collar piece to neck edge. Trim seam allowances and press onto collar. Turn in inside collar piece and baste to attachment seam. Stitch petersham ribbon to collar, along attachment seam and upper edge.

Stitch right front band to right front, stitching 4 cm (1 5/8 ins) from edge. Press seam allowances onto band. For the buttonhole band, fold the band on front fold line (right fold), with right side facing in. Stitch lower edges together, from fold edge to marking. Clip seam allowances at seam end and trim allowances along seam. Turn buttonhole band right side out. Work buttonholes as marked. Turn facing to outside of band on facing fold line and pin. Stitch across bottom end of band. Turn band right side out – buttonhole band lies on wrong side of front. Work from right side to stitch along line of band attachment seam. Press buttonhole band forward and sew to bottom edge by hand. Also topstitch band close to attachment seam. Stitch top band ends as for bottom ends.

Lay pleats in sleeves, in direction of arrows, and baste. Stitch cuffs to lower sleeve edges. Press seam allowances of attachment seams and on other long cuff edges onto cuffs. Fold cuffs lengthwise, right side facing in, and stitch across ends. Turn cuffs right side out. Baste inside edges in place. Topstitch cuffs close to all edges. Work 2 buttonholes in front end of each cuff – spaced 1 cm and 4 cm (3/4 in and 15/8 ins) below attachment seam. Topstitch cuffs close to attachment seams. Work 2 buttonholes in front cuff end of each cuff – 2 cm and 5 cm (3/4 in and 2 ins) below attachment seam. Fold lower cuff edges up, 7 cm (2 3/4 in) wide, and press.

Fold pockets on fabric fold line right side facing in. Stitch side and lower edges together, leaving a section of seam open, for turning. Trim seam allowances. Turn pockets right side out and press. Baste pockets to fronts at placement lines. Pin petersham ribbon along side and lower pocket edges, making small folds at corners and turning ends of ribbon under at upper pocket edges. Edgestitch ribbon in place.

Fasten top end of right band to left band end with 2 snap fasteners.

Additional Information:

Burda patterns do not include seam and hem allowances. We recommend adding 1-2 cm (3/8 - 3/4 inch) for seams and 2-5 cm (3/4 - 2 inch/es) for hems. Refer to your specific pattern instructions for exact measurements.

The fabric requirements are based on the fabric used for the original designs. These amounts will change if you use fabric of a different width. The pattern of the fabric determines whether all the pieces must be cut in the same direction or whether some can be reversed to save fabric.

The cutting layout printed with the instructions shows the best way to place the pattern pieces on our original fabric. Fold the fabric double with the right side facing in. The fabric then has a fold edge and a selvedge edge. When cutting from a single fabric layer, the right side should face up.

Pattern pieces which are shown in the cutting layout with broken outlines should be pinned to the fabric with their printed side facing down.

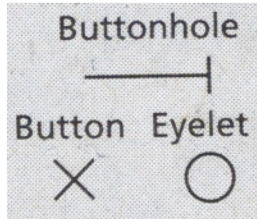
Grey shaded areas in the cutting layout indicate which pieces are to be interfaced.

Transfer the pattern piece lines to the wrong side of your fabric with burda dressmaker's carbon paper. Hand-baste along lines (e.g. for pockets or centre front) to make them visible on the right side of the fabric.

Key Symbols:

Seam numbers

show where pattern pieces must be sewn together. Match pieces with the same numbers.



Seam marks

on long seams. Match the small symbols to one another.



Presser foot is the symbol for seam and top-stitching lines.



Scissors

indicate edges to be cut without seam allowances and also slash lines, e.g. pocket openings.



Pleat symbol

Fold pleat in direction of arrow.



Placket/slit mark

Indicates beginning/ end of placket/slit.



Gather
Ease
Stretch

