

139 Blazer

Burda sizes 44, 46, 48, 50, 52

Back length approx. 80 cm (31 1/2 ins)

Materials

Viscose/rayon-linen blend,
width: 140 cm (55 ins)

length: white, 2.20 – 2.25 – 2.25 – 2.30 – 2.30 m
(2 1/2 – 2 5/8 – 2 5/8 – 2 5/8 – 2 5/8 yds)
black, 1.00 m (1 1/8 yds)

Lining,

width: 140 cm (55 ins)
length: 1.60 m (1 3/4 yds).

Interfacing.

6 large buttons and 6 smaller buttons.

1 flat inside button.

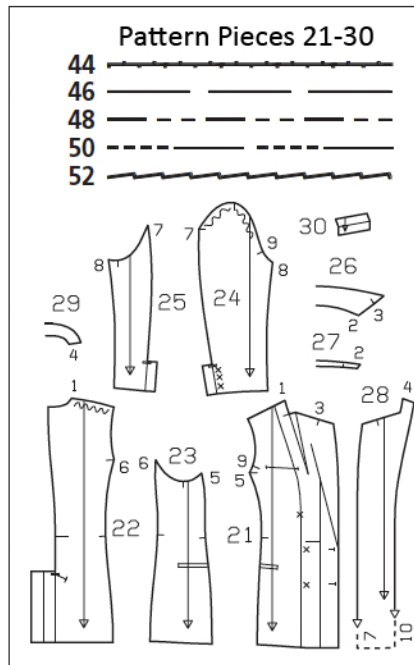
Shoulder pads and a small piece of batting.

Recommended fabrics: Lightweight jacket fabrics
with some body.

Preparations

Print the pattern out on letter or A4 sized paper. It is **very** important to not scale the document. Your pattern will print on multiple pages, which you will then tile together. Arrange the sheets on a large, hard and flat surface matching up the numbers and letters (i.e. 6A to 6A). Cut or fold one of the sides and match the edge to its corresponding side. Then, tape down in place so paper is secure.

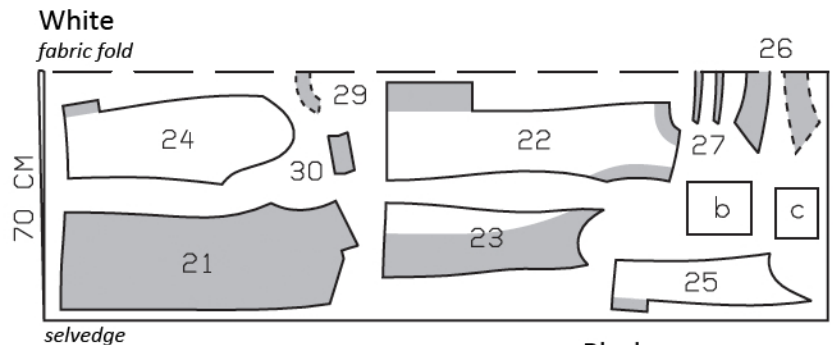
Trace the pattern pieces from the pattern sheet following the lines and markings for style 139 and your size. Note different lines on back for right and left edges of vent but cut right and left pieces the same size initially from the double layer of fabric. The pocket lines on piece 21 are marked on the pattern for size 44. For sizes 46 – 52, lay pattern pieces 21 and 23 together (note markings). Lengthen pocket lines on side piece toward the front and mark front pocket end the same distance from section seam as for size 44. The button markings on piece 24 are for size 44. Remark the buttons for the other sizes according to the size lines.



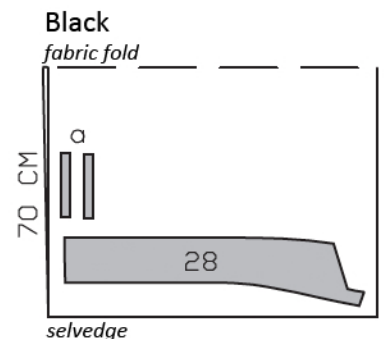
burda style magazine patterns do not have seam allowance included.

Seam and hem allowance to be added:

Seams and edges 1.5 cm (5/8 in), hem and sleeve hems 4 cm (1 5/8 ins),
lining 1.5 cm (5/8 in).



Cut from a double layer of fabric, right side facing in.



Sewing Continued...

hem allowances by hand. Stitch back sleeve seams above slit marks. Clip seam allowance of under sleeves into corners. Press seams open. On inside, at top of vent, stitch across facing and underlap. Sew smaller buttons to sleeves, catching underlaps.

Set in sleeves, easing sleeve caps. Lay strips of batting, approx. 4 cm (1 5/8 in) wide, under sleeve caps and sew to seam allowances. Sew shoulder pads in place.

Sew lining: On lining backs, stitch allowances of centre seam together, 1 cm (3/8 in) from edge, above vent. For the ease pleat, stitch along centre back, at top and bottom (above vent), each approx. 5 cm (2 ins) long, and baste in between. Press pleat and vent allowances onto right back. Stitch seams of lining. Set in sleeve linings.

Sew lining in jacket, hem jacket: Stitch lining to inside facing edge, right sides together. Lay lining inside jacket, with wrong sides facing, pulling linings into sleeves. Turn lining edge under and pin to vent facing of right back at back vent. Trim other lining edge to 1 cm (3/8 in) before pressed-under edge of underlap. Clip diagonally 1 cm (3/8 in) into top corner. Turn lining edge under and pin to vent facing of left back. At top of vent, pin lining to underlap. Sew lining in place by hand. (Alternative: Reach up between main fabric and lining to pull out pinned edges and stitch them together. Push edges in place again. At top of vent, sew lining to underlap by hand.) Turn hem allowance to inside and sew in place by hand. Turn lining under along lower jacket edge and press fold edge lightly. Push upward in a shallow curve and pin to hem allowance. Sew facings and lining in place. Lay extra length of lining down and press lightly. Above each sleeve hem, pin a fold, approx. 1 cm (3/8 in) deep, in lining. Turn edge of sleeve lining under and sew to hem allowance. Lay extra length down and press.

Work buttonholes in right front. Work top buttonhole for inside button in left front. Sew buttons in place to match buttonholes and as marked. Sew flat inside button to right front facing.



Cutting Out

White fabric:

- 21 front 2x
- 22 back 2x
- 23 side piece 2x
- 24 upper sleeve 2x
- 25 under sleeve 2x
- 26 collar, on a fold 2x
- 27 collar stand, on a fold 2x
- 29 back facing, on a fold 1x
- 30 upper left welt 1x

Draft the following pieces NOT included in the pattern:

- b) 2 pocket pieces (lower pockets), 18 cm (7 1/8 ins) wide, 21 cm (8 3/8 ins) long (incl. allowances),
- c) pocket piece (upper pocket), 14 cm (5 1/2 ins) wide, 12 cm (4 3/4 ins) long (incl. allowances).

Black fabric:

- 28 front facing 2x

- a) 4 welt strips (lower pockets), 18 cm (7 1/8 ins) long, 3 cm (1 1/4 ins) wide (incl. allowances).

Lining: piece 21 to lining line; piece 22 minus neck facing, without vent facing and with an ease pleat of approx. 2 cm (3/4 in) at centre back; pieces 24 and 25 without vent facings; piece 23; and also pieces b and c.

Interfacing: See shaded area on pattern layout. Also interface hem allowances.

Sewing

Stitch side pieces to front. Press seam allowances open.

Sew slashed pockets on fronts: Hand baste along placement lines for welts, each 6 mm (1/4 in) from welt attachment line (finished welt width), to make these lines visible on right fabric side. Fold welt strips lengthwise with right side facing out and press. Lay folded welt strips on fronts and pin so that fold edges of welts meet placement lines. Stitch welts in place along attachment lines, stitching 6 mm (1/4 in) from fold edge. Slash between lines of stitching and clip

diagonally toward each last stitch but do not cut into welts. Turn welts into pocket openings and press. Fold small triangles of fabric on pocket opening ends to inside and stitch to welts, from seam end to seam end. Stitch pocket lining pieces to seam allowances of lower welt attachment seams and stitch pocket pieces of main fabric to seam allowances of upper welt attachment seams. Trim pocket pieces even and stitch together.

Sew welt pocket in upper left front: Fold welt lengthwise, right side facing in. Stitch across ends. Turn welt right side out. Stitch to front along marked attachment line, right sides facing – welt points down. Lay pocket piece of main fabric on front opposite welt and stitch in place, 1.5 cm (5/8 in) from welt attachment seam. This seam should be approx. 7 mm (1/4 in) shorter at the ends than the welt attachment seam. Slash between lines of stitching and clip diagonally toward each last stitch but do not cut into pocket pieces. Pull pocket pieces to inside and press welt over pocket opening. Work from inside to stitch pocket lining piece to seam allowances of welt attachment seam. Fold small triangles at pocket opening ends to inside and sew to pocket piece. Trim pocket pieces even and stitch together. Sew narrow welt edges in place by hand.

Stitch centre back seam, leaving vent open. Press seam allowances open. Press left vent facing to inside and trim away, 1.5 cm (5/8 in) from marked “left edge” line. Lay right vent underlap on left back and press under seam allowance of right back above vent, tapering as you go to avoid the need to clip it. Press facing to inside on fold line. Topstitch left back as marked, catching underlap.

Stitch side pieces to back. Stitch shoulder seams on jacket and on facing.

Notched collar and front edges: Stitch collar stand pieces to collar pieces (seam number 2). Trim seam allowances and press open. Topstitch close to each side of seams. On fronts, cut lapel darts along centre, approx. 3 cm (1 1/4 ins) long. Stitch undercollar to neck edge of fronts, from each marking to dart. Press seam allowances open. Then stitch undercollar to neck edge, from centre back to each side, continuing seams to stitch lapel darts. Press allowances of collar attachment seam open and press darts flat. Stitch top collar to facings. Clip seam allowances of facings into corners. Press seam allowances open. Pin facings right sides together with jacket. Pin lapel fold lines together. Lay top collar on undercollar. Pin collar attachment seams together. Roll collar and lapels and pin outer edges together. Stitch along front edges and lapel edges, up to marking, not catching allowances of collar. Then stitch along collar edges, not catching allowances at lapel edges. Trim seam allowances. Turn facings to inside and turn collar right side out. Press edges. Pin collar attachment seams together again. Turn back facing up again and sew seam allowances together, close to collar attachment seam. Turn facing down.

At hem edge, unfold facings. Press hem allowance to inside then unfold again.

Two-piece sleeve with sleeve vent: Stitch front sleeve seams (seam number 8). On upper sleeves, turn vent facing and hem allowance to outside and stitch corner seam diagonally (mitred corner). Trim allowances of mitring seam to 5 mm (3/16 in) and press open. Stitch hem allowances of under sleeves to vertical edges of underlaps. Turn hem allowances and front vent facings to inside. Sew

Additional Information:

Burda patterns do not include seam and hem allowances. We recommend adding 1-2 cm (3/8 - 3/4 inch) for seams and 2-5 cm (3/4 - 2 inch/es) for hems. Refer to your specific pattern instructions for exact measurements.

The fabric requirements are based on the fabric used for the original designs. These amounts will change if you use fabric of a different width. The pattern of the fabric determines whether all the pieces must be cut in the same direction or whether some can be reversed to save fabric.

The cutting layout printed with the instructions shows the best way to place the pattern pieces on our original fabric. Fold the fabric double with the right side facing in. The fabric then has a fold edge and a selvedge edge. When cutting from a single fabric layer, the right side should face up.

Pattern pieces which are shown in the cutting layout with broken outlines should be pinned to the fabric with their printed side facing down.

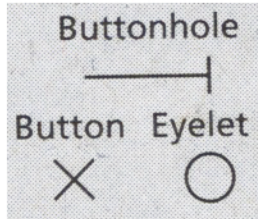
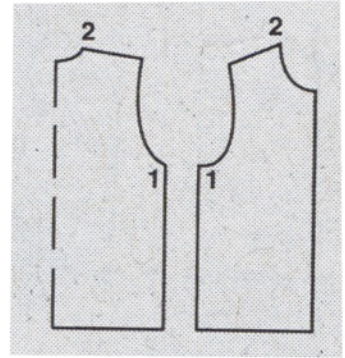
Grey shaded areas in the cutting layout indicate which pieces are to be interfaced.

Transfer the pattern piece lines to the wrong side of your fabric with burda dressmaker's carbon paper. Hand-baste along lines (e.g. for pockets or centre front) to make them visible on the right side of the fabric.

Key Symbols:

Seam numbers

show where pattern pieces must be sewn together. Match pieces with the same numbers.



Seam marks

on long seams. Match the small symbols to one another.



Presser foot is the symbol for seam and top-stitching lines.



Scissors

indicate edges to be cut without seam allowances and also slash lines, e. g. pocket openings.



Pleat symbol

Fold pleat in direction of arrow.



Placket/slit mark

Indicates beginning/ end of placket/slit.



Gather
Ease
Stretch

