

101 Coat

Burda sizes 36, 38, 40, 42, 44

Back length about 98 cm (39 ins)

Materials

Knit loden cloth,
width: 130 cm (51 in)
length: 2.50 – 2.50 – 2.80 – 2.80 – 2.80 m
(2 3/4 – 2 3/4 – 3 1/8 – 3 1/8 – 3 1/8 yds).

Vilene Bias Tape/stay tape.

Recommended fabrics: Softly draping coat fabrics of wool or blends.

Preparations

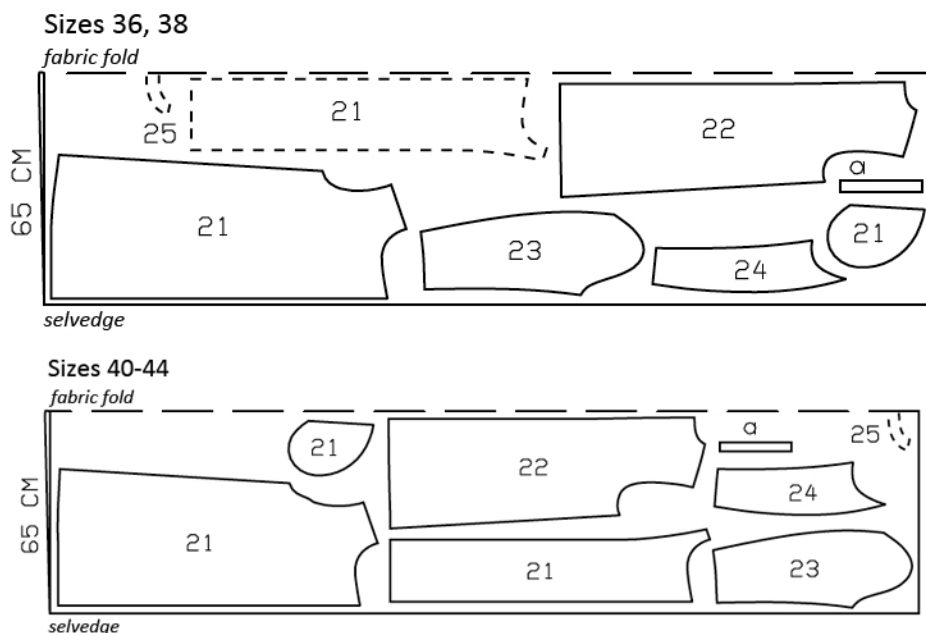
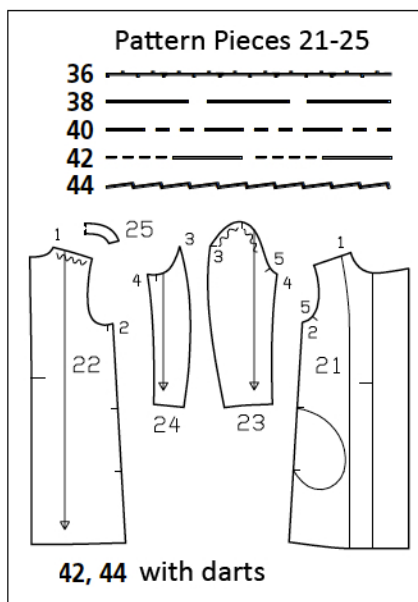
Print the pattern out on letter or A4 sized paper. It is **very** important to not scale the document. Your pattern will print on multiple pages, which you will then tile together. Arrange the sheets on a large, hard and flat surface matching up the numbers and letters (i.e. 6A to 6A). Cut or fold one of the sides and match the edge to it's corresponding side. Then, tape down in place so paper is secure.

Trace the pattern pieces from the pattern sheet following the lines and markings for style 101 and your size. Trace the front facing from piece 21 as a separate pattern piece. Trace the pocket piece from piece 21 as a separate pattern piece – it is the same for all sizes.

burda style magazine patterns do not have seam allowance included.

Seam and hem allowance to be added:

Seams, edges and hem 1.5 cm (5/8 in).



Cutting Out

- 21 front 2x
- front facing 2x
- pocket piece 2x
- 22 back 2x
- 23 upper sleeve 2x
- 24 under sleeve 2x
- 25 back facing, on a fold 1x

Draft the following piece NOT included in the pattern:

a) 2 facing strips for pocket opening edges, 23 cm (9 1/8 ins) long, 5 cm (2 ins) wide (incl. allowance).

Vilene Bias Tape/stay tape: Iron onto neck and armhole edges.

Sewing

Lapped seams: Use a serger/overlock machine to trim away seam allowance on the edge which is to lie on top and neaten edge 6 mm (1/4 in) wide with overlock stitch. Neaten edge of seam allowance which will lie underneath. Lay piece without allowance on piece with allowance, with wrong side facing right side, and stitch along inner edge of overlock stitching.

Stitch centre back seam – left edge of seam lies on top.

Stitch bust darts for sizes 42 and 44. Press darts down.

Side seams and in-seam pockets: Use overlock stitching to neaten inside edges and ends of facing strips for pocket openings, edges of allowances on side seam edges of back, and all edges of pocket pieces. Slip joining edges of pocket pieces under back edges, between markings – right side facing wrong side. Stitch seam allowances of back to pocket pieces, close to edges and along inside edge of overlock stitching. Baste facing strips under front pocket opening edges. Use the overlock machine to trim away seam allowances and neaten edges of side seams and front pocket openings. Lay front edges on side seam allowances of back. Stitch along inside edge of overlock stitching, above and below pocket opening. Baste pocket pieces to wrong side of fronts. To stitch pocket pieces in place, pin paper pattern piece to each front and stitch along edge of pattern piece.

Stitch shoulder seams – front edge lies on top. Stitch facing seams in the “normal” manner. Neaten inside edge of facing. Lay facing under front and back pieces, with wrong sides together. Baste to hem edge, front edges, and neck edge, next to seam allowance. Neaten edges all around with overlock stitch, trimming away seam allowances.

Stitch back sleeve seams – edge of upper sleeve lies on top. Stitch lower sleeve seams as “normal” seams. Neaten lower edges of sleeves with overlock stitch, trimming away allowances.



Set in sleeves, easing sleeve caps and stitching these seams in the “normal” manner.

Additional Information:

Burda patterns do not include seam and hem allowances. We recommend adding 1-2 cm (3/8 - 3/4 inch) for seams and 2-5 cm (3/4 - 2 inch/es) for hems. Refer to your specific pattern instructions for exact measurements.

The fabric requirements are based on the fabric used for the original designs. These amounts will change if you use fabric of a different width. The pattern of the fabric determines whether all the pieces must be cut in the same direction or whether some can be reversed to save fabric.

The cutting layout printed with the instructions shows the best way to place the pattern pieces on our original fabric. Fold the fabric double with the right side facing in. The fabric then has a fold edge and a selvedge edge. When cutting from a single fabric layer, the right side should face up.

Pattern pieces which are shown in the cutting layout with broken outlines should be pinned to the fabric with their printed side facing down.

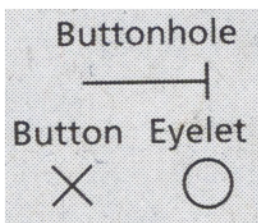
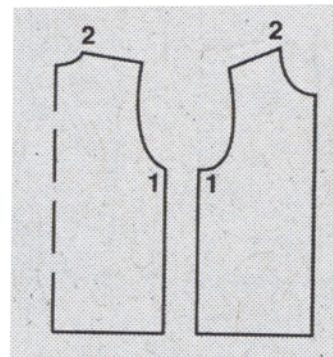
Grey shaded areas in the cutting layout indicate which pieces are to be interfaced.

Transfer the pattern piece lines to the wrong side of your fabric with burda dressmaker's carbon paper. Hand-baste along lines (e.g. for pockets or centre front) to make them visible on the right side of the fabric.

Key Symbols:

Seam numbers

show where pattern pieces must be sewn together. Match pieces with the same numbers.

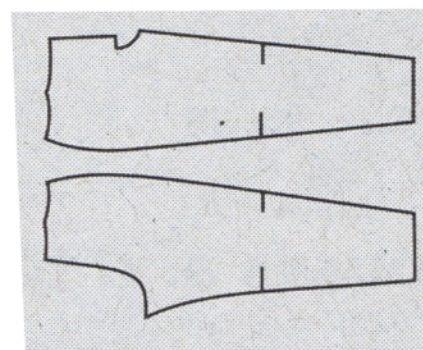


Seam marks

on long seams. Match the small symbols to one another.



Presser foot
is the symbol for seam and top-stitching lines.



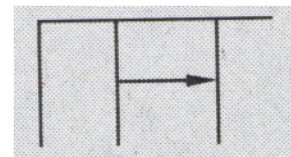
Scissors

indicate edges to be cut without seam allowances and also slash lines, e.g. pocket openings.



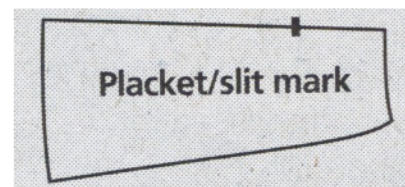
Pleat symbol

Fold pleat in direction of arrow.



Placket/slit mark

Indicates beginning/ end of placket/slit.



Gather
Ease
Stretch

